

Instructions for the Citywide Hillside Area Map

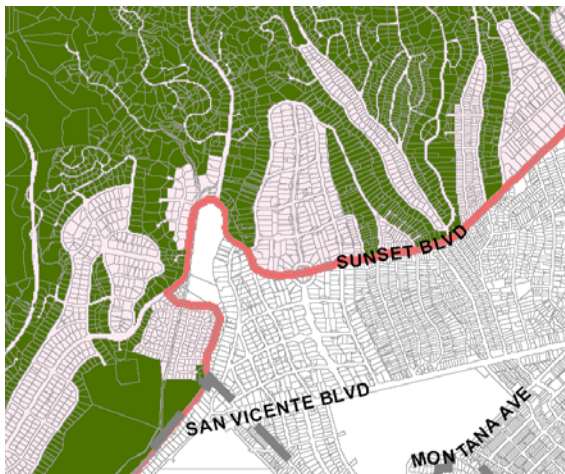
Purpose of Citywide Hillside Area Map



Please download the map available on the Department of City Planning website (<http://planning.lacity.org/>) under the Proposed Ordinances section, named:

Current and Proposed Hillside Area Boundaries (Zoomable Parcel-Specific Version)

This map contains the parcel lines for the entire city in order to allow the general public to determine whether their property will remain within the proposed Hillside Area boundaries, or if it is being removed. As show in the example below, the areas which are in green are the true hillside lots based on topography, and the area which are light-red are lots which are flat and will be removed from the Hillside Area boundaries.

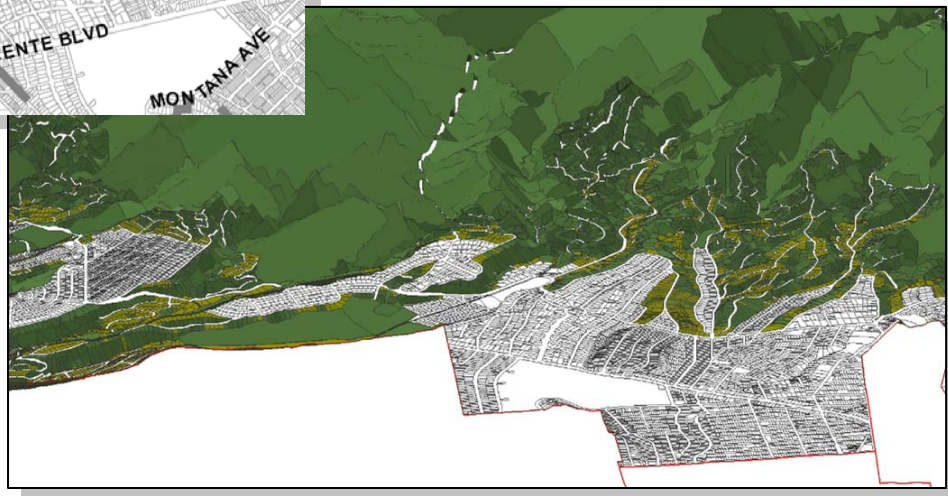
Zoomed In View of Brentwood Area



-  True Hillside Lots
-  Flat Lots in Current Hillside Area

3-D Model of Brentwood Area

Models like this were used to verify hillside lot identification.



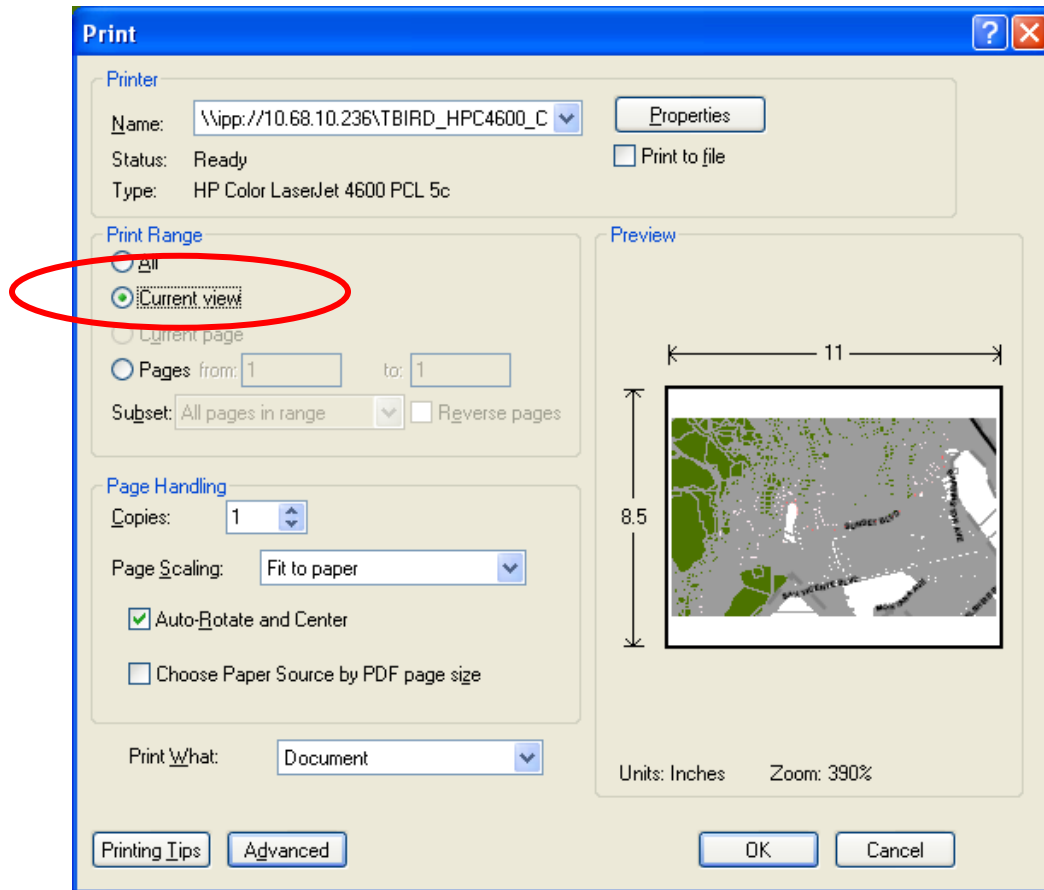
Because the map contains the parcel level information, this maps is not ideal for printing out on a citywide extent and should instead be used to print out at a neighborhood-specific level.

How To Print Zoomed View

The instructions on the following page are for utilizing the Citywide Hillside Area Map in order to print out a view of your individual property or neighborhood.

Instructions for Citywide Hillside Area Map

When you have reach the desired view for your area of interest and you are ready to print, click on File, and then Print. When the window shown below appears, be sure to select Current view in the Print Range section.



Once you have done that, you can click on OK. It is important to note that any other special steps that you normally follow to print, such as paper selection or network printer setting, may depend on your specific printing hardware set-up; please use these instructions accordingly and consult your user manual for more specific instructions.