

## E.2 Report of Methane Gas Assessment

---

August 23, 2011

**Via Electronic Mail**

Ms. Sharon Christenbury, Esq.  
SM 10000 Property, LLC  
2200 Biscayne Boulevard  
Miami, Florida 33137

**Re: Report of Methane Gas Assessment  
10000 Santa Monica Boulevard, Los Angeles, California**

Dear Sharon:

ENVIRON International Corporation (ENVIRON) is pleased to submit this report to SM 10000 Property, LLC (the "Client") regarding the results of the methane assessment conducted recently at the property located at 10000 Santa Monica Boulevard, Los Angeles, California (the "site"). In accordance with Division 71 of the Los Angeles Municipal Building Code, all new buildings and paved areas located in the Methane Zone shall test for methane per the three step protocol described in Bulletin No. P/BC2002-101 (Reference No. 91.7104.1 – the "Bulletin"). The testing results are used to evaluate whether design of a methane mitigation system is necessary and if necessary, the appropriate level of design. This report presents the results of the methane investigation as required by the Bulletin.

**Background**

The approximately 2.2-acre site is located at the intersection of Santa Monica Boulevard and Moreno Drive and consists of vacant land; no structures are currently present at the site other than a small mobile guard shack at the western portion of the site. No dirt or paved roads are present; some demolition debris, small plants, and shrubs cover the majority of the site. The site is located in an area designated by the City of Los Angeles and the State of California Department of Conservation Division of Oil, Gas, & Geothermal Resources (DOGGR) as a Methane Zone.

**Objectives**

The objective of the methane soil gas investigation was to evaluate the potential presence of methane in the subsurface at the site.

**Scope of Work**

The scope of work included (1) pre-field activities and mobilization; (2) methane investigation; and, (3) preparation of this report. All drilling and sampling activities were supervised by ENVIRON field personnel working under the supervision of a California Registered Professional Geologist. Field work was conducted on August 17, 18, and 19, 2011.

**Task 1: Pre Field Activities and Mobilization**

Prior to initiation of drilling activities, ENVIRON contacted Underground Service Alert (USA) to mark the locations of all major utilities near the proposed boring locations. In addition to the services provided by USA, ENVIRON contracted with a private utility locating company to conduct a geophysical survey in the immediate vicinity of each proposed boring location to

identify subsurface structures or underground obstructions. The survey by the private utility locating company was conducted on the same day that Task 2 was implemented.

ENVIRON also prepared a Site-specific Health and Safety Plan (HASP). The HASP is designed to minimize exposure of ENVIRON's field personnel to potentially hazardous materials. All field personnel involved in the project were required to implement the procedures presented in the HASP while conducting the field work.

### **Task 2: Methane Investigation**

On August 17, 2011, ENVIRON retained a direct-push drilling contractor to conduct a shallow soil gas test as defined in the Bulletin. One soil gas sample was collected per approximately 10,000 square feet of site area at a depth of 4 feet below ground surface (bgs). In total, 10 temporary soil gas probes were installed (Borings SG-1 through SG-10; see Figure 1) across the site for collection of soil gas samples. ENVIRON retained H&P Mobile Geochemistry Inc. (H&P), a City of Los Angeles Department of Building and Safety (LADBS)-certified testing agency, to assist with probe installation and sample collection and analysis. Soil gas samples were collected in syringes and analyzed in an on-site mobile laboratory for methane in accordance with EPA Method 8015 Modified. Pressure measurements were recorded at each of the sampling points using calibrated pressure gauges.

The second step of the methane gas investigation included the installation of five gas probe sets (one per approximately 20,000 square feet) near where the highest concentration of methane was found based on the data from the shallow soil gas test. Each gas probe set consisted of three multi-depth probes, installed at approximate sampling depths of 5 feet, 10 feet, and 20 feet bgs. The probes were installed on August 17, 2011, by H&P and according to the specifications described on page 8 of the Bulletin.

On August 18, 2011, a minimum of 24 hours after the five gas probe sets were installed, each probe at each depth was sampled; methane gas concentrations and pressure measurements at each probe were measured using the same equipment used for the shallow soil gas test. Barometric pressure was recorded at the start of each sample collection. Samples were collected in syringes and analyzed in an on-site mobile laboratory for methane in accordance with EPA Method 8015 Modified.

On August 19, 2011, a second round of methane sampling of the soil gas probe sets occurred; procedures were followed as described for the August 18 sampling event.

After the collection of the soil gas samples, the borings were backfilled with bentonite slurry and completed to match the existing surface grade.

## **Findings**

### **Shallow Soil Gas Test**

- Methane was detected above the laboratory reporting limit (RL) of 10 parts per million by volume (ppmv) in samples at four locations, with a maximum concentration of 39 ppmv at Boring SG-10.
- Barometric pressure decreased slightly during the sample period, from 1014.5 millibars (mb) to 1014.2 mb.
- Based on the shallow soil gas test results, soil gas probe sets were installed near probes where methane was reported (SG-4, SG-5, SG-8, and SG-10). In addition, a fifth soil gas probe set was installed near SG-6 due to its central location at the site.

**Gas Probe Set Test**

Five feet bgs probes:

- On August 18, 2011, methane was detected above the RL in samples at three locations with a maximum concentration of 57 ppmv at Boring SG-10.
- On August 19, 2011, methane was detected above the RL in samples at one location with a concentration of 24 ppmv at Boring SG-10.

Ten feet bgs probes:

- On August 18, 2011, methane was detected above the RL in samples at three locations with a maximum concentration of 120 ppmv at Boring SG-5.
- On August 19, 2011, methane was detected above the RL in samples at three locations with a maximum concentration of 57 ppmv at Boring SG-5.

Twenty feet bgs probes:

- On August 18, 2011, methane was detected above the RL in samples at two locations with a maximum concentration of 94 ppmv at Boring SG-6.
- On August 19, 2011, methane was detected above the RL in samples at two locations with a maximum concentration of 74 ppmv at Boring SG-6.

On August 18, 2011, barometric pressure decreased slightly during the sample period, from 1012.4 mb to 1011.8 mb. On August 19, 2011, barometric pressure again decreased slightly during the sample period, from 1012.0 mb to 1011.3 mb. At no time during sample collection was increasing barometric pressure from a pre-frontal weather condition observed.

A summary of the analytical results for methane in the soil gas samples is presented in Table 1, and complete analytical laboratory reports are included as Attachment A.

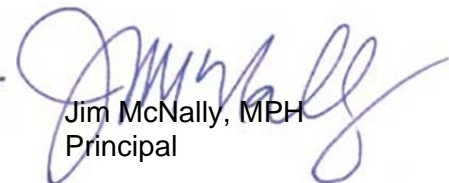
**Closure**

ENVIRON appreciates the opportunity to continue to assist SM 10000 Property, LLC on this project. If you have any questions regarding this report, please contact Jim McNally at 213.943.6336 or Rebekah Wale at 949.798.3693.

Very truly yours,

  
Kaleena Johnson  
Associate

  
Rebekah J. Wale  
Senior Manager

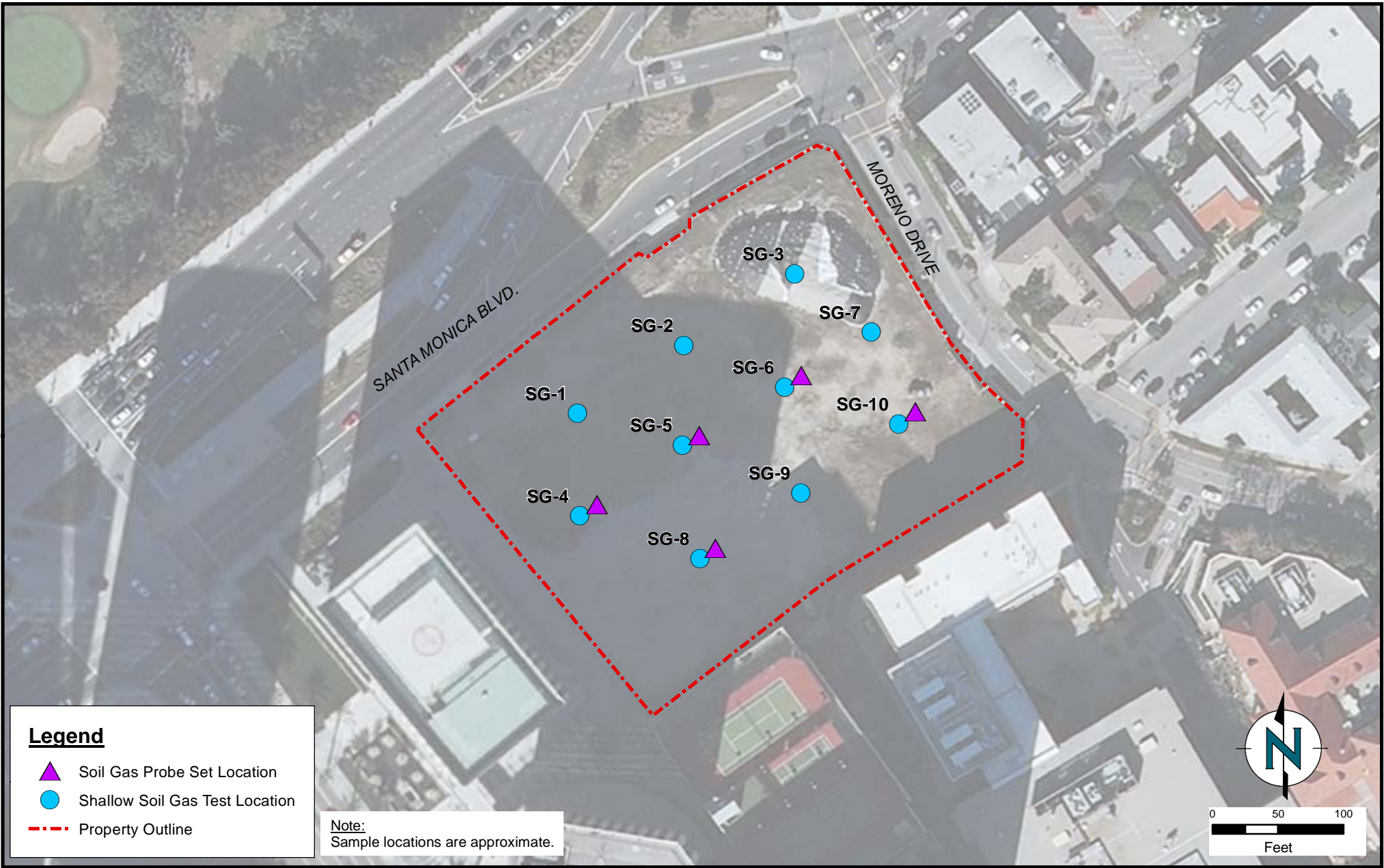
  
Jim McNally, MPH  
Principal

KJ:gw




Q:\C\Crescent Heights\0524416B1 CH SM 10000Prop Methane Gas Invest\Final\10000 SM Methane Survey Results.docx

Enclosures

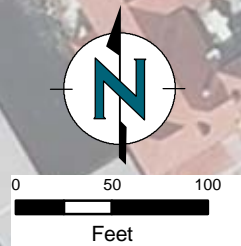
**Figure**



**Legend**

-  Soil Gas Probe Set Location
-  Shallow Soil Gas Test Location
-  Property Outline

Note:  
Sample locations are approximate.



**ENVIRON**

**Methane Investigation Sample Locations**

10000 Santa Monica Blvd.  
Los Angeles, California

Figure  
**1**

## Table

**Table 1: Methane Soil Gas Results**

10000 Santa Monica Blvd.

Los Angeles, California

| Location | Depth | Date Sampled   | Analyte (ppmv) |
|----------|-------|----------------|----------------|
|          |       |                | Methane        |
| SG-1     | 4     | 8/17/11        | < 10           |
| SG-2     | 4     | 8/17/11        | < 10           |
| SG-3     | 4     | 8/17/11        | < 10           |
| SG-4     | 4     | 8/17/11        | 27             |
|          | 5     | 8/18/11        | < 10           |
|          | 5     | 8/19/11        | < 10           |
|          | 10    | 8/18/11        | < 10           |
|          | 10    | 8/19/11        | < 10           |
|          | 20    | 8/18/11        | 60             |
|          | 20    | 8/19/11        | 49             |
| SG-5     | 4     | 8/17/11        | 10             |
|          | 4     | <i>8/17/11</i> | 12             |
|          | 5     | 8/18/11        | 34             |
|          | 5     | 8/19/11        | < 10           |
|          | 10    | 8/18/11        | 120            |
|          | 10    | 8/19/11        | 57             |
|          | 20    | 8/18/11        | < 10           |
|          | 20    | 8/19/11        | < 10           |
| SG-6     | 4     | 8/17/11        | < 10           |
|          | 5     | 8/18/11        | < 10           |
|          | 5     | 8/19/11        | < 10           |
|          | 5     | <i>8/19/11</i> | < 10           |
|          | 10    | 8/18/11        | < 10           |
|          | 10    | 8/19/11        | < 10           |
|          | 20    | 8/18/11        | 94             |
|          | 20    | 8/19/11        | 74             |
| SG-7     | 4     | 8/17/11        | < 10           |
| SG-8     | 4     | 8/17/11        | 20             |
|          | 5     | 8/18/11        | 23             |
|          | 5     | 8/19/11        | < 10           |
|          | 10    | 8/18/11        | 110            |
|          | 10    | 8/19/11        | 26             |
|          | 20    | 8/18/11        | < 10           |
|          | 20    | 8/19/11        | < 10           |
| SG-9     | 4     | 8/17/11        | < 10           |
| SG-10    | 4     | 8/17/11        | 39             |
|          | 5     | 8/18/11        | 57             |
|          | 5     | 8/19/11        | 24             |
|          | 10    | 8/18/11        | 12             |
|          | 10    | <i>8/18/11</i> | < 10           |
|          | 10    | 8/19/11        | 17             |
|          | 20    | 8/18/11        | < 10           |
|          | 20    | 8/19/11        | < 10           |

Notes:

ppmv = parts per million by volume

*Italics* = duplicate sample taken

Samples analyzed by EPA Method 8015M



**Attachment A**  
**Laboratory Analytical Reports**

17 August 2011

Ms. Rebekah Wale  
Environ Corp.  
18100 Von Karman Ave, Suite 600  
Irvine, CA 92612



H&P Project: ENV081711-W1  
Client Project: WO-2011-71

Dear Ms. Rebekah Wale:

Enclosed is the analytical report for the above referenced project. The data herein applies to samples as received by H&P Mobile Geochemistry, Inc. on 17-Aug-11 which were analyzed in accordance with the attached Chain of Custody record(s).

The results for all sample analyses and required QA/QC analyses are presented in the following sections and summarized in the documents:

- Sample Summary
- Case Narrative (if applicable)
- Sample Results
- Quality Control Summary
- Notes and Definitions / Appendix
- Chain of Custody

Unless otherwise noted, all analyses were performed and reviewed in compliance with our Quality Systems Manual and Standard Operating Procedures. This report shall not be reproduced, except in full, without the written approval of H&P Mobile Geochemistry, Inc.

We at H&P Mobile Geochemistry, Inc. sincerely appreciate the opportunity to provide analytical services to you on this project. If you have any questions or concerns regarding this analytical report, please contact me at your convenience at 760-804-9678.

Sincerely,

Janis Villarreal  
Laboratory Director

H&P Mobile Geochemistry, Inc. operates under CA Environmental Lab Accreditation Program Numbers 2579, 2740, 2741, 2742, 2743, 2745 and 2754. National Environmental Laboratory Accreditation Conference (NELAC) Standards Lab #11845



2470 Impala Drive  
Carlsbad, CA 92010  
760-804-9678 Phone  
760-804-9159 Fax

Environ Corp.  
18100 Von Karman Ave, Suite 600  
Irvine, CA 92612

Project: ENV081711-W1  
Project Number: WO-2011-71  
Project Manager: Ms. Rebekah Wale

Reported:  
17-Aug-11 12:29

**ANALYTICAL REPORT FOR SAMPLES**

| Sample ID         | Laboratory ID | Matrix | Date Sampled | Date Received |
|-------------------|---------------|--------|--------------|---------------|
| DRAFT: SG-9-4     | E108095-01    | Vapor  | 17-Aug-11    | 17-Aug-11     |
| DRAFT: SG-8-4     | E108095-02    | Vapor  | 17-Aug-11    | 17-Aug-11     |
| DRAFT: SG-10-4    | E108095-03    | Vapor  | 17-Aug-11    | 17-Aug-11     |
| DRAFT: SG-7-4     | E108095-04    | Vapor  | 17-Aug-11    | 17-Aug-11     |
| DRAFT: SG-6-4     | E108095-05    | Vapor  | 17-Aug-11    | 17-Aug-11     |
| DRAFT: SG-4-4     | E108095-06    | Vapor  | 17-Aug-11    | 17-Aug-11     |
| DRAFT: SG-1-4     | E108095-07    | Vapor  | 17-Aug-11    | 17-Aug-11     |
| DRAFT: SG-2-4     | E108095-08    | Vapor  | 17-Aug-11    | 17-Aug-11     |
| DRAFT: SG-3-4     | E108095-09    | Vapor  | 17-Aug-11    | 17-Aug-11     |
| DRAFT: SG-5-4     | E108095-10    | Vapor  | 17-Aug-11    | 17-Aug-11     |
| DRAFT: SG-5-4 Dup | E108095-11    | Vapor  | 17-Aug-11    | 17-Aug-11     |



2470 Impala Drive  
 Carlsbad, CA 92010  
 760-804-9678 Phone  
 760-804-9159 Fax

|  |  |                              |
|--|--|------------------------------|
| Environ Corp.<br>18100 Von Karman Ave, Suite 600<br>Irvine, CA 92612 | Project: ENV081711-W1<br>Project Number: WO-2011-71<br>Project Manager: Ms. Rebekah Wale | Reported:<br>17-Aug-11 12:29 |
|--|--|------------------------------|

**DRAFT: Soil Gas and Vapor Analysis**

**H&P Mobile Geochemistry, Inc.**

| Analyte   | Result | Reporting Limit | Units | Dilution Factor | Batch   | Prepared  | Analyzed  | Method    | Notes |
|---|--------|-----------------|-------|-----------------|---------|-----------|-----------|-----------|-------|
| <b>DRAFT: SG-9-4 (E108095-01) Vapor</b> <b>Sampled: 17-Aug-11</b> <b>Received: 17-Aug-11</b>  |        |                 |       |                 |         |           |           |           |       |
| Methane   | ND     | 10              | ppmv  | 1               | EH11705 | 17-Aug-11 | 17-Aug-11 | EPA 8015M |       |
| <b>DRAFT: SG-8-4 (E108095-02) Vapor</b> <b>Sampled: 17-Aug-11</b> <b>Received: 17-Aug-11</b>  |        |                 |       |                 |         |           |           |           |       |
| Methane   | 20     | 10              | ppmv  | 1               | EH11705 | 17-Aug-11 | 17-Aug-11 | EPA 8015M |       |
| <b>DRAFT: SG-10-4 (E108095-03) Vapor</b> <b>Sampled: 17-Aug-11</b> <b>Received: 17-Aug-11</b> |        |                 |       |                 |         |           |           |           |       |
| Methane   | 39     | 10              | ppmv  | 1               | EH11705 | 17-Aug-11 | 17-Aug-11 | EPA 8015M |       |
| <b>DRAFT: SG-7-4 (E108095-04) Vapor</b> <b>Sampled: 17-Aug-11</b> <b>Received: 17-Aug-11</b>  |        |                 |       |                 |         |           |           |           |       |
| Methane   | ND     | 10              | ppmv  | 1               | EH11705 | 17-Aug-11 | 17-Aug-11 | EPA 8015M |       |
| <b>DRAFT: SG-6-4 (E108095-05) Vapor</b> <b>Sampled: 17-Aug-11</b> <b>Received: 17-Aug-11</b>  |        |                 |       |                 |         |           |           |           |       |
| Methane   | ND     | 10              | ppmv  | 1               | EH11705 | 17-Aug-11 | 17-Aug-11 | EPA 8015M |       |
| <b>DRAFT: SG-4-4 (E108095-06) Vapor</b> <b>Sampled: 17-Aug-11</b> <b>Received: 17-Aug-11</b>  |        |                 |       |                 |         |           |           |           |       |
| Methane   | 27     | 10              | ppmv  | 1               | EH11705 | 17-Aug-11 | 17-Aug-11 | EPA 8015M |       |
| <b>DRAFT: SG-1-4 (E108095-07) Vapor</b> <b>Sampled: 17-Aug-11</b> <b>Received: 17-Aug-11</b>  |        |                 |       |                 |         |           |           |           |       |
| Methane   | ND     | 10              | ppmv  | 1               | EH11705 | 17-Aug-11 | 17-Aug-11 | EPA 8015M |       |
| <b>DRAFT: SG-2-4 (E108095-08) Vapor</b> <b>Sampled: 17-Aug-11</b> <b>Received: 17-Aug-11</b>  |        |                 |       |                 |         |           |           |           |       |
| Methane   | ND     | 10              | ppmv  | 1               | EH11705 | 17-Aug-11 | 17-Aug-11 | EPA 8015M |       |
| <b>DRAFT: SG-3-4 (E108095-09) Vapor</b> <b>Sampled: 17-Aug-11</b> <b>Received: 17-Aug-11</b>  |        |                 |       |                 |         |           |           |           |       |
| Methane   | ND     | 10              | ppmv  | 1               | EH11705 | 17-Aug-11 | 17-Aug-11 | EPA 8015M |       |



2470 Impala Drive  
Carlsbad, CA 92010  
760-804-9678 Phone  
760-804-9159 Fax

Environ Corp.  
18100 Von Karman Ave, Suite 600  
Irvine, CA 92612

Project: ENV081711-W1  
Project Number: WO-2011-71  
Project Manager: Ms. Rebekah Wale

Reported:  
17-Aug-11 12:29

**DRAFT: Soil Gas and Vapor Analysis**

**H&P Mobile Geochemistry, Inc.**

| Analyte  | Result | Reporting<br>Limit | Units | Dilution<br>Factor | Batch   | Prepared  | Analyzed  | Method    | Notes |
|--|--------|--------------------|-------|--------------------|---------|-----------|-----------|-----------|-------|
| <b>DRAFT: SG-5-4 (E108095-10) Vapor    Sampled: 17-Aug-11    Received: 17-Aug-11</b>     |        |                    |       |                    |         |           |           |           |       |
| Methane  | 10     | 10                 | ppmv  | 1                  | EH11705 | 17-Aug-11 | 17-Aug-11 | EPA 8015M |       |
| <b>DRAFT: SG-5-4 Dup (E108095-11) Vapor    Sampled: 17-Aug-11    Received: 17-Aug-11</b> |        |                    |       |                    |         |           |           |           |       |
| Methane  | 12     | 10                 | ppmv  | 1                  | EH11705 | 17-Aug-11 | 17-Aug-11 | EPA 8015M |       |



2470 Impala Drive  
Carlsbad, CA 92010  
760-804-9678 Phone  
760-804-9159 Fax

|  |  |                              |
|--|--|------------------------------|
| Environ Corp.<br>18100 Von Karman Ave, Suite 600<br>Irvine, CA 92612 | Project: ENV081711-W1<br>Project Number: WO-2011-71<br>Project Manager: Ms. Rebekah Wale | Reported:<br>17-Aug-11 12:29 |
|--|--|------------------------------|

**DRAFT: Soil Gas and Vapor Analysis - Quality Control**  
**H&P Mobile Geochemistry, Inc.**

| Analyte | Result | Reporting<br>Limit | Units | Spike<br>Level | Source<br>Result | %REC | %REC<br>Limits | RPD | RPD<br>Limit | Notes |
|---------|--------|--------------------|-------|----------------|------------------|------|----------------|-----|--------------|-------|
|---------|--------|--------------------|-------|----------------|------------------|------|----------------|-----|--------------|-------|

**Batch EH11705 - GC**

**Blank (EH11705-BLK1)**

Prepared & Analyzed: 17-Aug-11

|         |    |    |      |  |  |  |  |  |  |  |
|---------|----|----|------|--|--|--|--|--|--|--|
| Methane | ND | 10 | ppmv |  |  |  |  |  |  |  |
|---------|----|----|------|--|--|--|--|--|--|--|



2470 Impala Drive  
Carlsbad, CA 92010  
760-804-9678 Phone  
760-804-9159 Fax

Environ Corp.  
18100 Von Karman Ave, Suite 600  
Irvine, CA 92612

Project: ENV081711-W1  
Project Number: WO-2011-71  
Project Manager: Ms. Rebekah Wale

Reported:  
17-Aug-11 12:29

### Notes and Definitions

DET Analyte DETECTED  
ND Analyte NOT DETECTED at or above the reporting limit  
NR Not Reported  
dry Sample results reported on a dry weight basis  
RPD Relative Percent Difference

### Appendix

H&P Mobile Geochemistry, Inc. is approved as an Environmental Laboratory in conformance with the Environmental Laboratory Accreditation Program (CA) for the category of Volatile and Semi-Volatile Organic Chemistry of Hazardous Waste for the following methods:

Certificate# 2741, 2743, 2579, 2754 & 2740 approved for EPA 8260 and LUFT GC/MS  
Certificate# 2742, 2745, & 2741 approved for LUFT  
Certificate# 2745 & 2742 approved for EPA 418.1

H&P Mobile Geochemistry, Inc. is approved as an Environmental Laboratory in conformance with the National Environmental Accreditation Conference Standards for the category Environmental Analysis Air and Emissions for the following analytes and methods:

1,2,4-Trichlorobenzene by EPA TO-15 & TO-14A  
Hexachlorobutadiene by EPA TO-15 & TO-14A  
1,2,4-Trimethylbenzene by EPA TO-14A  
1,2-Dichlorobenzene by EPA TO-15 & TO-14A  
1,3,5-Trimethylbenzene by EPA TO-14A  
1,4-Dichlorobenzene by EPA TO-15 & TO-14A  
Benzene by EPA TO-15 & TO-14A  
Chlorobenzene by EPA TO-15 & TO-14A  
Ethyl benzene by EPA TO-15 & TO-14A  
Styrene by EPA TO-15 & TO-14A  
Toluene by EPA TO-15 & TO-14A  
Total Xylenes by EPA TO-15 & TO-14A  
1,1,1-Trichloroethane by EPA TO-15 & TO-14A  
1,1,2,2-Tetrachloroethane by EPA TO-15 & TO-14A  
1,1,2-Trichloroethane by EPA TO-15 & TO-14A  
1,1-Dichloroethane by EPA TO-15 & TO-14A  
1,1-Dichloroethene by EPA TO-15 & TO-14A  
1,2-Dichloroethane by EPA TO-15 & TO-14A  
1,2-Dichloropropane by EPA TO-15 & TO-14A  
Bromoform by EPA TO-15  
Bromomethane by EPA TO-15 & TO-14A  
Carbon tetrachloride by EPA TO-15 & TO-14A  
Chloroethane by EPA TO-15  
Chloroform by EPA TO-15 & TO-14A  
Chloromethane by EPA TO-15 & TO-14A  
cis-1,2-Dichloroethene by EPA TO-15  
cis-1,2-Dichloropropene by EPA TO-15 & TO-14A  
Methylene chloride by EPA TO-15 & TO-14A  
Tetrachloroethane by EPA TO-15 & TO-14A  
trans-1,2-Dichloroethene by EPA TO-15  
trans-1,2-Dichloropropene by EPA TO-15 & TO-14A  
Trichloroethene by EPA TO-15 & TO-14A  
Vinyl chloride by EPA TO-15 & TO-14A  
2-Butanone by EPA TO-15  
4-Methyl-2-Pentanone by EPA TO-15  
Hexane by EPA TO-15  
Methyl tert-butyl ether by EPA TO-15  
Vinyl acetate by EPA TO-15

This certification applies to samples analyzed in summa canisters.



Mobile  
Geochemistry  
Inc.

2470 Impala Dr., Carlsbad, CA 92010 • ph 760.804.9678 • fax 760.804.9159  
1855 Coronado Ave., Signal Hill, CA 90755 • ph 800.834.9888

# Chain of Custody Record

Date: 8/17/11

H&P Project # ENV081711-W1

Outside Lab:

Collector: Leonard Columbus

Page: 1 of 2

Client: Environ

Client Project # W0-2011-71

Project Contact: Rebekah Wale

Address: 18100 Von Karman Ave Suite 600

Location: 10,000 S. Santa Monica Blvd / Moreno Drive

Irving, CA 92612

Phone: 949-798-3693

Fax:

Turn around time:

Geotracker EDF: Yes  No

Sample Receipt Intact:  Yes  No

Global ID: \_\_\_\_\_

Seal Intact:  Yes  No  N/A

Excel EDD: Yes  No

Cold:  Yes  No  N/A

Temperature: \_\_\_\_\_

Special Instructions:

Lab Work Order # E108095/EH11705

|                 |       |            |   |  |  |   |  |  |   |   |   |         |  |
|-----------------|-------|------------|---|--|--|---|--|--|---|---|---|---------|--|
| 8260B Full List | 8260B | 418.1 TRPH | VOCs: Full List <input type="checkbox"/> 8260B <input type="checkbox"/> TO-15 | VOCs: Short List/DTC <input type="checkbox"/> 8260B <input type="checkbox"/> TO-15 | VOCs: SAM, 8260B <input type="checkbox"/> SAM A <input type="checkbox"/> SAM B | Naphthalene <input type="checkbox"/> 8260B <input type="checkbox"/> TO-15 | Oxyganes <input type="checkbox"/> 8260B <input type="checkbox"/> TO-15 | TPHv gas <input type="checkbox"/> 8260B <input type="checkbox"/> TO-15 | Ketones <input type="checkbox"/> 8260B <input type="checkbox"/> TO-15 | Other <input type="checkbox"/> 8260B <input type="checkbox"/> TO-15 | Leak Check Compound <input type="checkbox"/> 1,1 DFA <input type="checkbox"/> OTHER | Methane | Fixed Gases <input type="checkbox"/> CO2 <input type="checkbox"/> O2 <input type="checkbox"/> N2 |
|-----------------|-------|------------|---|--|--|---|--|--|---|---|---|---------|--|

| Sample Name | Field Point Name | Purge Vol | Time  | Date | Sample Type | Container Type  | Total # of containers |
|-------------|------------------|-----------|-------|------|-------------|-----------------|-----------------------|
| SG-9-4'     |                  | 330       | 09:30 | 8/17 | Vapor       | Plastic Syringe | 1                     |
| SG-8-4'     |                  | 330       | 09:55 | 8/17 | Vapor       | Plastic Syringe | 1                     |
| SG-10-4'    |                  | 300       | 10:20 | 8/17 | Vapor       | Plastic Syringe | 1                     |
| SG-7-4'     |                  | 330       | 10:40 | 8/17 | Vapor       | Plastic Syringe | 1                     |
| SG-6-4'     |                  | 330       | 11:00 | 8/17 | Vapor       | Plastic Syringe | 1                     |
| SG-4-4'     |                  | 330       | 11:10 | 8/17 | Vapor       | Plastic Syringe | 1                     |
| SG-1-4'     |                  | 330       | 11:20 | 8/17 | Vapor       | Plastic Syringe | 1                     |
| SG-2-4'     |                  | 330       | 11:30 | 8/17 | Vapor       | Plastic Syringe | 1                     |
| SG-3-4'     |                  | 330       | 11:40 | 8/17 | Vapor       | Plastic Syringe | 1                     |
| SG-5-4'     |                  | 350       | 12:00 | 8/17 | Vapor       | Plastic Syringe | 1                     |

Relinquished by: (Signature) Karjorn Environ (company)

Relinquished by: (Signature) \_\_\_\_\_ (company)

Relinquished by: (Signature) \_\_\_\_\_ (company)

Received by: (Signature) \_\_\_\_\_ (company)

Received by: (Signature) \_\_\_\_\_ (company)

Received by: (Signature) \_\_\_\_\_ (company)

Date: 8/17 Time: 12:20

Date: \_\_\_\_\_ Time: \_\_\_\_\_

Date: \_\_\_\_\_ Time: \_\_\_\_\_

\*Signature constitutes authorization to proceed with analysis and acceptance of condition on back.

Sample disposal instruction:  Disposal  Return to client  Pickup





Mobile  
Geochemistry  
Inc.

2470 Impala Dr., Carlsbad, CA 92010 • ph 760.804.9678 • fax 760.804.9159  
 1855 Coronado Ave., Signal Hill, CA 90755 • ph 800.834.9888

# Chain of Custody Record

Date: 8/17/11  
H&P Project # ENV081711-W1  
Outside Lab:

Client: Environ Collector: Leonard Calumbus Page: 2 of 2  
Address: 18100 Van Karman Ave Suite 600 Client Project # NO-2011-71 Project Contact: Rebekah Wake  
Irvine, CA 92612 Location: 10000 S Santa Monica Blvd/Moreno Dr  
Email: r.wake@environcorp.com Phone: 949.798.3693 Turn around time: \_\_\_\_\_ Fax: \_\_\_\_\_

GeoTracker EDF: Yes  No   
Global ID: \_\_\_\_\_  
Excel EDD: Yes  No   
Sample Receipt:  
Intact:  Yes  No   
Seal Intact:  Yes  No  N/A  
Cold:  Yes  No  N/A  
Temperature: \_\_\_\_\_

Special Instructions:  
E108095/EH11705  
Lab Work Order # \_\_\_\_\_  
Total # of containers: 1

| Sample Name  | Field Point Name | Purge Vol  | Time         | Date        | Sample Type          | Container Type |
|--|------------------|------------|--------------|-------------|----------------------|----------------|
| <u>SG-5-1 Dup</u>  |                  | <u>330</u> | <u>12:10</u> | <u>8/17</u> | <u>Vapor Springs</u> | <u>Plastic</u> |
| <b>SOIL VAPOR/AIR ANALYSIS</b>   |                  |            |              |             |                      |                |
| 8260B Full List  |                  |            |              |             |                      |                |
| 8260B <input type="checkbox"/> BTEX/OXY <input type="checkbox"/> TPH gas   |                  |            |              |             |                      |                |
| 8015M TPH <input type="checkbox"/> g <input type="checkbox"/> d <input type="checkbox"/> ex  |                  |            |              |             |                      |                |
| 418.1 TRPH   |                  |            |              |             |                      |                |
| VOC's: Full List <input type="checkbox"/> 8260B <input type="checkbox"/> TO-15   |                  |            |              |             |                      |                |
| VOC's: Short List/DTSC <input type="checkbox"/> 8260B <input type="checkbox"/> TO-15   |                  |            |              |             |                      |                |
| VOC's: SAM, 8260B <input type="checkbox"/> SAM A <input type="checkbox"/> SAM B  |                  |            |              |             |                      |                |
| Naphthalene <input type="checkbox"/> 8260B <input type="checkbox"/> TO-15  |                  |            |              |             |                      |                |
| Oxyganes <input type="checkbox"/> 8260B <input type="checkbox"/> TO-15   |                  |            |              |             |                      |                |
| TPHv gas <input type="checkbox"/> 8260B <input type="checkbox"/> TO-15   |                  |            |              |             |                      |                |
| Ketones <input type="checkbox"/> 8260B <input type="checkbox"/> TO-15  |                  |            |              |             |                      |                |
| Other <input type="checkbox"/> 8260B <input type="checkbox"/> TO-15  |                  |            |              |             |                      |                |
| Leak Check Compound <input type="checkbox"/> 1,1 DFA <input type="checkbox"/> OTHER  |                  |            |              |             |                      |                |
| Methane <input type="checkbox"/> <input type="checkbox"/> O <sub>2</sub> <input type="checkbox"/> N <sub>2</sub>                     |                  |            |              |             |                      |                |
| Fixed Gases <input type="checkbox"/> CO <sub>2</sub> <input type="checkbox"/> O <sub>2</sub> <input type="checkbox"/> N <sub>2</sub> |                  |            |              |             |                      |                |
| <b>SOIL/GW</b>   |                  |            |              |             |                      |                |
| 8260B Full List  |                  |            |              |             |                      |                |
| 8260B <input type="checkbox"/> BTEX/OXY <input type="checkbox"/> TPH gas   |                  |            |              |             |                      |                |
| 8015M TPH <input type="checkbox"/> g <input type="checkbox"/> d <input type="checkbox"/> ex  |                  |            |              |             |                      |                |
| 418.1 TRPH   |                  |            |              |             |                      |                |
| VOC's: Full List <input type="checkbox"/> 8260B <input type="checkbox"/> TO-15   |                  |            |              |             |                      |                |
| VOC's: Short List/DTSC <input type="checkbox"/> 8260B <input type="checkbox"/> TO-15   |                  |            |              |             |                      |                |
| VOC's: SAM, 8260B <input type="checkbox"/> SAM A <input type="checkbox"/> SAM B  |                  |            |              |             |                      |                |
| Naphthalene <input type="checkbox"/> 8260B <input type="checkbox"/> TO-15  |                  |            |              |             |                      |                |
| Oxyganes <input type="checkbox"/> 8260B <input type="checkbox"/> TO-15   |                  |            |              |             |                      |                |
| TPHv gas <input type="checkbox"/> 8260B <input type="checkbox"/> TO-15   |                  |            |              |             |                      |                |
| Ketones <input type="checkbox"/> 8260B <input type="checkbox"/> TO-15  |                  |            |              |             |                      |                |
| Other <input type="checkbox"/> 8260B <input type="checkbox"/> TO-15  |                  |            |              |             |                      |                |
| Leak Check Compound <input type="checkbox"/> 1,1 DFA <input type="checkbox"/> OTHER  |                  |            |              |             |                      |                |
| Methane <input type="checkbox"/> <input type="checkbox"/> O <sub>2</sub> <input type="checkbox"/> N <sub>2</sub>                     |                  |            |              |             |                      |                |
| Fixed Gases <input type="checkbox"/> CO <sub>2</sub> <input type="checkbox"/> O <sub>2</sub> <input type="checkbox"/> N <sub>2</sub> |                  |            |              |             |                      |                |

Relinquished by: (Signature) Kal Johnson (company) ENNVIRON Received by: (Signature) \_\_\_\_\_  
Relinquished by: (Signature) \_\_\_\_\_ (company) \_\_\_\_\_ Date: 8/17 Time: 12:20  
Relinquished by: (Signature) \_\_\_\_\_ (company) \_\_\_\_\_ Date: \_\_\_\_\_ Time: \_\_\_\_\_

\*Signature constitutes authorization to proceed with analysis and acceptance of condition on back.  
Sample disposal instruction:  Disposal  Return to client  Pickup

18 August 2011



Ms. Rebekah Wale  
Environ Corp.  
18100 Von Karman Ave, Suite 600  
Irvine, CA 92612

H&P Project: ENV081711-W1  
Client Project: WO-2011-71

Dear Ms. Rebekah Wale:

Enclosed is the analytical report for the above referenced project. The data herein applies to samples as received by H&P Mobile Geochemistry, Inc. on 18-Aug-11 which were analyzed in accordance with the attached Chain of Custody record(s).

The results for all sample analyses and required QA/QC analyses are presented in the following sections and summarized in the documents:

- Sample Summary
- Case Narrative (if applicable)
- Sample Results
- Quality Control Summary
- Notes and Definitions / Appendix
- Chain of Custody

Unless otherwise noted, all analyses were performed and reviewed in compliance with our Quality Systems Manual and Standard Operating Procedures. This report shall not be reproduced, except in full, without the written approval of H&P Mobile Geochemistry, Inc.

We at H&P Mobile Geochemistry, Inc. sincerely appreciate the opportunity to provide analytical services to you on this project. If you have any questions or concerns regarding this analytical report, please contact me at your convenience at 760-804-9678.

Sincerely,

Janis Villarreal  
Laboratory Director

H&P Mobile Geochemistry, Inc. operates under CA Environmental Lab Accreditation Program Numbers 2579, 2740, 2741, 2742, 2743, 2745 and 2754. National Environmental Laboratory Accreditation Conference (NELAC) Standards Lab #11845



2470 Impala Drive  
Carlsbad, CA 92010  
760-804-9678 Phone  
760-804-9159 Fax

Environ Corp.  
18100 Von Karman Ave, Suite 600  
Irvine, CA 92612

Project: ENV081711-W1  
Project Number: WO-2011-71  
Project Manager: Ms. Rebekah Wale

Reported:  
18-Aug-11 15:02

**ANALYTICAL REPORT FOR SAMPLES**

| Sample ID            | Laboratory ID | Matrix | Date Sampled | Date Received |
|----------------------|---------------|--------|--------------|---------------|
| DRAFT: SG-8-5'       | E108103-01    | Vapor  | 18-Aug-11    | 18-Aug-11     |
| DRAFT: SG-8-10'      | E108103-02    | Vapor  | 18-Aug-11    | 18-Aug-11     |
| DRAFT: SG-8-20'      | E108103-03    | Vapor  | 18-Aug-11    | 18-Aug-11     |
| DRAFT: SG-4-5'       | E108103-04    | Vapor  | 18-Aug-11    | 18-Aug-11     |
| DRAFT: SG-4-10'      | E108103-05    | Vapor  | 18-Aug-11    | 18-Aug-11     |
| DRAFT: SG-4-20'      | E108103-06    | Vapor  | 18-Aug-11    | 18-Aug-11     |
| DRAFT: SG-5-5'       | E108103-07    | Vapor  | 18-Aug-11    | 18-Aug-11     |
| DRAFT: SG-5-10'      | E108103-08    | Vapor  | 18-Aug-11    | 18-Aug-11     |
| DRAFT: SG-6-5'       | E108103-09    | Vapor  | 18-Aug-11    | 18-Aug-11     |
| DRAFT: SG-6-10'      | E108103-10    | Vapor  | 18-Aug-11    | 18-Aug-11     |
| DRAFT: SG-6-20'      | E108103-11    | Vapor  | 18-Aug-11    | 18-Aug-11     |
| DRAFT: SG-10-5'      | E108103-12    | Vapor  | 18-Aug-11    | 18-Aug-11     |
| DRAFT: SG-10-10'     | E108103-13    | Vapor  | 18-Aug-11    | 18-Aug-11     |
| DRAFT: SG-10-10' Dup | E108103-14    | Vapor  | 18-Aug-11    | 18-Aug-11     |
| DRAFT: SG-5-20'      | E108103-15    | Vapor  | 18-Aug-11    | 18-Aug-11     |
| DRAFT: SG-10-20'     | E108103-16    | Vapor  | 18-Aug-11    | 18-Aug-11     |



2470 Impala Drive  
 Carlsbad, CA 92010  
 760-804-9678 Phone  
 760-804-9159 Fax

Environ Corp.  
 18100 Von Karman Ave, Suite 600  
 Irvine, CA 92612

Project: ENV081711-W1  
 Project Number: WO-2011-71  
 Project Manager: Ms. Rebekah Wale

Reported:  
 18-Aug-11 15:02

**DRAFT: Soil Gas and Vapor Analysis**

**H&P Mobile Geochemistry, Inc.**

| Analyte  | Result | Reporting Limit | Units | Dilution Factor | Batch   | Prepared  | Analyzed  | Method    | Notes |
|--|--------|-----------------|-------|-----------------|---------|-----------|-----------|-----------|-------|
| <b>DRAFT: SG-8-5' (E108103-01) Vapor</b> <b>Sampled: 18-Aug-11</b> <b>Received: 18-Aug-11</b>  |        |                 |       |                 |         |           |           |           |       |
| Methane  | 23     | 10              | ppmv  | 1               | EH11803 | 18-Aug-11 | 18-Aug-11 | EPA 8015M |       |
| <b>DRAFT: SG-8-10' (E108103-02) Vapor</b> <b>Sampled: 18-Aug-11</b> <b>Received: 18-Aug-11</b> |        |                 |       |                 |         |           |           |           |       |
| Methane  | 110    | 10              | ppmv  | 1               | EH11803 | 18-Aug-11 | 18-Aug-11 | EPA 8015M |       |
| <b>DRAFT: SG-8-20' (E108103-03) Vapor</b> <b>Sampled: 18-Aug-11</b> <b>Received: 18-Aug-11</b> |        |                 |       |                 |         |           |           |           |       |
| Methane  | ND     | 10              | ppmv  | 1               | EH11803 | 18-Aug-11 | 18-Aug-11 | EPA 8015M |       |
| <b>DRAFT: SG-4-5' (E108103-04) Vapor</b> <b>Sampled: 18-Aug-11</b> <b>Received: 18-Aug-11</b>  |        |                 |       |                 |         |           |           |           |       |
| Methane  | ND     | 10              | ppmv  | 1               | EH11803 | 18-Aug-11 | 18-Aug-11 | EPA 8015M |       |
| <b>DRAFT: SG-4-10' (E108103-05) Vapor</b> <b>Sampled: 18-Aug-11</b> <b>Received: 18-Aug-11</b> |        |                 |       |                 |         |           |           |           |       |
| Methane  | ND     | 10              | ppmv  | 1               | EH11803 | 18-Aug-11 | 18-Aug-11 | EPA 8015M |       |
| <b>DRAFT: SG-4-20' (E108103-06) Vapor</b> <b>Sampled: 18-Aug-11</b> <b>Received: 18-Aug-11</b> |        |                 |       |                 |         |           |           |           |       |
| Methane  | 60     | 10              | ppmv  | 1               | EH11803 | 18-Aug-11 | 18-Aug-11 | EPA 8015M |       |
| <b>DRAFT: SG-5-5' (E108103-07) Vapor</b> <b>Sampled: 18-Aug-11</b> <b>Received: 18-Aug-11</b>  |        |                 |       |                 |         |           |           |           |       |
| Methane  | 34     | 10              | ppmv  | 1               | EH11803 | 18-Aug-11 | 18-Aug-11 | EPA 8015M |       |
| <b>DRAFT: SG-5-10' (E108103-08) Vapor</b> <b>Sampled: 18-Aug-11</b> <b>Received: 18-Aug-11</b> |        |                 |       |                 |         |           |           |           |       |
| Methane  | 120    | 10              | ppmv  | 1               | EH11803 | 18-Aug-11 | 18-Aug-11 | EPA 8015M |       |
| <b>DRAFT: SG-6-5' (E108103-09) Vapor</b> <b>Sampled: 18-Aug-11</b> <b>Received: 18-Aug-11</b>  |        |                 |       |                 |         |           |           |           |       |
| Methane  | ND     | 10              | ppmv  | 1               | EH11803 | 18-Aug-11 | 18-Aug-11 | EPA 8015M |       |



2470 Impala Drive  
Carlsbad, CA 92010  
760-804-9678 Phone  
760-804-9159 Fax

|  |  |                              |
|--|--|------------------------------|
| Environ Corp.<br>18100 Von Karman Ave, Suite 600<br>Irvine, CA 92612 | Project: ENV081711-W1<br>Project Number: WO-2011-71<br>Project Manager: Ms. Rebekah Wale | Reported:<br>18-Aug-11 15:02 |
|--|--|------------------------------|

**DRAFT: Soil Gas and Vapor Analysis**  
**H&P Mobile Geochemistry, Inc.**

| Analyte   | Result | Reporting Limit | Units | Dilution Factor | Batch   | Prepared  | Analyzed  | Method    | Notes |
|---|--------|-----------------|-------|-----------------|---------|-----------|-----------|-----------|-------|
| <b>DRAFT: SG-6-10' (E108103-10) Vapor</b> <b>Sampled: 18-Aug-11</b> <b>Received: 18-Aug-11</b>      |        |                 |       |                 |         |           |           |           |       |
| Methane   | ND     | 10              | ppmv  | 1               | EH11803 | 18-Aug-11 | 18-Aug-11 | EPA 8015M |       |
| <b>DRAFT: SG-6-20' (E108103-11) Vapor</b> <b>Sampled: 18-Aug-11</b> <b>Received: 18-Aug-11</b>      |        |                 |       |                 |         |           |           |           |       |
| Methane   | 94     | 10              | ppmv  | 1               | EH11803 | 18-Aug-11 | 18-Aug-11 | EPA 8015M |       |
| <b>DRAFT: SG-10-5' (E108103-12) Vapor</b> <b>Sampled: 18-Aug-11</b> <b>Received: 18-Aug-11</b>      |        |                 |       |                 |         |           |           |           |       |
| Methane   | 57     | 10              | ppmv  | 1               | EH11803 | 18-Aug-11 | 18-Aug-11 | EPA 8015M |       |
| <b>DRAFT: SG-10-10' (E108103-13) Vapor</b> <b>Sampled: 18-Aug-11</b> <b>Received: 18-Aug-11</b>     |        |                 |       |                 |         |           |           |           |       |
| Methane   | 12     | 10              | ppmv  | 1               | EH11803 | 18-Aug-11 | 18-Aug-11 | EPA 8015M |       |
| <b>DRAFT: SG-10-10' Dup (E108103-14) Vapor</b> <b>Sampled: 18-Aug-11</b> <b>Received: 18-Aug-11</b> |        |                 |       |                 |         |           |           |           |       |
| Methane   | ND     | 10              | ppmv  | 1               | EH11803 | 18-Aug-11 | 18-Aug-11 | EPA 8015M |       |
| <b>DRAFT: SG-5-20' (E108103-15) Vapor</b> <b>Sampled: 18-Aug-11</b> <b>Received: 18-Aug-11</b>      |        |                 |       |                 |         |           |           |           |       |
| Methane   | ND     | 10              | ppmv  | 1               | EH11803 | 18-Aug-11 | 18-Aug-11 | EPA 8015M |       |
| <b>DRAFT: SG-10-20' (E108103-16) Vapor</b> <b>Sampled: 18-Aug-11</b> <b>Received: 18-Aug-11</b>     |        |                 |       |                 |         |           |           |           |       |
| Methane   | ND     | 10              | ppmv  | 1               | EH11803 | 18-Aug-11 | 18-Aug-11 | EPA 8015M |       |



2470 Impala Drive  
 Carlsbad, CA 92010  
 760-804-9678 Phone  
 760-804-9159 Fax

|  |  |                              |
|--|--|------------------------------|
| Environ Corp.<br>18100 Von Karman Ave, Suite 600<br>Irvine, CA 92612 | Project: ENV081711-W1<br>Project Number: WO-2011-71<br>Project Manager: Ms. Rebekah Wale | Reported:<br>18-Aug-11 15:02 |
|--|--|------------------------------|

**DRAFT: Soil Gas and Vapor Analysis - Quality Control**  
**H&P Mobile Geochemistry, Inc.**

| Analyte | Result | Reporting Limit | Units | Spike Level | Source Result | %REC | %REC Limits | RPD | RPD Limit | Notes |
|---------|--------|-----------------|-------|-------------|---------------|------|-------------|-----|-----------|-------|
|---------|--------|-----------------|-------|-------------|---------------|------|-------------|-----|-----------|-------|

**Batch EH11803 - GC**

|                             |                                |    |      |  |  |  |  |  |  |  |
|-----------------------------|--------------------------------|----|------|--|--|--|--|--|--|--|
| <b>Blank (EH11803-BLK1)</b> | Prepared & Analyzed: 18-Aug-11 |    |      |  |  |  |  |  |  |  |
| Methane                     | ND                             | 10 | ppmv |  |  |  |  |  |  |  |



2470 Impala Drive  
Carlsbad, CA 92010  
760-804-9678 Phone  
760-804-9159 Fax

Environ Corp.  
18100 Von Karman Ave, Suite 600  
Irvine, CA 92612

Project: ENV081711-W1  
Project Number: WO-2011-71  
Project Manager: Ms. Rebekah Wale

Reported:  
18-Aug-11 15:02

### Notes and Definitions

DET Analyte DETECTED  
ND Analyte NOT DETECTED at or above the reporting limit  
NR Not Reported  
dry Sample results reported on a dry weight basis  
RPD Relative Percent Difference

### Appendix

H&P Mobile Geochemistry, Inc. is approved as an Environmental Laboratory in conformance with the Environmental Laboratory Accreditation Program (CA) for the category of Volatile and Semi-Volatile Organic Chemistry of Hazardous Waste for the following methods:

Certificate# 2741, 2743, 2579, 2754 & 2740 approved for EPA 8260 and LUFT GC/MS  
Certificate# 2742, 2745, & 2741 approved for LUFT  
Certificate# 2745 & 2742 approved for EPA 418.1

H&P Mobile Geochemistry, Inc. is approved as an Environmental Laboratory in conformance with the National Environmental Accreditation Conference Standards for the category Environmental Analysis Air and Emissions for the following analytes and methods:

1,2,4-Trichlorobenzene by EPA TO-15 & TO-14A  
Hexachlorobutadiene by EPA TO-15 & TO-14A  
1,2,4-Trimethylbenzene by EPA TO-14A  
1,2-Dichlorobenzene by EPA TO-15 & TO-14A  
1,3,5-Trimethylbenzene by EPA TO-14A  
1,4-Dichlorobenzene by EPA TO-15 & TO-14A  
Benzene by EPA TO-15 & TO-14A  
Chlorobenzene by EPA TO-15 & TO-14A  
Ethyl benzene by EPA TO-15 & TO-14A  
Styrene by EPA TO-15 & TO-14A  
Toluene by EPA TO-15 & TO-14A  
Total Xylenes by EPA TO-15 & TO-14A  
1,1,1-Trichloroethane by EPA TO-15 & TO-14A  
1,1,2,2-Tetrachloroethane by EPA TO-15 & TO-14A  
1,1,2-Trichloroethane by EPA TO-15 & TO-14A  
1,1-Dichloroethane by EPA TO-15 & TO-14A  
1,1-Dichloroethene by EPA TO-15 & TO-14A  
1,2-Dichloroethane by EPA TO-15 & TO-14A  
1,2-Dichloropropane by EPA TO-15 & TO-14A  
Bromoforn by EPA TO-15  
Bromomethane by EPA TO-15 & TO-14A  
Carbon tetrachloride by EPA TO-15 & TO-14A  
Chloroethane by EPA TO-15  
Chloroform by EPA TO-15 & TO-14A  
Chloromethane by EPA TO-15 & TO-14A  
cis-1,2-Dichloroethene by EPA TO-15  
cis-1,2-Dichloropropene by EPA TO-15 & TO-14A  
Methylene chloride by EPA TO-15 & TO-14A  
Tetrachloroethane by EPA TO-15 & TO-14A  
trans-1,2-Dichloroethene by EPA TO-15  
trans-1,2-Dichloropropene by EPA TO-15 & TO-14A  
Trichloroethene by EPA TO-15 & TO-14A  
Vinyl chloride by EPA TO-15 & TO-14A  
2-Butanone by EPA TO-15  
4-Methyl-2-Pentanone by EPA TO-15  
Hexane by EPA TO-15  
Methyl tert-butyl ether by EPA TO-15  
Vinyl acetate by EPA TO-15

This certification applies to samples analyzed in summa canisters.

# Chain of Custody Record

**H&P** Mobile  
Geochemistry  
Inc.

2470 Impala Dr., Carlsbad, CA 92010 • ph 760.804.9678 • fax 760.804.9159  
1855 Coronado Ave., Signal Hill, CA 90755 • ph 800.834.9888

Date: 8/18/11

H&P Project # ENV081711-W1

Outside Lab:

Client: ENVIRON Collector: D. Petryshin Page: 2 of 2  
 Address: 18100 Von Karman Ave Suite 600 Client Project # NO-2011-71  
IRVINE CA 92612 Location: 10100 S. Serrano Monica Blvd/Moreno Drive  
 Email: rwale@environcorp.com Phone: 949-798-3693 Fax: \_\_\_\_\_  
 Turn around time: \_\_\_\_\_

Geotracker EDF: Yes  No   
 Global ID: \_\_\_\_\_  
 Excel EDD: Yes  No   
 Sample Receipt: Intact:  Yes  No   
 Seal Intact:  Yes  No  N/A  
 Cold:  Yes  No  N/A  
 Temperature: \_\_\_\_\_

Special Instructions:

Lab Work Order # E108103/EH11803

|                 |       |           |            |   |   |  |   |  |   |   |   |   |         |  |
|-----------------|-------|-----------|------------|---|---|--|---|--|---|---|---|---|---------|--|
| 8260B Full List | 8260B | 8015M TPH | 418.1 TRPH | VOCs: Full List <input type="checkbox"/> 8260B <input type="checkbox"/> TO-15 | VOCs: Short List/DTSC <input type="checkbox"/> 8260B <input type="checkbox"/> TO-15 | VOCs: SAM, 8260B <input type="checkbox"/> SAM A <input type="checkbox"/> SAM B | Naphthalene <input type="checkbox"/> 8260B <input type="checkbox"/> TO-15 | Oxygenates <input type="checkbox"/> 8260B <input type="checkbox"/> TO-15 | TPH gas <input type="checkbox"/> 8260B <input type="checkbox"/> TO-15 | Ketones <input type="checkbox"/> 8260B <input type="checkbox"/> TO-15 | Other <input type="checkbox"/> 8260B <input type="checkbox"/> TO-15 | Leak Check Compound <input type="checkbox"/> 1,1 DPA <input type="checkbox"/> OTHER | Methane | Fixed Gases <input type="checkbox"/> CO2 <input type="checkbox"/> O2 <input type="checkbox"/> N2 |
|-----------------|-------|-----------|------------|---|---|--|---|--|---|---|---|---|---------|--|

## SOIL VAPOR/AIR ANALYSIS

| Sample Name         | Field Point Name | Purge Vol | Time | Date | Sample Type | Container Type | Total # of containers |
|---------------------|------------------|-----------|------|------|-------------|----------------|-----------------------|
| SG-6-20'            |                  | 378       | 1411 | 8/18 | Vapor       | Syringe        | 1                     |
| SG-10-5'            |                  | 333       | 1416 |      |             |                | 1                     |
| SG-10-10'           |                  | 348       | 1421 |      |             |                | 1                     |
| SG-10-10'Dup        |                  | 408       | 1421 |      |             |                | 1                     |
| <del>SG-8-20'</del> |                  |           |      |      |             |                |                       |
| SG-5-20'            |                  | 110cc     | 1438 |      |             |                | 1                     |
| SG-10-20'           |                  | 90cc      | 1444 |      |             |                | 1                     |

Relinquished by: (Signature) \_\_\_\_\_ (company) \_\_\_\_\_ Date: 8/18 Time: 14:50  
 Relinquished by: (Signature) \_\_\_\_\_ (company) \_\_\_\_\_ Date: \_\_\_\_\_ Time: \_\_\_\_\_  
 Relinquished by: (Signature) \_\_\_\_\_ (company) \_\_\_\_\_ Date: \_\_\_\_\_ Time: \_\_\_\_\_

Sample disposal instruction:  Disposal  Return to client  Pickup

\*Signature constitutes authorization to proceed with analysis and acceptance of condition on back.



**Chain of Custody Record**

Date: 8/18/11  
 H&P Project # ENV081711-W/  
 Outside Lab: \_\_\_\_\_

Client: Environ Collector: D. Petyshin Page: 1 of 2  
 Address: 18100 Von Karman Ave Suite 600 Client Project # VO-2011-71  
Irvine, CA 92612 Location: 1000 S. Santa Monica Blvd/Mereno Drive  
 Email: rwale@environcorp.com Phone: 949-798-3693 Box: \_\_\_\_\_  
 Turn around time: \_\_\_\_\_

Geotracker EDF: Yes  No   
 Global ID: \_\_\_\_\_  
 Excel EDD: Yes  No   
 Sample Receipt:  
 Intact:  Yes  No   
 Seal Intact:  Yes  No  N/A  
 Cold:  Yes  No  N/A  
 Temperature: \_\_\_\_\_

Special Instructions: \_\_\_\_\_  
 Lab Work Order # E 108103 / E411803  
 Total # of containers: \_\_\_\_\_

| Sample Name | Field Point Name | Purge Vol | Time | Date    | Sample Type | Container Type |
|-------------|------------------|-----------|------|---------|-------------|----------------|
| SG-8-5'     |                  | 333       | 1325 | 8/18/11 | Vapor       | Syringe        |
| SG-8-10'    |                  | 348       | 1330 |         |             |                |
| SG-8-20'    |                  | 120       | 1433 |         |             |                |
| SG-4-5'     |                  | 333       | 1339 |         |             |                |
| SG-4-10'    |                  | 348       | 1343 |         |             |                |
| SG-4-20'    |                  | 378       | 1348 |         |             |                |
| SG-5-5'     |                  | 330       | 1352 |         |             |                |
| SG-5-10'    |                  | 348       | 1356 |         |             |                |
| SG-6-5'     |                  | 333       | 1401 |         |             |                |
| SG-6-10'    |                  | 348       | 1406 |         |             |                |

Relinquished by: (Signature) \_\_\_\_\_ (company) \_\_\_\_\_  
 Relinquished by: (Signature) \_\_\_\_\_ (company) \_\_\_\_\_  
 Relinquished by: (Signature) \_\_\_\_\_ (company) \_\_\_\_\_  
 Date: 8/18 Time: 14:50  
 Date: \_\_\_\_\_ Time: \_\_\_\_\_  
 Date: \_\_\_\_\_ Time: \_\_\_\_\_

Sample disposal instruction:  Disposal  Return to client  Pickup

19 August 2011



Ms. Rebekah Wale  
Environ Corp.  
18100 Von Karman Ave, Suite 600  
Irvine, CA 92612

H&P Project: ENV081711-W1  
Client Project: WO-2011-71

Dear Ms. Rebekah Wale:

Enclosed is the analytical report for the above referenced project. The data herein applies to samples as received by H&P Mobile Geochemistry, Inc. on 19-Aug-11 which were analyzed in accordance with the attached Chain of Custody record(s).

The results for all sample analyses and required QA/QC analyses are presented in the following sections and summarized in the documents:

- Sample Summary
- Case Narrative (if applicable)
- Sample Results
- Quality Control Summary
- Notes and Definitions / Appendix
- Chain of Custody

Unless otherwise noted, all analyses were performed and reviewed in compliance with our Quality Systems Manual and Standard Operating Procedures. This report shall not be reproduced, except in full, without the written approval of H&P Mobile Geochemistry, Inc.

We at H&P Mobile Geochemistry, Inc. sincerely appreciate the opportunity to provide analytical services to you on this project. If you have any questions or concerns regarding this analytical report, please contact me at your convenience at 760-804-9678.

Sincerely,

Janis Villarreal  
Laboratory Director

H&P Mobile Geochemistry, Inc. operates under CA Environmental Lab Accreditation Program Numbers 2579, 2740, 2741, 2742, 2743, 2745 and 2754. National Environmental Laboratory Accreditation Conference (NELAC) Standards Lab #11845



2470 Impala Drive  
Carlsbad, CA 92010  
760-804-9678 Phone  
760-804-9159 Fax

Environ Corp.  
18100 Von Karman Ave, Suite 600  
Irvine, CA 92612

Project: ENV081711-W1  
Project Number: WO-2011-71  
Project Manager: Ms. Rebekah Wale

Reported:  
19-Aug-11 14:46

**ANALYTICAL REPORT FOR SAMPLES**

| Sample ID          | Laboratory ID | Matrix | Date Sampled | Date Received |
|--------------------|---------------|--------|--------------|---------------|
| DRAFT: SG-8-5'     | E108107-01    | Vapor  | 19-Aug-11    | 19-Aug-11     |
| DRAFT: SG-8-10'    | E108107-02    | Vapor  | 19-Aug-11    | 19-Aug-11     |
| DRAFT: SG-4-5'     | E108107-03    | Vapor  | 19-Aug-11    | 19-Aug-11     |
| DRAFT: SG-4-10'    | E108107-04    | Vapor  | 19-Aug-11    | 19-Aug-11     |
| DRAFT: SG-4-20'    | E108107-05    | Vapor  | 19-Aug-11    | 19-Aug-11     |
| DRAFT: SG-5-5'     | E108107-06    | Vapor  | 19-Aug-11    | 19-Aug-11     |
| DRAFT: SG-5-10'    | E108107-07    | Vapor  | 19-Aug-11    | 19-Aug-11     |
| DRAFT: SG-5-20'    | E108107-08    | Vapor  | 19-Aug-11    | 19-Aug-11     |
| DRAFT: SG-6-5'     | E108107-09    | Vapor  | 19-Aug-11    | 19-Aug-11     |
| DRAFT: SG-6-5' Dup | E108107-10    | Vapor  | 19-Aug-11    | 19-Aug-11     |
| DRAFT: SG-6-10'    | E108107-11    | Vapor  | 19-Aug-11    | 19-Aug-11     |
| DRAFT: SG-6-20'    | E108107-12    | Vapor  | 19-Aug-11    | 19-Aug-11     |
| DRAFT: SG-10-5'    | E108107-13    | Vapor  | 19-Aug-11    | 19-Aug-11     |
| DRAFT: SG-10-10'   | E108107-14    | Vapor  | 19-Aug-11    | 19-Aug-11     |
| DRAFT: SG-8-20'    | E108107-15    | Vapor  | 19-Aug-11    | 19-Aug-11     |
| DRAFT: SG-10-20'   | E108107-16    | Vapor  | 19-Aug-11    | 19-Aug-11     |



2470 Impala Drive  
 Carlsbad, CA 92010  
 760-804-9678 Phone  
 760-804-9159 Fax

|  |  |                              |
|--|--|------------------------------|
| Environ Corp.<br>18100 Von Karman Ave, Suite 600<br>Irvine, CA 92612 | Project: ENV081711-W1<br>Project Number: WO-2011-71<br>Project Manager: Ms. Rebekah Wale | Reported:<br>19-Aug-11 14:46 |
|--|--|------------------------------|

**DRAFT: Soil Gas and Vapor Analysis**

**H&P Mobile Geochemistry, Inc.**

| Analyte  | Result | Reporting Limit | Units | Dilution Factor | Batch   | Prepared  | Analyzed  | Method    | Notes |
|--|--------|-----------------|-------|-----------------|---------|-----------|-----------|-----------|-------|
| <b>DRAFT: SG-8-5' (E108107-01) Vapor Sampled: 19-Aug-11 Received: 19-Aug-11</b>  |        |                 |       |                 |         |           |           |           |       |
| Methane  | ND     | 10              | ppmv  | 1               | EH11902 | 19-Aug-11 | 19-Aug-11 | EPA 8015M |       |
| <b>DRAFT: SG-8-10' (E108107-02) Vapor Sampled: 19-Aug-11 Received: 19-Aug-11</b> |        |                 |       |                 |         |           |           |           |       |
| Methane  | 26     | 10              | ppmv  | 1               | EH11902 | 19-Aug-11 | 19-Aug-11 | EPA 8015M |       |
| <b>DRAFT: SG-4-5' (E108107-03) Vapor Sampled: 19-Aug-11 Received: 19-Aug-11</b>  |        |                 |       |                 |         |           |           |           |       |
| Methane  | ND     | 10              | ppmv  | 1               | EH11902 | 19-Aug-11 | 19-Aug-11 | EPA 8015M |       |
| <b>DRAFT: SG-4-10' (E108107-04) Vapor Sampled: 19-Aug-11 Received: 19-Aug-11</b> |        |                 |       |                 |         |           |           |           |       |
| Methane  | ND     | 10              | ppmv  | 1               | EH11902 | 19-Aug-11 | 19-Aug-11 | EPA 8015M |       |
| <b>DRAFT: SG-4-20' (E108107-05) Vapor Sampled: 19-Aug-11 Received: 19-Aug-11</b> |        |                 |       |                 |         |           |           |           |       |
| Methane  | 49     | 10              | ppmv  | 1               | EH11902 | 19-Aug-11 | 19-Aug-11 | EPA 8015M |       |
| <b>DRAFT: SG-5-5' (E108107-06) Vapor Sampled: 19-Aug-11 Received: 19-Aug-11</b>  |        |                 |       |                 |         |           |           |           |       |
| Methane  | ND     | 10              | ppmv  | 1               | EH11902 | 19-Aug-11 | 19-Aug-11 | EPA 8015M |       |
| <b>DRAFT: SG-5-10' (E108107-07) Vapor Sampled: 19-Aug-11 Received: 19-Aug-11</b> |        |                 |       |                 |         |           |           |           |       |
| Methane  | 57     | 10              | ppmv  | 1               | EH11902 | 19-Aug-11 | 19-Aug-11 | EPA 8015M |       |
| <b>DRAFT: SG-5-20' (E108107-08) Vapor Sampled: 19-Aug-11 Received: 19-Aug-11</b> |        |                 |       |                 |         |           |           |           |       |
| Methane  | ND     | 10              | ppmv  | 1               | EH11902 | 19-Aug-11 | 19-Aug-11 | EPA 8015M |       |
| <b>DRAFT: SG-6-5' (E108107-09) Vapor Sampled: 19-Aug-11 Received: 19-Aug-11</b>  |        |                 |       |                 |         |           |           |           |       |
| Methane  | ND     | 10              | ppmv  | 1               | EH11902 | 19-Aug-11 | 19-Aug-11 | EPA 8015M |       |



2470 Impala Drive  
 Carlsbad, CA 92010  
 760-804-9678 Phone  
 760-804-9159 Fax

|  |  |                              |
|--|--|------------------------------|
| Environ Corp.<br>18100 Von Karman Ave, Suite 600<br>Irvine, CA 92612 | Project: ENV081711-W1<br>Project Number: WO-2011-71<br>Project Manager: Ms. Rebekah Wale | Reported:<br>19-Aug-11 14:46 |
|--|--|------------------------------|

**DRAFT: Soil Gas and Vapor Analysis**  
**H&P Mobile Geochemistry, Inc.**

| Analyte   | Result | Reporting Limit | Units | Dilution Factor | Batch   | Prepared  | Analyzed  | Method    | Notes |
|---|--------|-----------------|-------|-----------------|---------|-----------|-----------|-----------|-------|
| <b>DRAFT: SG-6-5' Dup (E108107-10) Vapor</b> <b>Sampled: 19-Aug-11</b> <b>Received: 19-Aug-11</b> |        |                 |       |                 |         |           |           |           |       |
| Methane   | ND     | 10              | ppmv  | 1               | EH11902 | 19-Aug-11 | 19-Aug-11 | EPA 8015M |       |
| <b>DRAFT: SG-6-10' (E108107-11) Vapor</b> <b>Sampled: 19-Aug-11</b> <b>Received: 19-Aug-11</b>    |        |                 |       |                 |         |           |           |           |       |
| Methane   | ND     | 10              | ppmv  | 1               | EH11902 | 19-Aug-11 | 19-Aug-11 | EPA 8015M |       |
| <b>DRAFT: SG-6-20' (E108107-12) Vapor</b> <b>Sampled: 19-Aug-11</b> <b>Received: 19-Aug-11</b>    |        |                 |       |                 |         |           |           |           |       |
| Methane   | 74     | 10              | ppmv  | 1               | EH11902 | 19-Aug-11 | 19-Aug-11 | EPA 8015M |       |
| <b>DRAFT: SG-10-5' (E108107-13) Vapor</b> <b>Sampled: 19-Aug-11</b> <b>Received: 19-Aug-11</b>    |        |                 |       |                 |         |           |           |           |       |
| Methane   | 24     | 10              | ppmv  | 1               | EH11902 | 19-Aug-11 | 19-Aug-11 | EPA 8015M |       |
| <b>DRAFT: SG-10-10' (E108107-14) Vapor</b> <b>Sampled: 19-Aug-11</b> <b>Received: 19-Aug-11</b>   |        |                 |       |                 |         |           |           |           |       |
| Methane   | 17     | 10              | ppmv  | 1               | EH11902 | 19-Aug-11 | 19-Aug-11 | EPA 8015M |       |
| <b>DRAFT: SG-8-20' (E108107-15) Vapor</b> <b>Sampled: 19-Aug-11</b> <b>Received: 19-Aug-11</b>    |        |                 |       |                 |         |           |           |           |       |
| Methane   | ND     | 10              | ppmv  | 1               | EH11902 | 19-Aug-11 | 19-Aug-11 | EPA 8015M |       |
| <b>DRAFT: SG-10-20' (E108107-16) Vapor</b> <b>Sampled: 19-Aug-11</b> <b>Received: 19-Aug-11</b>   |        |                 |       |                 |         |           |           |           |       |
| Methane   | ND     | 10              | ppmv  | 1               | EH11902 | 19-Aug-11 | 19-Aug-11 | EPA 8015M |       |



2470 Impala Drive  
Carlsbad, CA 92010  
760-804-9678 Phone  
760-804-9159 Fax

|  |  |                              |
|--|--|------------------------------|
| Environ Corp.<br>18100 Von Karman Ave, Suite 600<br>Irvine, CA 92612 | Project: ENV081711-W1<br>Project Number: WO-2011-71<br>Project Manager: Ms. Rebekah Wale | Reported:<br>19-Aug-11 14:46 |
|--|--|------------------------------|

**DRAFT: Soil Gas and Vapor Analysis - Quality Control**  
**H&P Mobile Geochemistry, Inc.**

| Analyte | Result | Reporting<br>Limit | Units | Spike<br>Level | Source<br>Result | %REC | %REC<br>Limits | RPD | RPD<br>Limit | Notes |
|---------|--------|--------------------|-------|----------------|------------------|------|----------------|-----|--------------|-------|
|---------|--------|--------------------|-------|----------------|------------------|------|----------------|-----|--------------|-------|

**Batch EH11902 - GC**

**Blank (EH11902-BLK1)**

Prepared & Analyzed: 19-Aug-11

|         |    |    |      |  |  |  |  |  |  |  |
|---------|----|----|------|--|--|--|--|--|--|--|
| Methane | ND | 10 | ppmv |  |  |  |  |  |  |  |
|---------|----|----|------|--|--|--|--|--|--|--|



2470 Impala Drive  
Carlsbad, CA 92010  
760-804-9678 Phone  
760-804-9159 Fax

Environ Corp.  
18100 Von Karman Ave, Suite 600  
Irvine, CA 92612

Project: ENV081711-W1  
Project Number: WO-2011-71  
Project Manager: Ms. Rebekah Wale

Reported:  
19-Aug-11 14:46

### Notes and Definitions

DET Analyte DETECTED  
ND Analyte NOT DETECTED at or above the reporting limit  
NR Not Reported  
dry Sample results reported on a dry weight basis  
RPD Relative Percent Difference

### Appendix

H&P Mobile Geochemistry, Inc. is approved as an Environmental Laboratory in conformance with the Environmental Laboratory Accreditation Program (CA) for the category of Volatile and Semi-Volatile Organic Chemistry of Hazardous Waste for the following methods:

Certificate# 2741, 2743, 2579, 2754 & 2740 approved for EPA 8260 and LUFT GC/MS  
Certificate# 2742, 2745, & 2741 approved for LUFT  
Certificate# 2745 & 2742 approved for EPA 418.1

H&P Mobile Geochemistry, Inc. is approved as an Environmental Laboratory in conformance with the National Environmental Accreditation Conference Standards for the category Environmental Analysis Air and Emissions for the following analytes and methods:

1,2,4-Trichlorobenzene by EPA TO-15 & TO-14A  
Hexachlorobutadiene by EPA TO-15 & TO-14A  
1,2,4-Trimethylbenzene by EPA TO-14A  
1,2-Dichlorobenzene by EPA TO-15 & TO-14A  
1,3,5-Trimethylbenzene by EPA TO-14A  
1,4-Dichlorobenzene by EPA TO-15 & TO-14A  
Benzene by EPA TO-15 & TO-14A  
Chlorobenzene by EPA TO-15 & TO-14A  
Ethyl benzene by EPA TO-15 & TO-14A  
Styrene by EPA TO-15 & TO-14A  
Toluene by EPA TO-15 & TO-14A  
Total Xylenes by EPA TO-15 & TO-14A  
1,1,1-Trichloroethane by EPA TO-15 & TO-14A  
1,1,2,2-Tetrachloroethane by EPA TO-15 & TO-14A  
1,1,2-Trichloroethane by EPA TO-15 & TO-14A  
1,1-Dichloroethane by EPA TO-15 & TO-14A  
1,1-Dichloroethene by EPA TO-15 & TO-14A  
1,2-Dichloroethane by EPA TO-15 & TO-14A  
1,2-Dichloropropane by EPA TO-15 & TO-14A  
Bromoform by EPA TO-15  
Bromomethane by EPA TO-15 & TO-14A  
Carbon tetrachloride by EPA TO-15 & TO-14A  
Chloroethane by EPA TO-15  
Chloroform by EPA TO-15 & TO-14A  
Chloromethane by EPA TO-15 & TO-14A  
cis-1,2-Dichloroethene by EPA TO-15  
cis-1,2-Dichloropropene by EPA TO-15 & TO-14A  
Methylene chloride by EPA TO-15 & TO-14A  
Tetrachloroethane by EPA TO-15 & TO-14A  
trans-1,2-Dichloroethene by EPA TO-15  
trans-1,2-Dichloropropene by EPA TO-15 & TO-14A  
Trichloroethene by EPA TO-15 & TO-14A  
Vinyl chloride by EPA TO-15 & TO-14A  
2-Butanone by EPA TO-15  
4-Methyl-2-Pentanone by EPA TO-15  
Hexane by EPA TO-15  
Methyl tert-butyl ether by EPA TO-15  
Vinyl acetate by EPA TO-15

This certification applies to samples analyzed in sunma canisters.

## Chain of Custody Record

2470 Impala Dr., Carlsbad, CA 92010 • ph 760.804.9678 • fax 760.804.9159  
 1855 Coronado Ave., Signal Hill, CA 90755 • ph 800.834.9888

Date: 8/19/11  
 H&P Project # ENV081711-W  
 Outside Lab: \_\_\_\_\_

Client: ENVIRON  
 Address: 18100 Van Korman Ave. Suite 600 Irvine, CA 92612  
 Email: rwaite@environcorp.com, kjohnson@environcorp.com  
 Collector: P. P. P. P.  
 Client Project # WO-2011-71  
 Location: 10000 Santa Monica Blvd, Los Angeles  
 Phone: 949-798-3693 Fax: \_\_\_\_\_  
 Turn around time: \_\_\_\_\_

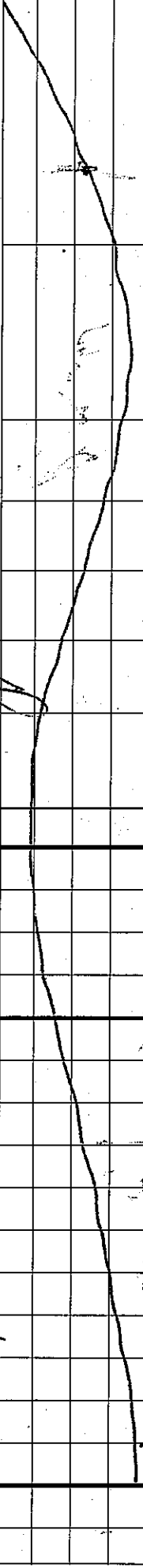
Geotracker EDF: Yes  No   
 Global ID: \_\_\_\_\_  
 Excel EDD: Yes  No   
 Special Instructions: \_\_\_\_\_

Sample Receipt  
 Inhibit:  Yes  No  
 Seal Inhibit:  Yes  No  N/A  
 Cold:  Yes  No  N/A  
 Temperature: \_\_\_\_\_

Lab Work Order # E108107 / EH11902

| Sample Name | Field Point Name | Purge Vol | Time | Date | Sample Type | Container Type |
|-------------|------------------|-----------|------|------|-------------|----------------|
| SC-6-10'    |                  | 348       | 1344 | 8/11 | vapor       | syringe        |
| SC-6-20'    |                  | 378       | 1351 |      |             |                |
| SC-10-5'    |                  | 333       | 1356 |      |             |                |
| SC-10-10'   |                  | 348       | 1401 |      |             |                |
| SC-8-20'    |                  | 180       | 1431 |      |             |                |
| SC-10-20'   |                  | 180       | 1435 |      |             |                |

| SOIL/GW  | SOIL VAPOR/AIR ANALYSIS  |
|--|--|
| 8260B Full List  | VOC's: Full List <input type="checkbox"/> 8260B <input type="checkbox"/> TO-15   |
| 8260B <input type="checkbox"/> BTEX/OXY <input type="checkbox"/> TPH gas                     | VOC's: Short List/DTSC <input type="checkbox"/> 8260B <input type="checkbox"/> TO-15                                   |
| 8015M TPH <input type="checkbox"/> g <input type="checkbox"/> d <input type="checkbox"/> ext | VOC's: SAM, 8260B <input type="checkbox"/> SAM A <input type="checkbox"/> SAM B  |
| 418.1 TRPH   | Naphthalene <input type="checkbox"/> 8260B <input type="checkbox"/> TO-15  |
|  | Oxygenates <input type="checkbox"/> 8260B <input type="checkbox"/> TO-15   |
|  | TPHv gas <input type="checkbox"/> 8260B <input type="checkbox"/> TO-15   |
|  | Ketones <input type="checkbox"/> 8260B <input type="checkbox"/> TO-15  |
|  | Other <input type="checkbox"/> 8260B <input type="checkbox"/> TO-15  |
|  | Leak Check Compound <input type="checkbox"/> 1,1 DFA <input type="checkbox"/> OTHER                                    |
|  | Methane  |
|  | Fixed Gases <input type="checkbox"/> CO2 <input checked="" type="checkbox"/> O2 <input checked="" type="checkbox"/> N2 |



Relinquished by: (Signature) [Signature] (Company) [Company]  
 Received by: (Signature) [Signature] (Company) [Company]  
 Date: 8/19/11 Time: 14:40

Signature constitutes authorization to proceed with analysis and acceptance of condition on back.  
 Sample disposal instruction:  Disposal  Return to client  Pickup  
 Date: \_\_\_\_\_ Time: \_\_\_\_\_





Mobile  
Geochemistry  
Inc.

2470 Impala Dr., Carlsbad, CA 92010 • ph 760.804.9678 • fax 760.804.9159  
 1855 Coronado Ave., Signal Hill, CA 90755 • ph 800.834.9888

### Chain of Custody Record

Date: 8/19/11

H&P Project # ENV081711-V1

Outside Lab: \_\_\_\_\_

Client: ENVIRON

Collector: Dehshin

Client Project # WO-78011-71

Project Contact: Rebekah Wale

Page: 1 of 2

Address: 18160 Van Karmen Ave, Suite 600 Irvine, CA 92618

Location: 10000 Santa Monica Blvd, Los Angeles

Turn around time: \_\_\_\_\_

Email: wa@environmental.com, kjohnson@environmental.com

Phone: 949-498-3693

Fax: \_\_\_\_\_

Geotracker EDD: Yes  No   
Global ID: \_\_\_\_\_  
Excel EDD: Yes  No

Sample Receipt  
Inlet:  Yes  No  
Seal Inlet:  Yes  No  N/A  
Cold:  Yes  No  N/A  
Temperature: \_\_\_\_\_

Special Instructions:

Lab Work Order # E108107/EH11902

| Sample Name | Field Point Name | Purge Vol | Time | Date | Sample Type | Container Type | Total # of containers |
|-------------|------------------|-----------|------|------|-------------|----------------|-----------------------|
|-------------|------------------|-----------|------|------|-------------|----------------|-----------------------|

|            |  |     |      |         |       |         |   |
|------------|--|-----|------|---------|-------|---------|---|
| SG-8-5     |  | 333 | 1301 | 8/19/11 | Vapor | Syringe | 1 |
| SG-8-10    |  | 348 | 1304 |         |       |         | 1 |
| SG-4-5     |  | 333 | 1310 |         |       |         | 1 |
| SG-4-10    |  | 348 | 1318 |         |       |         | 1 |
| SG-A-20    |  | 378 | 1322 |         |       |         | 1 |
| SG-5-5     |  | 333 | 1326 |         |       |         | 1 |
| SG-5-10    |  | 348 | 1330 |         |       |         | 1 |
| SG-5-80'   |  | 378 | 1334 |         |       |         | 1 |
| SG-6-5     |  | 333 | 1338 |         |       |         | 1 |
| SG-6-5-dup |  | 393 | 1339 |         |       |         | 1 |

| SOIL/GW         |  | SOIL VAPOR/AIR ANALYSIS |  |
|-----------------|--|-------------------------|--|
| 8260B Full List | <input type="checkbox"/> BTEX/OXY <input type="checkbox"/> TPH gas                 | VOC's: Full List        | <input type="checkbox"/> 8260B <input type="checkbox"/> TO-15                        |
| 8015M TPH       | <input type="checkbox"/> g <input type="checkbox"/> d <input type="checkbox"/> ext | VOC's: Short List/DTSC  | <input type="checkbox"/> 8260B <input type="checkbox"/> TO-15                        |
| 418.1 TRPH      |  | VOC's: SAM, 8260B       | <input type="checkbox"/> SAM A <input type="checkbox"/> SAM B                        |
|                 |  | Naphthalene             | <input type="checkbox"/> 8260B <input type="checkbox"/> TO-15                        |
|                 |  | Oxygenates              | <input type="checkbox"/> 8260B <input type="checkbox"/> TO-15                        |
|                 |  | TPHv gas                | <input type="checkbox"/> 8260B <input type="checkbox"/> TO-15                        |
|                 |  | Ketones                 | <input type="checkbox"/> 8260B <input type="checkbox"/> TO-15                        |
|                 |  | Other _____             | <input type="checkbox"/> 8260B <input type="checkbox"/> TO-15                        |
|                 |  | Leak Check Compound     | <input type="checkbox"/> 1,1 DFA <input type="checkbox"/> OTHER                      |
|                 |  | Methane                 |  |
|                 |  | Fixed Gases             | <input type="checkbox"/> CO2 <input type="checkbox"/> O2 <input type="checkbox"/> N2 |

Relinquished by: (Signature) Pat Brown (company) ENVIRON Date: 8/19/11 Time: 14:40

Received by: (Signature) \_\_\_\_\_ (company) \_\_\_\_\_ Date: \_\_\_\_\_ Time: \_\_\_\_\_

Relinquished by: (Signature) \_\_\_\_\_ (company) \_\_\_\_\_ Date: \_\_\_\_\_ Time: \_\_\_\_\_

Signature constitutes authorization to proceed with analysis and acceptance of condition on back. Sample disposal instruction:  Disposal  Return to client  Pickup

August 23, 2011

**Via Electronic Mail**

Ms. Sharon Christenbury, Esq.  
SM 10000 Property, LLC  
2200 Biscayne Boulevard  
Miami, Florida 33137

**Re: Report of Methane Gas Assessment  
10000 Santa Monica Boulevard, Los Angeles, California**

Dear Sharon:

ENVIRON International Corporation (ENVIRON) is pleased to submit this report to SM 10000 Property, LLC (the "Client") regarding the results of the methane assessment conducted recently at the property located at 10000 Santa Monica Boulevard, Los Angeles, California (the "site"). In accordance with Division 71 of the Los Angeles Municipal Building Code, all new buildings and paved areas located in the Methane Zone shall test for methane per the three step protocol described in Bulletin No. P/BC2002-101 (Reference No. 91.7104.1 – the "Bulletin"). The testing results are used to evaluate whether design of a methane mitigation system is necessary and if necessary, the appropriate level of design. This report presents the results of the methane investigation as required by the Bulletin.

**Background**

The approximately 2.2-acre site is located at the intersection of Santa Monica Boulevard and Moreno Drive and consists of vacant land; no structures are currently present at the site other than a small mobile guard shack at the western portion of the site. No dirt or paved roads are present; some demolition debris, small plants, and shrubs cover the majority of the site. The site is located in an area designated by the City of Los Angeles and the State of California Department of Conservation Division of Oil, Gas, & Geothermal Resources (DOGGR) as a Methane Zone.

**Objectives**

The objective of the methane soil gas investigation was to evaluate the potential presence of methane in the subsurface at the site.

**Scope of Work**

The scope of work included (1) pre-field activities and mobilization; (2) methane investigation; and, (3) preparation of this report. All drilling and sampling activities were supervised by ENVIRON field personnel working under the supervision of a California Registered Professional Geologist. Field work was conducted on August 17, 18, and 19, 2011.

**Task 1: Pre Field Activities and Mobilization**

Prior to initiation of drilling activities, ENVIRON contacted Underground Service Alert (USA) to mark the locations of all major utilities near the proposed boring locations. In addition to the services provided by USA, ENVIRON contracted with a private utility locating company to conduct a geophysical survey in the immediate vicinity of each proposed boring location to

identify subsurface structures or underground obstructions. The survey by the private utility locating company was conducted on the same day that Task 2 was implemented.

ENVIRON also prepared a Site-specific Health and Safety Plan (HASP). The HASP is designed to minimize exposure of ENVIRON's field personnel to potentially hazardous materials. All field personnel involved in the project were required to implement the procedures presented in the HASP while conducting the field work.

### **Task 2: Methane Investigation**

On August 17, 2011, ENVIRON retained a direct-push drilling contractor to conduct a shallow soil gas test as defined in the Bulletin. One soil gas sample was collected per approximately 10,000 square feet of site area at a depth of 4 feet below ground surface (bgs). In total, 10 temporary soil gas probes were installed (Borings SG-1 through SG-10; see Figure 1) across the site for collection of soil gas samples. ENVIRON retained H&P Mobile Geochemistry Inc. (H&P), a City of Los Angeles Department of Building and Safety (LADBS)-certified testing agency, to assist with probe installation and sample collection and analysis. Soil gas samples were collected in syringes and analyzed in an on-site mobile laboratory for methane in accordance with EPA Method 8015 Modified. Pressure measurements were recorded at each of the sampling points using calibrated pressure gauges.

The second step of the methane gas investigation included the installation of five gas probe sets (one per approximately 20,000 square feet) near where the highest concentration of methane was found based on the data from the shallow soil gas test. Each gas probe set consisted of three multi-depth probes, installed at approximate sampling depths of 5 feet, 10 feet, and 20 feet bgs. The probes were installed on August 17, 2011, by H&P and according to the specifications described on page 8 of the Bulletin.

On August 18, 2011, a minimum of 24 hours after the five gas probe sets were installed, each probe at each depth was sampled; methane gas concentrations and pressure measurements at each probe were measured using the same equipment used for the shallow soil gas test. Barometric pressure was recorded at the start of each sample collection. Samples were collected in syringes and analyzed in an on-site mobile laboratory for methane in accordance with EPA Method 8015 Modified.

On August 19, 2011, a second round of methane sampling of the soil gas probe sets occurred; procedures were followed as described for the August 18 sampling event.

After the collection of the soil gas samples, the borings were backfilled with bentonite slurry and completed to match the existing surface grade.

## **Findings**

### **Shallow Soil Gas Test**

- Methane was detected above the laboratory reporting limit (RL) of 10 parts per million by volume (ppmv) in samples at four locations, with a maximum concentration of 39 ppmv at Boring SG-10.
- Barometric pressure decreased slightly during the sample period, from 1014.5 millibars (mb) to 1014.2 mb.
- Based on the shallow soil gas test results, soil gas probe sets were installed near probes where methane was reported (SG-4, SG-5, SG-8, and SG-10). In addition, a fifth soil gas probe set was installed near SG-6 due to its central location at the site.

**Gas Probe Set Test**

Five feet bgs probes:

- On August 18, 2011, methane was detected above the RL in samples at three locations with a maximum concentration of 57 ppmv at Boring SG-10.
- On August 19, 2011, methane was detected above the RL in samples at one location with a concentration of 24 ppmv at Boring SG-10.

Ten feet bgs probes:

- On August 18, 2011, methane was detected above the RL in samples at three locations with a maximum concentration of 120 ppmv at Boring SG-5.
- On August 19, 2011, methane was detected above the RL in samples at three locations with a maximum concentration of 57 ppmv at Boring SG-5.

Twenty feet bgs probes:

- On August 18, 2011, methane was detected above the RL in samples at two locations with a maximum concentration of 94 ppmv at Boring SG-6.
- On August 19, 2011, methane was detected above the RL in samples at two locations with a maximum concentration of 74 ppmv at Boring SG-6.

On August 18, 2011, barometric pressure decreased slightly during the sample period, from 1012.4 mb to 1011.8 mb. On August 19, 2011, barometric pressure again decreased slightly during the sample period, from 1012.0 mb to 1011.3 mb. At no time during sample collection was increasing barometric pressure from a pre-frontal weather condition observed.

A summary of the analytical results for methane in the soil gas samples is presented in Table 1, and complete analytical laboratory reports are included as Attachment A.

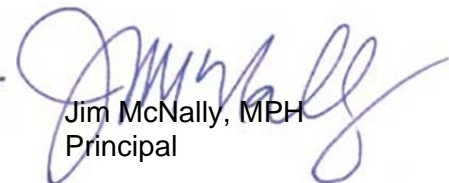
**Closure**

ENVIRON appreciates the opportunity to continue to assist SM 10000 Property, LLC on this project. If you have any questions regarding this report, please contact Jim McNally at 213.943.6336 or Rebekah Wale at 949.798.3693.

Very truly yours,

  
Kaleena Johnson  
Associate

  
Rebekah J. Wale  
Senior Manager

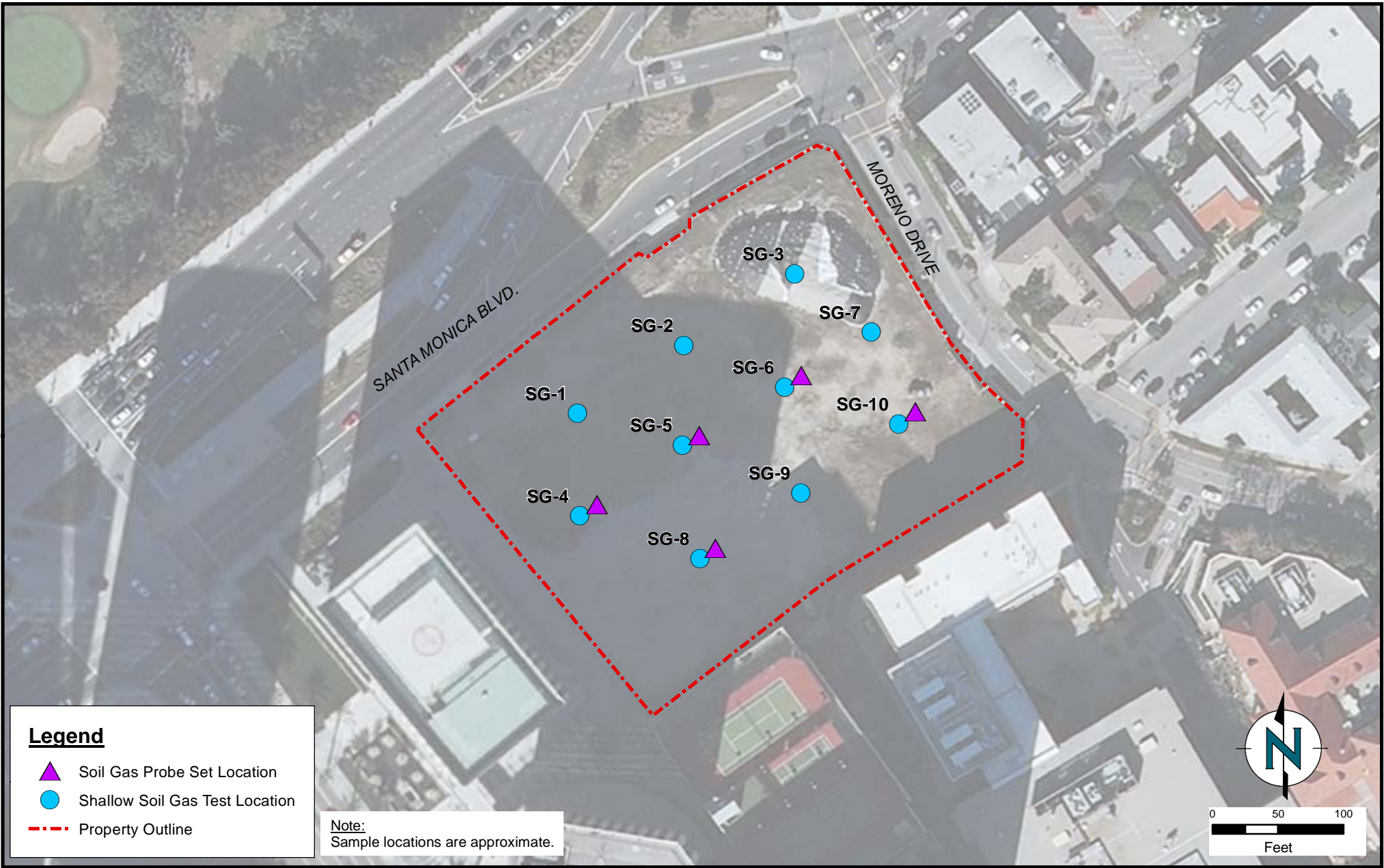
  
Jim McNally, MPH  
Principal

KJ:gw




Q:\Crescent Heights\0524416B1 CH SM 10000Prop Methane Gas Invest\Final\10000 SM Methane Survey Results.docx

Enclosures

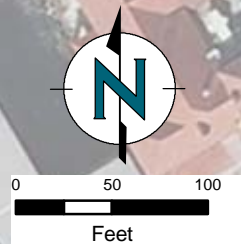
**Figure**



**Legend**

-  Soil Gas Probe Set Location
-  Shallow Soil Gas Test Location
-  Property Outline

Note:  
Sample locations are approximate.



## Table

**Table 1: Methane Soil Gas Results**

10000 Santa Monica Blvd.

Los Angeles, California

| Location | Depth | Date Sampled   | Analyte (ppmv) |
|----------|-------|----------------|----------------|
|          |       |                | Methane        |
| SG-1     | 4     | 8/17/11        | < 10           |
| SG-2     | 4     | 8/17/11        | < 10           |
| SG-3     | 4     | 8/17/11        | < 10           |
| SG-4     | 4     | 8/17/11        | 27             |
|          | 5     | 8/18/11        | < 10           |
|          | 5     | 8/19/11        | < 10           |
|          | 10    | 8/18/11        | < 10           |
|          | 10    | 8/19/11        | < 10           |
|          | 20    | 8/18/11        | 60             |
|          | 20    | 8/19/11        | 49             |
| SG-5     | 4     | 8/17/11        | 10             |
|          | 4     | <i>8/17/11</i> | 12             |
|          | 5     | 8/18/11        | 34             |
|          | 5     | 8/19/11        | < 10           |
|          | 10    | 8/18/11        | 120            |
|          | 10    | 8/19/11        | 57             |
|          | 20    | 8/18/11        | < 10           |
|          | 20    | 8/19/11        | < 10           |
| SG-6     | 4     | 8/17/11        | < 10           |
|          | 5     | 8/18/11        | < 10           |
|          | 5     | 8/19/11        | < 10           |
|          | 5     | <i>8/19/11</i> | < 10           |
|          | 10    | 8/18/11        | < 10           |
|          | 10    | 8/19/11        | < 10           |
|          | 20    | 8/18/11        | 94             |
|          | 20    | 8/19/11        | 74             |
| SG-7     | 4     | 8/17/11        | < 10           |
| SG-8     | 4     | 8/17/11        | 20             |
|          | 5     | 8/18/11        | 23             |
|          | 5     | 8/19/11        | < 10           |
|          | 10    | 8/18/11        | 110            |
|          | 10    | 8/19/11        | 26             |
|          | 20    | 8/18/11        | < 10           |
|          | 20    | 8/19/11        | < 10           |
| SG-9     | 4     | 8/17/11        | < 10           |
| SG-10    | 4     | 8/17/11        | 39             |
|          | 5     | 8/18/11        | 57             |
|          | 5     | 8/19/11        | 24             |
|          | 10    | 8/18/11        | 12             |
|          | 10    | <i>8/18/11</i> | < 10           |
|          | 10    | 8/19/11        | 17             |
|          | 20    | 8/18/11        | < 10           |
|          | 20    | 8/19/11        | < 10           |

Notes:

ppmv = parts per million by volume

*Italics* = duplicate sample taken

Samples analyzed by EPA Method 8015M



**Attachment A**  
**Laboratory Analytical Reports**

17 August 2011

Ms. Rebekah Wale  
Environ Corp.  
18100 Von Karman Ave, Suite 600  
Irvine, CA 92612



H&P Project: ENV081711-W1  
Client Project: WO-2011-71

Dear Ms. Rebekah Wale:

Enclosed is the analytical report for the above referenced project. The data herein applies to samples as received by H&P Mobile Geochemistry, Inc. on 17-Aug-11 which were analyzed in accordance with the attached Chain of Custody record(s).

The results for all sample analyses and required QA/QC analyses are presented in the following sections and summarized in the documents:

- Sample Summary
- Case Narrative (if applicable)
- Sample Results
- Quality Control Summary
- Notes and Definitions / Appendix
- Chain of Custody

Unless otherwise noted, all analyses were performed and reviewed in compliance with our Quality Systems Manual and Standard Operating Procedures. This report shall not be reproduced, except in full, without the written approval of H&P Mobile Geochemistry, Inc.

We at H&P Mobile Geochemistry, Inc. sincerely appreciate the opportunity to provide analytical services to you on this project. If you have any questions or concerns regarding this analytical report, please contact me at your convenience at 760-804-9678.

Sincerely,

Janis Villarreal  
Laboratory Director

H&P Mobile Geochemistry, Inc. operates under CA Environmental Lab Accreditation Program Numbers 2579, 2740, 2741, 2742, 2743, 2745 and 2754. National Environmental Laboratory Accreditation Conference (NELAC) Standards Lab #11845



2470 Impala Drive  
Carlsbad, CA 92010  
760-804-9678 Phone  
760-804-9159 Fax

Environ Corp.  
18100 Von Karman Ave, Suite 600  
Irvine, CA 92612

Project: ENV081711-W1  
Project Number: WO-2011-71  
Project Manager: Ms. Rebekah Wale

Reported:  
17-Aug-11 12:29

**ANALYTICAL REPORT FOR SAMPLES**

| Sample ID         | Laboratory ID | Matrix | Date Sampled | Date Received |
|-------------------|---------------|--------|--------------|---------------|
| DRAFT: SG-9-4     | E108095-01    | Vapor  | 17-Aug-11    | 17-Aug-11     |
| DRAFT: SG-8-4     | E108095-02    | Vapor  | 17-Aug-11    | 17-Aug-11     |
| DRAFT: SG-10-4    | E108095-03    | Vapor  | 17-Aug-11    | 17-Aug-11     |
| DRAFT: SG-7-4     | E108095-04    | Vapor  | 17-Aug-11    | 17-Aug-11     |
| DRAFT: SG-6-4     | E108095-05    | Vapor  | 17-Aug-11    | 17-Aug-11     |
| DRAFT: SG-4-4     | E108095-06    | Vapor  | 17-Aug-11    | 17-Aug-11     |
| DRAFT: SG-1-4     | E108095-07    | Vapor  | 17-Aug-11    | 17-Aug-11     |
| DRAFT: SG-2-4     | E108095-08    | Vapor  | 17-Aug-11    | 17-Aug-11     |
| DRAFT: SG-3-4     | E108095-09    | Vapor  | 17-Aug-11    | 17-Aug-11     |
| DRAFT: SG-5-4     | E108095-10    | Vapor  | 17-Aug-11    | 17-Aug-11     |
| DRAFT: SG-5-4 Dup | E108095-11    | Vapor  | 17-Aug-11    | 17-Aug-11     |



2470 Impala Drive  
 Carlsbad, CA 92010  
 760-804-9678 Phone  
 760-804-9159 Fax

|  |  |                              |
|--|--|------------------------------|
| Environ Corp.<br>18100 Von Karman Ave, Suite 600<br>Irvine, CA 92612 | Project: ENV081711-W1<br>Project Number: WO-2011-71<br>Project Manager: Ms. Rebekah Wale | Reported:<br>17-Aug-11 12:29 |
|--|--|------------------------------|

**DRAFT: Soil Gas and Vapor Analysis**

**H&P Mobile Geochemistry, Inc.**

| Analyte   | Result | Reporting Limit | Units | Dilution Factor | Batch   | Prepared  | Analyzed  | Method    | Notes |
|---|--------|-----------------|-------|-----------------|---------|-----------|-----------|-----------|-------|
| <b>DRAFT: SG-9-4 (E108095-01) Vapor</b> <b>Sampled: 17-Aug-11</b> <b>Received: 17-Aug-11</b>  |        |                 |       |                 |         |           |           |           |       |
| Methane   | ND     | 10              | ppmv  | 1               | EH11705 | 17-Aug-11 | 17-Aug-11 | EPA 8015M |       |
| <b>DRAFT: SG-8-4 (E108095-02) Vapor</b> <b>Sampled: 17-Aug-11</b> <b>Received: 17-Aug-11</b>  |        |                 |       |                 |         |           |           |           |       |
| Methane   | 20     | 10              | ppmv  | 1               | EH11705 | 17-Aug-11 | 17-Aug-11 | EPA 8015M |       |
| <b>DRAFT: SG-10-4 (E108095-03) Vapor</b> <b>Sampled: 17-Aug-11</b> <b>Received: 17-Aug-11</b> |        |                 |       |                 |         |           |           |           |       |
| Methane   | 39     | 10              | ppmv  | 1               | EH11705 | 17-Aug-11 | 17-Aug-11 | EPA 8015M |       |
| <b>DRAFT: SG-7-4 (E108095-04) Vapor</b> <b>Sampled: 17-Aug-11</b> <b>Received: 17-Aug-11</b>  |        |                 |       |                 |         |           |           |           |       |
| Methane   | ND     | 10              | ppmv  | 1               | EH11705 | 17-Aug-11 | 17-Aug-11 | EPA 8015M |       |
| <b>DRAFT: SG-6-4 (E108095-05) Vapor</b> <b>Sampled: 17-Aug-11</b> <b>Received: 17-Aug-11</b>  |        |                 |       |                 |         |           |           |           |       |
| Methane   | ND     | 10              | ppmv  | 1               | EH11705 | 17-Aug-11 | 17-Aug-11 | EPA 8015M |       |
| <b>DRAFT: SG-4-4 (E108095-06) Vapor</b> <b>Sampled: 17-Aug-11</b> <b>Received: 17-Aug-11</b>  |        |                 |       |                 |         |           |           |           |       |
| Methane   | 27     | 10              | ppmv  | 1               | EH11705 | 17-Aug-11 | 17-Aug-11 | EPA 8015M |       |
| <b>DRAFT: SG-1-4 (E108095-07) Vapor</b> <b>Sampled: 17-Aug-11</b> <b>Received: 17-Aug-11</b>  |        |                 |       |                 |         |           |           |           |       |
| Methane   | ND     | 10              | ppmv  | 1               | EH11705 | 17-Aug-11 | 17-Aug-11 | EPA 8015M |       |
| <b>DRAFT: SG-2-4 (E108095-08) Vapor</b> <b>Sampled: 17-Aug-11</b> <b>Received: 17-Aug-11</b>  |        |                 |       |                 |         |           |           |           |       |
| Methane   | ND     | 10              | ppmv  | 1               | EH11705 | 17-Aug-11 | 17-Aug-11 | EPA 8015M |       |
| <b>DRAFT: SG-3-4 (E108095-09) Vapor</b> <b>Sampled: 17-Aug-11</b> <b>Received: 17-Aug-11</b>  |        |                 |       |                 |         |           |           |           |       |
| Methane   | ND     | 10              | ppmv  | 1               | EH11705 | 17-Aug-11 | 17-Aug-11 | EPA 8015M |       |



2470 Impala Drive  
Carlsbad, CA 92010  
760-804-9678 Phone  
760-804-9159 Fax

Environ Corp.  
18100 Von Karman Ave, Suite 600  
Irvine, CA 92612

Project: ENV081711-W1  
Project Number: WO-2011-71  
Project Manager: Ms. Rebekah Wale

Reported:  
17-Aug-11 12:29

**DRAFT: Soil Gas and Vapor Analysis**

**H&P Mobile Geochemistry, Inc.**

| Analyte  | Result | Reporting<br>Limit | Units | Dilution<br>Factor | Batch   | Prepared  | Analyzed  | Method    | Notes |
|--|--------|--------------------|-------|--------------------|---------|-----------|-----------|-----------|-------|
| <b>DRAFT: SG-5-4 (E108095-10) Vapor    Sampled: 17-Aug-11    Received: 17-Aug-11</b>     |        |                    |       |                    |         |           |           |           |       |
| Methane  | 10     | 10                 | ppmv  | 1                  | EH11705 | 17-Aug-11 | 17-Aug-11 | EPA 8015M |       |
| <b>DRAFT: SG-5-4 Dup (E108095-11) Vapor    Sampled: 17-Aug-11    Received: 17-Aug-11</b> |        |                    |       |                    |         |           |           |           |       |
| Methane  | 12     | 10                 | ppmv  | 1                  | EH11705 | 17-Aug-11 | 17-Aug-11 | EPA 8015M |       |



2470 Impala Drive  
Carlsbad, CA 92010  
760-804-9678 Phone  
760-804-9159 Fax

|  |  |                              |
|--|--|------------------------------|
| Environ Corp.<br>18100 Von Karman Ave, Suite 600<br>Irvine, CA 92612 | Project: ENV081711-W1<br>Project Number: WO-2011-71<br>Project Manager: Ms. Rebekah Wale | Reported:<br>17-Aug-11 12:29 |
|--|--|------------------------------|

**DRAFT: Soil Gas and Vapor Analysis - Quality Control**  
**H&P Mobile Geochemistry, Inc.**

| Analyte | Result | Reporting<br>Limit | Units | Spike<br>Level | Source<br>Result | %REC | %REC<br>Limits | RPD | RPD<br>Limit | Notes |
|---------|--------|--------------------|-------|----------------|------------------|------|----------------|-----|--------------|-------|
|---------|--------|--------------------|-------|----------------|------------------|------|----------------|-----|--------------|-------|

**Batch EH11705 - GC**

**Blank (EH11705-BLK1)**

Prepared & Analyzed: 17-Aug-11

|         |    |    |      |  |  |  |  |  |  |  |
|---------|----|----|------|--|--|--|--|--|--|--|
| Methane | ND | 10 | ppmv |  |  |  |  |  |  |  |
|---------|----|----|------|--|--|--|--|--|--|--|



2470 Impala Drive  
Carlsbad, CA 92010  
760-804-9678 Phone  
760-804-9159 Fax

Environ Corp.  
18100 Von Karman Ave, Suite 600  
Irvine, CA 92612

Project: ENV081711-W1  
Project Number: WO-2011-71  
Project Manager: Ms. Rebekah Wale

Reported:  
17-Aug-11 12:29

### Notes and Definitions

DET Analyte DETECTED  
ND Analyte NOT DETECTED at or above the reporting limit  
NR Not Reported  
dry Sample results reported on a dry weight basis  
RPD Relative Percent Difference

### Appendix

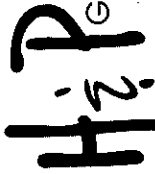
H&P Mobile Geochemistry, Inc. is approved as an Environmental Laboratory in conformance with the Environmental Laboratory Accreditation Program (CA) for the category of Volatile and Semi-Volatile Organic Chemistry of Hazardous Waste for the following methods:

Certificate# 2741, 2743, 2579, 2754 & 2740 approved for EPA 8260 and LUFT GC/MS  
Certificate# 2742, 2745, & 2741 approved for LUFT  
Certificate# 2745 & 2742 approved for EPA 418.1

H&P Mobile Geochemistry, Inc. is approved as an Environmental Laboratory in conformance with the National Environmental Accreditation Conference Standards for the category Environmental Analysis Air and Emissions for the following analytes and methods:

1,2,4-Trichlorobenzene by EPA TO-15 & TO-14A  
Hexachlorobutadiene by EPA TO-15 & TO-14A  
1,2,4-Trimethylbenzene by EPA TO-14A  
1,2-Dichlorobenzene by EPA TO-15 & TO-14A  
1,3,5-Trimethylbenzene by EPA TO-14A  
1,4-Dichlorobenzene by EPA TO-15 & TO-14A  
Benzene by EPA TO-15 & TO-14A  
Chlorobenzene by EPA TO-15 & TO-14A  
Ethyl benzene by EPA TO-15 & TO-14A  
Styrene by EPA TO-15 & TO-14A  
Toluene by EPA TO-15 & TO-14A  
Total Xylenes by EPA TO-15 & TO-14A  
1,1,1-Trichloroethane by EPA TO-15 & TO-14A  
1,1,2,2-Tetrachloroethane by EPA TO-15 & TO-14A  
1,1,2-Trichloroethane by EPA TO-15 & TO-14A  
1,1-Dichloroethane by EPA TO-15 & TO-14A  
1,1-Dichloroethene by EPA TO-15 & TO-14A  
1,2-Dichloroethane by EPA TO-15 & TO-14A  
1,2-Dichloropropane by EPA TO-15 & TO-14A  
Bromoform by EPA TO-15  
Bromomethane by EPA TO-15 & TO-14A  
Carbon tetrachloride by EPA TO-15 & TO-14A  
Chloroethane by EPA TO-15  
Chloroform by EPA TO-15 & TO-14A  
Chloromethane by EPA TO-15 & TO-14A  
cis-1,2-Dichloroethene by EPA TO-15  
cis-1,2-Dichloropropene by EPA TO-15 & TO-14A  
Methylene chloride by EPA TO-15 & TO-14A  
Tetrachloroethane by EPA TO-15 & TO-14A  
trans-1,2-Dichloroethene by EPA TO-15  
trans-1,2-Dichloropropene by EPA TO-15 & TO-14A  
Trichloroethene by EPA TO-15 & TO-14A  
Vinyl chloride by EPA TO-15 & TO-14A  
2-Butanone by EPA TO-15  
4-Methyl-2-Pentanone by EPA TO-15  
Hexane by EPA TO-15  
Methyl tert-butyl ether by EPA TO-15  
Vinyl acetate by EPA TO-15

This certification applies to samples analyzed in summa canisters.



Mobile  
Geochemistry  
Inc.

2470 Impala Dr., Carlsbad, CA 92010 • ph 760.804.9678 • fax 760.804.9159  
1855 Coronado Ave., Signal Hill, CA 90755 • ph 800.834.9888

# Chain of Custody Record

Date: 8/17/11

H&P Project # ENV081711-W1

Outside Lab:

Collector: Leonard Columbus

Page: 1 of 2

Client: Environ

Address: 18100 Von Karman Ave Suite 600

Irvine, CA 92612

Email: rwale@environcorp.com

Client Project # WO-2011-71

Location: 10,000 S. Santa Monica Blvd / Moreno Drive

Phone: 949-798-3693 Fax:

Project Contact: Rebekah Wale

Turn around time:

Geotracker EDF: Yes  No   
Global ID: \_\_\_\_\_  
Excel EDD: Yes  No   
Sample Receipt:  
Intact:  Yes  No   
Seal Intact:  Yes  No  N/A  
Cold:  Yes  No  N/A  
Temperature: \_\_\_\_\_

Special Instructions:

Lab Work Order # E108095/EH11705

|                 |       |       |            |   |  |  |   |  |  |   |   |   |         |  |
|-----------------|-------|-------|------------|---|--|--|---|--|--|---|---|---|---------|--|
| 8260B Full List | 8260B | 8260B | 418.1 TRPH | VOCs: Full List <input type="checkbox"/> 8260B <input type="checkbox"/> TO-15 | VOCs: Short List/DTC <input type="checkbox"/> 8260B <input type="checkbox"/> TO-15 | VOCs: SAM, 8260B <input type="checkbox"/> SAM A <input type="checkbox"/> SAM B | Naphthalene <input type="checkbox"/> 8260B <input type="checkbox"/> TO-15 | Oxyganes <input type="checkbox"/> 8260B <input type="checkbox"/> TO-15 | TPHv gas <input type="checkbox"/> 8260B <input type="checkbox"/> TO-15 | Ketones <input type="checkbox"/> 8260B <input type="checkbox"/> TO-15 | Other <input type="checkbox"/> 8260B <input type="checkbox"/> TO-15 | Leak Check Compound <input type="checkbox"/> 1,1 DPA <input type="checkbox"/> OTHER | Methane | Fixed Gases <input type="checkbox"/> CO2 <input type="checkbox"/> O2 <input type="checkbox"/> N2 |
|-----------------|-------|-------|------------|---|--|--|---|--|--|---|---|---|---------|--|

| Sample Name | Field Point Name | Purge Vol | Time  | Date | Sample Type | Container Type  | Total # of containers |
|-------------|------------------|-----------|-------|------|-------------|-----------------|-----------------------|
| SG-9-4'     |                  | 330       | 09:30 | 8/17 | Vapor       | Plastic Syringe | 1                     |
| SG-8-4'     |                  | 330       | 09:55 | 8/17 | Vapor       | Plastic Syringe | 1                     |
| SG-10-4'    |                  | 300       | 10:20 | 8/17 | Vapor       | Plastic Syringe | 1                     |
| SG-7-4'     |                  | 330       | 10:40 | 8/17 | Vapor       | Plastic Syringe | 1                     |
| SG-6-4'     |                  | 330       | 11:00 | 8/17 | Vapor       | Plastic Syringe | 1                     |
| SG-4-4'     |                  | 330       | 11:10 | 8/17 | Vapor       | Plastic Syringe | 1                     |
| SG-1-4'     |                  | 330       | 11:20 | 8/17 | Vapor       | Plastic Syringe | 1                     |
| SG-2-4'     |                  | 330       | 11:30 | 8/17 | Vapor       | Plastic Syringe | 1                     |
| SG-3-4'     |                  | 330       | 11:40 | 8/17 | Vapor       | Plastic Syringe | 1                     |
| SG-5-4'     |                  | 330       | 12:00 | 8/17 | Vapor       | Plastic Syringe | 1                     |

Relinquished by: (Signature) Karjoun (company) ENVIRON

Relinquished by: (Signature) \_\_\_\_\_ (company) \_\_\_\_\_

Relinquished by: (Signature) \_\_\_\_\_ (company) \_\_\_\_\_

Received by: (Signature) \_\_\_\_\_ (company) \_\_\_\_\_

Received by: (Signature) \_\_\_\_\_ (company) \_\_\_\_\_

Received by: (Signature) \_\_\_\_\_ (company) \_\_\_\_\_

Date: 8/17 Time: 12:20

Date: \_\_\_\_\_ Time: \_\_\_\_\_

Date: \_\_\_\_\_ Time: \_\_\_\_\_

\*Signature constitutes authorization to proceed with analysis and acceptance of condition on back.

Sample disposal instruction:  Disposal  Return to client  Pickup





Mobile  
Geochemistry  
Inc.

2470 Impala Dr., Carlsbad, CA 92010 • ph 760.804.9678 • fax 760.804.9159  
 1855 Coronado Ave., Signal Hill, CA 90755 • ph 800.834.9888

# Chain of Custody Record

Date: 8/17/11

H&P Project # ENV081711-W1

Outside Lab:

Collector: Leonard Calumbus

Page: 2 of 2

Client: Environ

Project Contact: Rebekah Wake

Address: 18100 Van Karman Ave Suite 600

Client Project # NO-2011-71

Location: 10000 S Santa Monica Blvd/Moreno Dr

City: Irvine, CA 92612

Phone: 949.798.3693

Turn around time:

**Sample Receipt**  
Intact:  Yes  No  
Seal Intact:  Yes  No  N/A  
Cold:  Yes  No  N/A  
Temperature:

Geotracker EDF: Yes  No   
Global ID:  
Excel EDD: Yes  No

Special Instructions:

Lab Work Order # E108095/EH11705

Total # of containers 1

| Sample Name  | Field Point Name | Purge Vol | Time  | Date | Sample Type   | Container Type |
|--|------------------|-----------|-------|------|---------------|----------------|
| SG-5-1 Dup   |                  | 330       | 12:10 | 8/17 | Vapor Springs | Plastic        |
| <b>SOIL VAPOR/AIR ANALYSIS</b>   |                  |           |       |      |               |                |
| 8260B Full List  |                  |           |       |      |               |                |
| 8260B <input type="checkbox"/> BTEX/OXY <input type="checkbox"/> TPH gas                         |                  |           |       |      |               |                |
| 8015M TPH <input type="checkbox"/> g <input type="checkbox"/> d <input type="checkbox"/> ex      |                  |           |       |      |               |                |
| 418.1 TRPH   |                  |           |       |      |               |                |
| VOC's: Full List <input type="checkbox"/> 8260B <input type="checkbox"/> TO-15                   |                  |           |       |      |               |                |
| VOC's: Short List/DTSC <input type="checkbox"/> 8260B <input type="checkbox"/> TO-15             |                  |           |       |      |               |                |
| VOC's: SAM, 8260B <input type="checkbox"/> SAM A <input type="checkbox"/> SAM B                  |                  |           |       |      |               |                |
| Naphthalene <input type="checkbox"/> 8260B <input type="checkbox"/> TO-15                        |                  |           |       |      |               |                |
| Oxyganes <input type="checkbox"/> 8260B <input type="checkbox"/> TO-15                           |                  |           |       |      |               |                |
| TPHv gas <input type="checkbox"/> 8260B <input type="checkbox"/> TO-15                           |                  |           |       |      |               |                |
| Ketones <input type="checkbox"/> 8260B <input type="checkbox"/> TO-15                            |                  |           |       |      |               |                |
| Other <input type="checkbox"/> 8260B <input type="checkbox"/> TO-15                              |                  |           |       |      |               |                |
| Leak Check Compound <input type="checkbox"/> 1,1 DFA <input type="checkbox"/> OTHER              |                  |           |       |      |               |                |
| Methane <input type="checkbox"/> N2  |                  |           |       |      |               |                |
| Fixed Gases <input type="checkbox"/> CO2 <input type="checkbox"/> O2 <input type="checkbox"/> N2 |                  |           |       |      |               |                |

Relinquished by: (Signature) *Kal Johnson* (company) **ENVIRO**  
 Relinquished by: (Signature) *[Signature]* (company)  
 Relinquished by: (Signature) *[Signature]* (company)

Date: 8/17  
Time: 12:20

\*Signature constitutes authorization to proceed with analysis and acceptance of condition on back.

Sample disposal instruction:  Disposal  Return to client  Pickup

18 August 2011



Ms. Rebekah Wale  
Environ Corp.  
18100 Von Karman Ave, Suite 600  
Irvine, CA 92612

H&P Project: ENV081711-W1  
Client Project: WO-2011-71

Dear Ms. Rebekah Wale:

Enclosed is the analytical report for the above referenced project. The data herein applies to samples as received by H&P Mobile Geochemistry, Inc. on 18-Aug-11 which were analyzed in accordance with the attached Chain of Custody record(s).

The results for all sample analyses and required QA/QC analyses are presented in the following sections and summarized in the documents:

- Sample Summary
- Case Narrative (if applicable)
- Sample Results
- Quality Control Summary
- Notes and Definitions / Appendix
- Chain of Custody

Unless otherwise noted, all analyses were performed and reviewed in compliance with our Quality Systems Manual and Standard Operating Procedures. This report shall not be reproduced, except in full, without the written approval of H&P Mobile Geochemistry, Inc.

We at H&P Mobile Geochemistry, Inc. sincerely appreciate the opportunity to provide analytical services to you on this project. If you have any questions or concerns regarding this analytical report, please contact me at your convenience at 760-804-9678.

Sincerely,

Janis Villarreal  
Laboratory Director

H&P Mobile Geochemistry, Inc. operates under CA Environmental Lab Accreditation Program Numbers 2579, 2740, 2741, 2742, 2743, 2745 and 2754. National Environmental Laboratory Accreditation Conference (NELAC) Standards Lab #11845



2470 Impala Drive  
Carlsbad, CA 92010  
760-804-9678 Phone  
760-804-9159 Fax

Environ Corp.  
18100 Von Karman Ave, Suite 600  
Irvine, CA 92612

Project: ENV081711-W1  
Project Number: WO-2011-71  
Project Manager: Ms. Rebekah Wale

Reported:  
18-Aug-11 15:02

**ANALYTICAL REPORT FOR SAMPLES**

| Sample ID            | Laboratory ID | Matrix | Date Sampled | Date Received |
|----------------------|---------------|--------|--------------|---------------|
| DRAFT: SG-8-5'       | E108103-01    | Vapor  | 18-Aug-11    | 18-Aug-11     |
| DRAFT: SG-8-10'      | E108103-02    | Vapor  | 18-Aug-11    | 18-Aug-11     |
| DRAFT: SG-8-20'      | E108103-03    | Vapor  | 18-Aug-11    | 18-Aug-11     |
| DRAFT: SG-4-5'       | E108103-04    | Vapor  | 18-Aug-11    | 18-Aug-11     |
| DRAFT: SG-4-10'      | E108103-05    | Vapor  | 18-Aug-11    | 18-Aug-11     |
| DRAFT: SG-4-20'      | E108103-06    | Vapor  | 18-Aug-11    | 18-Aug-11     |
| DRAFT: SG-5-5'       | E108103-07    | Vapor  | 18-Aug-11    | 18-Aug-11     |
| DRAFT: SG-5-10'      | E108103-08    | Vapor  | 18-Aug-11    | 18-Aug-11     |
| DRAFT: SG-6-5'       | E108103-09    | Vapor  | 18-Aug-11    | 18-Aug-11     |
| DRAFT: SG-6-10'      | E108103-10    | Vapor  | 18-Aug-11    | 18-Aug-11     |
| DRAFT: SG-6-20'      | E108103-11    | Vapor  | 18-Aug-11    | 18-Aug-11     |
| DRAFT: SG-10-5'      | E108103-12    | Vapor  | 18-Aug-11    | 18-Aug-11     |
| DRAFT: SG-10-10'     | E108103-13    | Vapor  | 18-Aug-11    | 18-Aug-11     |
| DRAFT: SG-10-10' Dup | E108103-14    | Vapor  | 18-Aug-11    | 18-Aug-11     |
| DRAFT: SG-5-20'      | E108103-15    | Vapor  | 18-Aug-11    | 18-Aug-11     |
| DRAFT: SG-10-20'     | E108103-16    | Vapor  | 18-Aug-11    | 18-Aug-11     |



2470 Impala Drive  
 Carlsbad, CA 92010  
 760-804-9678 Phone  
 760-804-9159 Fax

Environ Corp.  
 18100 Von Karman Ave, Suite 600  
 Irvine, CA 92612

Project: ENV081711-W1  
 Project Number: WO-2011-71  
 Project Manager: Ms. Rebekah Wale

Reported:  
 18-Aug-11 15:02

**DRAFT: Soil Gas and Vapor Analysis**

**H&P Mobile Geochemistry, Inc.**

| Analyte  | Result | Reporting Limit | Units | Dilution Factor | Batch   | Prepared  | Analyzed  | Method    | Notes |
|--|--------|-----------------|-------|-----------------|---------|-----------|-----------|-----------|-------|
| <b>DRAFT: SG-8-5' (E108103-01) Vapor</b> <b>Sampled: 18-Aug-11</b> <b>Received: 18-Aug-11</b>  |        |                 |       |                 |         |           |           |           |       |
| Methane  | 23     | 10              | ppmv  | 1               | EH11803 | 18-Aug-11 | 18-Aug-11 | EPA 8015M |       |
| <b>DRAFT: SG-8-10' (E108103-02) Vapor</b> <b>Sampled: 18-Aug-11</b> <b>Received: 18-Aug-11</b> |        |                 |       |                 |         |           |           |           |       |
| Methane  | 110    | 10              | ppmv  | 1               | EH11803 | 18-Aug-11 | 18-Aug-11 | EPA 8015M |       |
| <b>DRAFT: SG-8-20' (E108103-03) Vapor</b> <b>Sampled: 18-Aug-11</b> <b>Received: 18-Aug-11</b> |        |                 |       |                 |         |           |           |           |       |
| Methane  | ND     | 10              | ppmv  | 1               | EH11803 | 18-Aug-11 | 18-Aug-11 | EPA 8015M |       |
| <b>DRAFT: SG-4-5' (E108103-04) Vapor</b> <b>Sampled: 18-Aug-11</b> <b>Received: 18-Aug-11</b>  |        |                 |       |                 |         |           |           |           |       |
| Methane  | ND     | 10              | ppmv  | 1               | EH11803 | 18-Aug-11 | 18-Aug-11 | EPA 8015M |       |
| <b>DRAFT: SG-4-10' (E108103-05) Vapor</b> <b>Sampled: 18-Aug-11</b> <b>Received: 18-Aug-11</b> |        |                 |       |                 |         |           |           |           |       |
| Methane  | ND     | 10              | ppmv  | 1               | EH11803 | 18-Aug-11 | 18-Aug-11 | EPA 8015M |       |
| <b>DRAFT: SG-4-20' (E108103-06) Vapor</b> <b>Sampled: 18-Aug-11</b> <b>Received: 18-Aug-11</b> |        |                 |       |                 |         |           |           |           |       |
| Methane  | 60     | 10              | ppmv  | 1               | EH11803 | 18-Aug-11 | 18-Aug-11 | EPA 8015M |       |
| <b>DRAFT: SG-5-5' (E108103-07) Vapor</b> <b>Sampled: 18-Aug-11</b> <b>Received: 18-Aug-11</b>  |        |                 |       |                 |         |           |           |           |       |
| Methane  | 34     | 10              | ppmv  | 1               | EH11803 | 18-Aug-11 | 18-Aug-11 | EPA 8015M |       |
| <b>DRAFT: SG-5-10' (E108103-08) Vapor</b> <b>Sampled: 18-Aug-11</b> <b>Received: 18-Aug-11</b> |        |                 |       |                 |         |           |           |           |       |
| Methane  | 120    | 10              | ppmv  | 1               | EH11803 | 18-Aug-11 | 18-Aug-11 | EPA 8015M |       |
| <b>DRAFT: SG-6-5' (E108103-09) Vapor</b> <b>Sampled: 18-Aug-11</b> <b>Received: 18-Aug-11</b>  |        |                 |       |                 |         |           |           |           |       |
| Methane  | ND     | 10              | ppmv  | 1               | EH11803 | 18-Aug-11 | 18-Aug-11 | EPA 8015M |       |



2470 Impala Drive  
Carlsbad, CA 92010  
760-804-9678 Phone  
760-804-9159 Fax

Environ Corp.  
18100 Von Karman Ave, Suite 600  
Irvine, CA 92612

Project: ENV081711-W1  
Project Number: WO-2011-71  
Project Manager: Ms. Rebekah Wale

Reported:  
18-Aug-11 15:02

**DRAFT: Soil Gas and Vapor Analysis**

**H&P Mobile Geochemistry, Inc.**

| Analyte   | Result | Reporting Limit | Units | Dilution Factor | Batch   | Prepared  | Analyzed  | Method    | Notes |
|---|--------|-----------------|-------|-----------------|---------|-----------|-----------|-----------|-------|
| <b>DRAFT: SG-6-10' (E108103-10) Vapor</b> <b>Sampled: 18-Aug-11</b> <b>Received: 18-Aug-11</b>      |        |                 |       |                 |         |           |           |           |       |
| Methane   | ND     | 10              | ppmv  | 1               | EH11803 | 18-Aug-11 | 18-Aug-11 | EPA 8015M |       |
| <b>DRAFT: SG-6-20' (E108103-11) Vapor</b> <b>Sampled: 18-Aug-11</b> <b>Received: 18-Aug-11</b>      |        |                 |       |                 |         |           |           |           |       |
| Methane   | 94     | 10              | ppmv  | 1               | EH11803 | 18-Aug-11 | 18-Aug-11 | EPA 8015M |       |
| <b>DRAFT: SG-10-5' (E108103-12) Vapor</b> <b>Sampled: 18-Aug-11</b> <b>Received: 18-Aug-11</b>      |        |                 |       |                 |         |           |           |           |       |
| Methane   | 57     | 10              | ppmv  | 1               | EH11803 | 18-Aug-11 | 18-Aug-11 | EPA 8015M |       |
| <b>DRAFT: SG-10-10' (E108103-13) Vapor</b> <b>Sampled: 18-Aug-11</b> <b>Received: 18-Aug-11</b>     |        |                 |       |                 |         |           |           |           |       |
| Methane   | 12     | 10              | ppmv  | 1               | EH11803 | 18-Aug-11 | 18-Aug-11 | EPA 8015M |       |
| <b>DRAFT: SG-10-10' Dup (E108103-14) Vapor</b> <b>Sampled: 18-Aug-11</b> <b>Received: 18-Aug-11</b> |        |                 |       |                 |         |           |           |           |       |
| Methane   | ND     | 10              | ppmv  | 1               | EH11803 | 18-Aug-11 | 18-Aug-11 | EPA 8015M |       |
| <b>DRAFT: SG-5-20' (E108103-15) Vapor</b> <b>Sampled: 18-Aug-11</b> <b>Received: 18-Aug-11</b>      |        |                 |       |                 |         |           |           |           |       |
| Methane   | ND     | 10              | ppmv  | 1               | EH11803 | 18-Aug-11 | 18-Aug-11 | EPA 8015M |       |
| <b>DRAFT: SG-10-20' (E108103-16) Vapor</b> <b>Sampled: 18-Aug-11</b> <b>Received: 18-Aug-11</b>     |        |                 |       |                 |         |           |           |           |       |
| Methane   | ND     | 10              | ppmv  | 1               | EH11803 | 18-Aug-11 | 18-Aug-11 | EPA 8015M |       |



2470 Impala Drive  
 Carlsbad, CA 92010  
 760-804-9678 Phone  
 760-804-9159 Fax

|  |  |                              |
|--|--|------------------------------|
| Environ Corp.<br>18100 Von Karman Ave, Suite 600<br>Irvine, CA 92612 | Project: ENV081711-W1<br>Project Number: WO-2011-71<br>Project Manager: Ms. Rebekah Wale | Reported:<br>18-Aug-11 15:02 |
|--|--|------------------------------|

**DRAFT: Soil Gas and Vapor Analysis - Quality Control**  
**H&P Mobile Geochemistry, Inc.**

| Analyte | Result | Reporting Limit | Units | Spike Level | Source Result | %REC | %REC Limits | RPD | RPD Limit | Notes |
|---------|--------|-----------------|-------|-------------|---------------|------|-------------|-----|-----------|-------|
|---------|--------|-----------------|-------|-------------|---------------|------|-------------|-----|-----------|-------|

**Batch EH11803 - GC**

**Blank (EH11803-BLK1)**

Prepared & Analyzed: 18-Aug-11

|         |    |    |      |  |  |  |  |  |  |  |
|---------|----|----|------|--|--|--|--|--|--|--|
| Methane | ND | 10 | ppmv |  |  |  |  |  |  |  |
|---------|----|----|------|--|--|--|--|--|--|--|



2470 Impala Drive  
Carlsbad, CA 92010  
760-804-9678 Phone  
760-804-9159 Fax

Environ Corp.  
18100 Von Karman Ave, Suite 600  
Irvine, CA 92612

Project: ENV081711-W1  
Project Number: WO-2011-71  
Project Manager: Ms. Rebekah Wale

Reported:  
18-Aug-11 15:02

### Notes and Definitions

DET Analyte DETECTED  
ND Analyte NOT DETECTED at or above the reporting limit  
NR Not Reported  
dry Sample results reported on a dry weight basis  
RPD Relative Percent Difference

### Appendix

H&P Mobile Geochemistry, Inc. is approved as an Environmental Laboratory in conformance with the Environmental Laboratory Accreditation Program (CA) for the category of Volatile and Semi-Volatile Organic Chemistry of Hazardous Waste for the following methods:

Certificate# 2741, 2743, 2579, 2754 & 2740 approved for EPA 8260 and LUFT GC/MS  
Certificate# 2742, 2745, & 2741 approved for LUFT  
Certificate# 2745 & 2742 approved for EPA 418.1

H&P Mobile Geochemistry, Inc. is approved as an Environmental Laboratory in conformance with the National Environmental Accreditation Conference Standards for the category Environmental Analysis Air and Emissions for the following analytes and methods:

1,2,4-Trichlorobenzene by EPA TO-15 & TO-14A  
Hexachlorobutadiene by EPA TO-15 & TO-14A  
1,2,4-Trimethylbenzene by EPA TO-14A  
1,2-Dichlorobenzene by EPA TO-15 & TO-14A  
1,3,5-Trimethylbenzene by EPA TO-14A  
1,4-Dichlorobenzene by EPA TO-15 & TO-14A  
Benzene by EPA TO-15 & TO-14A  
Chlorobenzene by EPA TO-15 & TO-14A  
Ethyl benzene by EPA TO-15 & TO-14A  
Styrene by EPA TO-15 & TO-14A  
Toluene by EPA TO-15 & TO-14A  
Total Xylenes by EPA TO-15 & TO-14A  
1,1,1-Trichloroethane by EPA TO-15 & TO-14A  
1,1,2,2-Tetrachloroethane by EPA TO-15 & TO-14A  
1,1,2-Trichloroethane by EPA TO-15 & TO-14A  
1,1-Dichloroethane by EPA TO-15 & TO-14A  
1,1-Dichloroethene by EPA TO-15 & TO-14A  
1,2-Dichloroethane by EPA TO-15 & TO-14A  
1,2-Dichloropropane by EPA TO-15 & TO-14A  
Bromoform by EPA TO-15  
Bromomethane by EPA TO-15 & TO-14A  
Carbon tetrachloride by EPA TO-15 & TO-14A  
Chloroethane by EPA TO-15  
Chloroform by EPA TO-15 & TO-14A  
Chloromethane by EPA TO-15 & TO-14A  
cis-1,2-Dichloroethene by EPA TO-15  
cis-1,2-Dichloropropene by EPA TO-15 & TO-14A  
Methylene chloride by EPA TO-15 & TO-14A  
Tetrachloroethane by EPA TO-15 & TO-14A  
trans-1,2-Dichloroethene by EPA TO-15  
trans-1,2-Dichloropropene by EPA TO-15 & TO-14A  
Trichloroethene by EPA TO-15 & TO-14A  
Vinyl chloride by EPA TO-15 & TO-14A  
2-Butanone by EPA TO-15  
4-Methyl-2-Pentanone by EPA TO-15  
Hexane by EPA TO-15  
Methyl tert-butyl ether by EPA TO-15  
Vinyl acetate by EPA TO-15

This certification applies to samples analyzed in summa canisters.





**Chain of Custody Record**

Date: 8/18/11  
 H&P Project # ENV081711-W/  
 Outside Lab: \_\_\_\_\_

Client: Environ Collector: D. Petyshin Page: 1 of 2  
 Address: 18100 Von Karman Ave Suite 600 Client Project # VO-2011-71  
Irvine, CA 92612 Location: 1000 S. Santa Monica Blvd/Mereno Drive  
 Email: rwale@environcorp.com Phone: 949-798-3693 Box: \_\_\_\_\_  
 Turn around time: \_\_\_\_\_

Geotracker EDF: Yes  No   
 Global ID: \_\_\_\_\_  
 Excel EDD: Yes  No   
 Sample Receipt:  
 Intact:  Yes  No   
 Seal Intact:  Yes  No  N/A  
 Cold:  Yes  No  N/A  
 Temperature: \_\_\_\_\_

Special Instructions: \_\_\_\_\_  
 Lab Work Order # E 108103 / E411803  
 Total # of containers \_\_\_\_\_

| Sample Name | Field Point Name | Purge Vol | Time | Date    | Sample Type | Container Type |
|-------------|------------------|-----------|------|---------|-------------|----------------|
| SG-8-5'     |                  | 333       | 1325 | 8/18/11 | Vapor       | Syringe        |
| SG-8-10'    |                  | 348       | 1330 |         |             |                |
| SG-8-20'    |                  | 120       | 1433 |         |             |                |
| SG-4-5'     |                  | 333       | 1339 |         |             |                |
| SG-4-10'    |                  | 348       | 1343 |         |             |                |
| SG-4-20'    |                  | 378       | 1348 |         |             |                |
| SG-5-5'     |                  | 330       | 1352 |         |             |                |
| SG-5-10'    |                  | 348       | 1356 |         |             |                |
| SG-6-5'     |                  | 333       | 1401 |         |             |                |
| SG-6-10'    |                  | 348       | 1406 |         |             |                |

Relinquished by: (Signature) \_\_\_\_\_ (company) \_\_\_\_\_  
 Relinquished by: (Signature) \_\_\_\_\_ (company) \_\_\_\_\_  
 Relinquished by: (Signature) \_\_\_\_\_ (company) \_\_\_\_\_

| SOIL/GW         |  | SOIL VAPOR/AIR ANALYSIS |                                |                                |                       |                                |                                |                  |                                |                                |             |                                |                                |             |                                |                                |          |                                |                                |         |                                |                                |       |                                |                                |                     |                                  |                                |         |             |                              |                             |                             |
|-----------------|--|-------------------------|--------------------------------|--------------------------------|-----------------------|--------------------------------|--------------------------------|------------------|--------------------------------|--------------------------------|-------------|--------------------------------|--------------------------------|-------------|--------------------------------|--------------------------------|----------|--------------------------------|--------------------------------|---------|--------------------------------|--------------------------------|-------|--------------------------------|--------------------------------|---------------------|----------------------------------|--------------------------------|---------|-------------|------------------------------|-----------------------------|-----------------------------|
| 8260B Full List |  | VOCs: Full List         | <input type="checkbox"/> 8260B | <input type="checkbox"/> TO-15 | VOCs: Short List/DTSC | <input type="checkbox"/> 8260B | <input type="checkbox"/> TO-15 | VOCs: SAM, 8260B | <input type="checkbox"/> SAM A | <input type="checkbox"/> SAM B | Naphthalene | <input type="checkbox"/> 8260B | <input type="checkbox"/> TO-15 | Oxygencates | <input type="checkbox"/> 8260B | <input type="checkbox"/> TO-15 | TPHv gas | <input type="checkbox"/> 8260B | <input type="checkbox"/> TO-15 | Ketones | <input type="checkbox"/> 8260B | <input type="checkbox"/> TO-15 | Other | <input type="checkbox"/> 8260B | <input type="checkbox"/> TO-15 | Leak Check Compound | <input type="checkbox"/> 1,1 DPA | <input type="checkbox"/> OTHER | Methane | Fixed Gases | <input type="checkbox"/> CO2 | <input type="checkbox"/> O2 | <input type="checkbox"/> N2 |

Signature constitutes authorization to proceed with analysis and acceptance of condition on back.  
 Sample disposal instruction:  Disposal  Return to client  Pickup

19 August 2011



Ms. Rebekah Wale  
Environ Corp.  
18100 Von Karman Ave, Suite 600  
Irvine, CA 92612

H&P Project: ENV081711-W1  
Client Project: WO-2011-71

Dear Ms. Rebekah Wale:

Enclosed is the analytical report for the above referenced project. The data herein applies to samples as received by H&P Mobile Geochemistry, Inc. on 19-Aug-11 which were analyzed in accordance with the attached Chain of Custody record(s).

The results for all sample analyses and required QA/QC analyses are presented in the following sections and summarized in the documents:

- Sample Summary
- Case Narrative (if applicable)
- Sample Results
- Quality Control Summary
- Notes and Definitions / Appendix
- Chain of Custody

Unless otherwise noted, all analyses were performed and reviewed in compliance with our Quality Systems Manual and Standard Operating Procedures. This report shall not be reproduced, except in full, without the written approval of H&P Mobile Geochemistry, Inc.

We at H&P Mobile Geochemistry, Inc. sincerely appreciate the opportunity to provide analytical services to you on this project. If you have any questions or concerns regarding this analytical report, please contact me at your convenience at 760-804-9678.

Sincerely,

Janis Villarreal  
Laboratory Director

H&P Mobile Geochemistry, Inc. operates under CA Environmental Lab Accreditation Program Numbers 2579, 2740, 2741, 2742, 2743, 2745 and 2754. National Environmental Laboratory Accreditation Conference (NELAC) Standards Lab #11845



2470 Impala Drive  
Carlsbad, CA 92010  
760-804-9678 Phone  
760-804-9159 Fax

Environ Corp.  
18100 Von Karman Ave, Suite 600  
Irvine, CA 92612

Project: ENV081711-W1  
Project Number: WO-2011-71  
Project Manager: Ms. Rebekah Wale

Reported:  
19-Aug-11 14:46

**ANALYTICAL REPORT FOR SAMPLES**

| Sample ID          | Laboratory ID | Matrix | Date Sampled | Date Received |
|--------------------|---------------|--------|--------------|---------------|
| DRAFT: SG-8-5'     | E108107-01    | Vapor  | 19-Aug-11    | 19-Aug-11     |
| DRAFT: SG-8-10'    | E108107-02    | Vapor  | 19-Aug-11    | 19-Aug-11     |
| DRAFT: SG-4-5'     | E108107-03    | Vapor  | 19-Aug-11    | 19-Aug-11     |
| DRAFT: SG-4-10'    | E108107-04    | Vapor  | 19-Aug-11    | 19-Aug-11     |
| DRAFT: SG-4-20'    | E108107-05    | Vapor  | 19-Aug-11    | 19-Aug-11     |
| DRAFT: SG-5-5'     | E108107-06    | Vapor  | 19-Aug-11    | 19-Aug-11     |
| DRAFT: SG-5-10'    | E108107-07    | Vapor  | 19-Aug-11    | 19-Aug-11     |
| DRAFT: SG-5-20'    | E108107-08    | Vapor  | 19-Aug-11    | 19-Aug-11     |
| DRAFT: SG-6-5'     | E108107-09    | Vapor  | 19-Aug-11    | 19-Aug-11     |
| DRAFT: SG-6-5' Dup | E108107-10    | Vapor  | 19-Aug-11    | 19-Aug-11     |
| DRAFT: SG-6-10'    | E108107-11    | Vapor  | 19-Aug-11    | 19-Aug-11     |
| DRAFT: SG-6-20'    | E108107-12    | Vapor  | 19-Aug-11    | 19-Aug-11     |
| DRAFT: SG-10-5'    | E108107-13    | Vapor  | 19-Aug-11    | 19-Aug-11     |
| DRAFT: SG-10-10'   | E108107-14    | Vapor  | 19-Aug-11    | 19-Aug-11     |
| DRAFT: SG-8-20'    | E108107-15    | Vapor  | 19-Aug-11    | 19-Aug-11     |
| DRAFT: SG-10-20'   | E108107-16    | Vapor  | 19-Aug-11    | 19-Aug-11     |



2470 Impala Drive  
 Carlsbad, CA 92010  
 760-804-9678 Phone  
 760-804-9159 Fax

|  |  |                              |
|--|--|------------------------------|
| Environ Corp.<br>18100 Von Karman Ave, Suite 600<br>Irvine, CA 92612 | Project: ENV081711-W1<br>Project Number: WO-2011-71<br>Project Manager: Ms. Rebekah Wale | Reported:<br>19-Aug-11 14:46 |
|--|--|------------------------------|

**DRAFT: Soil Gas and Vapor Analysis**

**H&P Mobile Geochemistry, Inc.**

| Analyte  | Result | Reporting Limit | Units | Dilution Factor | Batch   | Prepared  | Analyzed  | Method    | Notes |
|--|--------|-----------------|-------|-----------------|---------|-----------|-----------|-----------|-------|
| <b>DRAFT: SG-8-5' (E108107-01) Vapor Sampled: 19-Aug-11 Received: 19-Aug-11</b>  |        |                 |       |                 |         |           |           |           |       |
| Methane  | ND     | 10              | ppmv  | 1               | EH11902 | 19-Aug-11 | 19-Aug-11 | EPA 8015M |       |
| <b>DRAFT: SG-8-10' (E108107-02) Vapor Sampled: 19-Aug-11 Received: 19-Aug-11</b> |        |                 |       |                 |         |           |           |           |       |
| Methane  | 26     | 10              | ppmv  | 1               | EH11902 | 19-Aug-11 | 19-Aug-11 | EPA 8015M |       |
| <b>DRAFT: SG-4-5' (E108107-03) Vapor Sampled: 19-Aug-11 Received: 19-Aug-11</b>  |        |                 |       |                 |         |           |           |           |       |
| Methane  | ND     | 10              | ppmv  | 1               | EH11902 | 19-Aug-11 | 19-Aug-11 | EPA 8015M |       |
| <b>DRAFT: SG-4-10' (E108107-04) Vapor Sampled: 19-Aug-11 Received: 19-Aug-11</b> |        |                 |       |                 |         |           |           |           |       |
| Methane  | ND     | 10              | ppmv  | 1               | EH11902 | 19-Aug-11 | 19-Aug-11 | EPA 8015M |       |
| <b>DRAFT: SG-4-20' (E108107-05) Vapor Sampled: 19-Aug-11 Received: 19-Aug-11</b> |        |                 |       |                 |         |           |           |           |       |
| Methane  | 49     | 10              | ppmv  | 1               | EH11902 | 19-Aug-11 | 19-Aug-11 | EPA 8015M |       |
| <b>DRAFT: SG-5-5' (E108107-06) Vapor Sampled: 19-Aug-11 Received: 19-Aug-11</b>  |        |                 |       |                 |         |           |           |           |       |
| Methane  | ND     | 10              | ppmv  | 1               | EH11902 | 19-Aug-11 | 19-Aug-11 | EPA 8015M |       |
| <b>DRAFT: SG-5-10' (E108107-07) Vapor Sampled: 19-Aug-11 Received: 19-Aug-11</b> |        |                 |       |                 |         |           |           |           |       |
| Methane  | 57     | 10              | ppmv  | 1               | EH11902 | 19-Aug-11 | 19-Aug-11 | EPA 8015M |       |
| <b>DRAFT: SG-5-20' (E108107-08) Vapor Sampled: 19-Aug-11 Received: 19-Aug-11</b> |        |                 |       |                 |         |           |           |           |       |
| Methane  | ND     | 10              | ppmv  | 1               | EH11902 | 19-Aug-11 | 19-Aug-11 | EPA 8015M |       |
| <b>DRAFT: SG-6-5' (E108107-09) Vapor Sampled: 19-Aug-11 Received: 19-Aug-11</b>  |        |                 |       |                 |         |           |           |           |       |
| Methane  | ND     | 10              | ppmv  | 1               | EH11902 | 19-Aug-11 | 19-Aug-11 | EPA 8015M |       |



2470 Impala Drive  
 Carlsbad, CA 92010  
 760-804-9678 Phone  
 760-804-9159 Fax

|  |  |                              |
|--|--|------------------------------|
| Environ Corp.<br>18100 Von Karman Ave, Suite 600<br>Irvine, CA 92612 | Project: ENV081711-W1<br>Project Number: WO-2011-71<br>Project Manager: Ms. Rebekah Wale | Reported:<br>19-Aug-11 14:46 |
|--|--|------------------------------|

**DRAFT: Soil Gas and Vapor Analysis**  
**H&P Mobile Geochemistry, Inc.**

| Analyte   | Result | Reporting Limit | Units | Dilution Factor | Batch   | Prepared  | Analyzed  | Method    | Notes |
|---|--------|-----------------|-------|-----------------|---------|-----------|-----------|-----------|-------|
| <b>DRAFT: SG-6-5' Dup (E108107-10) Vapor</b> <b>Sampled: 19-Aug-11</b> <b>Received: 19-Aug-11</b> |        |                 |       |                 |         |           |           |           |       |
| Methane   | ND     | 10              | ppmv  | 1               | EH11902 | 19-Aug-11 | 19-Aug-11 | EPA 8015M |       |
| <b>DRAFT: SG-6-10' (E108107-11) Vapor</b> <b>Sampled: 19-Aug-11</b> <b>Received: 19-Aug-11</b>    |        |                 |       |                 |         |           |           |           |       |
| Methane   | ND     | 10              | ppmv  | 1               | EH11902 | 19-Aug-11 | 19-Aug-11 | EPA 8015M |       |
| <b>DRAFT: SG-6-20' (E108107-12) Vapor</b> <b>Sampled: 19-Aug-11</b> <b>Received: 19-Aug-11</b>    |        |                 |       |                 |         |           |           |           |       |
| Methane   | 74     | 10              | ppmv  | 1               | EH11902 | 19-Aug-11 | 19-Aug-11 | EPA 8015M |       |
| <b>DRAFT: SG-10-5' (E108107-13) Vapor</b> <b>Sampled: 19-Aug-11</b> <b>Received: 19-Aug-11</b>    |        |                 |       |                 |         |           |           |           |       |
| Methane   | 24     | 10              | ppmv  | 1               | EH11902 | 19-Aug-11 | 19-Aug-11 | EPA 8015M |       |
| <b>DRAFT: SG-10-10' (E108107-14) Vapor</b> <b>Sampled: 19-Aug-11</b> <b>Received: 19-Aug-11</b>   |        |                 |       |                 |         |           |           |           |       |
| Methane   | 17     | 10              | ppmv  | 1               | EH11902 | 19-Aug-11 | 19-Aug-11 | EPA 8015M |       |
| <b>DRAFT: SG-8-20' (E108107-15) Vapor</b> <b>Sampled: 19-Aug-11</b> <b>Received: 19-Aug-11</b>    |        |                 |       |                 |         |           |           |           |       |
| Methane   | ND     | 10              | ppmv  | 1               | EH11902 | 19-Aug-11 | 19-Aug-11 | EPA 8015M |       |
| <b>DRAFT: SG-10-20' (E108107-16) Vapor</b> <b>Sampled: 19-Aug-11</b> <b>Received: 19-Aug-11</b>   |        |                 |       |                 |         |           |           |           |       |
| Methane   | ND     | 10              | ppmv  | 1               | EH11902 | 19-Aug-11 | 19-Aug-11 | EPA 8015M |       |



2470 Impala Drive  
Carlsbad, CA 92010  
760-804-9678 Phone  
760-804-9159 Fax

|  |  |                              |
|--|--|------------------------------|
| Environ Corp.<br>18100 Von Karman Ave, Suite 600<br>Irvine, CA 92612 | Project: ENV081711-W1<br>Project Number: WO-2011-71<br>Project Manager: Ms. Rebekah Wale | Reported:<br>19-Aug-11 14:46 |
|--|--|------------------------------|

**DRAFT: Soil Gas and Vapor Analysis - Quality Control**  
**H&P Mobile Geochemistry, Inc.**

| Analyte | Result | Reporting<br>Limit | Units | Spike<br>Level | Source<br>Result | %REC | %REC<br>Limits | RPD | RPD<br>Limit | Notes |
|---------|--------|--------------------|-------|----------------|------------------|------|----------------|-----|--------------|-------|
|---------|--------|--------------------|-------|----------------|------------------|------|----------------|-----|--------------|-------|

**Batch EH11902 - GC**

**Blank (EH11902-BLK1)**

Prepared & Analyzed: 19-Aug-11

|         |    |    |      |  |  |  |  |  |  |  |
|---------|----|----|------|--|--|--|--|--|--|--|
| Methane | ND | 10 | ppmv |  |  |  |  |  |  |  |
|---------|----|----|------|--|--|--|--|--|--|--|



2470 Impala Drive  
Carlsbad, CA 92010  
760-804-9678 Phone  
760-804-9159 Fax

Environ Corp.  
18100 Von Karman Ave, Suite 600  
Irvine, CA 92612

Project: ENV081711-W1  
Project Number: WO-2011-71  
Project Manager: Ms. Rebekah Wale

Reported:  
19-Aug-11 14:46

### Notes and Definitions

DET Analyte DETECTED  
ND Analyte NOT DETECTED at or above the reporting limit  
NR Not Reported  
dry Sample results reported on a dry weight basis  
RPD Relative Percent Difference

### Appendix

H&P Mobile Geochemistry, Inc. is approved as an Environmental Laboratory in conformance with the Environmental Laboratory Accreditation Program (CA) for the category of Volatile and Semi-Volatile Organic Chemistry of Hazardous Waste for the following methods:

Certificate# 2741, 2743, 2579, 2754 & 2740 approved for EPA 8260 and LUFT GC/MS  
Certificate# 2742, 2745, & 2741 approved for LUFT  
Certificate# 2745 & 2742 approved for EPA 418.1

H&P Mobile Geochemistry, Inc. is approved as an Environmental Laboratory in conformance with the National Environmental Accreditation Conference Standards for the category Environmental Analysis Air and Emissions for the following analytes and methods:

1,2,4-Trichlorobenzene by EPA TO-15 & TO-14A  
Hexachlorobutadiene by EPA TO-15 & TO-14A  
1,2,4-Trimethylbenzene by EPA TO-14A  
1,2-Dichlorobenzene by EPA TO-15 & TO-14A  
1,3,5-Trimethylbenzene by EPA TO-14A  
1,4-Dichlorobenzene by EPA TO-15 & TO-14A  
Benzene by EPA TO-15 & TO-14A  
Chlorobenzene by EPA TO-15 & TO-14A  
Ethyl benzene by EPA TO-15 & TO-14A  
Styrene by EPA TO-15 & TO-14A  
Toluene by EPA TO-15 & TO-14A  
Total Xylenes by EPA TO-15 & TO-14A  
1,1,1-Trichloroethane by EPA TO-15 & TO-14A  
1,1,2,2-Tetrachloroethane by EPA TO-15 & TO-14A  
1,1,2-Trichloroethane by EPA TO-15 & TO-14A  
1,1-Dichloroethane by EPA TO-15 & TO-14A  
1,1-Dichloroethene by EPA TO-15 & TO-14A  
1,2-Dichloroethane by EPA TO-15 & TO-14A  
1,2-Dichloropropane by EPA TO-15 & TO-14A  
Bromoform by EPA TO-15  
Bromomethane by EPA TO-15 & TO-14A  
Carbon tetrachloride by EPA TO-15 & TO-14A  
Chloroethane by EPA TO-15  
Chloroform by EPA TO-15 & TO-14A  
Chloromethane by EPA TO-15 & TO-14A  
cis-1,2-Dichloroethene by EPA TO-15  
cis-1,2-Dichloropropene by EPA TO-15 & TO-14A  
Methylene chloride by EPA TO-15 & TO-14A  
Tetrachloroethane by EPA TO-15 & TO-14A  
trans-1,2-Dichloroethene by EPA TO-15  
trans-1,2-Dichloropropene by EPA TO-15 & TO-14A  
Trichloroethene by EPA TO-15 & TO-14A  
Vinyl chloride by EPA TO-15 & TO-14A  
2-Butanone by EPA TO-15  
4-Methyl-2-Pentanone by EPA TO-15  
Hexane by EPA TO-15  
Methyl tert-butyl ether by EPA TO-15  
Vinyl acetate by EPA TO-15

This certification applies to samples analyzed in sunma canisters.

## Chain of Custody Record

Client: **ENVIRON**

Address: 18100 Van Korman Ave. Suite 600 Irvine, CA 92612

Collector: P. P. P. P. Client Project # WO-2011-71 Location: 1000 Santa Monica Blvd, Los Angeles Project Contact: Rebekah Wale

Email: wale@envirocorp.com, kjohnson@envirocorp.com Phone: 949-798-3693 Fax: \_\_\_\_\_ Turn around time: \_\_\_\_\_

Geotracker EDF: Yes  No   
Global ID: \_\_\_\_\_  
Excel EDD: Yes  No   
Special Instructions: \_\_\_\_\_

Sample Receipt  
Initial:  Yes  No  
Seal Initial:  Yes  No  N/A  
Cold:  Yes  No  N/A  
Temperature: \_\_\_\_\_

Lab Work Order # E108107 / EH11902

| Sample Name | Field Point Name | Purge Vol | Time | Date | Sample Type | Container Type | Total # of containers |
|-------------|------------------|-----------|------|------|-------------|----------------|-----------------------|
| SC-6-10'    |                  | 348       | 1344 | 8/11 | vapor       | syringe        | 1                     |
| SC-6-20'    |                  | 378       | 1351 |      |             |                | 1                     |
| SC-10-5'    |                  | 333       | 1356 |      |             |                | 1                     |
| SC-10-10'   |                  | 348       | 1401 |      |             |                | 1                     |
| SC-8-20'    |                  | 180       | 1431 |      |             |                | 1                     |
| SC-10-20'   |                  | 180       | 1435 |      |             |                | 1                     |

|                        |                                   |   |
|------------------------|-----------------------------------|---|
| 8260B Full List        | <input type="checkbox"/> BTEX/OXY | <input type="checkbox"/> TPH gas  |
| 8015M TPH              | <input type="checkbox"/> g        | <input type="checkbox"/> d <input type="checkbox"/> ext                       |
| 418.1 TRPH             |                                   |   |
| VOC's: Full List       | <input type="checkbox"/> 8260B    | <input type="checkbox"/> TO-15  |
| VOC's: Short List/DTSC | <input type="checkbox"/> 8260B    | <input type="checkbox"/> TO-15  |
| VOC's: SAM, 8260B      | <input type="checkbox"/> SAM A    | <input type="checkbox"/> SAM B  |
| Naphthalene            | <input type="checkbox"/> 8260B    | <input type="checkbox"/> TO-15  |
| Oxygenates             | <input type="checkbox"/> 8260B    | <input type="checkbox"/> TO-15  |
| TPHv gas               | <input type="checkbox"/> 8260B    | <input type="checkbox"/> TO-15  |
| Ketones                | <input type="checkbox"/> 8260B    | <input type="checkbox"/> TO-15  |
| Other _____            | <input type="checkbox"/> 8260B    | <input type="checkbox"/> TO-15  |
| Leak Check Compound    | <input type="checkbox"/> 1,1 DFA  | <input type="checkbox"/> OTHER  |
| Methane                |                                   |   |
| Fixed Gases            | <input type="checkbox"/> CO2      | <input checked="" type="checkbox"/> O2 <input checked="" type="checkbox"/> N2 |

Relinquished by: (Signature) [Signature] (Company) \_\_\_\_\_ Date: 8/19/11 Time: 14:40

Relinquished by: (Signature) [Signature] (Company) \_\_\_\_\_ Date: \_\_\_\_\_ Time: \_\_\_\_\_

Relinquished by: (Signature) \_\_\_\_\_ (Company) \_\_\_\_\_ Date: \_\_\_\_\_ Time: \_\_\_\_\_

Signature constitutes authorization to proceed with analysis and acceptance of condition on back.

Sample disposal instruction:  Disposal  Return to client  Pickup





Mobile  
Geochemistry  
Inc.

2470 Impala Dr., Carlsbad, CA 92010 • ph 760.804.9678 • fax 760.804.9159  
1855 Coronado Ave., Signal Hill, CA 90755 • ph 800.834.9888

### Chain of Custody Record

Date: 8/19/11

H&P Project # ENV081711-11

Outside Lab:

ENVIRON

Collector: D. Petrusin

Page: 1 of 2

Client: 18160 Van Karmen Ave, Suite 600  
Address: Irvine, CA 92618  
Email: wa@environmental.com, kjohnson@environmental.com

Client Project # W0-78011-71  
Location: 10000 Santa Monica Blvd, Los Angeles  
Phone: 949-498-3693 Fax: \_\_\_\_\_

Project Contact: Rebekah Wale  
Turn around time: \_\_\_\_\_

Geotracker EDD: Yes  No   
Global ID: \_\_\_\_\_  
Excel EDD: Yes  No

Sample Receipt  
Infect:  Yes  No  
Seal Infect:  Yes  No  N/A  
Cold:  Yes  No  N/A  
Temperature: \_\_\_\_\_

Special Instructions:

Lab Work Order # E108107 / EH 11902

| Sample Name | Field Point Name | Purge Vol | Time | Date    | Sample Type | Container Type | Total # of containers | SOIL/GW  | SOIL VAPOR/AIR ANALYSIS | Time |
|-------------|------------------|-----------|------|---------|-------------|----------------|-----------------------|--|-------------------------|------|
| SG-8-5      |                  | 333       | 1301 | 8/19/11 | Vapor       | 3yr vgc        | 1                     | 8260B Full List  |                         | X    |
| SG-8-10     |                  | 348       | 1304 |         |             |                | 1                     | 8260B <input type="checkbox"/> BTEX/OXY <input type="checkbox"/> TPH gas                         |                         | X    |
| SG-4-5      |                  | 333       | 1310 |         |             |                | 1                     | 8015M TPH <input type="checkbox"/> g <input type="checkbox"/> d <input type="checkbox"/> ext     |                         | X    |
| SG-4-10     |                  | 348       | 1318 |         |             |                | 1                     | 418.1 TRPH   |                         | X    |
| SG-A-20     |                  | 378       | 1322 |         |             |                | 1                     | VOC's: Full List <input type="checkbox"/> 8260B <input type="checkbox"/> TO-15                   |                         | X    |
| SG-5-5      |                  | 333       | 1326 |         |             |                | 1                     | VOC's: Short List/DTSC <input type="checkbox"/> 8260B <input type="checkbox"/> TO-15             |                         | X    |
| SG-5-10     |                  | 348       | 1330 |         |             |                | 1                     | VOC's: SAM, 8260B <input type="checkbox"/> SAM A <input type="checkbox"/> SAM B                  |                         | X    |
| SG-5-80'    |                  | 378       | 1334 |         |             |                | 1                     | Naphthalene <input type="checkbox"/> 8260B <input type="checkbox"/> TO-15                        |                         | X    |
| SG-6-5'     |                  | 333       | 1338 |         |             |                | 1                     | Oxygenates <input type="checkbox"/> 8260B <input type="checkbox"/> TO-15                         |                         | X    |
| SG-6-5'-dup |                  | 393       | 1339 |         |             |                | 1                     | TPHv gas <input type="checkbox"/> 8260B <input type="checkbox"/> TO-15                           |                         | X    |
|             |                  |           |      |         |             |                |                       | Ketones <input type="checkbox"/> 8260B <input type="checkbox"/> TO-15                            |                         | X    |
|             |                  |           |      |         |             |                |                       | Other <input type="checkbox"/> 8260B <input type="checkbox"/> TO-15                              |                         | X    |
|             |                  |           |      |         |             |                |                       | Leak Check Compound <input type="checkbox"/> 1,1 DFA <input type="checkbox"/> OTHER              |                         | X    |
|             |                  |           |      |         |             |                |                       | Methane  |                         | X    |
|             |                  |           |      |         |             |                |                       | Fixed Gases <input type="checkbox"/> CO2 <input type="checkbox"/> O2 <input type="checkbox"/> N2 |                         | X    |

Relinquished by: (Signature) \_\_\_\_\_ (company) ENVIRON  
Received by: (Signature) \_\_\_\_\_ (company) H&P  
Date: 8/19/11  
Time: 14:40

Relinquished by: (Signature) \_\_\_\_\_ (company) \_\_\_\_\_  
Received by: (Signature) \_\_\_\_\_ (company) \_\_\_\_\_  
Date: \_\_\_\_\_ Time: \_\_\_\_\_

Signature constitutes authorization to proceed with analysis and acceptance of condition on back.  
Sample disposal instruction:  Disposal  Return to client  Pickup