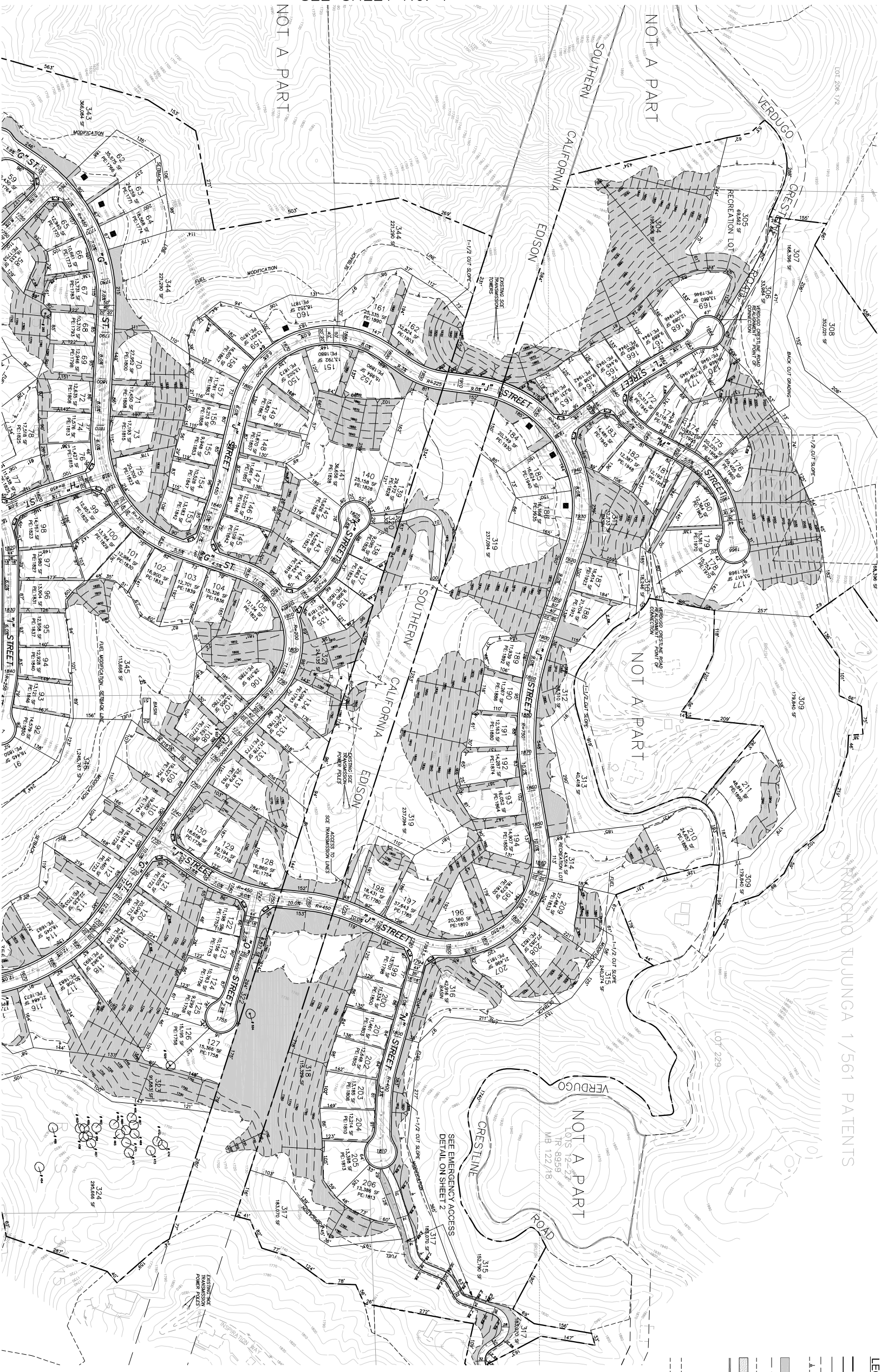


SEE SHEET No. 1

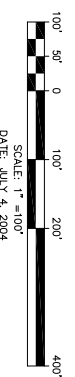


LEGEND

- LOT NUMBER
- TRACT BOUNDARY
- PROPOSED STREET R.O.W
- PROPOSED LOT LINES
- PROPOSED CONTOURS
- PROPOSED DAYLIGHT LINE
- CUSTOM LOT
- MANUFACTURED SLOPES
- FILE MODIFICATION
- SETBACK LINE
- EXISTING EASEMENTS
- PROPOSED BRIDGE
- PROPOSED RETAINING WALL AND HEIGHT
- TREES (PRESERVED)
- TREES (IMPACTED)
- SOUTHERN CALIFORNIA EDISON PARCEL BOUNDARY

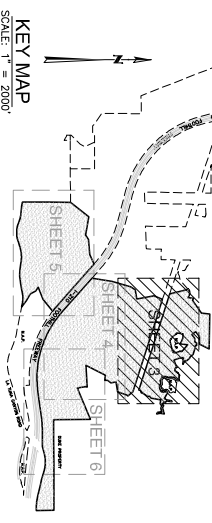
SEE SHEET No. 1

SEE SHEET No. 4



SCALE: 1" = 100'

DATE: JULY 4, 2004



KEY MAP
SCALE: 1" = 2000'



CMBE
 6345 Balboa Blvd, Suite 140
 Culver City, CA 90230
 (310) 543-5384
 R.C.E. NO. 25973 DATE

DESIGNED BY: O.A.
 DRAWN BY: O.A.
 CHECKED BY: F.E. & M. Employees Defined Contribution Plan Trust
 444 S. FLOWER STREET, SUITE 300
 LOS ANGELES, CA 90071

DEVELOPER: WHITEBIRD, INC.
 Doing Business in California as California Whitebird, Inc.
 444 S. FLOWER STREET, SUITE 300
 LOS ANGELES, CA 90071

VESTING TENTATIVE TRACT
 MAP No. 061672
 IN THE CITY OF LOS ANGELES

PROJECT NO. 150101
 SHEET 3 OF 6