

# SOUTHEAST LOS ANGELES INDUSTRIAL AREA Data and Recommendations

## SUMMARY DATA

**681.5 Total Acres of Land**    **1,574 Businesses**    **17,139 Jobs**  
 59% Light Industrial Use    292 Manufacturing: 19% of total    29% Manufacturing: 4,913 jobs  
 9% Heavy Industrial use    409 Wholesale Trade: 26% of total    22% Wholesale Trade: 3,845 jobs  
 6% Residential Use  
 12% Commercial Use  
 17% Other

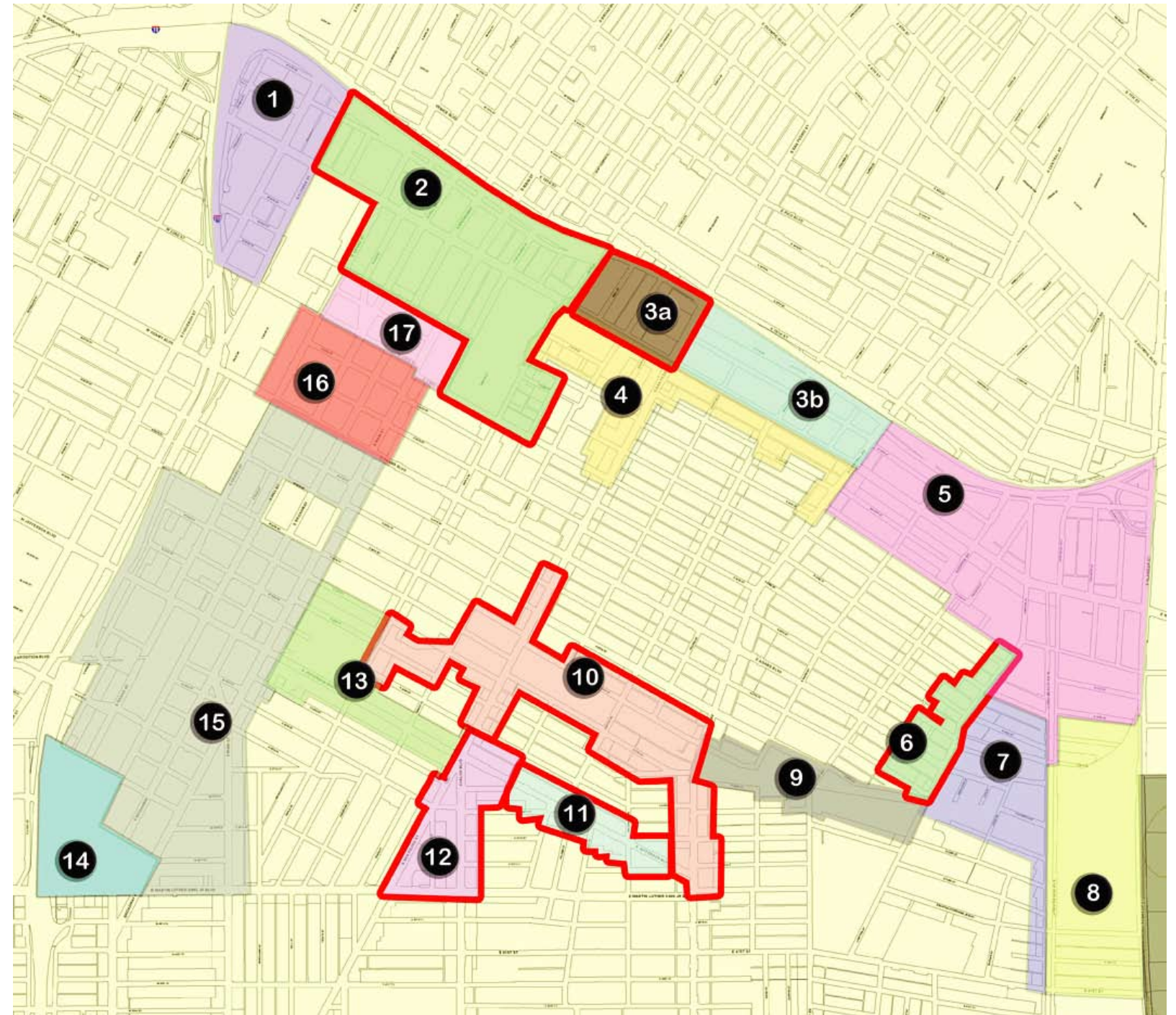
## DEMOGRAPHICS (Within 1 Mile)<sup>1</sup>

20,894 Persons Employed in Manufacturing: 29%  
 92,920 Persons Living in Poverty: 42%  
 94,386 Persons With a HS Diploma or Less: 80%  
 26,147 Housing Units Without Auto Access: 42%  
<sup>1</sup>Demographics are for survey area plus 1 mile radius.  
 See enclosed Southeast Los Angeles Demographic Data for conditions measured against the City as a whole.

## CONTENTS

Sub Area Maps - 18 Sub Areas  
 Southeast Los Angeles Demographic Data

## INDEX MAP



— Potential change areas

map not to scale

## SUMMARY STATISTICS BY SUB AREA

ANALYSIS AREA	NO. OF FIRMS	NO. OF JOBS	AREA (In Acres)	
			Total	Industrial/Commercial
Analysis Area 1	64	1,843	32.0	25.8
Analysis Area 2	341	2,128	69.3	39.2
Analysis Area 3	93	622	35.5	31.4
Analysis Area 3A <sup>2</sup>	34	226	13.3	12.2
Analysis Area 3B <sup>2</sup>	59	396	22.5	19.5
Analysis Area 4	82	523	20.0	14.3
Analysis Area 5	189	2,270	100.5	93.0
Analysis Area 6	17	99	11.3	8.0
Analysis Area 7	50	877	33.7	25.2
Analysis Area 8	49	763	64.5	45.9
Analysis Area 9	14	108	23.9	17.2
Analysis Area 10	67	589	43.2	33.2
Analysis Area 11	15	109	11.1	2.8
Analysis Area 12	25	302	13.4	12.2
Analysis Area 13	121	744	28.5	25.2
Analysis Area 14	NA	NA	16.9	8.1
Analysis Area 15	331	4,541	137.7	106.9
Analysis Area 16	67	849	26.6	20.2
Analysis Area 17	49	772	13.5	12.5
<b>Total Area</b>	<b>1,574</b>	<b>17,139</b>	<b>681.5</b>	<b>521.1</b>

<sup>2</sup>Sub-portions of Analysis Area 3



# Southeast Los Angeles Industrial Area Analysis Area 1

**Survey Analysis Areas**



**Land Uses as Surveyed**

- Commercial**
- Grocery / Liquor / Convenience
  - Restaurant / Bar
  - Commercial / Service / Office
  - Retail - Community scale
  - Retail - Regional scale
  - Adult

- Industrial**
- Research / Intellectual / Industry
  - Light Industry
  - Auto
  - Storage (self)
  - Storage (warehouse)
  - Heavy Industrial and Manufacturing
  - Entertainment / Production

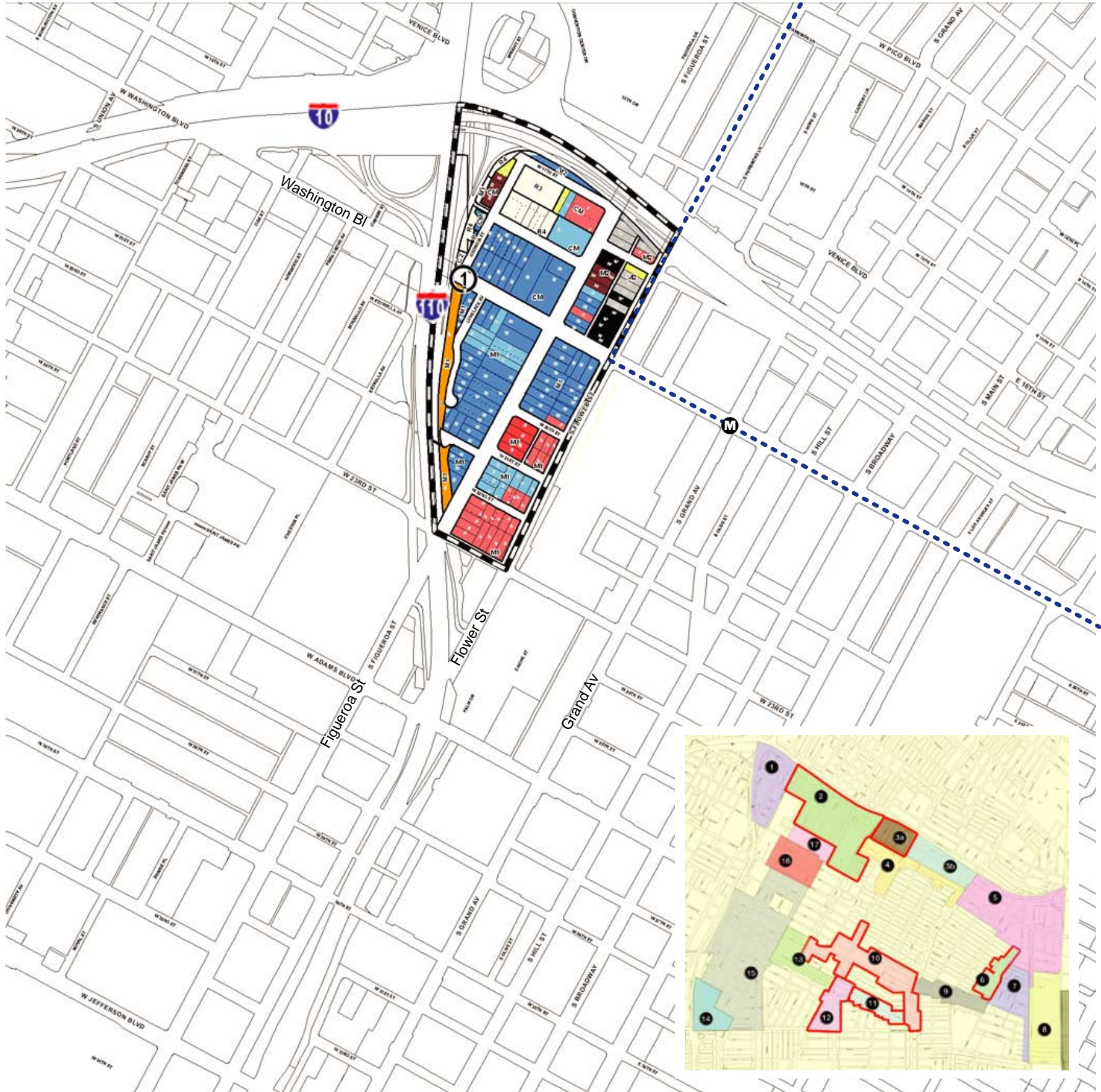
- Infrastructure**
- Institutional
  - Residential
  - Parking
  - Associated Parking
  - Railroad
  - Bridges / Streets / other ROWs

- Misc.**
- Vacant
  - Other
  - Unknown

- Generalized Zoning**
- Single Family, Agriculture
  - Residential
  - RAS
  - Parking
  - Commercial
  - Industrial
  - Misc
  - OS
  - PF

- City Boundary (PLN)
- Metro Blue Line
- Metro stop

↑  
N  
map not to scale



**Top 5 Industries**  
**No. of Firms**  
Wholesale Trade 10  
Manufacturing 9  
Health Services 9  
Other Services 8  
Apparel 4  
All Others 24

**Total Jobs 1,843**  
**Total Firms 64**

**Top 5 Industries**  
**No. of Employees**  
Other Services 836  
Auto Dealers 352  
Manufacturing 188  
Health Services 135  
Wholesale Trade 103  
All Others 229

**Land Use**  
**Total Acres 32.0**  
Light Industrial 20.0 (63%)  
Heavy Industrial 0  
**Total Industrial 20.0 (63%)**  
Residential 0.5 (2%)  
Commercial 5.8 (18%)  
Misc 5.6 (18%)

**Preliminary Recommendations**  
Preserve industrial zoning consistent with current community plan; support concentration of auto related uses.



# Southeast Los Angeles Industrial Area Analysis Area 2

## Survey Analysis Areas



## Land Uses as Surveyed Commercial

- Grocery / Liquor / Convenience
- Restaurant / Bar
- Commercial / Service / Office
- Retail - Community scale
- Retail - Regional scale
- Adult

## Industrial

- Research / Intellectual / Industry
- Light Industry
- Auto
- Storage (self)
- Storage (warehouse)
- Heavy Industrial and Manufacturing
- Entertainment / Production

## Infrastructure

- Institutional
- Residential
- Parking
- Associated Parking
- Railroad
- Bridges / Streets / other ROWs

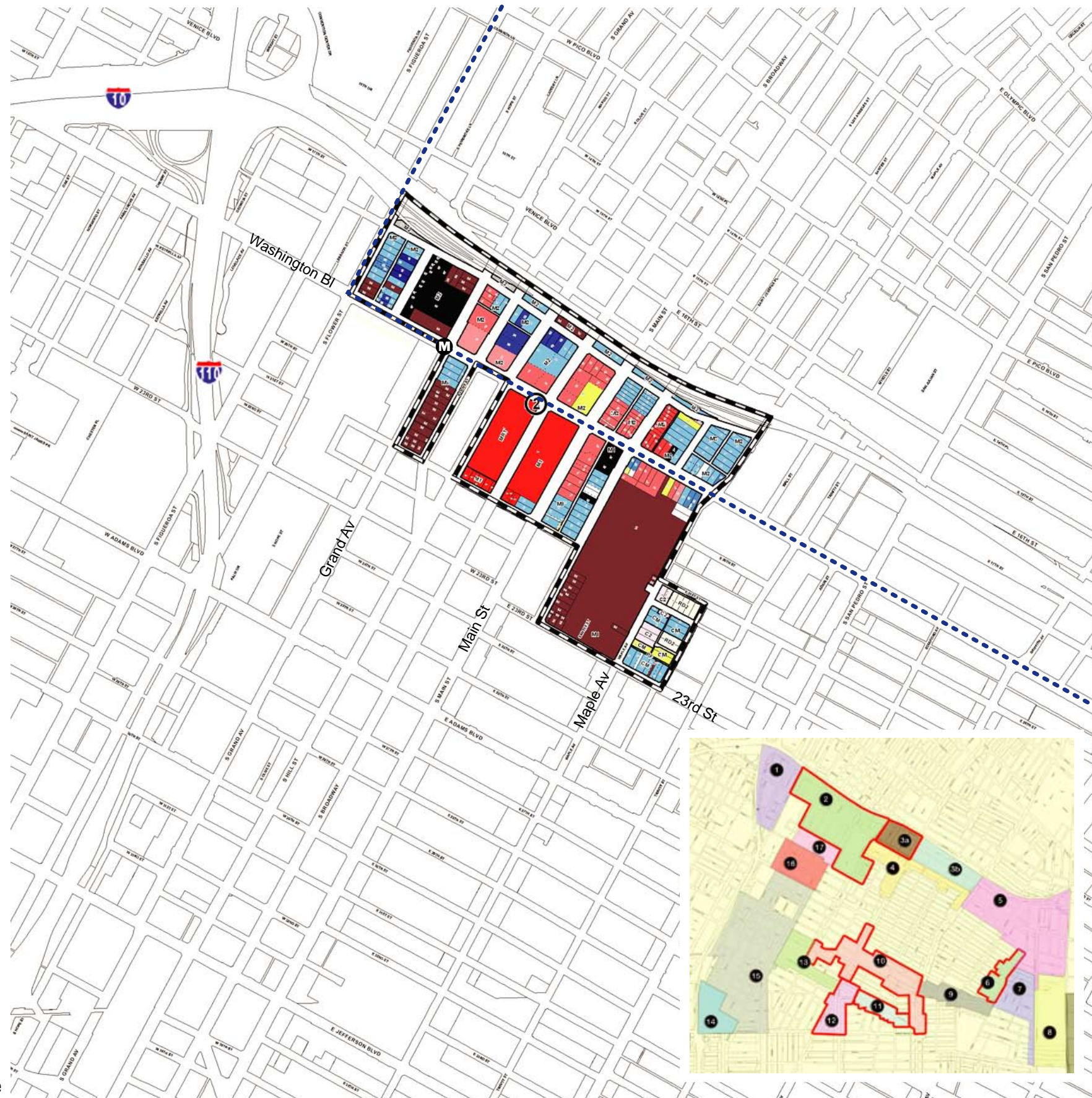
## Misc.

- Vacant
- Other
- Unknown

## Generalized Zoning

- Single Family, Agriculture
- Residential
- RAS
- Parking
- Commercial
- Industrial
- Misc
- OS
- PF
- City Boundary (PLN)
- Metro Blue Line
- Metro stop

map not to scale



### Top 5 Industries

- No. of Firms**
- Wholesale Trade 113
  - Manufacturing 52
  - Other Services 50
  - Apparel 25
  - Furniture 14
  - All Others 87

### Total Jobs 2,128

Total Firms 341

### Top 5 Industries

- No. of Employees**
- Wholesale Trade 846
  - Manufacturing 367
  - Other Services 299
  - Furniture 213
  - Eat/Drink Places 97
  - All Others 306

### Land Use

- Total Acres 69.3**
- Light Industrial 18.2 (26%)
  - Heavy Industrial 0.5 (<1%)
  - Total Industrial 18.7 (27%)**
  - Residential 1.8 (3%)
  - Commercial 20.5 (30%)
  - Misc 28.3 (41%)

## Preliminary Recommendations

Preserve industrial zoning provisionally, which allows industrial and commercial uses. Recommend development of specific plan to determine feasibility of residential and mixed use. If residential development is studied and recommended to replace industrial uses, an affordable housing component and/or other public benefits should be incorporated. Develop strategies and programs to mitigate potential loss of industrial jobs. Recommend development of design guidelines to enhance pedestrian activity along Washington Blvd.



# Southeast Los Angeles Industrial Area Analysis Area 3a

## Survey Analysis Areas



### Land Uses as Surveyed Commercial

- Grocery / Liquor / Convenience
- Restaurant / Bar
- Commercial / Service / Office
- Retail - Community scale
- Retail - Regional scale
- Adult

### Industrial

- Research / Intellectual / Industry
- Light Industry
- Auto
- Storage (self)
- Storage (warehouse)
- Heavy Industrial and Manufacturing
- Entertainment / Production

### Infrastructure

- Institutional
- Residential
- Parking
- Associated Parking
- Railroad
- Bridges / Streets / other ROWs

### Misc.

- Vacant
- Other
- Unknown

### Generalized Zoning

- Single Family, Agriculture
- Residential
- RAS
- Parking
- Commercial
- Industrial
- Misc
- OS
- PF

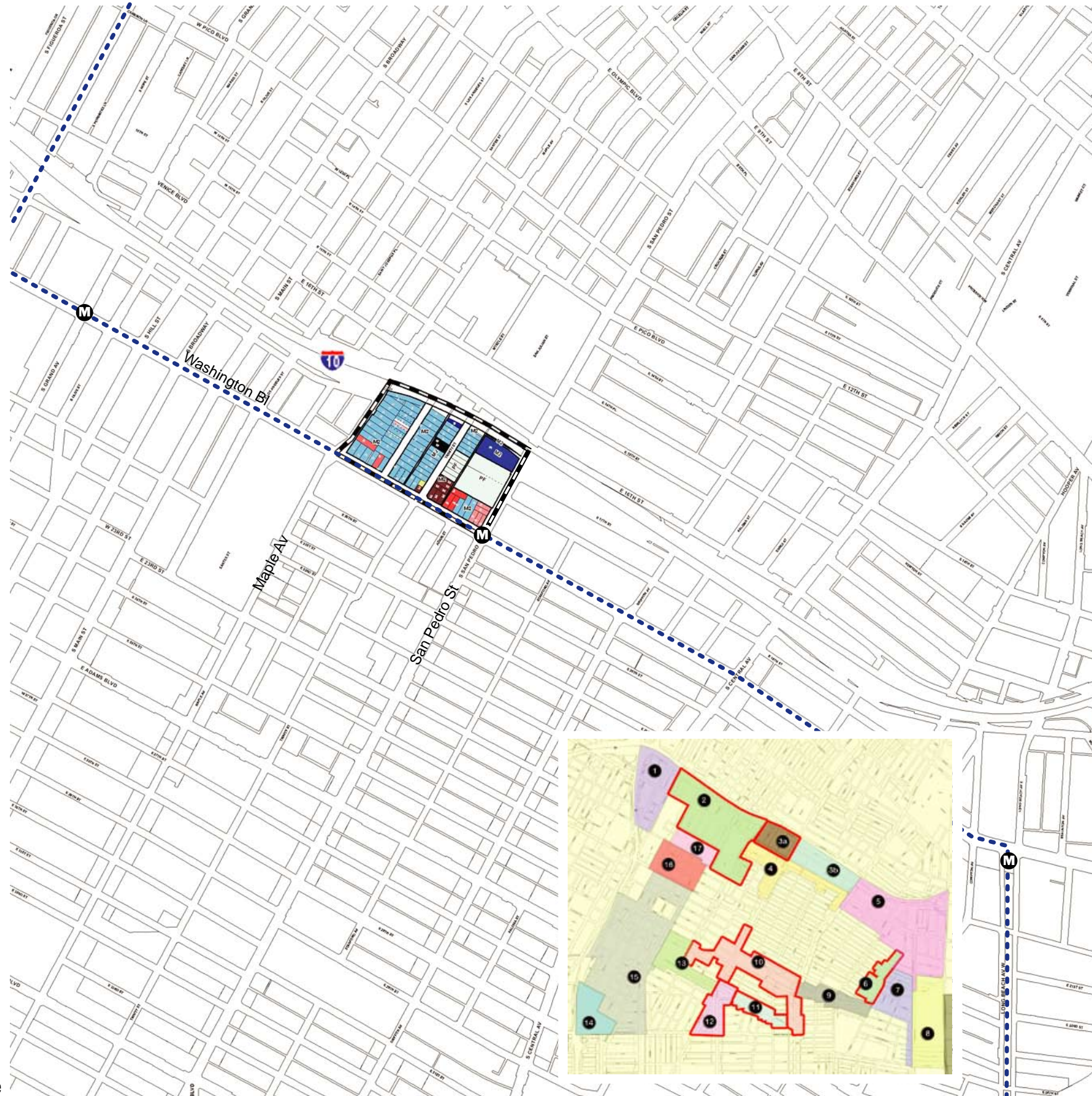
— City Boundary (PLN)

--- Metro Blue Line

M Metro stop



map not to scale



### Top 5 Industries

- No. of Firms**
- Wholesale Trade 9
  - Manufacturing 7
  - Other Services 4
  - Apparel 3
  - Eat/Drink Places 2
  - All Others 9

### Total Jobs 226

**Total Firms 34**

### Top 5 Industries

- No. of Employees**
- Manufacturing 67
  - Other Services 42
  - Wholesale Trade 40
  - Eat/Drink Places 18
  - Education 15
  - All Others 44

### Land Use

- Total Acres 13.3**
- Light Industrial 10.7 (8%)
  - Heavy Industrial 0.1 (1%)
  - Total Industrial 10.8 (82%)**
  - Residential 0.1 (<1%)
  - Commercial 1.4 (11%)
  - Misc 1.0 (8%)

### Preliminary Recommendations

Preserve industrial zoning provisionally, which allows industrial and commercial uses. Recommend development of specific plan to determine feasibility of residential and mixed use. If residential development is studied and recommended to replace industrial uses, an affordable housing component and/or other public benefits should be incorporated. Develop strategies and programs to mitigate potential loss of industrial jobs. Recommend development of design guidelines to enhance pedestrian activity along Washington Blvd.



# Southeast Los Angeles Industrial Area Analysis Area 3b

## Survey Analysis Areas



### Land Uses as Surveyed Commercial

- Grocery / Liquor / Convenience
- Restaurant / Bar
- Commercial / Service / Office
- Retail - Community scale
- Retail - Regional scale
- Adult

### Industrial

- Research / Intellectual / Industry
- Light Industry
- Auto
- Storage (self)
- Storage (warehouse)
- Heavy Industrial and Manufacturing
- Entertainment / Production

### Infrastructure

- Institutional
- Residential
- Parking
- Associated Parking
- Railroad
- Bridges / Streets / other ROWs

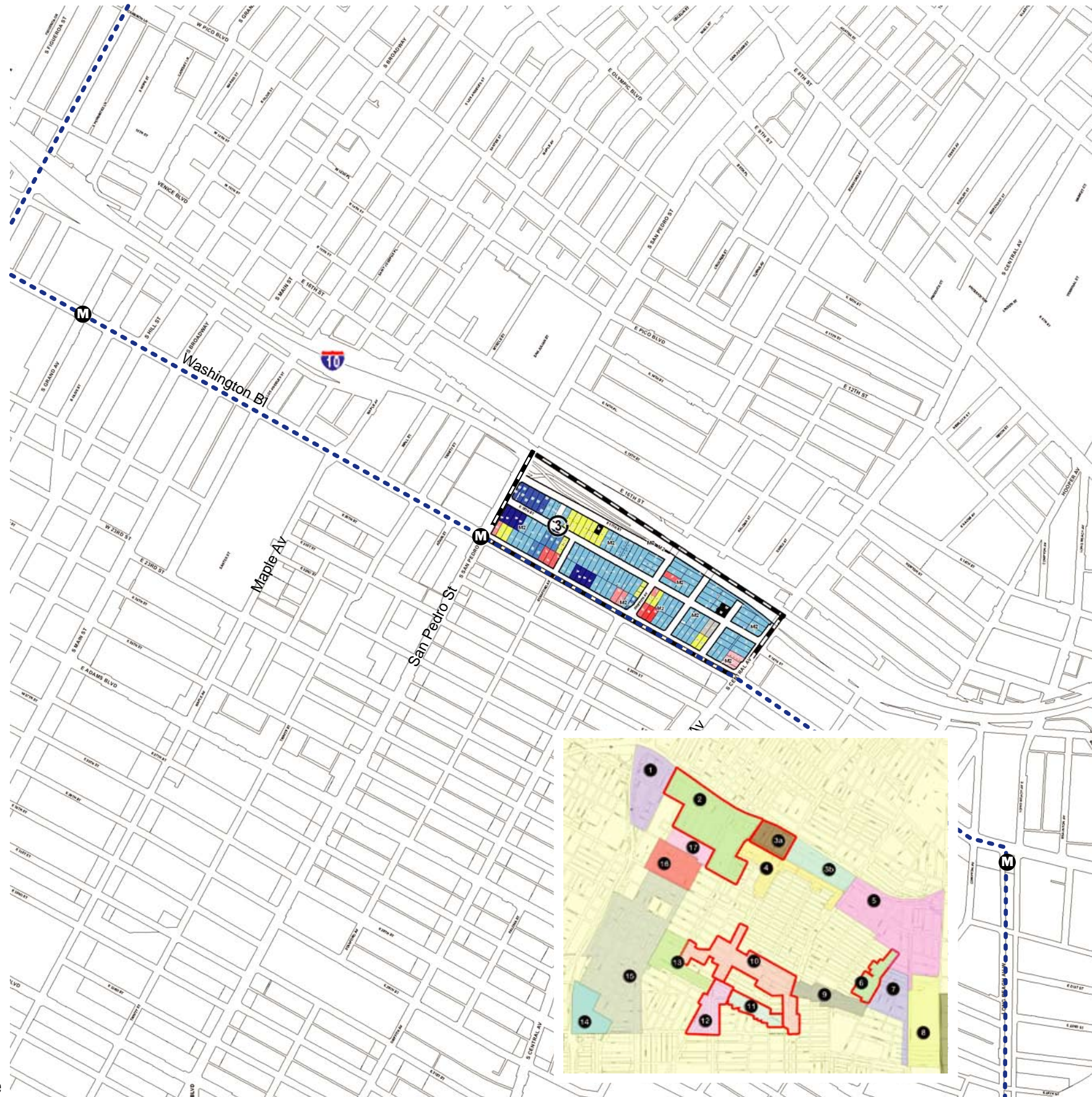
### Misc.

- Vacant
- Other
- Unknown

### Generalized Zoning

- Single Family, Agriculture
- Residential
- RAS
- Parking
- Commercial
- Industrial
- Misc
- OS
- PF
- City Boundary (PLN)
- Metro Blue Line
- Metro stop

map not to scale



### Top 5 Industries

- No. of Firms**
- Wholesale Trade 15
  - Manufacturing 11
  - Other Services 7
  - Apparel 5
  - Eat/Drink Places 4
  - All Others 20

**Total Jobs 396**  
**Total Firms 59**

### Top 5 Industries

- No. of Employees**
- Manufacturing 116
  - Other Services 73
  - Wholesale Trade 70
  - Eat/Drink Places 32
  - Education 26
  - All Others 79

**Land Use**  
**Total Acres 22.5**

- Light Industrial 16.4 (73%)
- Heavy Industrial 1.2 (5%)
- Total Industrial 17.6 (78%)**
- Residential 2.4 (11%)
- Commercial 1.9 (8%)
- Misc 0.6 (3%)

### Preliminary Recommendations

Preserve industrial zoning consistent with current community plan; allow industrial and commercial uses only.



# Southeast Los Angeles Industrial Area Analysis Area 4

**Survey Analysis Areas**



**Land Uses as Surveyed Commercial**

- Grocery / Liquor / Convenience
- Restaurant / Bar
- Commercial / Service / Office
- Retail - Community scale
- Retail - Regional scale
- Adult

**Industrial**

- Research / Intellectual / Industry
- Light Industry
- Auto
- Storage (self)
- Storage (warehouse)
- Heavy Industrial and Manufacturing
- Entertainment / Production

**Infrastructure**

- Institutional
- Residential
- Parking
- Associated Parking
- Railroad
- Bridges / Streets / other ROWs

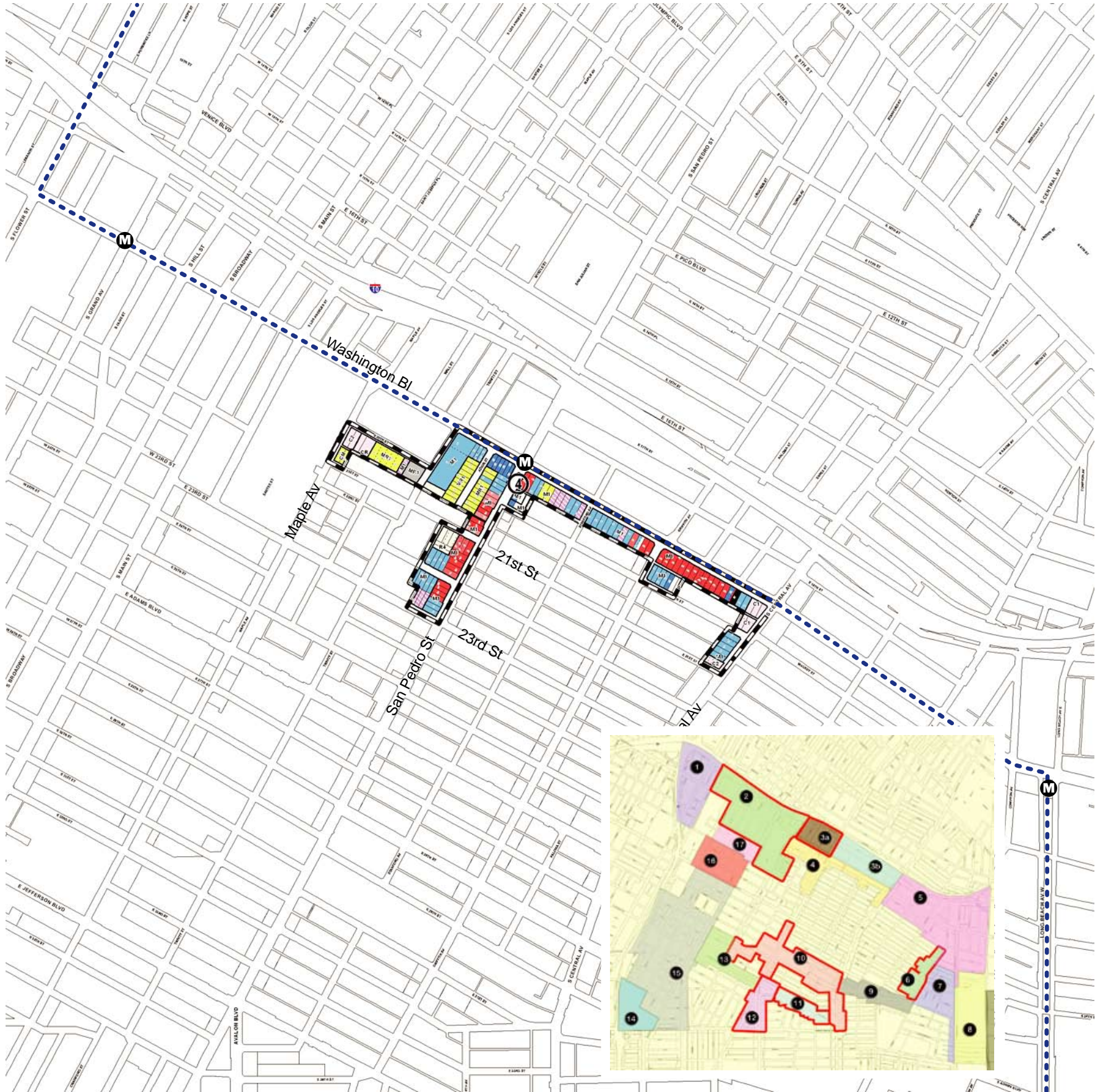
**Misc.**

- Vacant
- Other
- Unknown

**Generalized Zoning**

- Single Family, Agriculture
- Residential
- RAS
- Parking
- Commercial
- Industrial
- Misc
- OS
- PF
- City Boundary (PLN)
- Metro Blue Line
- Metro stop

map not to scale



**Top 5 Industries**

- No. of Firms**
- Wholesale Trade 19
  - Manufacturing 14
  - Other Services 10
  - Eat/Drink Places 7
  - Apparel 6
  - All Others 26

**Total Jobs 523**

**Total Firms 82**

**Top 5 Industries**

- No. of Employees**
- Manufacturing 161
  - Other Services 91
  - Wholesale Trade 88
  - Eat/Drink Places 44
  - Education 31
  - All Others 36

**Land Use**

- Total Acres 20**
- Light Industrial 8.9 (44%)
  - Heavy Industrial 0.0 (0%)
  - Total Industrial 8.9 (44%)**
  - Residential 3.7 (18%)
  - Commercial 5.4 (27%)
  - Misc 2.1 (10%)

**Preliminary Recommendations**

Preserve industrial zoning consistent with current community plan; allow industrial and commercial uses only. Existing residential uses may remain; no new residential uses. As part of Community Plan Program: recommend development of design guidelines to enhance pedestrian activity along San Pedro St. and Washington Blvd.; and recommend development of specific plan to address special conditions along Central Ave. (in conjunction with similar recommendation in Analysis Areas 10 and 12).



# Southeast Los Angeles Industrial Area Analysis Area 5

## Survey Analysis Areas



### Land Uses as Surveyed

- Commercial**
- Grocery / Liquor / Convenience
  - Restaurant / Bar
  - Commercial / Service / Office
  - Retail - Community scale
  - Retail - Regional scale
  - Adult

- Industrial**
- Research / Intellectual / Industry
  - Light Industry
  - Auto
  - Storage (self)
  - Storage (warehouse)
  - Heavy Industrial and Manufacturing
  - Entertainment / Production

- Infrastructure**
- Institutional
  - Residential
  - Parking
  - Associated Parking
  - Railroad
  - Bridges / Streets / other ROWs

- Misc.**
- Vacant
  - Other
  - Unknown

### Generalized Zoning

- Single Family, Agriculture
- Residential
- RAS
- Parking
- Commercial
- Industrial
- Misc
- OS
- PF
- City Boundary (PLN)
- Metro Blue Line
- Metro stop



map not to scale

**Top 5 Industries**  
**No. of Firms**  
 Wholesale Trade 54  
 Manufacturing 40  
 Apparel 18  
 Other Services 17  
 Automotive 9  
 All Others 51

**Total Jobs 2,270**  
**Total Firms 189**

**Top 5 Industries**  
**No. of Employees**  
 Wholesale Trade 834  
 Manufacturing 753  
 Other Services 248  
 Education 120  
 Apparel 103  
 All Others 212

**Land Use**  
**Total Acres 100.5**  
 Light Industrial 76.2 (76%)  
 Heavy Industrial 15.4 (15%)  
**Total Industrial 91.6 (91%)**  
 Residential 1.7 (2%)  
 Commercial 1.4 (1%)  
 Misc 5.8 (6%)

**Preliminary Recommendations**  
 Preserve industrial zoning consistent with current community plan; allow industrial uses and ancillary commercial uses only. As part of Community Plan Program: recommend development of design guidelines to improve function and appearance of industrial uses; and identify and implement infrastructure plans and investment strategies to facilitate industrial uses.



# Southeast Los Angeles Industrial Area Analysis Area 6

**Survey Analysis Areas**



**Land Uses as Surveyed**

- Grocery / Liquor / Convenience
- Restaurant / Bar
- Commercial / Service / Office
- Retail - Community scale
- Retail - Regional scale
- Adult
- Industrial**
- Research / Intellectual / Industry
- Light Industry
- Auto
- Storage (self)
- Storage (warehouse)
- Heavy Industrial and Manufacturing
- Entertainment / Production
- Infrastructure**
- Institutional
- Residential
- Parking
- Associated Parking
- Railroad
- Bridges / Streets / other ROWs
- Misc.**
- Vacant
- Other
- Unknown

**Generalized Zoning**

- Single Family, Agriculture
- Residential
- RAS
- Parking
- Commercial
- Industrial
- Misc
- OS
- PF
- City Boundary (PLN)
- Metro Blue Line
- Metro stop

map not to scale



**Top Industries**  
**No. of Firms**  
 Manufacturing 5  
 Wholesale Trade 3  
 Other Services 3  
 All Others 6

**Total Jobs 99**  
**Total Firms 17**

**Top 5 Industries**  
**No. of Employees**  
 Wholesale Trade 50  
 Manufacturing 34  
 Other Services 8  
 Automotive 3  
 All Others 4

**Land Use**  
**Total Acres 11.3**  
 Light Industrial 7.3 (65%)  
 Heavy Industrial 0.5 (4%)  
**Total Industrial 7.8 (69%)**  
 Residential 3.1 (28%)  
 Commercial 0.2 (1%)  
 Misc 0.2 (2%)

**Preliminary Recommendations**

As part of Community Plan Program: consider change from industrial to residential land use designation and zoning; and develop strategies and programs to mitigate potential loss of industrial jobs.



# Southeast Los Angeles Industrial Area Analysis Area 7

## Survey Analysis Areas



### Land Uses as Surveyed

#### Commercial

- Grocery / Liquor / Convenience
- Restaurant / Bar
- Commercial / Service / Office
- Retail - Community scale
- Retail - Regional scale
- Adult

#### Industrial

- Research / Intellectual / Industry
- Light Industry
- Auto
- Storage (self)
- Storage (warehouse)
- Heavy Industrial and Manufacturing
- Entertainment / Production

#### Infrastructure

- Institutional
- Residential
- Parking
- Associated Parking
- Railroad
- Bridges / Streets / other ROWs

#### Misc.

- Vacant
- Other
- Unknown

#### Generalized Zoning

- Single Family, Agriculture
- Residential
- RAS
- Parking
- Commercial
- Industrial
- Misc
- OS
- PF
- City Boundary (PLN)
- Metro Blue Line
- Metro stop



map not to scale

### Top 5 Industries

- No. of Firms**
- Wholesale Trade 15
  - Manufacturing 12
  - Apparel 6
  - Other Services 5
  - Real Estate 2
  - All Others 5

**Total Jobs 877**  
**Total Firms 50**

### Top 5 Industries

- No. of Employees**
- Manufacturing 345
  - Wholesale Trade 301
  - Education 98
  - Construction 14
  - Furniture 14
  - All Others 105

**Land Use**  
**Total Acres 33.7**

- Light Industrial 22.6 (67%)
- Heavy Industrial 2.4 (7%)
- Total Industrial 25.1 (74%)**
- Residential 4.3 (13%)
- Commercial 0.1 (0%)
- Misc 4.2 (12%)

### Preliminary Recommendations

Preserve industrial zoning consistent with current community plan; allow industrial and ancillary commercial uses only. As part of Community Plan Program: consider changes to land use designation and zoning, and/or development of design guidelines that provide a better transition between residential and industrial uses.



# Southeast Los Angeles Industrial Area Analysis Area 8

## Survey Analysis Areas



### Land Uses as Surveyed Commercial

- Grocery / Liquor / Convenience
- Restaurant / Bar
- Commercial / Service / Office
- Retail - Community scale
- Retail - Regional scale
- Adult

### Industrial

- Research / Intellectual / Industry
- Light Industry
- Auto
- Storage (self)
- Storage (warehouse)
- Heavy Industrial and Manufacturing
- Entertainment / Production

### Infrastructure

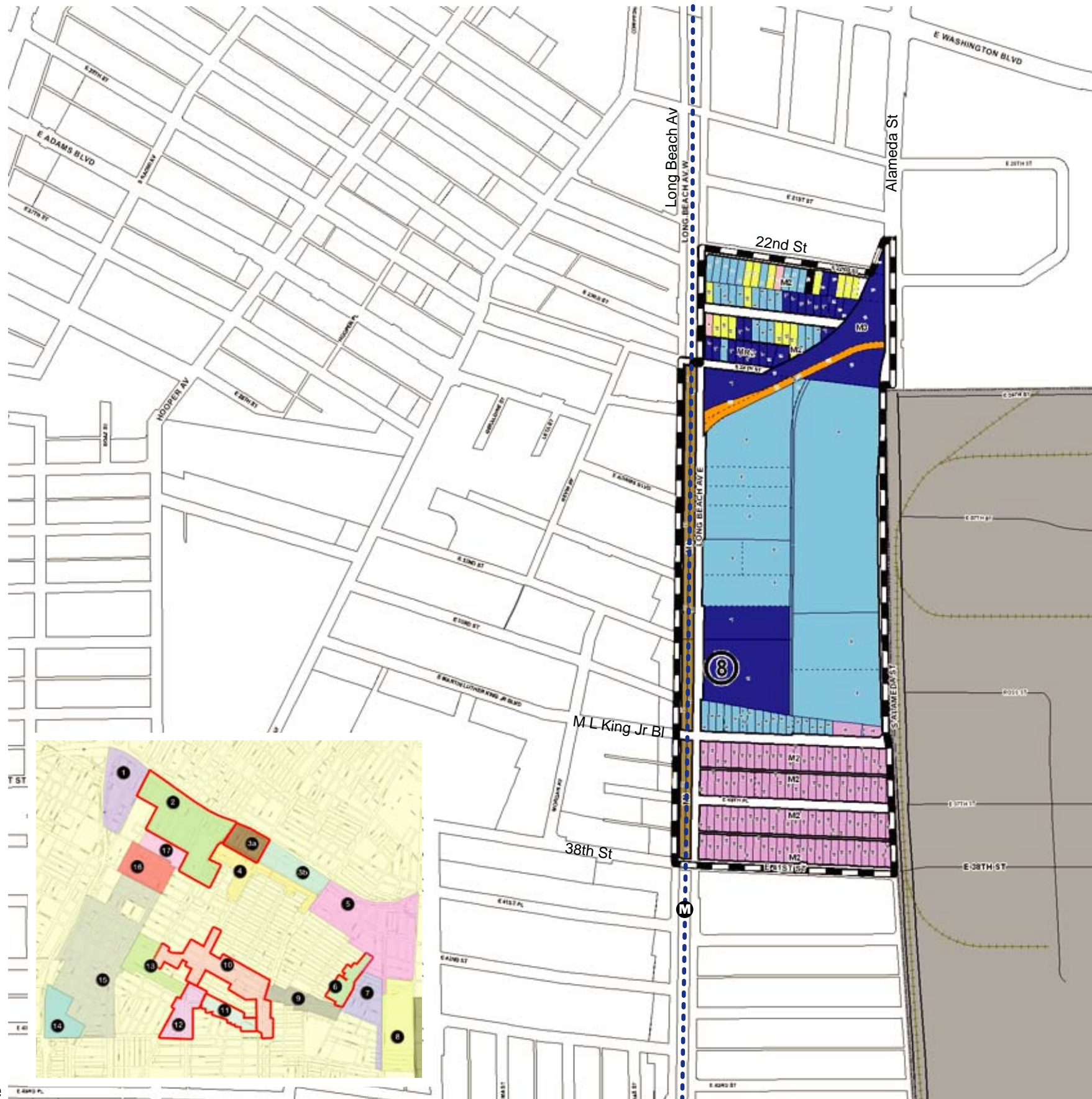
- Institutional
- Residential
- Parking
- Associated Parking
- Railroad
- Bridges / Streets / other ROWs

### Misc.

- Vacant
- Other
- Unknown

### Generalized Zoning

- Single Family, Agriculture
- Residential
- RAS
- Parking
- Commercial
- Industrial
- Misc
- OS
- PF
- City Boundary (PLN)
- Metro Blue Line
- Metro stop



map not to scale

### Top 5 Industries

- No. of Firms**
- Wholesale Trade 15
  - Manufacturing 9
  - Other Services 5
  - Misc Retail 3
  - Construction 2
  - All Others 15

### Total Jobs 763

Total Firms 49

### Top 5 Industries

- No. of Employees**
- Wholesale Trade 359
  - Manufacturing 205
  - Construction 50
  - Other Services 46
  - Real Estate 32
  - All Others 71

### Land Use

- Total Acres 64.5**
- Light Industrial 33.3 (52%)
  - Heavy Industrial 12.3 (19%)
  - Total Industrial 45.7 (71%)**
  - Residential 1.7 (3%)
  - Commercial 0.2 (0%)
  - Misc 16.9 (26%)

### Preliminary Recommendations

Preserve industrial zoning consistent with current community plan; allow industrial uses and ancillary commercial uses only. As part of Community Plan Program: recommend development of design guidelines to improve function and appearance of industrial uses; and identify and implement infrastructure plans and investment strategies to facilitate industrial uses.



# Southeast Los Angeles Industrial Area Analysis Area 9

## Survey Analysis Areas



### Land Uses as Surveyed Commercial

- Grocery / Liquor / Convenience
- Restaurant / Bar
- Commercial / Service / Office
- Retail - Community scale
- Retail - Regional scale
- Adult

### Industrial

- Research / Intellectual / Industry
- Light Industry
- Auto
- Storage (self)
- Storage (warehouse)
- Heavy Industrial and Manufacturing
- Entertainment / Production

### Infrastructure

- Institutional
- Residential
- Parking
- Associated Parking
- Railroad
- Bridges / Streets / other ROWs

### Misc.

- Vacant
- Other
- Unknown

### Generalized Zoning

- Single Family, Agriculture
- Residential
- RAS
- Parking
- Commercial
- Industrial
- Misc
- OS
- PF
- City Boundary (PLN)
- Metro Blue Line
- Metro stop



map not to scale

### Top 5 Industries No. of Firms

- Wholesale Trade 2
- Manufacturing 2
- Other Services 2
- Furniture 1
- Automotive 1
- All Others 6

**Total Jobs 108**  
**Total Firms 14**

### Top 5 Industries No. of Employees

- Manufacturing 43
- Wholesale Trade 30
- Other Services 22
- Apparel 6
- Furniture 4
- All Others 3

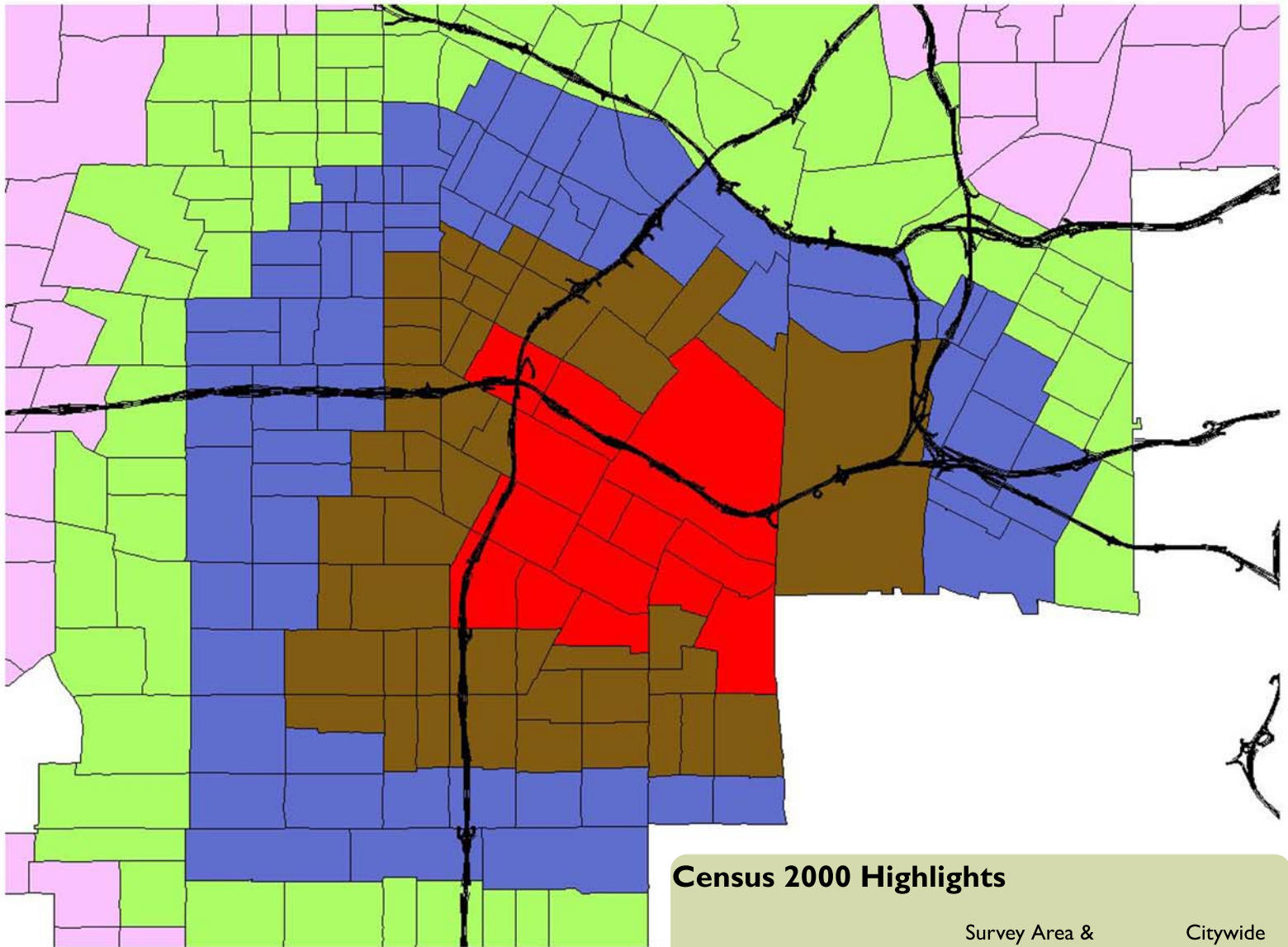
**Land Use**  
**Total Acres 23.9**  
Light Industrial 13.1 (55%)  
Heavy Industrial 3.6 (15%)  
**Total Industrial 16.7 (70%)**  
Residential 1.3 (6%)  
Commercial 0.5 (2%)  
Misc 5.4 (23%)

### Preliminary Recommendations

Preserve industrial zoning consistent with current community plan; allow industrial uses and ancillary commercial uses only. As part of Community Plan Program: recommend development of design guidelines to improve function and appearance of industrial uses; and identify and implement infrastructure plans and investment strategies to facilitate industrial uses.



# Southeast Los Angeles Demographic Data (2000 Census)



## Census 2000 Highlights

	Survey Area & 1 Mile Radius	Citywide
Housing Units Without Access to a Private Vehicle	26,147 (42%)	210,770 (17%)
Persons Over 25 With a High School Diploma or Less	94,386 (80%)	1,172,110 (51%)
Persons Employed in Manufacturing	20,894 (29%)	202,277 (13%)
Population Living Below the Poverty Line	92,920 (42%)	801,050 (22%)

-  Freeways
-  Survey and Intersecting Tracts\*
-  1 Mile Radius
-  2 Mile Radius
-  3 Mile Radius
-  Census 2000 Tracts

\* Includes Survey Area and Non-Industrial Zones





**Southeast LA Industrial Area Demographics for 2000**

	Survey and		1-Mile Radius*		2-Mile Radius*		3-Mile Radius*		City of Los Angeles	
	Intersecting Tracts		Count	Percent	Count	Percent	Count	Percent	Count	Percent
	Count	Percent	Count	Percent	Count	Percent	Count	Percent	Count	Percent
Total Population	55916		231213		530883		871716		3694834	
Total Working Outside the Home	16455		67692		162434		274710		1433200	
Transit, Bike or Walk to Work	6962	42	28332	42	62161	38	89630	33	214873	15
Commute Less Than 15 Minutes	3109	19	11918	18	24551	15	42446	15	270935	19
Commute 15-24 Minutes	4981	30	19557	29	45514	28	77940	28	424978	30
Commute 25-34 Minutes	4731	29	18730	28	45442	28	76782	28	349706	24
Commute 35-44 Minutes	812	5	4030	6	10143	6	18041	7	103391	7
Commute 45 Minutes or More	2822	17	13457	20	36784	23	59501	22	284190	20
Total Population 25 and Over	27800		118022		287828		494370		2308887	
High School Diploma or Less	24221	87	94386	80	221283	77	353507	72	1172110	51
Greater than High School Diploma	3579	13	23636	20	66545	23	140863	28	1136777	49
Employed Civilian Population 16 and Over	17288		71783		171312		289955		1532074	
Employed in Manufacturing	6897	40	20894	29	43593	25	61946	21	202277	13
Employed in Wholesale Trade	1271	7	4075	6	9295	5	14653	5	60691	4
Employed in Transportation and Warehousing	419	2	2433	3	6613	4	12034	4	55755	4
Total Household	12802		62617		151650		259555		1276609	
Households With Any Public Assistance	1959	15	9591	15	20193	13	31217	12	88017	7
Persons With Poverty Status Determined	54853		222170		516703		844288		3622606	
Living Below the Poverty Line	21259	39	92920	42	198198	38	295534	35	801050	22
100-200% of Poverty Line	20428	37	74011	33	173551	34	275125	33	878215	24
Living Above 200% of the Poverty Line	13166	24	55239	25	144954	28	273629	32	1943341	54
Occupied Housing Units	12791		62486		151456		259077		1275358	
With No Access to Private Vehicle	5113	40	26147	42	58834	39	87441	34	210770	17
With 1+ Vehicles	7678	60	36339	58	92622	61	171636	66	1064588	83
Source: Census 2000 Summary File 3, Sample data aggregated by census tracts for those tracts intersecting the Industrial Survey Area, and at 1, 2, and 3 mile radi from the Survey Area.										
* Radi are measured from the industrial zoned survey area. All totals are inclusive.										