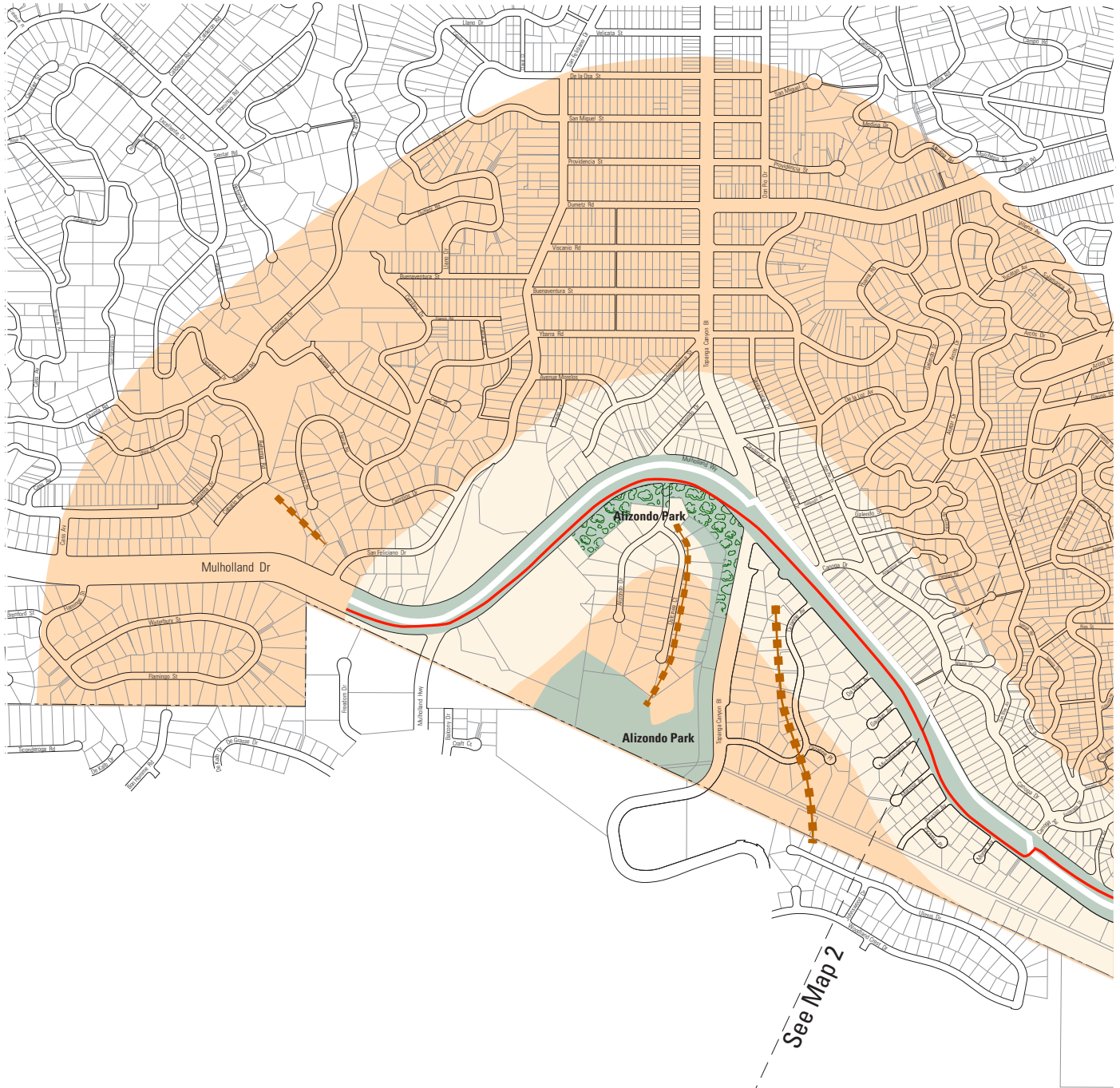


Mulholland Scenic Parkway Specific Plan



- Inner Corridor Overlay Zone**
500' from Right-of-Way
- Outer Corridor Overlay Zone**
500' to One-Half Mile from Right-of-Way
- Institutional Use Corridor**

- Publicly-Owned Open Space
- Roadway
- Public Parkland
- Prominent Ridge
- Watercourse

- Major Vista Point
- Core Trail
- Existing Trail, Fire, or Service Road
- Proposed Trail
- Organized Group Meeting Center
- Visitor's Center

Specific Plan Area: Map 1 of 12

Not to Scale