

EXISTING CONDITIONS



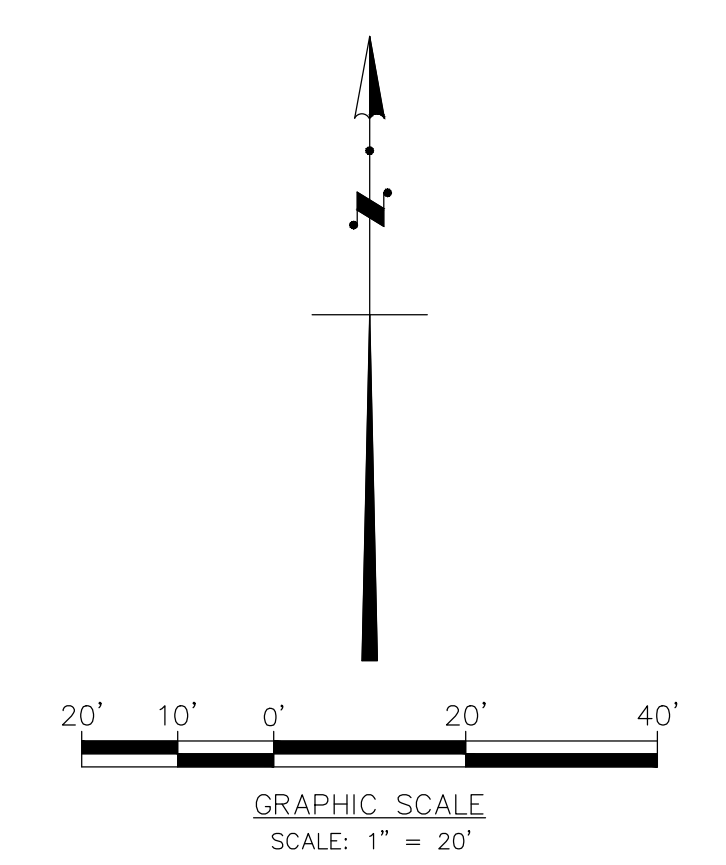
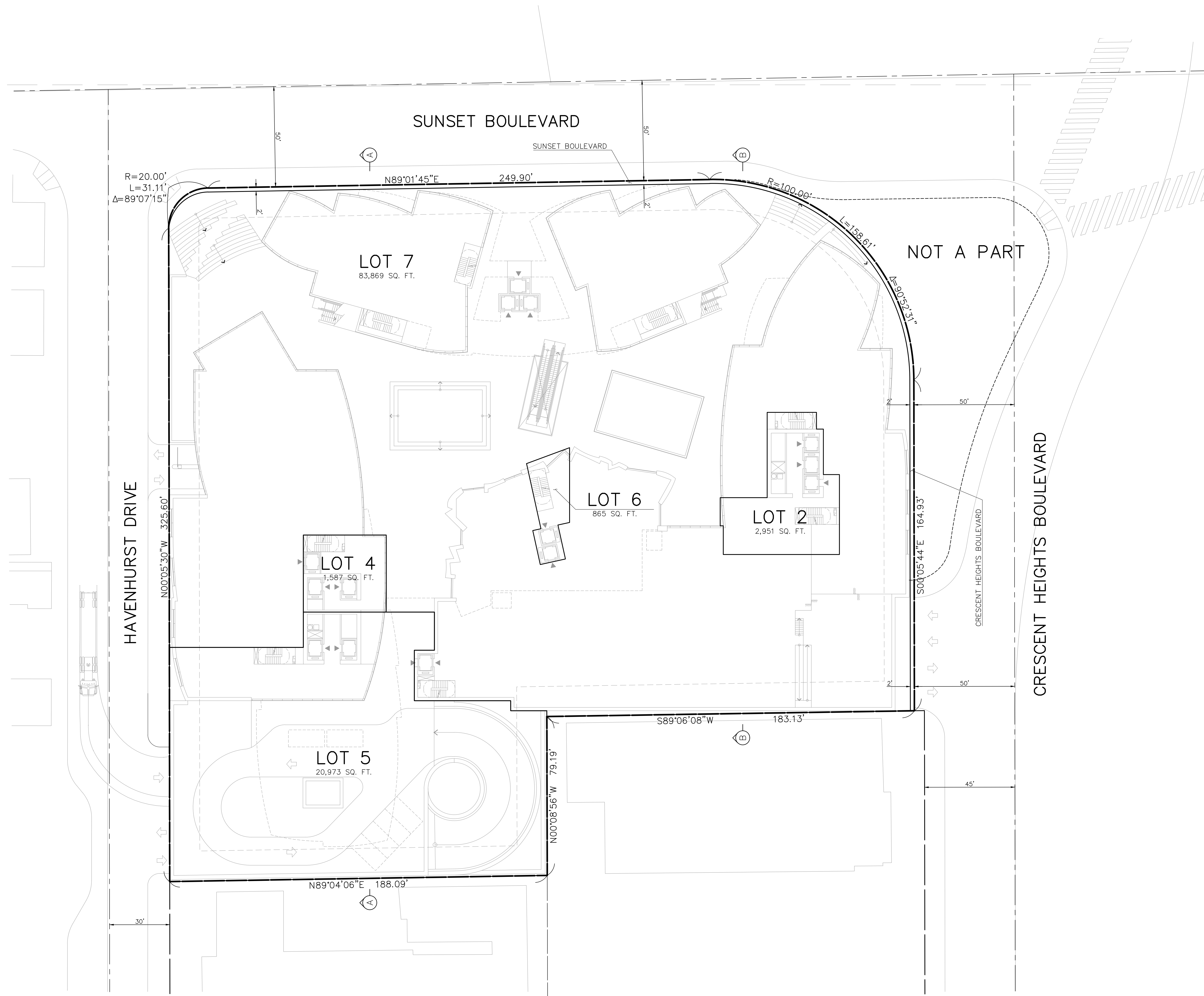
G.R.G.	▲				
G.R.G.	▲				
J.D.C.	▲	4/1/16	REVISED TENTATIVE LOTS	GRS	MJR

CITY OF LOS ANGELES BENCHMARK NO. 13-16551
 L.A. CITY PSM STAMPED "1987 13-16551"
 IN NE CORNER CB, N/O SUNSET BLVD., 27 FT.
 W/O HAVENHURST DR W. P/L PRODUCED
 403,648 FEET
 2000 ADJ. (NAVD88)

PSOMAS
 555 South Flower Street, Suite 4300
 Los Angeles, CA 90071
 (213) 223-1400 (213) 223-1444 fax
 www.psomas.com

VESTING TENTATIVE TRACT MAP FOR SUBDIVISION AND CONDOMINIUM PURPOSES:
VESTING TENTATIVE TRACT NO. 72370
 8150 SUNSET BOULEVARD
 IN THE CITY OF LOS ANGELES COUNTY OF LOS ANGELES STATE OF CALIFORNIA

SEPTEMBER 4, 2013	2
1" = 20'	7
11T060301	

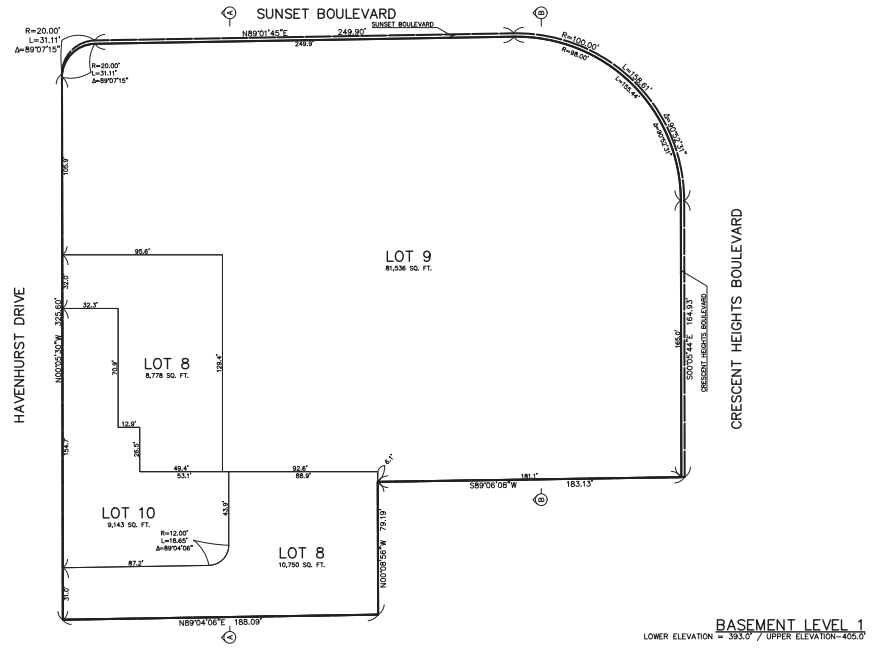
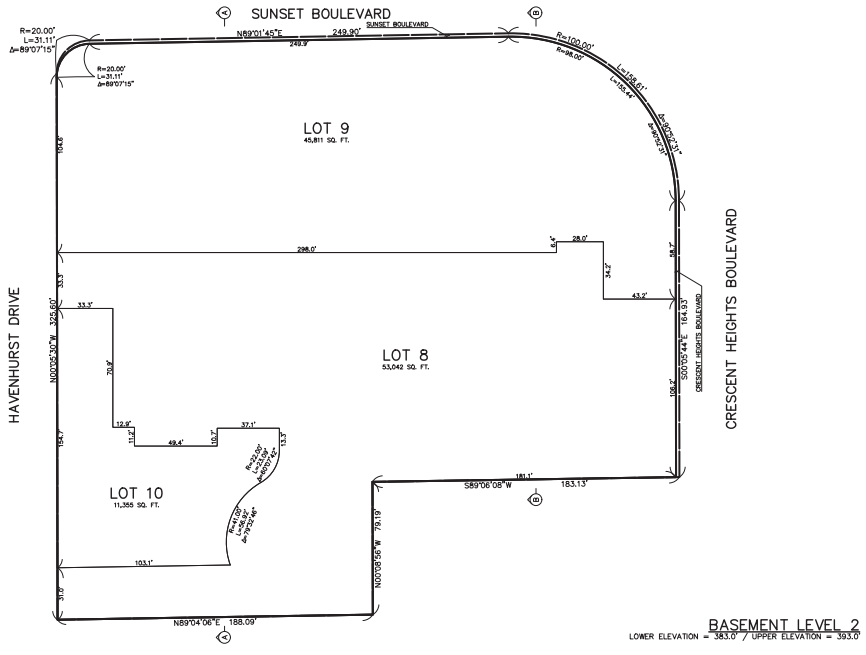
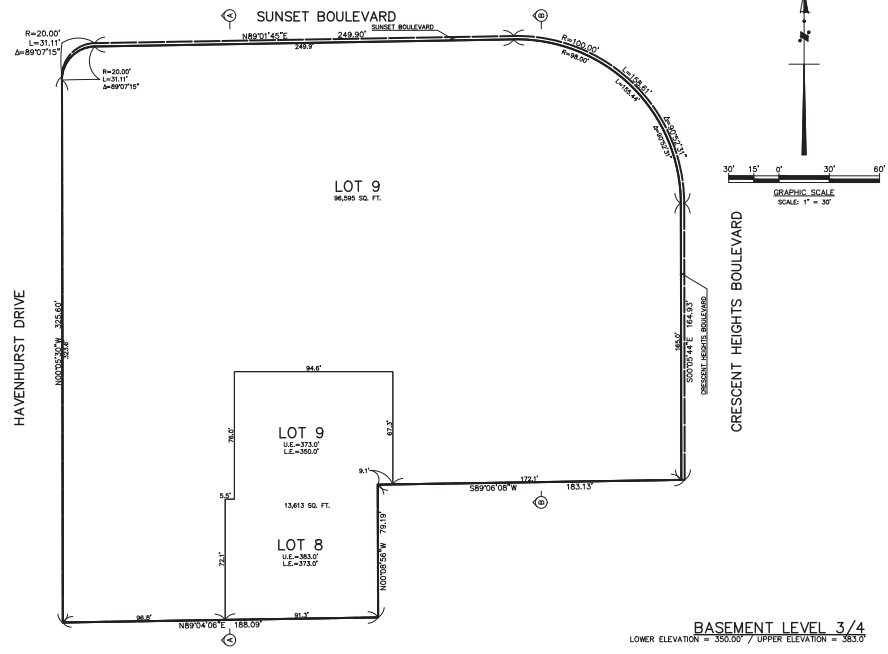
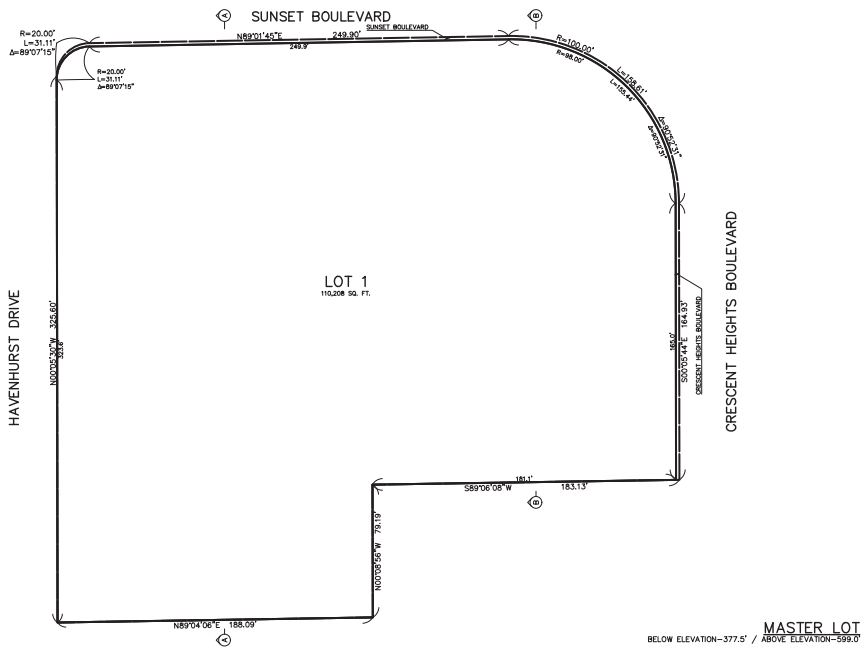


PROPOSED CONDITIONS

	DESIGNED	G. R. G.					PSOMAS 555 South Flower Street, Suite 4300 Los Angeles, CA 90071 (213) 223-1400 (213) 223-1444 fax www.psomas.com	VESTING TENTATIVE TRACT MAP FOR SUBDIVISION AND CONDOMINIUM PURPOSES: VESTING TENTATIVE TRACT NO. 72370 8150 SUNSET BOULEVARD IN THE CITY OF LOS ANGELES COUNTY OF LOS ANGELES STATE OF CALIFORNIA	DATE	SEPTEMBER 4, 2013	SHEET 3 OF 7
	DRAFTED	G. R. G.							SCALE	1" = 20'	
CHECKED	J. D. C.										
	REV	DATE	DESCRIPTION	GRG	MJR	APPD					

X:\B001\C-B001\2013-02-11_492_06_01

REF: 1TOW060100



G.R.G.	▲					
G.R.G.	▲					
J.D.C.	▲	4/1/16	REVISED TENTATIVE LOTS	GRS	MJR	

CITY OF LOS ANGELES BENCHMARK NO. 13-16551

L.A. CITY FORM STAMPED "1987 13-16551"
IN NE CORNER CB, N/O SUNSET BLVD., 27 FT.
W/O HAVENHURST DR W. P/L PRODUCED

PERMANENT RECORD 403,648 FEET 2000 ADJ. (NAV/D88)

PSOMAS

555 South Flower Street, Suite 4300
Los Angeles, CA 90071
(213) 223-1400 (213) 223-1444 fax
www.psomas.com

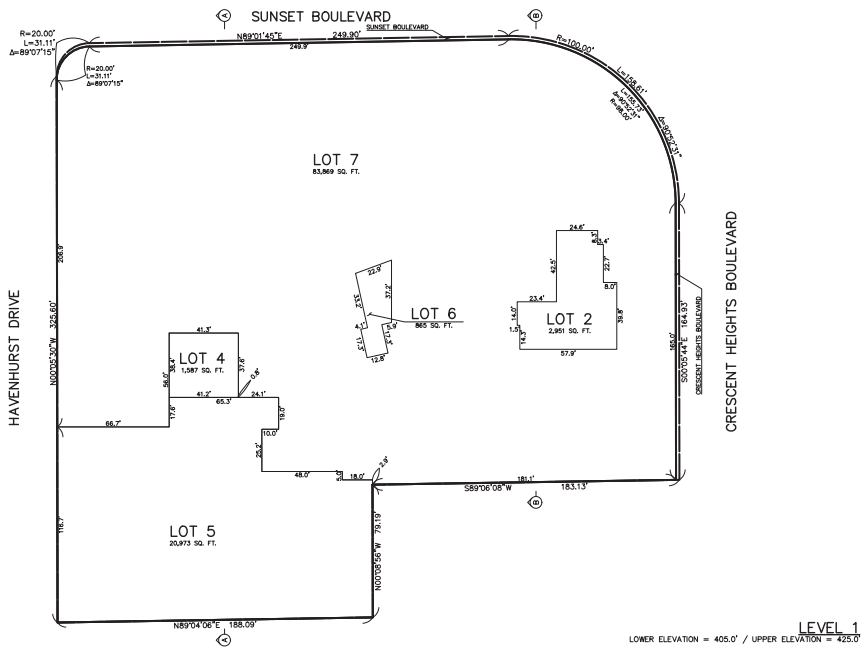
VESTING TENTATIVE TRACT MAP FOR SUBDIVISION AND CONDOMINIUM PURPOSES:

VESTING TENTATIVE TRACT NO. 72370
8150 SUNSET BOULEVARD

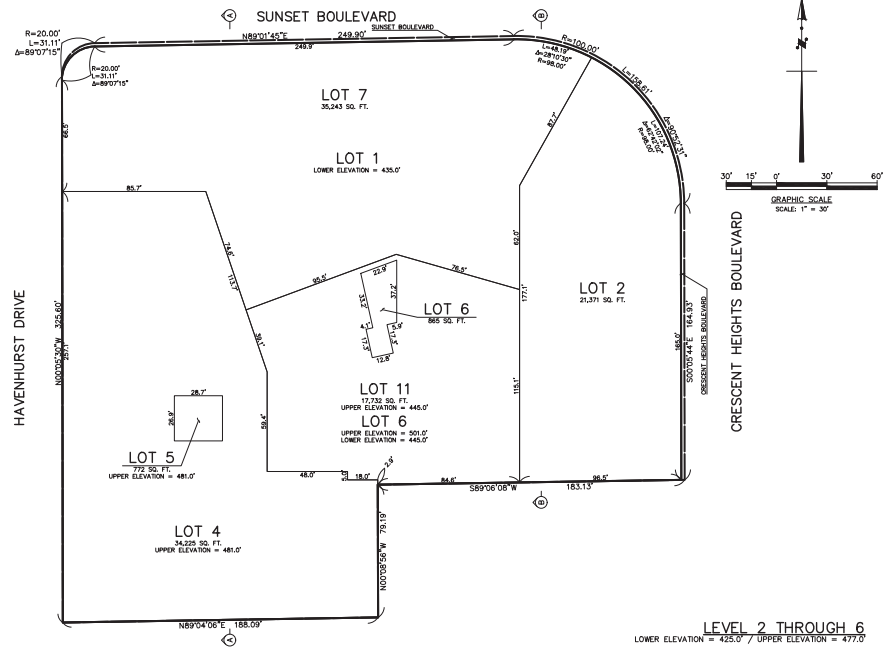
IN THE CITY OF LOS ANGELES COUNTY OF LOS ANGELES STATE OF CALIFORNIA

DATE: SEPTEMBER 4, 2013
SCALE: 1" = 30'
REF: 117060301

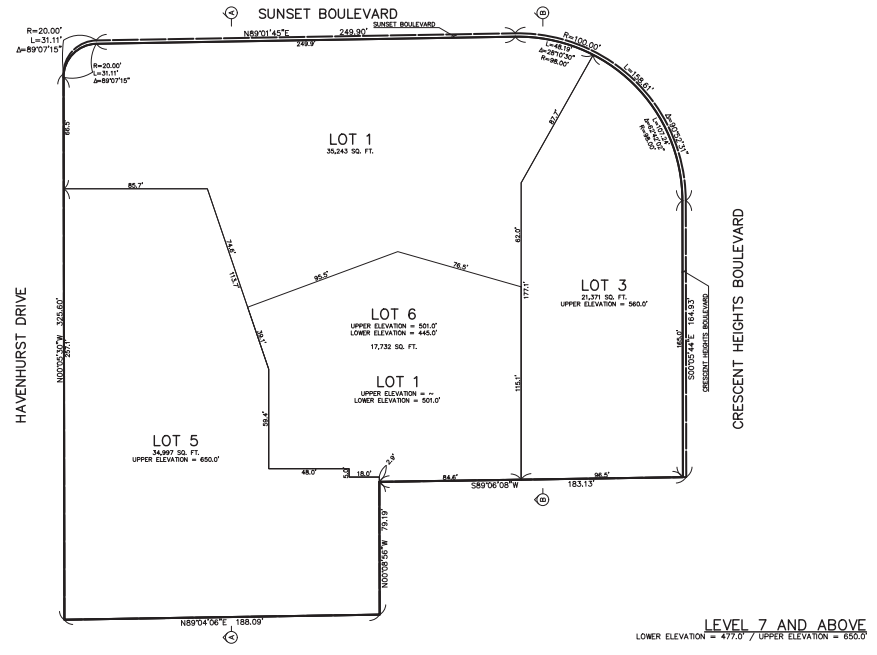
4
7



LEVEL 1
LOWER ELEVATION = 405.0' / UPPER ELEVATION = 425.0'



LEVEL 2 THROUGH 6
LOWER ELEVATION = 425.0' / UPPER ELEVATION = 477.0'



LEVEL 7 AND ABOVE
LOWER ELEVATION = 477.0' / UPPER ELEVATION = 550.0'

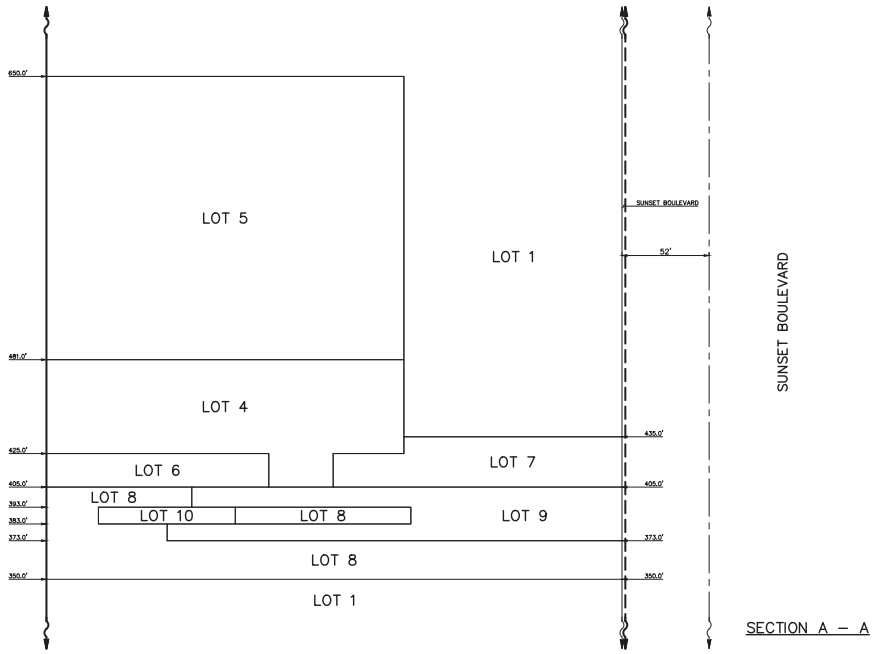


G.R.G.	▲								
G.R.G.	▲								
J.D.C.	▲								

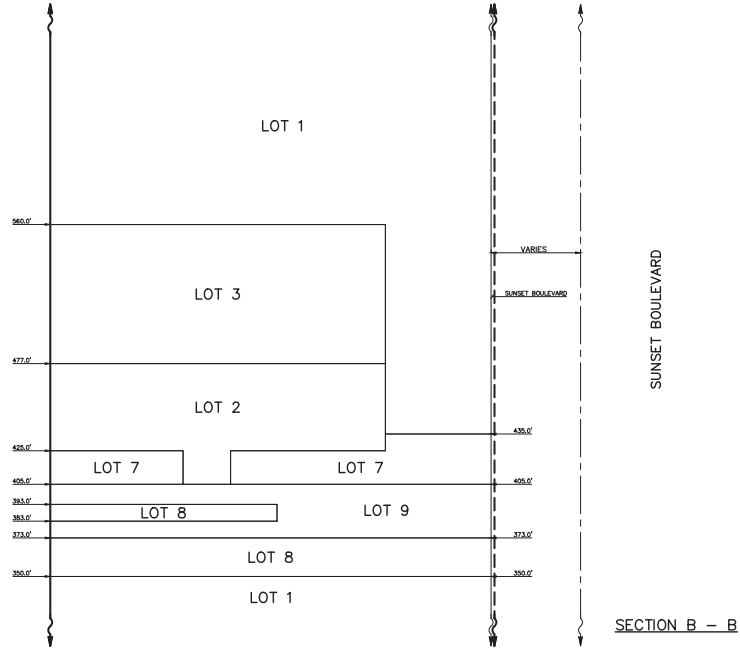
CITY OF LOS ANGELES BENCHMARK NO. 13-16551
L.A. CITY FORM STAMPED "1987 13-16551"
IN NE CORNER CB, N/O SUNSET BLVD., 27 FT.
W/O HAVENHURST DR W. P/L PRODUCED
403,648 FEET 2000 ADJ. (NAVDS8)

PSOMAS
555 South Flower Street, Suite 4300
Los Angeles, CA 90071
(213) 223-1400 (213) 223-1444 fax
www.psomas.com

VESTING TENTATIVE TRACT MAP FOR SUBDIVISION AND CONDOMINIUM PURPOSES:
VESTING TENTATIVE TRACT NO. 72370
8150 SUNSET BOULEVARD
IN THE CITY OF LOS ANGELES COUNTY OF LOS ANGELES STATE OF CALIFORNIA
SEPTEMBER 4, 2013
1" = 30'
1170W060301
5
7
REF: 1170W060100



SECTION A - A



SECTION B - B



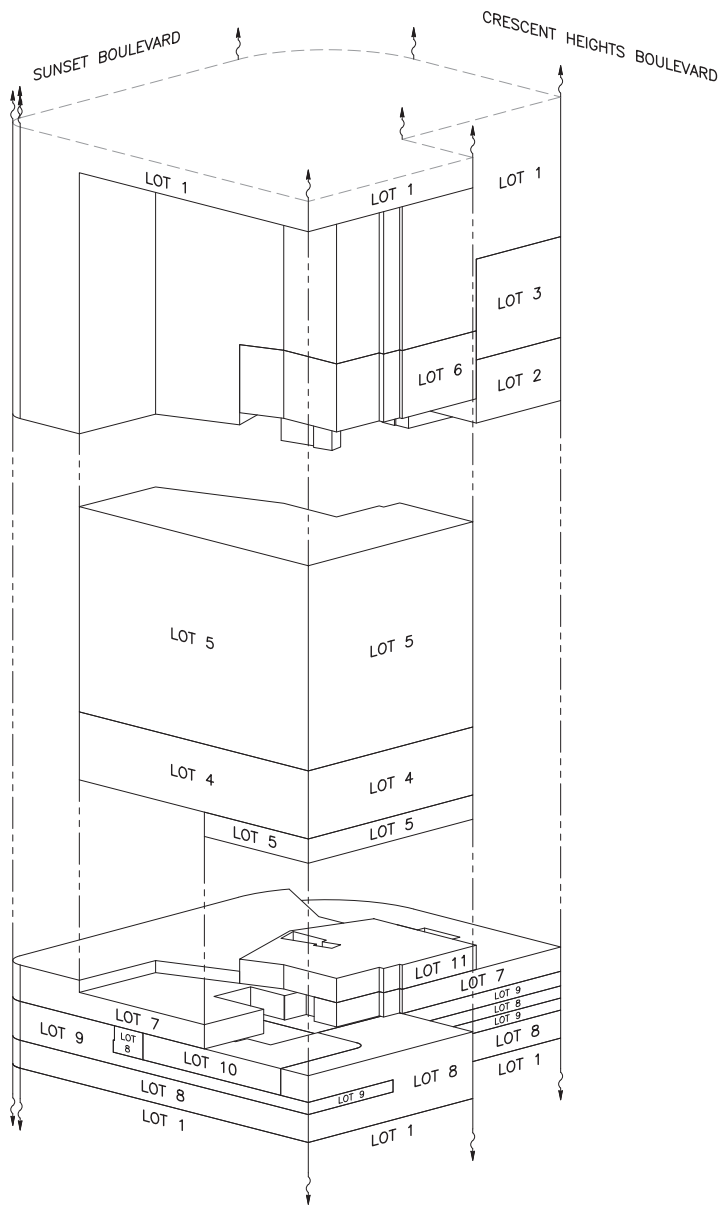
G.R.G.	▲								
G.R.G.	▲								
J.D.C.	▲	4/1/16	REVISED TENTATIVE LOTS	GRG	MJR				

CITY OF LOS ANGELES BENCHMARK NO. 13-16551
 L.A. CITY PGM STAMPED "1987 13-16551"
 IN NE CORNER CB, N/O SUNSET BLVD., 27 FT.
 W/O HAVENHURST DR W. P/L PRODUCED
 403,648 FEET
 2000 ADJ. (NAVD88)

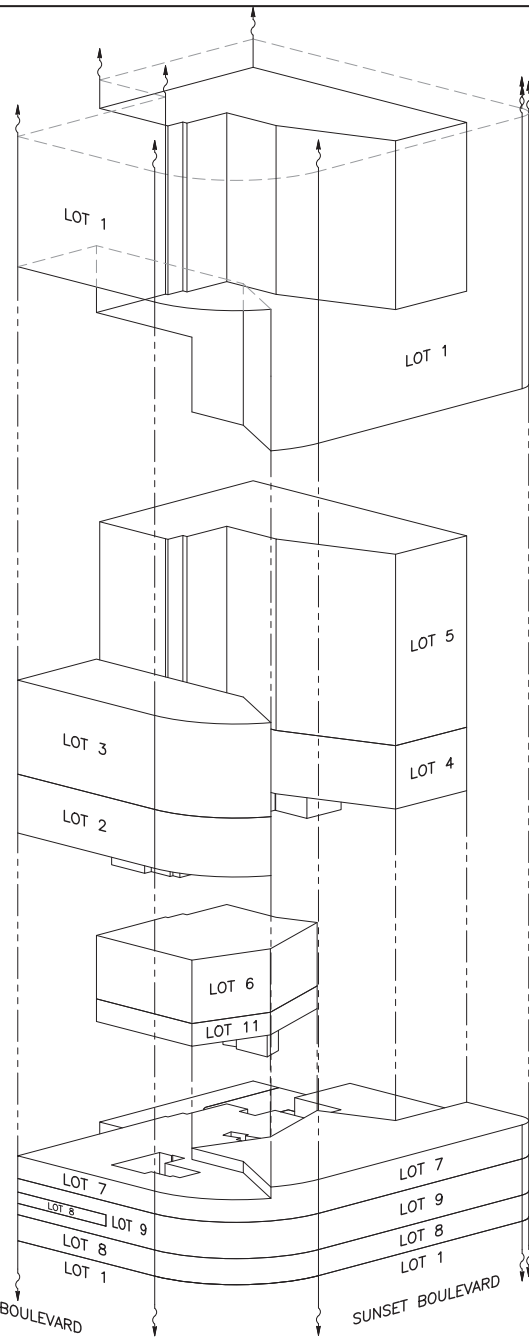


VESTING TENTATIVE TRACT MAP FOR SUBDIVISION AND CONDOMINIUM PURPOSES:
VESTING TENTATIVE TRACT NO. 72370
 8150 SUNSET BOULEVARD
 IN THE CITY OF LOS ANGELES COUNTY OF LOS ANGELES STATE OF CALIFORNIA

SEPTEMBER 4, 2013
 1" = 30'
 1170W060301
 6
 7
 REF: 1170W060100



SOUTHWEST ISOMETRIC



NORTHEAST ISOMETRIC



G.R.G.	▲								
G.R.G.	▲								
J.D.C.	▲	4/1/16	REVISED TENTATIVE LOTS	GRS	MJR				

CITY OF LOS ANGELES BENCHMARK NO. 13-16551
 L.A. CITY FORM STAMPED "1987 13-16551"
 IN NE CORNER CB, N/O SUNSET BLVD., 27 FT.
 W/O HAVENHURST DR W. P/L PRODUCED
 403,648 FEET 2000 ADJ. (NAVDR8)

PSOMAS
 555 South Flower Street, Suite 4300
 Los Angeles, CA 90071
 (213) 223-1400 (213) 223-1444 fax
 www.psomas.com

VESTING TENTATIVE TRACT MAP FOR SUBDIVISION AND CONDOMINIUM PURPOSES:
VESTING TENTATIVE TRACT NO. 72370
 8150 SUNSET BOULEVARD
 IN THE CITY OF LOS ANGELES COUNTY OF LOS ANGELES STATE OF CALIFORNIA

SEPTEMBER 4, 2013
 1" = 30'
 1170W060301
 7
 7
 REF: 1170W060100