

CANYON HILLS

City of Los Angeles | California

L E G E N D

- Oaks**
- 8" - 17" DBH*
 - 18" - 35" DBH*
 - ≥ 36 DBH*
- Sycamores**
- 12" - 17" DBH*
 - 18" - 35" DBH*
 - ≥ 36 DBH*

* Trunk Diameter at Breast Height

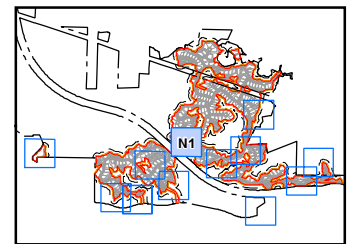
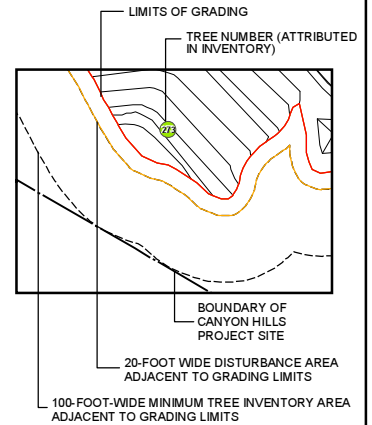
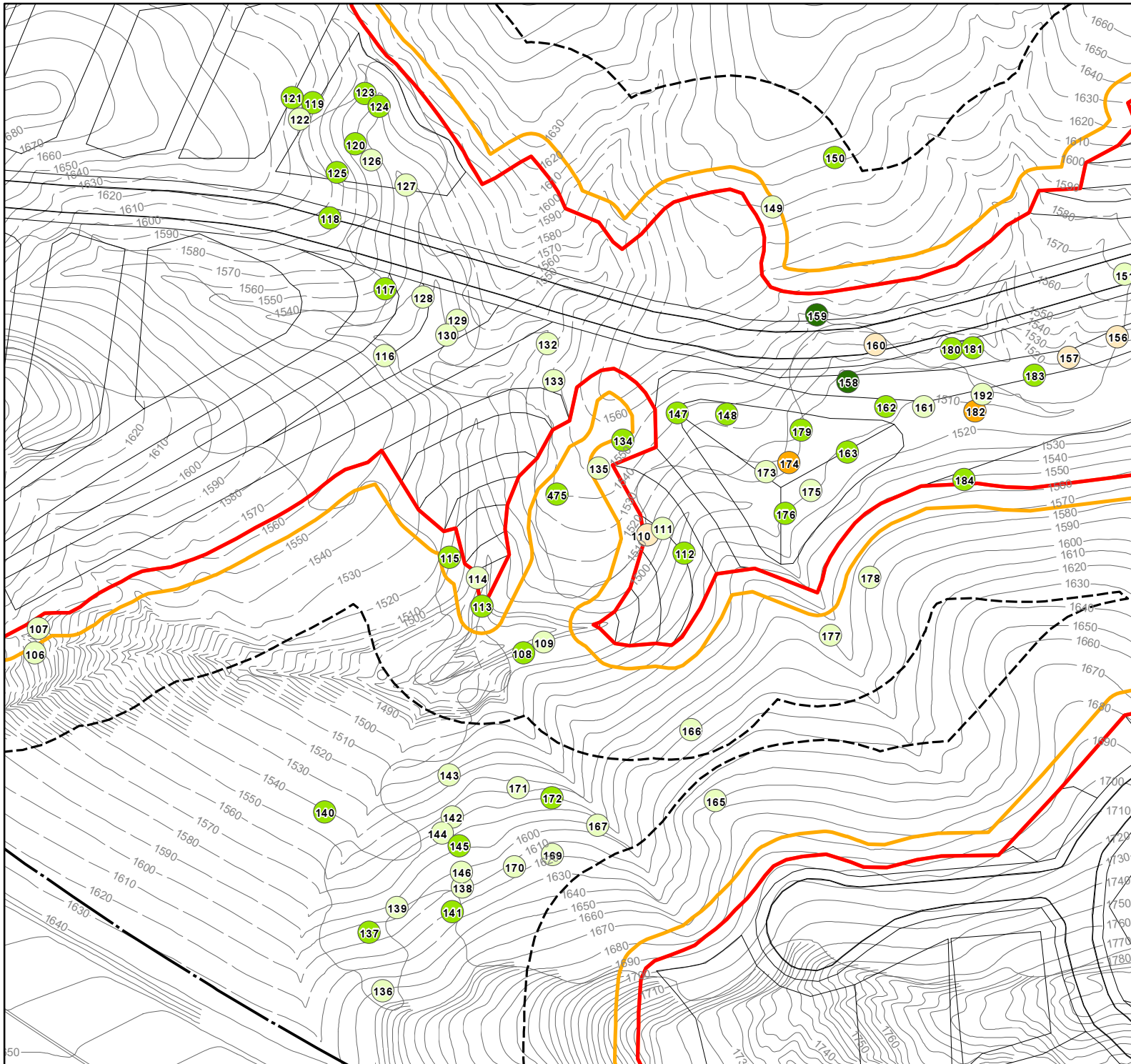


EXHIBIT 4a N1 TREE DETAIL





CANYON HILLS

City of Los Angeles | California

L E G E N D

- Oaks**
- 8" - 17" DBH*
 - 18" - 35" DBH*
 - ≥ 36 DBH*
- Sycamores**
- 12" - 17" DBH*
 - 18" - 35" DBH*
 - ≥ 36 DBH*

* Trunk Diameter at Breast Height

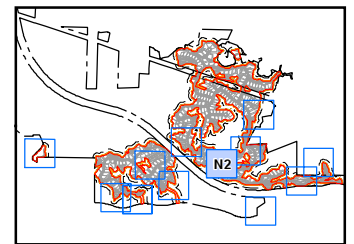
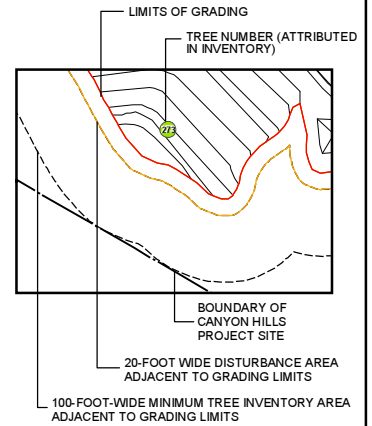
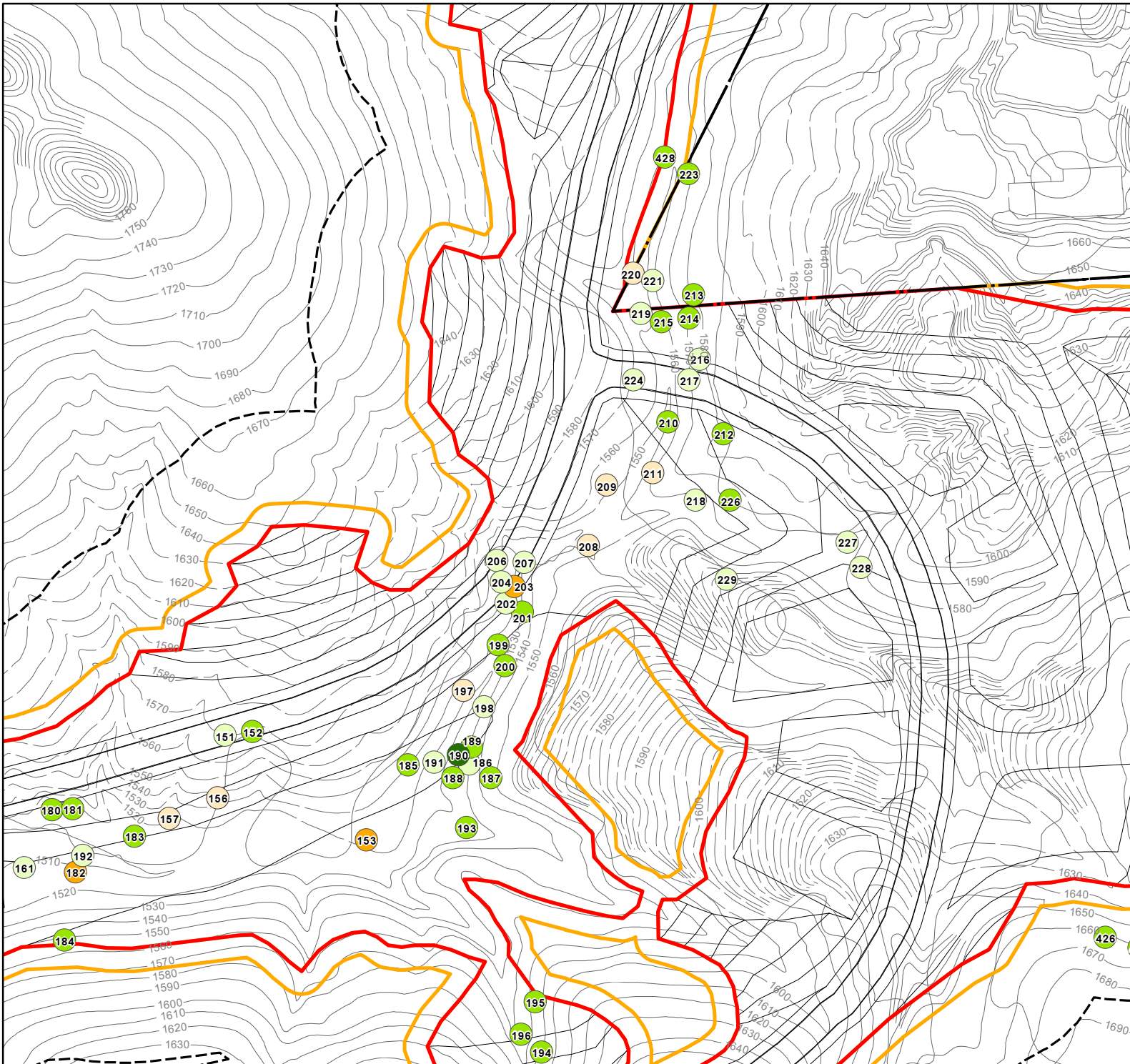


EXHIBIT 4b N2 TREE DETAIL





CANYON HILLS

City of Los Angeles | California

L E G E N D

- Oaks**
- 8" - 17" DBH*
 - 18" - 35" DBH*
 - ≥ 36 DBH*
- Sycamores**
- 12" - 17" DBH*
 - 18" - 35" DBH*
 - ≥ 36 DBH*

* Trunk Diameter at Breast Height

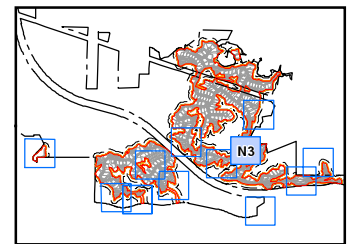
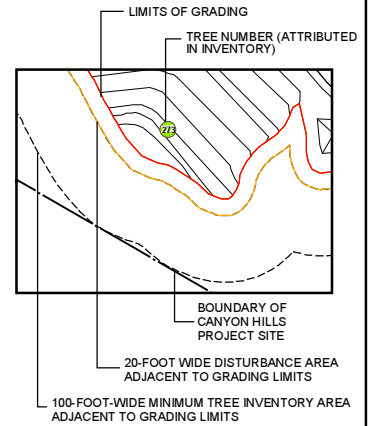
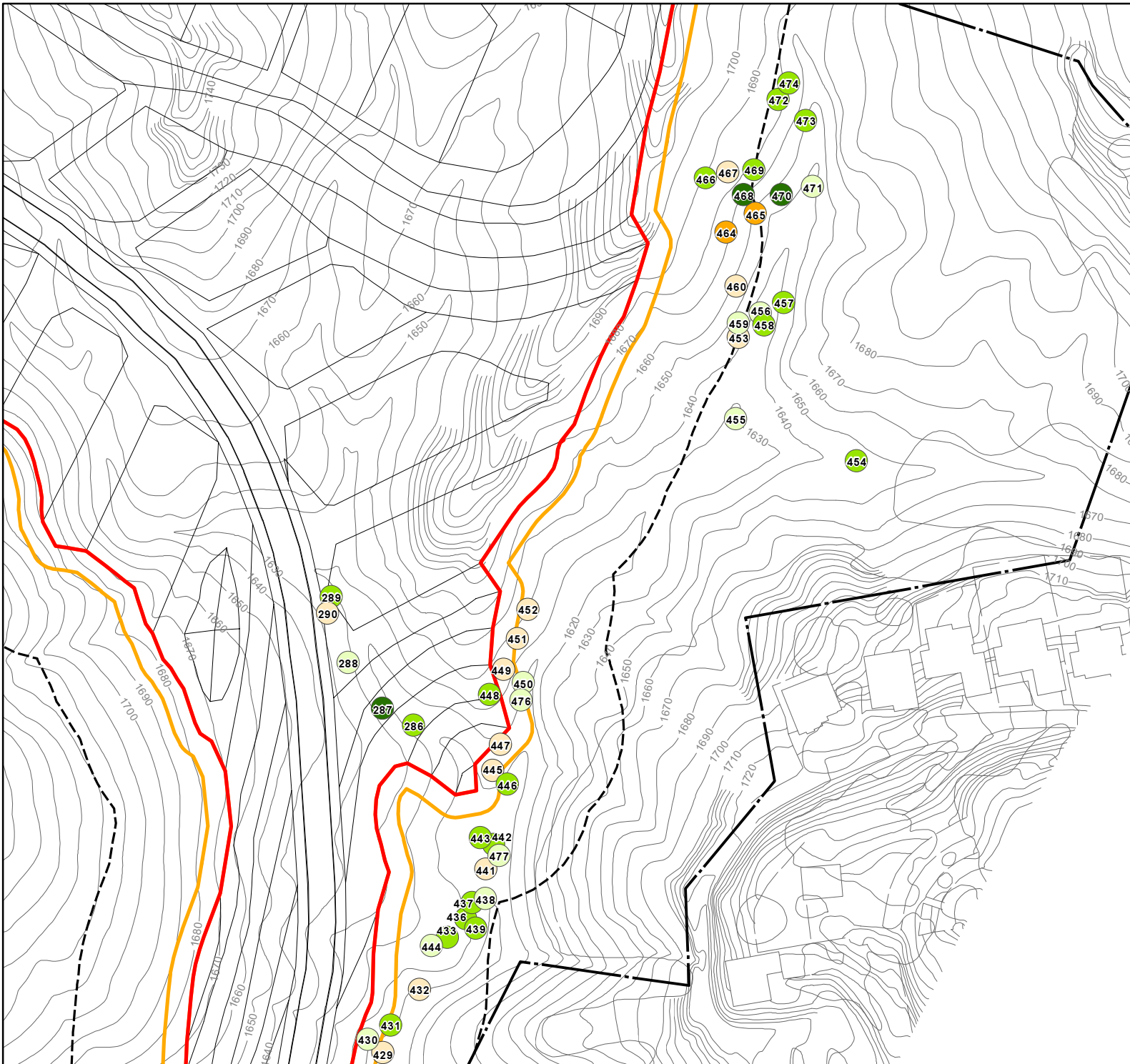


EXHIBIT 4c N3 TREE DETAIL





CANYON HILLS

City of Los Angeles | California

L E G E N D

- Oaks**
- 8" - 17" DBH*
 - 18" - 35" DBH*
 - ≥ 36 DBH*
- Sycamores**
- 12" - 17" DBH*
 - 18" - 35" DBH*
 - ≥ 36 DBH*

* Trunk Diameter at Breast Height

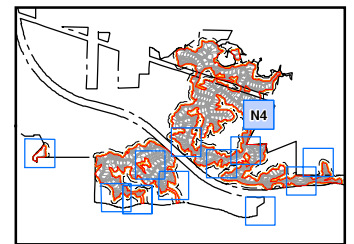
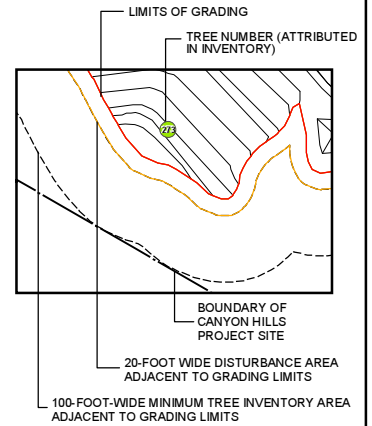
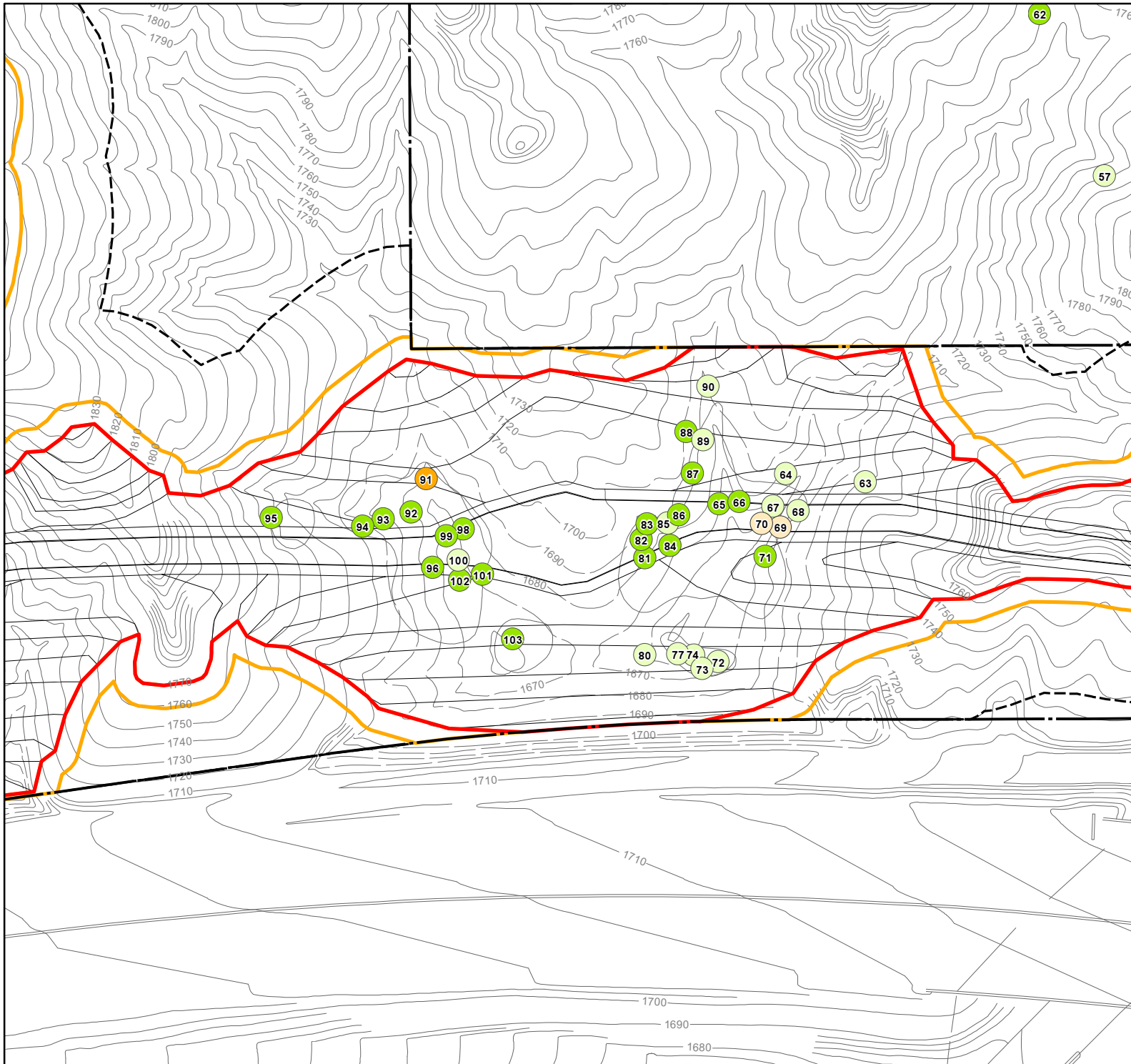


EXHIBIT 4d
N4 TREE DETAIL





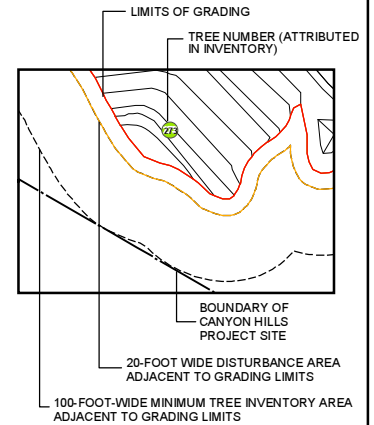
CANYON HILLS

City of Los Angeles | California

L E G E N D

- Oaks**
- 8" - 17" DBH*
 - 18" - 35" DBH*
 - ≥ 36 DBH*
- Sycamores**
- 12" - 17" DBH*
 - 18" - 35" DBH*
 - ≥ 36 DBH*

* Trunk Diameter at Breast Height



NOTE:
No Grading is proposed by the Canyon Hills project for the equestrian park.

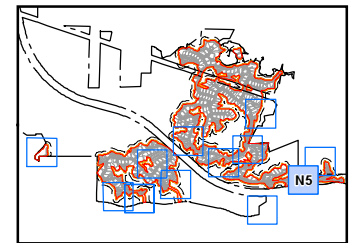
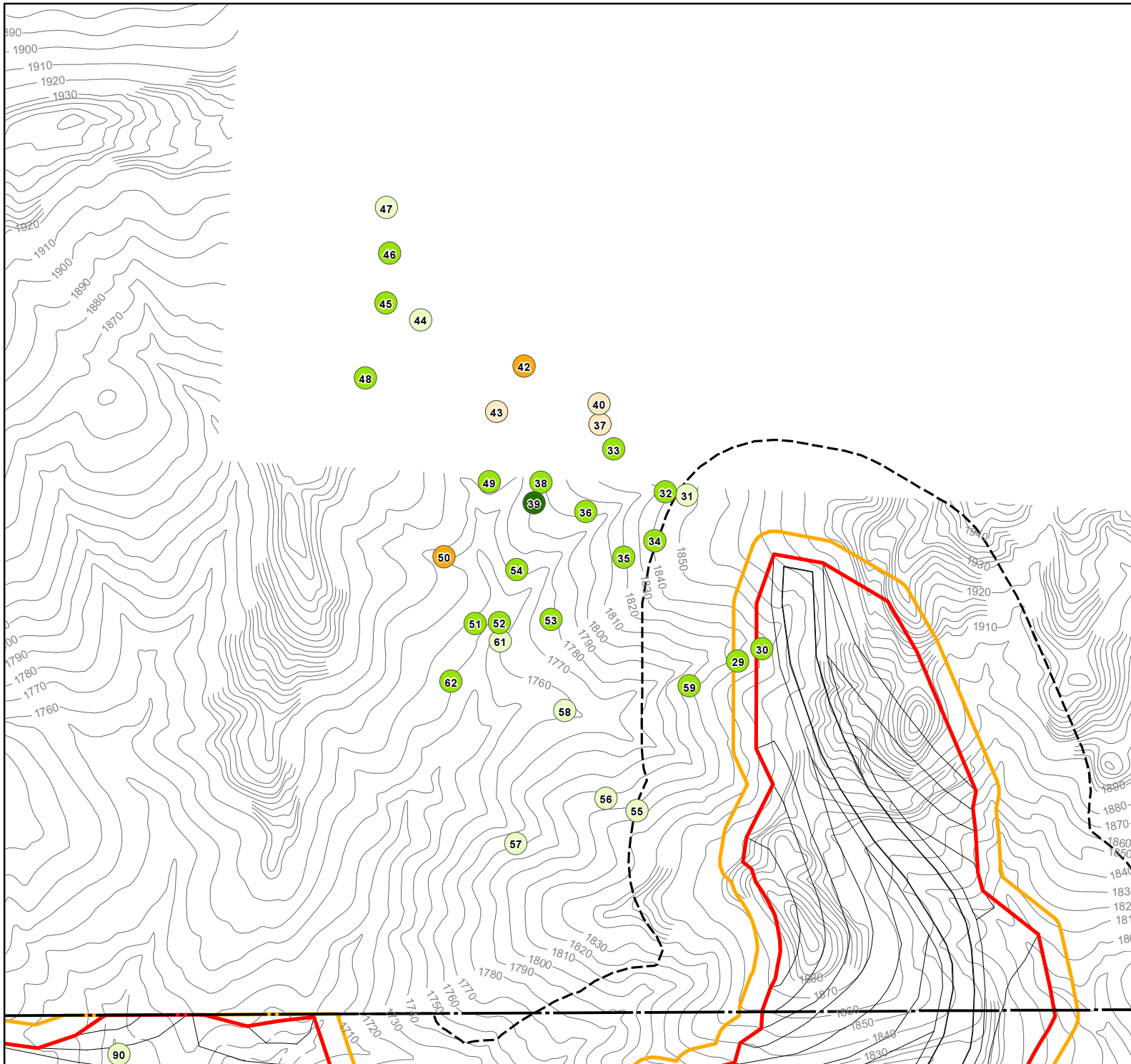


EXHIBIT 4e N5 TREE DETAIL





CANYON HILLS

City of Los Angeles | California

L E G E N D

- Oaks**
- 8" - 17" DBH*
 - 18" - 35" DBH*
 - ≥ 36 DBH*
- Sycamores**
- 12" - 17" DBH*
 - 18" - 35" DBH*
 - ≥ 36 DBH*

* Trunk Diameter at Breast Height

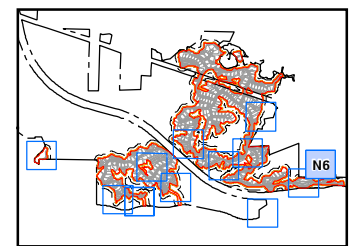
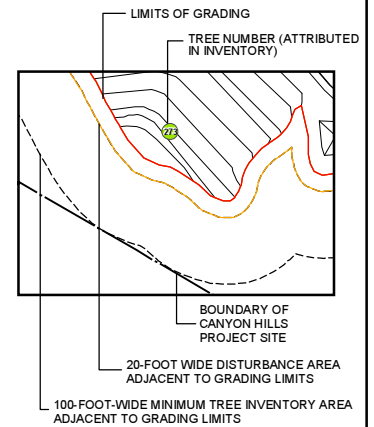
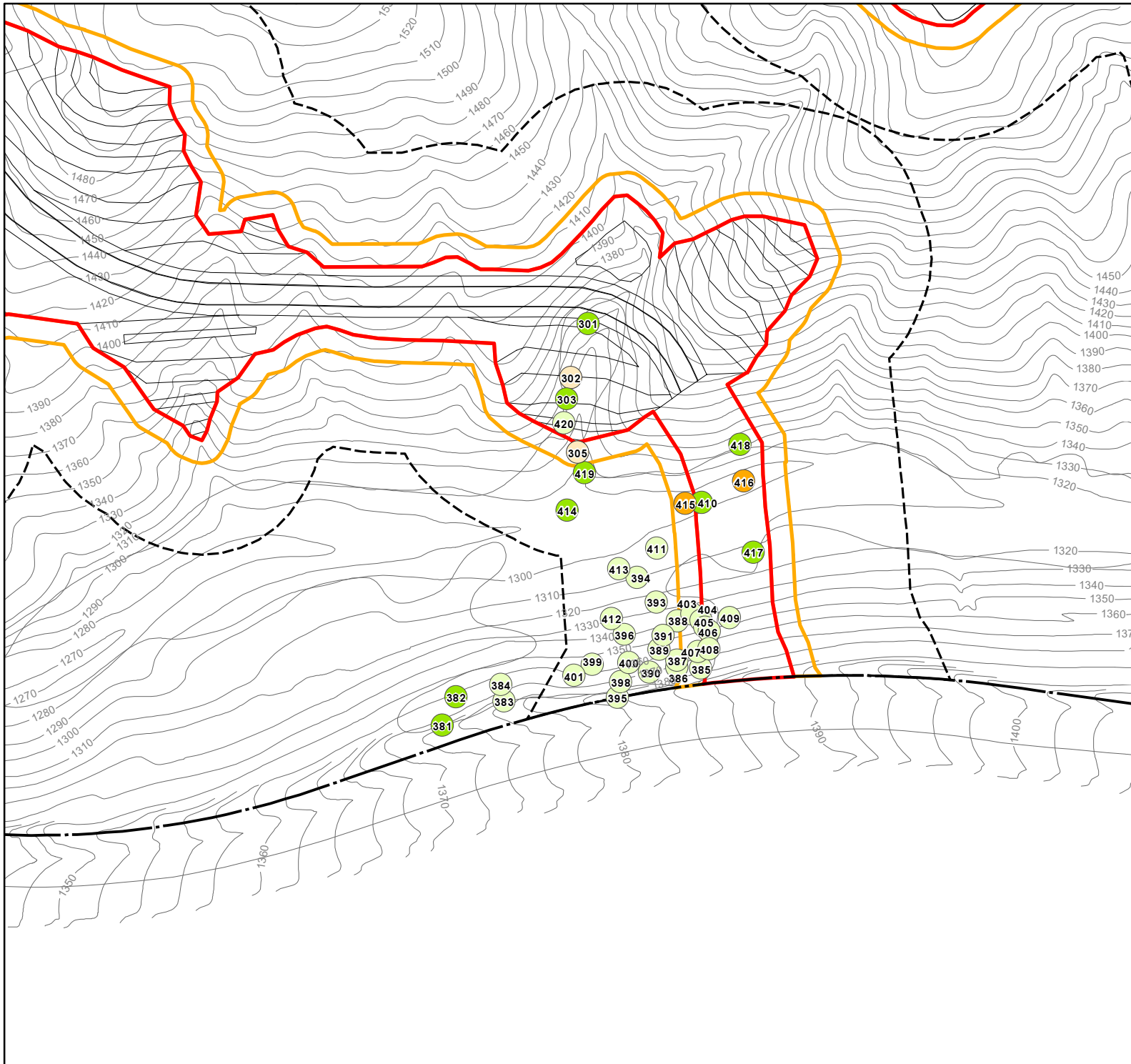


EXHIBIT 4f N6 TREE DETAIL





CANYON HILLS

City of Los Angeles | California

L E G E N D

- Oaks**
- 8" - 17" DBH*
 - 18" - 35" DBH*
 - ≥ 36" DBH*
- Sycamores**
- 12" - 17" DBH*
 - 18" - 35" DBH*
 - ≥ 36" DBH*

* Trunk Diameter at Breast Height

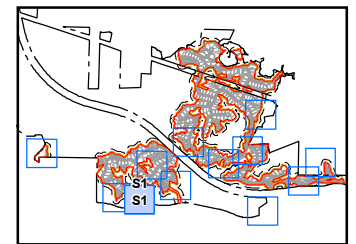
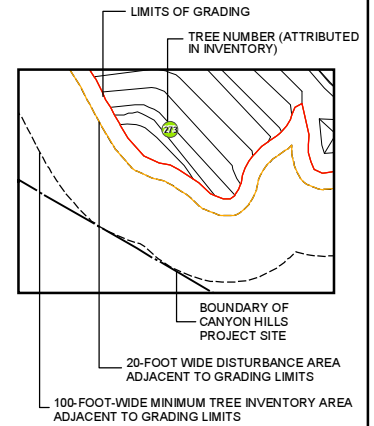
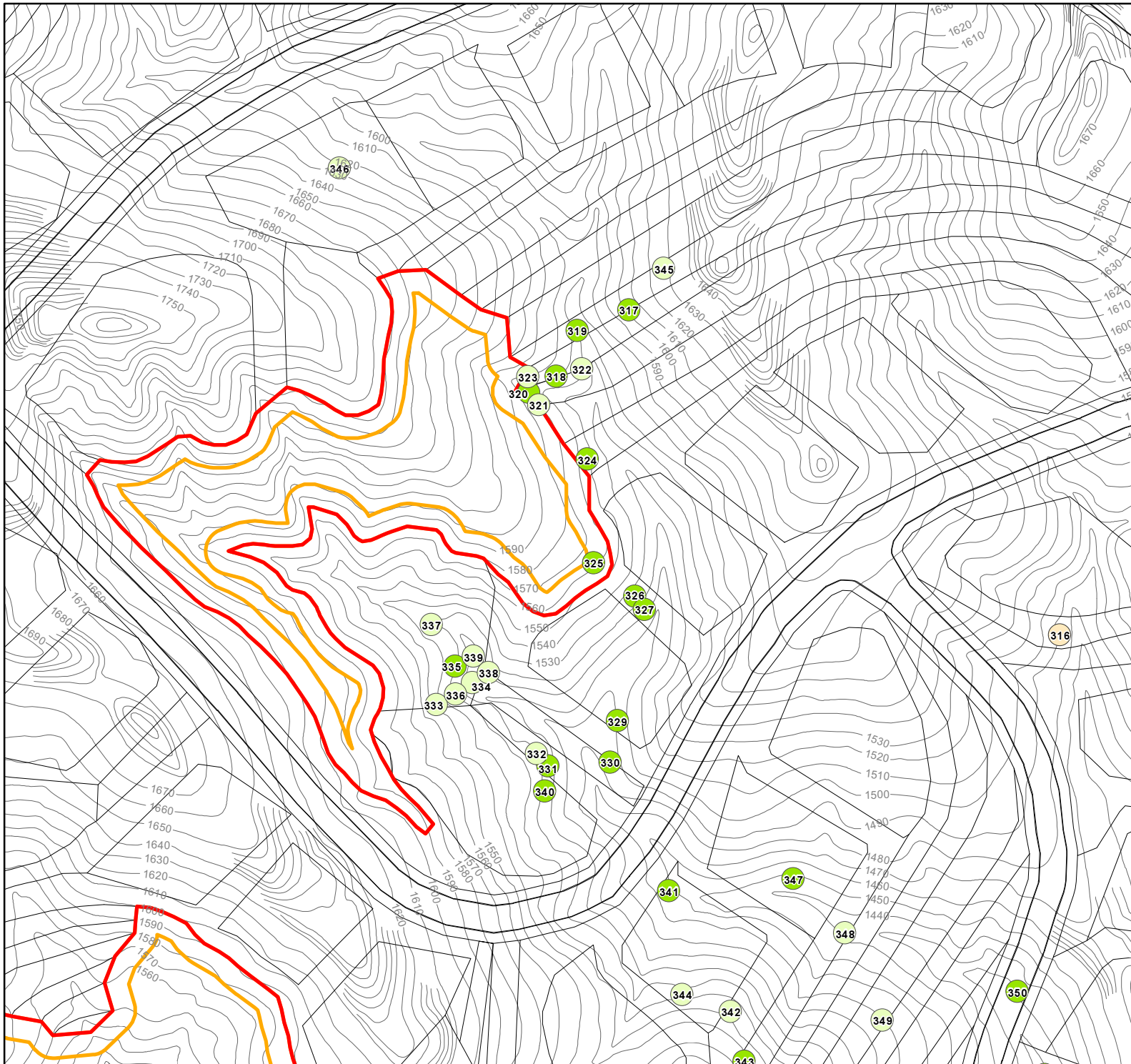


EXHIBIT 4g S1 TREE DETAIL





CANYON HILLS

City of Los Angeles | California

L E G E N D

- Oaks**
- 8" - 17" DBH*
 - 18" - 35" DBH*
 - ≥ 36 DBH*
- Sycamores**
- 12" - 17" DBH*
 - 18" - 35" DBH*
 - ≥ 36 DBH*

* Trunk Diameter at Breast Height

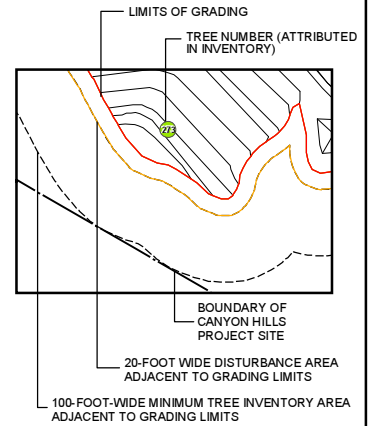
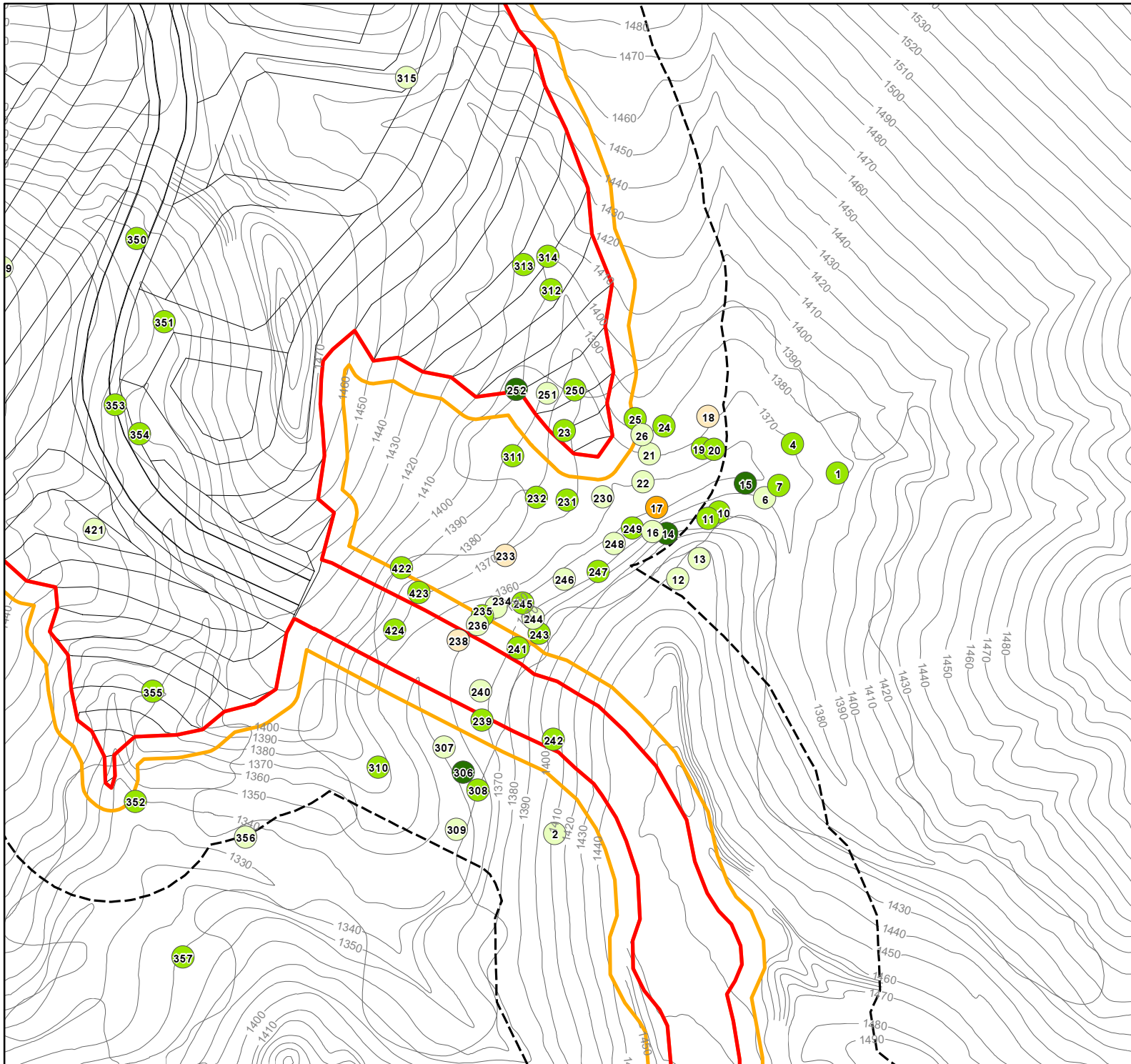


EXHIBIT 4h S2 TREE DETAIL





CANYON HILLS

City of Los Angeles | California

L E G E N D

- Oaks**
- 8" - 17" DBH*
 - 18" - 35" DBH*
 - ≥ 36 DBH*
- Sycamores**
- 12" - 17" DBH*
 - 18" - 35" DBH*
 - ≥ 36 DBH*

* Trunk Diameter at Breast Height

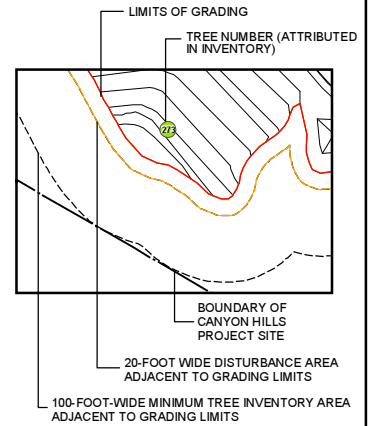


EXHIBIT 4I S3 TREE DETAIL





CANYON HILLS

City of Los Angeles | California

L E G E N D

- Oaks**
- 8" - 17" DBH*
 - 18" - 35" DBH*
 - ≥ 36 DBH*
- Sycamores**
- 12" - 17" DBH*
 - 18" - 35" DBH*
 - ≥ 36 DBH*

* Trunk Diameter at Breast Height

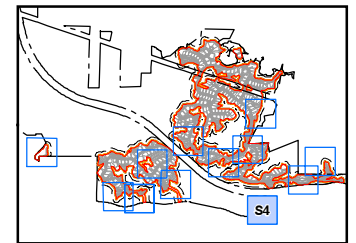
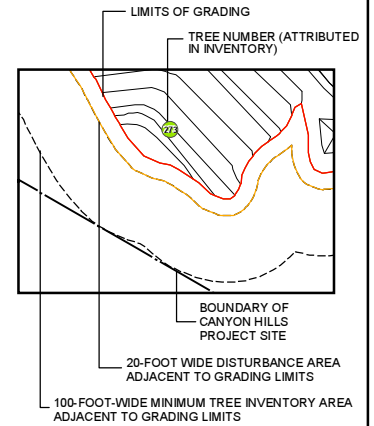
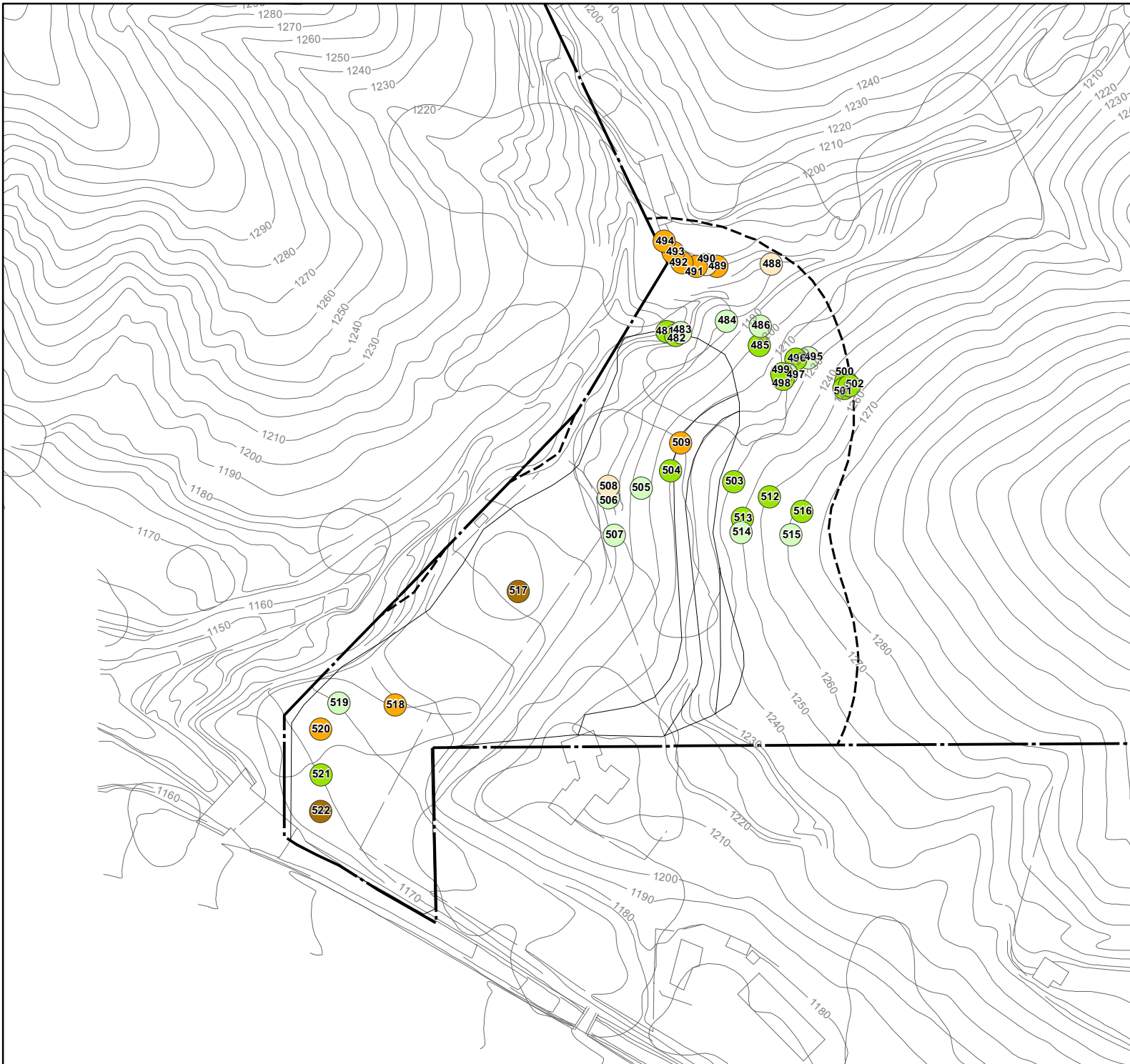


EXHIBIT 4j S4 TREE DETAIL





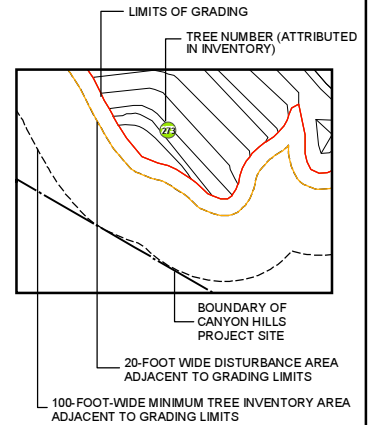
CANYON HILLS

City of Los Angeles | California

L E G E N D

- Oaks**
- 8" - 17" DBH*
 - 18" - 35" DBH*
 - ≥ 36 DBH*
- Sycamores**
- 12" - 17" DBH*
 - 18" - 35" DBH*
 - ≥ 36 DBH*

* Trunk Diameter at Breast Height



NOTE:
No Grading is proposed by the Canyon Hills project for the equestrian park.

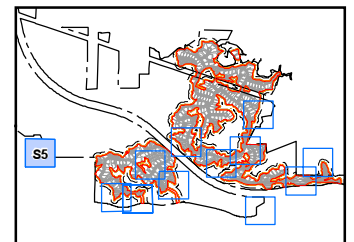
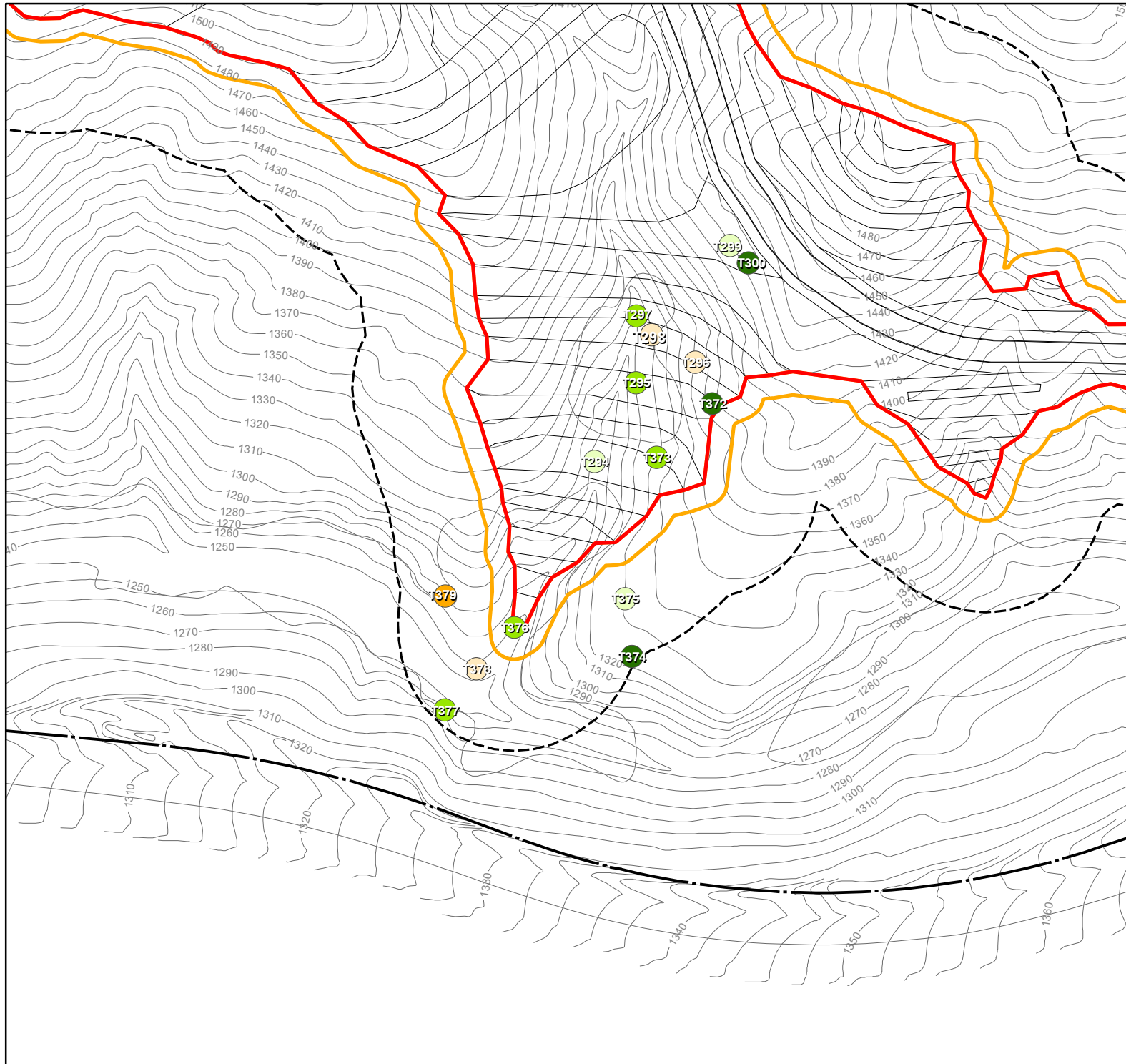


EXHIBIT 4k
S5 TREE DETAIL











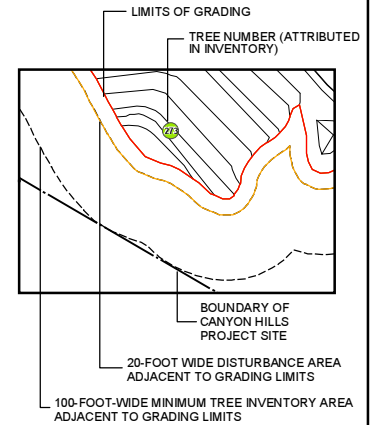
CANYON HILLS

City of Los Angeles | California

L E G E N D

- Oaks**
-  8" - 17" DBH*
 -  18" - 35" DBH*
 -  ≥ 36" DBH*
- Sycamores**
-  12" - 17" DBH*
 -  18" - 35" DBH*
 -  ≥ 36" DBH*

* Trunk Diameter at Breast Height



NOTE:
No Grading is proposed by the Canyon Hills project for the equestrian park.



EXHIBIT 41 S6 TREE DETAIL

