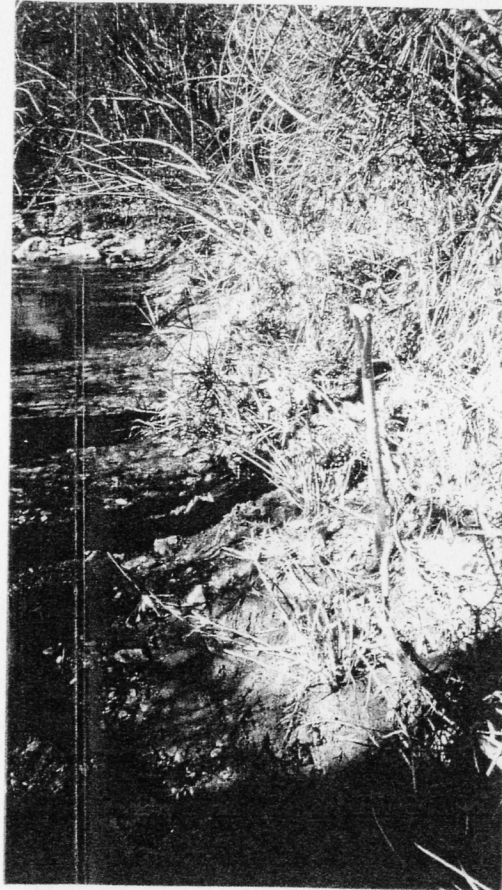


**Photograph 1.** Drainage 2 supports coast live, arroyo willow, mule fat, and white alder.



**Photograph 2.** A small "strip" wetland totaling 400 square feet (.009 acre) was found adjacent to the OHWM west of Tributary 2.8. This wetland was dominated by non-native umbrella sedge (*Cyperus involucreatus*, FACW).



GLENN LUKOS ASSOCIATES

EXHIBIT 4

**CANYON HILLS**

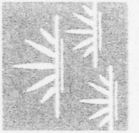
Photographs



Photograph 3. Looking North up the drainage



Photograph 4. Looking northwest up Tributary 4 37.



GLENN LUKOS ASSOCIATES

EXHIBIT 4

**CANYON HILLS**

Photographs



Photograph 5. Looking northwest up Tributary 4 37



Photograph 6. The main drainage and tributaries 4.5 and 4.9 contained flowing water at the time of the delineation field-work.



GLENN LUKOS ASSOCIATES  
EXHIBIT 4

**CANYON HILLS**  
Photographs



Photograph 7. Beginning at the confluence with Tributary 4.5, Drainage 4 exhibit surface water flow, which continued to the culvert that extends beneath Interstate 210



Photograph 8. Drainage 5 traverses areas dominated by upland shrubs including laurel sumac, chamise, black sage, California buckwheat, hoaryleaf ceanothus, and coast live oak



GLENN LUKOS ASSOCIATES

EXHIBIT 4

**CANYON HILLS**

Photographs



Photograph 9. Looking northwest down channel



Photograph 10. Looking up Tributary 5.6 in a northwesterly direction.



Photograph 11. Looking down on Drainage 5 at the Coast Live Oak Riparian Forest.



GLENN LUKOS ASSOCIATES  
EXHIBIT 4

**CANYON HILLS**  
Photographs



Photograph 12. Looking northeast up the main drainage.



Photograph 13. Looking northeast up the main drainage



GLENN LUKOS ASSOCIATES

EXHIBIT 4

**CANYON HILLS**

Photographs



Photograph 14. Looking northeast up Drainage 18.



Photograph 15. Looking northwest up a non-jurisdictional feature associated with Drainage 18 that traverses areas dominated by chamise, black sage, lemonadeberry, California buckwheat, and hoaryleaf ceanothus.



GLENN LUKOS ASSOCIATES

EXHIBIT 4

**CANYON HILLS**

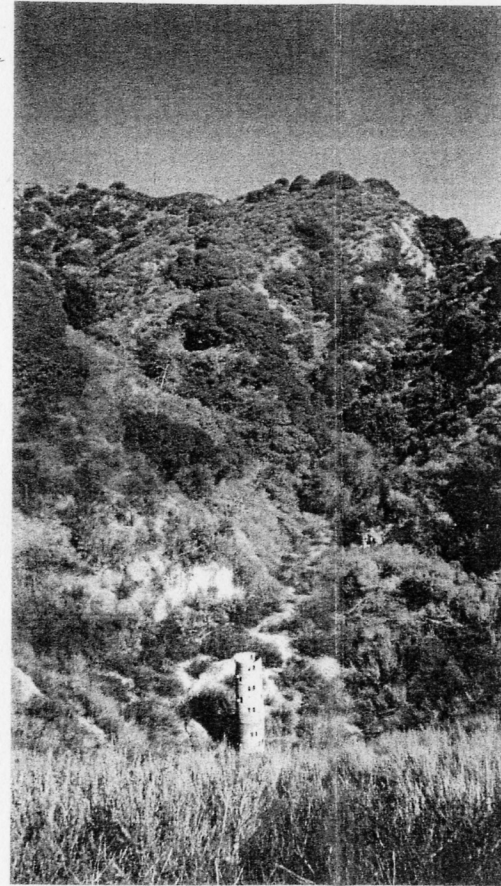
Photographs



**Photograph 16.** Looking northeast up Drainage 19. California sagebrush, laurel sumac, California buckwheat, lemonadeberry, and skunkbrush.



**Photograph 17.** Drainage 22 traverses areas dominated by upland shrubs such as laurel sumac, California buckwheat, hoaryleaf ceanothus, chamise, and black sage.



**Photograph 18.** Drainage 23 traverses areas dominated by upland shrubs such as laurel sumac, California buckwheat, hoaryleaf ceanothus, chamise, and black sage. A four-foot stand pipe is located at the end of the drainage.



GLENN LUKOS ASSOCIATES

EXHIBIT 4

**CANYON HILLS**

Photographs