

**APPENDIX A
FAUNAL COMPENDIA
INTRODUCTION TO FAUNAL SURVEY**

Vertebrates identified in the field by sight, calls, tracks, scat, or other signs are cited according to the nomenclature of Collins (1997) for amphibians and reptiles, AOU (1998) for birds, and Jones et al. (1992) for mammals.

FAUNAL COMPENDIUM¹

LEGEND

STATUS

- + Presence of animals noted by direct sighting, call identification or observation of tracks, scat or other signs. Species without “+” are likely to occur on site.
- * Non-native

TERRESTRIAL VERTEBRATES

AMPHIBIANS

PLETHODONTIDAE - LUNGLESS SALAMANDERS

- Ensatina eschscholtzi*
ensatina
- Aneides lugubris*
arboreal salamander
- Batrachoseps nigriventris*
black-bellied slender salamander
- Batrachoseps pacificus*
Pacific slender salamander

BUFONIDAE - TRUE TOADS

- + *Bufo boreas*
western toad

HYLIDAE - TREEFROGS

1

List includes species observed or expected to occur on or in the immediate vicinity of the site.

- + *Pseudacris regilla*
Pacific treefrog

REPTILES

GEKKONIDAE - GECKOS

- Coleonyx variegatus*
San Diego banded gecko

IGUANIDAE - IGUANID LIZARDS

- + *Sceloporus occidentalis*
western fence lizard
- + *Uta stansburiana*
side-blotched lizard
- Phrynosoma coronatum*
coast horned lizard

SCINCIDAE - SKINKS

- + *Eumeces skiltonianus*
western skink
- Eumeces gilberti*
Gilbert skink

TEIIDAE - WHIPTAIL LIZARDS

- + *Cnemidophorus tigris*
western whiptail
- Cnemidophorus hyperythrus*
orange-throated whiptail

ANGUIDAE - ALLIGATOR LIZARDS

- + *Gerrhonotus multicarinatus*
southern alligator lizard

ANNIELLIDAE - CALIFORNIA LEGLESS LIZARDS

- Anniella pulchra*
California legless lizard

LEPTOTYPHLOPIDAE - SLENDER BLIND SNAKES

- Leptotyphlops humilis*
western blind snake

BOIDAE - PYTHONS AND BOAS

Lichanura trivirgata
rosy boa

COLUBRIDAE - COLUBRID SNAKES

- + *Diadophis punctatus*
ringneck snake
- Coluber constrictor*
racer
- Masticophis flagellum*
coachwhip
- Masticophis lateralis*
California whipsnake
- Salvadora hexalepis*
western patch-nosed snake
- Arizona elegans*
glossy snake
- + *Pituophis melanoleucus*
gopher snake
- Lampropeltis getulus*
common kingsnake
- Thamnophis hammondi*
two-striped garter snake
- Thamnophis sirtalis*
common garter snake
- Tantilla planiceps*
California black-headed snake
- Trimorphodon biscutatus*
lyre snake
- Hypsiglena torquata*
night snake

VIPERIDAE - VIPERS

- + *Crotalus viridis*
western rattlesnake
- Crotalus michtelli*
speckled rattlesnake

BIRDS

CATHARTIDAE - NEW WORLD VULTURES

- + *Cathartes aura*

turkey vulture

ACCIPITRIDAE - HAWKS, KITES, EAGLES

- + *Elanus leucurus*
white-tailed kite
- Circus cyaneus*
northern harrier
- Accipiter striatus*
sharp-shinned hawk
- + *Accipiter cooperii*
Cooper's hawk
- + *Buteo jamaicensis*
red-tailed hawk
- + *Buteo lineatus*
red-shouldered hawk

FALCONIDAE - FALCONS

- + *Falco sparverius*
American kestrel
- Falco columbarius*
merlin

PHASIANIDAE - PHEASANTS & QUAILS

- + *Callipepla californica*
California quail

CHARADRIIDAE - PLOVERS

- + *Charadrius vociferus*
killdeer

COLUMBIDAE - PIGEONS & DOVES

- +* *Columba livia*
rock dove
- Columba fasciata*
band-tailed pigeon
- + *Zenaidura macroura*
mourning dove

CUCULIDAE - CUCKOOS & ROADRUNNERS

- + *Geococcyx californianus*

TYRANNIDAE - TYRANT FLYCATCHERS

- + *Contopus borealis*
olive-sided flycatcher
- Contopus sordidulus*
western wood-pewee
- + *Empidonax difficilis*
Pacific-slope flycatcher
- Empidonax oberholseri*
 dusky flycatcher

- + *Sayornis nigricans*
black phoebe
- + *Sayornis saya*
Say's phoebe
- + *Myiarchus cinerascens*
ash-throated flycatcher
- + *Tyrannus vociferans*
Cassin's kingbird
- + *Tyrannus verticalis*
western kingbird

HIRUNDINIDAE - SWALLOWS

- Tachycineta bicolor*
tree swallow
- Tachycineta thalassina*
violet-green swallow
- + *Stelgidopteryx serripennis*
northern rough-winged swallow
- + *Hirundo pyrrhonota*
cliff swallow
- + *Hirundo rustica*
barn swallow

CORVIDAE - JAYS & CROWS

- + *Aphelocoma coerulescens*
western scrub-jay
- + *Corvus brachyrhynchos*
American crow
- + *Corvus corax*
common raven

greater roadrunner

TYTONIDAE - BARN OWLS

- + *Tyto alba*
barn owl

STRIGIDAE - TRUE OWLS

- Otus kennicottii*
western screech-owl
- + *Bubo virginianus*
great horned owl

APODIDAE - SWIFTS

- + *Chaetura vauxi*
Vaux's swift
- + *Aeronautes saxatalis*
white-throated swift

TROCHILIDAE - HUMMINGBIRDS

- + *Archilochus alexandri*
black-chinned hummingbird
- + *Calypte anna*
Anna's hummingbird
- + *Calypte costae*
Costa's hummingbird
- + *Selasphorus sasin*
Allen's hummingbird

PICIDAE - WOODPECKERS

- + *Melanerpes formicivorus*
acorn woodpecker
- Melanerpes lewis*
Lewis' woodpecker
- + *Picoides nuttallii*
Nuttall's woodpecker
- Picoides pubescens*
downy woodpecker
- + *Colaptes auratus*
northern flicker

PARIDAE - TITMICE

- + *Parus inornatus*
plain titmouse

AEGITHALIDAE - BUSHTITS

- + *Psaltriparus minimus*
bushtit

SITTIDAE - NUTHATCHES

- Sitta carolinensis*
white-breasted nuthatch

TROGLODYTIDAE - WRENS

- + *Thryomanes bewickii*
Bewick's wren
- + *Troglodytes aedon*
house wren

MUSCICAPIDAE - KINGLETS, GNATCATCHERS, THRUSHES & BABBLERS

- + *Regulus calendula*
ruby-crowned kinglet
- + *Polioptila caerulea*
blue-gray gnatcatcher
- + *Sialia mexicana*
western bluebird
- Catharus ustulatus*
Swainson's thrush
- + *Catharus guttatus*
hermit thrush
- + *Turdus migratorius*
American robin
- + *Chamaea fasciata*
wrentit

MIMIDAE - THRASHERS

- + *Mimus polyglottos*
northern mockingbird
- + *Toxostoma redivivum*
California thrasher

PARIDAE - TITMICE

- + *Parus inornatus*
plain titmouse

AEGITHALIDAE - BUSH TITS

- + *Psaltriparus minimus*
bush tit

SITTIDAE - NUTHATCHES

- Sitta carolinensis*
white-breasted nuthatch

TROGLODYTIDAE - WRENS

- + *Thryomanes bewickii*
Bewick's wren
- + *Troglodytes aedon*
house wren

MUSCICAPIDAE - KINGLETS, GNATCATCHERS, THRUSHES & BABBLERS

- + *Regulus calendula*
ruby-crowned kinglet
- + *Poliptila caerulea*
blue-gray gnatcatcher
- + *Sialia mexicana*
western bluebird
- Catharus ustulatus*
Swainson's thrush
- + *Catharus guttatus*
hermit thrush
- + *Turdus migratorius*
American robin
- + *Chamaea fasciata*
wrentit

MIMIDAE - THRASHERS

- + *Mimus polyglottos*
northern mockingbird
- + *Toxostoma redivivum*
California thrasher

BOMBYCILLIDAE - WAXWINGS

Bombycilla cedrorum
cedar waxwing

PTILOGONATIDAE - SILKY-FLYCATCHERS

+ *Phainopepla nitens*
phainopepla

STURNIDAE - STARLINGS

+* *Sturnus vulgaris*
European starling

VIREONIDAE - VIREOS

Vireo solitarius
solitary vireo
+ *Vireo huttoni*
Hutton's vireo
+ *Vireo gilvus*
warbling vireo

EMBERIZIDAE- WOOD WARBLERS, TANAGERS, BUNTINGS & BLACKBIRDS

+ *Vermivora celata*
orange-crowned warbler
+ *Dendroica petechia*
yellow warbler
+ *Dendroica coronata*
yellow-rumped warbler
+ *Dendroica nigrescens*
black-throated gray warbler
+ *Dendroica townsendi*
+ Townsend's warbler
Dendroica occidentalis
+ hermit warbler
Geothlypis trichas
+ common yellowthroat
+ *Wilsonia pusilla*
Wilson's warbler
+ *Icteria virens*
yellow-breasted chat
+ *Pheucticus melanocephalus*

- black-headed grosbeak
- + *Piranga ludoviciana*
western tanager
- + *Guiraca caerulea*
blue grosbeak
- + *Passerina amoena*
lazuli bunting
- + *Pipilo crissalis*
California towhee
- + *Pipilo erythrophthalmus*
spotted towhee
- + *Aimophila ruficeps*
rufous-crowned sparrow
- Spizella atrogularis*
black-chinned sparrow
- Amphispiza belli*
sage sparrow
- + *Spizella passerina*
chipping sparrow
- Pooecetes gramineus*
vesper sparrow
- Chondestes grammacus*
lark sparrow
- + *Passerculus sandwichensis*
savannah sparrow
- Passerella iliaca*
fox sparrow
- + *Melospiza melodia*
song sparrow
- + *Zonotrichia atricapilla*
golden-crowned sparrow
- + *Zonotrichia leucophrys*
white-crowned sparrow
- + *Junco hyemalis*
dark-eyed junco
- + *Sturnella neglecta*
western meadowlark

ICTERIDAE - BLACKBIRDS

- + *Euphagus cyanocephalus*
Brewer's blackbird
- + *Molothrus ater*
brown-headed cowbird

- + *Icterus galbula*
Hooded oriole
- + *Icterus bullockii*
Bullock's oriole

FRINGILLIDAE - FINCHES

- + *Carpodacus mexicanus*
house finch
- + *Carduelis psaltria*
lesser goldfinch
- + *Carduelis tristis*
American goldfinch

PASSERIDAE - OLD WORLD SPARROWS

- * *Passer domesticus*
house sparrow

MAMMALS

DIDELPHIDAE - NEW WORLD OPOSSUMS

- +* *Didelphis virginiana*
Virginia opossum

SORICIDAE - SHREWS

- + *Sorex ornatus*
ornate shrew
- Notiosorex crawfordi*
desert shrew

TALPIDAE - MOLES

- Scapanus latimanus*
broad-footed mole

VESPERTILIONIDAE - EVENING BATS¹

- Myotis evotis*
long-eared myotis
- Myotis thysanodes*
fringed myotis

- Myotis volans*
long-legged myotis
- Myotis californicus*
California myotis
- Myotis leibii*
small-footed myotis
- Eptesicus fuscus*
big brown bat
- Lasiurus blossevillii*
western red bat
- Lasiurus cinereus*
hoary bat
- Euderma maculatum*
spotted bat
- Pipistrellus hesperus*
western pipistrelle
- Plecotus townsendii*
Townsend's big-eared bat
- Antrozous pallidus*
pallid bat

MOLOSSIDAE - FREE-TAILED BATS²

- Tadarida brasiliensis*
Brazilian free-tailed bat
- Eumops perotis*
western mastiff bat

LEPORIDAE - HARES & RABBITS

- + *Sylvilagus audubonii*
desert cottontail
- Sylvilagus bachmani*
brush rabbit
- Lepus californicus*
black-tailed jackrabbit

SCIURIDAE - SQUIRRELS

²

The site is within the range of a number of bat species in several families, but it is unlikely that all are present. As their distribution varies according to season, and as the precise habitat requirements of each species are not well known, it is difficult to determine which species are present on the property.

- + *Tamias merriami*
Merriam's chipmunk
- + *Spermophilus beecheyi*
California ground squirrel
- Sciurus griseus*
western gray squirrel

GEOMYIDAE - POCKET GOPHERS

- Thomomys bottae*
Botta's pocket gopher

HETEROMYIDAE - POCKET MICE & KANGAROO RATS

- Chaetodipus californicus*
California pocket mouse
- Dipodomys agilis*
Pacific kangaroo rat

CRICETIDAE - NEW WORLD RATS AND MICE

- Reithrodontomys megalotis*
western harvest mouse
- Peromyscus boylii*
brush mouse
- + *Peromyscus californicus*
California mouse
- + *Peromyscus maniculatus*
deer mouse
- Peromyscus truei*
pinyon mouse
- + *Neotoma fuscipes*
dusky-footed woodrat

MURIDAE - OLD WORLD MICE, RATS, AND VOLES

- * *Rattus rattus*
black rat
- * *Mus musculus*
house mouse

CANIDAE - WOLVES & FOXES

- +* *Canis familiaris*
domestic dog

- + *Canis latrans*
coyote
- + *Urocyon cinereoargenteus*
gray fox

PROCYONIDAE - RACCOONS

- Bassariscus astutus*
ringtail
- + *Procyon lotor*
raccoon

MUSTELIDAE - WEASELS, SKUNKS & OTTERS

- Mustela frenata*
long-tailed weasel
- Taxidea taxus*
American badger
- Spilogale gracilis*
western spotted skunk
- + *Mephitis mephitis*
striped skunk

FELIDAE - CATS

- +* *Felis catus*
domestic cat
- Lynx rufus*
bobcat

EQUIDAE - HORSES

- + *Equus sp.*
domestic horse

CERVIDAE - DEER

- + *Odocoileus hemionus*
mule deer

**APPENDIX A
VASCULAR FLORA**

Scientific Name	Common Name
FERN AND FERN-ALLIES	
BLECHNACEAE	DEER FERN FAMILY
<i>Woodwardia fimbriata</i>	Chain Fern
DENNSTAEDTIACEAE	BRACKEN FAMILY
<i>Pteridium aquilinum</i>	Western Bracken
DRYOPTERIDACEAE	WOOD FERN FAMILY
<i>Dryopteris arguta</i>	Coastal Wood Fern
EQUISETACEAE	HORSETAIL FAMILY
<i>Equisetum hyemale ssp. affine</i>	Tall Scouring-Rush
POLYPODIACEAE	POLYPODY FAMILY
<i>Polypodium californicum</i>	California Polypody
PTERIDACEAE	BRAKE FAMILY
<i>Adiantum capillus-veneris</i>	Southern Maidenhair
<i>Aspidotis californica</i>	California Lace Fern
<i>Pellaea andromedifolia</i>	Coffee Fern
<i>Pellaea mucronata var. mucronata</i>	Bird's Foot Cliff Brake
<i>Pentagramma triangularis</i>	Goldback Fern
SELAGINELLACEAE	SPIKE-MOSS FAMILY
<i>Selaginella bigelovii</i>	Bigelow's Mossfern
GYMNOSPERMS	
PINACEAE	PINE FAMILY
<i>Pinus coulteri</i>	Coulter Pine (cultivated)
<i>Pinus halepensis*</i>	Cultivated Pine
ANGIOSPERMS-DICOTS	
ACERACEAE	MAPLE FAMILY
<i>Acer negundo var. californica</i>	Boxelder
AMARANTHACEAE	AMARANTH FAMILY
<i>Amaranthus albus*</i>	Tumbleweed

Scientific Name	Common Name
ANACARDIACEAE	SUMAC OR CASHEW FAMILY
<i>Malosma laurina</i>	Laurel Sumac
<i>Rhus integrifolia</i>	Lemonadeberry
<i>Rhus ovata</i>	Sugar Bush
<i>Rhus trilobata</i>	Skunkbrush
<i>Schinus molle*</i>	Peruvian Pepper Tree
<i>Toxicodendron diversilobum</i>	Poison Oak
APIACEAE	CARROT FAMILY
<i>Apiastrum angustifolium</i>	Mock Parsley
<i>Bowlesia incana</i>	American Bowlesia
<i>Conium maculatum*</i>	Poison Hemlock
<i>Daucus pusillus</i>	American Carrot
<i>Foeniculum vulgare*</i>	Sweet Fennel
<i>Lomatium lucidum</i>	Shiny Lomatium
<i>Sanicula arguta</i>	Snakeroot
<i>Sanicula crassicaulis</i>	Pacific Sanicle
<i>Sanicula tuberosa</i>	Sanicula
<i>Tauschia arguta</i>	Tauschia
APOCYNACEAE	Indian Hemp Family
<i>Apocynum cannabinum*</i>	Indian Hemp
<i>Vinca major*</i>	Periwinkle
ARALIACEAE	GINSENG FAMILY
<i>Hedra helix*</i>	English Ivy
ASCLEPIADACEAE	MILKWEED FAMILY
<i>Asclepias eriocarpa</i>	Indiant Milkweed
<i>Asclepias fascicularis</i>	Narrow-leaf Milkweed
<i>Sarcostemma cyanchoides ssp. hartwegii</i>	Climbing Milkweed
ASTERACEAE	SUNFLOWER FAMILY
<i>Acourtia microcephala</i>	Acourtia
<i>Ageratina adenophora*</i>	Ageratina/ Eupatorium
<i>Ambrosia acanthicarpa</i>	Annual Bur Weed
<i>Ambrosia psilostachya</i>	Western Ragweed
<i>Artemisia californica</i>	Coastal Sagebrush
<i>Artemisia douglasiana</i>	Mugwort

Scientific Name	Common Name
<i>Artemisia dracunculus</i>	Tarragon
<i>Baccharis pilularis</i>	Chaparral Broom
<i>Baccharis salicifolia</i>	Mule Fat
<i>Brickellia californica</i>	California Brickelbush
<i>Brickellia nevinii</i>	Nevin's Brickelbush
<i>Carduus pycnocephalus</i> *	Italian Thistle
<i>Centaurea melitensis</i> *	Tocalote
<i>Centaurea solstitialis</i> *	Yellow Star Thistle
<i>Chaenactis artemisiaefolia</i>	Artemisia-Leaved Pincushion
<i>Chaenactis glabriuscula</i> var. <i>glabriuscula</i>	Yellow Pincushion
<i>Chamomilla suaveolens</i> *	Pineapple Weed
<i>Chrysanthemum parthenium</i> *	Feverfew
<i>Cirsium occidentale</i>	Cobweb Thisle
<i>Conyza bonariensis</i> *	Conyza
<i>Conyza canadensis</i>	Horseweed
<i>Cotula australis</i> *	Cotula
<i>Encelia californica</i>	California Encelia
<i>Ericameria pinifolia</i>	Pine Goldenbush
<i>Erigeron foliosus</i> var. <i>foliosus</i>	Leafy Daisy
<i>Eriophyllum confertiflorum</i>	Golden Yarrow
<i>Filago californica</i>	California Fluffweed
<i>Filago gallica</i> *	Narrow-Leaved Filago
<i>Gnaphalium bicolor</i>	Bicolored Cudweed
<i>Gnaphalium californicum</i>	California Everlasting
<i>Gnaphalium canescens</i> ssp. <i>beneolens</i> (= <i>G. beneolens</i>)	Everlasting
<i>Gnaphalium luteo-album</i> *	Weedy Cudweed
<i>Gutierrezia californica</i>	California Matchweed
<i>Hazardia squarrosa</i> ssp. <i>grindelioides</i>	Saw-Toothed Goldenbush
<i>Hedypnois cretica</i> *	Crete Hedypnois
<i>Helianthus annuus</i>	Common Sunflower
<i>Helianthus gracilentus</i>	Sunflower
<i>Hemizonia fasciculata</i>	Fascicled Tarweed
<i>Heterotheca grandiflora</i>	Telegraph Weed
<i>Heterotheca sessiliflora</i> ssp. <i>fastigiata</i>	Camphor Weed
<i>Hypochoeris glabra</i> *	Smooth Cat's Ear
<i>Lactuca serriola</i> *	Prickly Lettuce
<i>Lessingia filaginifolia</i> var. <i>filaginifolia</i>	California Aster
<i>Malacothrix saxatilis</i> var. <i>tenuifolia</i>	Cliff Malacothrix
<i>Picris echioides</i> *	Bristly Ox Tongue
<i>Rafinesquia californica</i>	California Chicory

Scientific Name	Common Name
<i>Senecio flaccidus</i> var. <i>douglasii</i> (= <i>S. douglasii</i>)	Groundsel/Ragwort
<i>Senecio mikanioides</i> *	German-Ivy
<i>Senecio vulgaris</i> *	Common Groundsel
<i>Sonchus oleraceus</i> *	Common Sow-thistle
<i>Stebbinsoseris heterocarpa</i>	Derived Microseris
<i>Stephanomeria cichoriacea</i>	Stephanomeria
<i>Stephanomeria virgata</i>	Tall Wreath-Plant
<i>Stylocline gnaphalioides</i>	Everlasting Next Straw
<i>Uropappus lindleyi</i>	Silver Puffs
BETULACEAE	BIRCH FAMILY
<i>Alnus rhombifolia</i>	White Alder
BORAGINACEAE	BORAGE FAMILY
<i>Amsinckia menziesii</i>	Fireweed
<i>Cryptantha clevelandii</i>	Clevelands' Cryptantha
<i>Cryptantha intermedia</i>	Common Cryptantha
<i>Cryptantha micromeres</i>	Popcorn Flower
<i>Cryptantha microstachys</i>	Popcorn Flower
<i>Cryptantha muricata</i>	Prickly Cryptantha
<i>Pectocarya linearis</i> var. <i>ferocula</i>	Slender Pectocarya
<i>Pectocarya peniciliata</i>	Pectocarya
<i>Plagiobothrys collinus</i> var. <i>fulvescens</i> (= <i>P. californicus</i> var. <i>f.</i>)	Popcornflower
<i>Plagiobothrys nothofulvus</i>	Rusty Popcornflower
BRASSICACEAE	MUSTARD FAMILY
<i>Brassica nigra</i> *	Black Mustard
<i>Cardamine californica</i>	Milkmaids
<i>Cardamine oligosperma</i>	Toothwort
<i>Erysimum capitatum</i>	Western wallflower
<i>Guillenia lasiophylla</i>	California Mustard
<i>Hirschfeldia incana</i> * (= <i>Brassica geniculata</i>)	Shortpod Mustard
<i>Lepidium nitidum</i>	Peppergrass
<i>Lepidium virginicum</i> var. <i>virginicum</i>	Peppergrass
<i>Lobularia maritima</i> *	Sweet Alyssum
<i>Sisymbrium irio</i> *	London Rocket
<i>Sisymbrium officinale</i> *	Hedge Mustard
<i>Sisymbrium orientale</i> *	Sisymbrium
<i>Thysanocarpus laciniatus</i>	Southern Fringe-Pod

Scientific Name	Common Name
CACTACEAE	CACTUS FAMILY
<i>Opuntia littoralis</i>	Coastal Prickly Pear
CAMPANULACEAE	BELLFLOWER FAMILY
<i>Triodanis biflora</i>	Venus Looking-glass
CAPRIFOLIACEAE	HONEYSUCKLE FAMILY
<i>Lonicera subspicata</i> var. <i>demudata</i>	Honeysuckle
<i>Sambucus mexicana</i>	Mexican Elderberry
<i>Symphoricarpos mollis</i>	Spreading Snowberry
CARYOPHYLLACEAE	PINK FAMILY
<i>Cerastium glomeratum</i> *	Mouse-ear Chickweed
<i>Polycarpon tetraphyllum</i> *	Four-leaved Allseed
<i>Silene gallica</i> *	Common Catchfly
<i>Silene laciniata</i> ssp. <i>major</i>	Southern Pink
<i>Silene multinervia</i>	Many-Nerved Catchfly
<i>Spergula arvensis</i> *	Stickwort/ Starwort
<i>Spergularia bocconii</i> *	Boccone's Sand-Spurrey
<i>Stellaria media</i> *	Common Chickweed
<i>Stellaria nitens</i>	Shining Chickweed
CHENOPODIACEAE	GOOSEFOOT FAMILY
<i>Chenopodium ambrosioides</i> *	Mexican Tea
<i>Chenopodium berlandieri</i>	Pit-seed Goosefoot
<i>Chenopodium californicum</i>	California Goosefoot
<i>Salsola tragus</i> *	Russian Thistle
CISTACEAE	ROCK-ROSE FAMILY
<i>Helianthemum scoparium</i>	California Rock-Rose
CONVOLVUACEAE	MORNING-GLORY FAMILY
<i>Calystegia macrostegia</i> ssp. <i>intermedia</i>	Short-Lobed Morning-Glory
CRASSULACEAE	STONECROP FAMILY
<i>Crassula connata</i> (= <i>C. erecta</i>)	Pygmy-weed
<i>Dudleya lanceolata</i>	Lance-leaved Dudleya
CUCURBITACEAE	GOURD FAMILY

Scientific Name	Common Name
<i>Marah macrocarpus</i>	Wild Cucumber
CUSCUTACEAE	DODDER FAMILY
<i>Cuscuta californica</i>	California Dodder
DITISCAEAE	DATISCA FAMILY
<i>Datisca glomerata</i>	Durango root
ERICACEAE	HEATH FAMILY
<i>Arctostaphylos glandulosa</i> ssp. <i>mollis</i>	Manzanita
<i>Arctostaphylos glauca</i>	Manzanita
EUPHORBIACEAE	SPURGE FAMILY
<i>Chamaesyce melanadenia</i> (= <i>Euphorbia</i> m.)	Prostrate Spurge
<i>Chamaesyce polycarpa</i>	Small-Seed Sandmat
<i>Eremocarpus setigerus</i>	Dove Weed
<i>Ricinus communis</i> *	Castor Bean
<i>Stillingia linearifolia</i>	Stillingia
FABACEAE	LEGUME FAMILY
<i>Acacia</i> sp.*	Wattle
<i>Amorpha californica</i>	False Indigo
<i>Cytisus striatus</i> *	Broom
<i>Lathyrus vestitus</i> var. <i>laetiflorus</i>	Chaparral Sweet Pea
<i>Lotus purshianus</i> var. <i>purshianus</i>	Spanish Lotus
<i>Lotus salsuginosus</i> ssp. <i>salsuginosus</i>	Alkali Lotus
<i>Lotus scoparius</i>	Deerweed
<i>Lotus strigosus</i> (= <i>L. tomentellus</i>)	Hairy Lotus
<i>Lotus wrangelianus</i> (= <i>L. subpinnatus</i>)	Chile Hosackia/Trefoil
<i>Lupinus bicolor</i>	Miniature Lupine
<i>Lupinus concinnus</i>	Bajada Lupine
<i>Lupinus hirsutissimus</i>	Stinging Lupine
<i>Lupinus sparsiflorus</i> var. <i>sparsifolius</i>	Coulter's Lupine
<i>Lupinus succulentus</i>	Lupine
<i>Lupinus truncatus</i>	Collar Lupine
<i>Medicago polymorpha</i> *	California Burclover
<i>Melilotus alba</i> *	White Sweetclover
<i>Melilotus indicus</i> *	Yellow Sweet Clover
<i>Robinia pseudo-acacia</i> *	Locust Tree
<i>Senna artemisioides</i> *	Australian Senna

Scientific Name	Common Name
<i>Spartium junceum</i>	Spanish broom
<i>Trifolium hirtum</i> *	Rose Clover
<i>Vicia villosa ssp. Varia</i>	Hairy vetch
FAGACEAE	OAK FAMILY
<i>Quercus agrifolia</i> var. <i>agrifolia</i>	Coast Live Oak
<i>Quercus agrifolia</i> var. <i>oxyadenia</i>	Interior Coast Live Oak
<i>Quercus berberidifolia</i>	Scrub Oak
<i>Q. berberidflia</i> X <i>Q. durata</i>	Hybrid Scrub Oak
<i>Quercus durata</i> var. <i>gabrielensis</i>	Leather Oak
GARRYACEAE	SILK TASSEL FAMILY
<i>Garrya veatchii</i>	Silf tassel bush
GERANIACEAE	GERANIUM FAMILY
<i>Erodium botrys</i> *	Long-beaked Filaree
<i>Erodium cicutarium</i> *	Red-stemmed Filaree
<i>Erodium moschatum</i> *	White-Stemmed Filaree
<i>Geranium rotundifolium</i> *	Round-Leaf Geranium
GROSSULARIACEAE	GOOSEBERRY FAMILY
<i>Ribes aureum</i>	Golden Currant
<i>Ribes malvaceum</i>	Chaparral Currant
<i>Ribes speciosum</i>	Fuchsia-Flowered Gooseberry
HYDROPHYLLACEAE	WATERLEAF FAMILY
<i>Emmenanthe penduliflora</i>	Whispering Bells
<i>Eriodictyon crassifolium</i>	Thick-leaved Yerba Santa
<i>Eucryta chrysanthemifolia</i>	Common Eucrypta
<i>Nemophila menziesii</i>	Baby Blue Eyes
<i>Phacelia cicutarium</i>	Caterpillar Phacelia
<i>Phacelia distans</i>	Common Phacelia
<i>Phacelia minor</i>	Wild Canterbury Bells
<i>Phacelia ramosissima</i>	Phacelia
<i>Pholistoma auritum</i> var. <i>auritum</i>	Blue Fiesta Flower
JUGLANDACEAE	Walnut Family
<i>Juglans californica</i> var. <i>californica</i>	Southern California black walnut

Scientific Name	Common Name
LAMIACEAE	MINT FAMILY
<i>Lamium amplexicaule*</i>	Common Henbit
<i>Marrubium vulgare*</i>	Horehound
<i>Mentha spicata*</i>	Spearmint
<i>Salvia apiana</i>	White Sage
<i>Salvia columbariae</i>	Chia
<i>Salvia mellifera</i>	Black Sage
<i>Scutellaria tuberosa</i>	Skull Cap
<i>Stachys bullata</i>	Hedge Nettle
<i>Trichostema lanatum</i>	Woolly Bluecurls
<i>Trichostema lanceolatum</i>	Vinegar Weed
LAURACEAE	LAUREL FAMILY
<i>Umbellularia californica</i>	California Bay
MALVACEAE	MALLOW FAMILY
<i>Malacothamnus fasciculatus</i>	Chaparral Mallow
<i>Malva parviflora*</i>	Cheeseweed
MORACEAE	MULBERRY FAMILY
<i>Ficus carica*</i>	FIG FAMILY
<i>Morus alba*</i>	Mulberry
MYRTACEAE	MYRTLE FAMILY
<i>Eucalyptus spp.*</i>	Eucalyptus
NYCTAGINACEAE	FOUR O'CLOCK FAMILY
<i>Mirabilis californica</i>	California Wishbone Bush
OLEACEAE	OLIVE FAMILY
<i>Fraxinus dipetala</i>	Flowering Ash
<i>Olea europaea*</i>	European Olive
ONAGRACEAE	EVENING PRIMROSE FAMILY
<i>Camissonia bistorta</i>	Southern Sun Cup
<i>Camissonia californica</i>	False Mustard
<i>Camissonia micrantha</i>	Small Primrose
<i>Clarkia unguiculata</i>	Elegant Clarkia
<i>Epilobium brachycarpum</i>	Epilobium

Scientific Name	Common Name
<i>Epilobium canum</i>	California Fuschia
OROBANCHACEAE	BROOM-RAPE FAMILY
<i>Orobanche bulbosa</i>	Chaparral Broom-Rape
OXALIDACEAE	OXALIS FAMILY
<i>Oxalis pes-caprae*</i>	Bermuda Buttercup
PAEONIACEAE	PEONY FAMILY
<i>Paeonia californica</i>	Peony
PAPAVERACEAE	POPPY FAMILY
<i>Eschscholzia californica</i>	California Poppy
<i>Dendromecon rigida</i>	Bush poppy
<i>Papaver californicum</i>	Fire Poppy
PLANTAGINACEAE	PLANTAIN FAMILY
<i>Plantago erecta</i>	California Plantain
<i>Plantago lanceolata*</i>	English Plantain
<i>Plantago major*</i>	Common Plantain
PLATANACEAE	SYCAMORE FAMILY
<i>Platanus racemosa</i>	Western Sycamore
POLEMONIACEAE	PHLOX FAMILY
<i>Allophyllum divaricatum</i>	False gilia
<i>Eriastrum sapphirinum</i>	Sapphire Eriastrum
<i>Gilia angelensis</i>	Los Angeles Gilia
<i>Leptodactylon californicum</i>	Chaparral Phlox
<i>Navarretia hamata</i>	Southern Hooked Navarretia
POLYGONACEAE	BUCKWHEAT FAMILY
<i>Chorizanthe staticoides</i>	Turkish Rugging
<i>Eriogonum elongatum var. elongatum</i>	Long-stemmed Buckwheat
<i>Eriogonum fasciculatum var. foliolosum</i>	Interior Flat-Top Buckwheat
<i>Polygonum arenastrum*</i>	Common Knotweed
<i>Pterostegia drymarioides</i>	Pterostegia
<i>Rumex crispus*</i>	Curly Dock
PORTULACACEAE	PURSLANE FAMILY

Scientific Name	Common Name
<i>Calindrinia ciliata</i>	Red Maids
<i>Calyptridium monandrum</i>	Common Calyptridium
<i>Claytonia parviflora</i> ssp. <i>parviflora</i> (= <i>Montia perfoliata</i> var. <i>utahnesis</i>)	Claytonia
<i>Claytonia perfoliata</i>	Common Miner's Lettuce
PRIMULACEAE	PRIMROSE FAMILY
<i>Anagallis arvensis</i> *	Scarlet Pimpernel
RANUNCULACEAE	BUTTERCUP FAMILY
<i>Clematis lasiantha</i>	Pipestem Virgin's Bower
<i>Delphinium cardinale</i>	Scarlet Delphinium
<i>Delphinium parryi</i> ssp. <i>parryi</i>	Parry's Larkspur
<i>Ranunculus hebecarpus</i>	Pubescent Buttersup
RHAMNACEAE	BUCKTHORN FAMILY
<i>Ceanothus crassifolius</i>	Hoaryleaf Ceanothus
<i>Ceanothus oliganthus</i>	Green-Leaf Ceanothus
<i>Rhamnus californica</i> var. <i>californica</i>	California Coffeeberry
<i>Rhamnus crocea</i>	Spiny Redberry
<i>Rhamnus ilicifolia</i>	Holly-leaf Redberry
ROSACEAE	ROSE FAMILY
<i>Adenostoma fasciculatum</i>	Chamise
<i>Cercocarpus betuloides</i>	California Mountain Mahogany
<i>Heteromeles arbutifolia</i>	Toyon
<i>Potentilla glandulosa</i> ssp. <i>glandulosa</i>	Sticky Cinquefoil
<i>Prunus ilicifolia</i>	Holly-Leaved Cherry
<i>Rubus ursinus</i>	California Blackberry
RUBIACEAE	MADDER FAMILY
<i>Galium angustifolium</i> ssp. <i>angustifolium</i>	Chaparral Bedstraw
<i>Galium aparine</i>	Goose Grass
<i>Galium porrigens</i>	Climbing Bedstraw
SALICACEAE	WILLOW FAMILY
<i>Populus balsamifera</i> ssp. <i>trichocarpa</i> (= <i>P. trichocarpa</i>)	Black Cottonwood
<i>Salix exigua</i> (= <i>S. hindsiana</i>)	Narrow-Leaf Willow
<i>Salix gooddingii</i>	Goodding's Black Willow
<i>Salix lasiolepis</i>	Arroyo Willow
<i>Salix lucida</i> ssp. <i>Lasiandra</i>	Shining Willow

Scientific Name	Common Name
SCROPHULARIACEAE	FIGWORT FAMILY
<i>Antirrhinum coulterianum</i>	Coulter's Snapdragon
<i>Antirrhinum kelloggi</i>	Antirrhinum
<i>Antirrhinum multiflorum</i>	Snapdragon
<i>Castilleja foliolosa</i>	Felt Paintbrush
<i>Keckiella cordifolia</i>	Heart-Leaved Bush Penstemon
<i>Mimulus aurantiacus</i>	Bush Monkey Flower
<i>Mimulus brevipes</i>	Slope Semaphore
<i>Mimulus cardinalis</i>	Scarlet Monkey-Flower
<i>Penstemon spectabilis</i>	Showy Penstemon
<i>Scrophularia californica</i>	California Figwort
<i>Verbascum virgatum*</i>	Woolly Mullein
SIMAROUBACEAE	SIMAROUBA FAMILY
<i>Ailanthus altissima*</i>	Tree of Heaven
SIMMONDSIACEAE	JOJOBA FAMILY
<i>Simmondsia chinensis</i>	Jojoba
SOLANACEAE	NIGHTSHADE FAMILY
<i>Datura wrightii</i>	Jimson Weed
<i>Nicotiana glauca*</i>	Tree Tobacco
<i>Solanum douglasii</i>	Douglas' Nightshade
<i>Solanum xanti</i>	Purple Nightshade
ULMACEAE	ELM FAMILY
<i>Ulmus minor</i>	English Elm
URTICACEAE	NETTLE FAMILY
<i>Hesperocnide tenella</i>	Dwarf Nettle
<i>Parietaria hespera</i>	Parietaria
VISCACEAE	MISTLETOE FAMILY
<i>Phoradendron villosum</i>	Hairy Mistletoe
ZYGOPHYLLACEAE	CALTROP FAMILY
<i>Tribulus terrestris*</i>	Puncture Vine

Scientific Name	Common Name
ANGIOSPERMS-MONOCOTS	
ARECACEAE	PALM FAMILY
<i>Washingtonia sp.*</i>	Fan Palm
CYPERACEAE	SEDGE FAMILY
<i>Carex sp.</i>	Nut Sedge
<i>Carex barbarae</i>	Santa Barbara Sedge
<i>Carex spissa</i>	San Diego Sedge
<i>Cyperus eragrostis</i>	Tall Umbrella Sedge
<i>Cyperus involucratus*</i>	African Umbrella Sedge
IRIDACEAE	IRIS FAMILY
<i>Sisyrinchium bellum</i>	Blue-Eyed Grass
JUNCACEAE	RUSH FAMILY
<i>Juncus macrophyllus</i>	Rush
<i>Juncus textilis</i>	Basket Rush
<i>Juncus xiphioides</i>	Iris-Leaved Rush
LILIACEAE	LILY FAMILY
<i>Bloomeria crocea</i>	Common Goldenstar
<i>Calochortus plummerae</i>	Plummer's Mariposa Lily
<i>Chlorogalum pomeridianum</i>	Wavy-Leaved Soap Plant
<i>Dichelostemma capitatum</i>	Blue Dicks
<i>Lilium humboldtii ssp. ocellatum</i>	Ocellated Humboldt Lily
<i>Yucca whipplei</i>	Our Lord's Candle
<i>Zygadenus fremontii</i>	Death Camas
POACEAE	GRASS FAMILY
<i>Achnatherum coronatum (=Stipa c.)</i>	Giant Needlegrass
<i>Agrostis pallens</i>	Bent Grass
<i>Aristida purpurea var. parishii</i>	Parish Three-Awn
<i>Avena barbata*</i>	Slender Wild Oat
<i>Avena fatua*</i>	Wild Oat
<i>Bromus diandrus*</i>	Ripgut Grass
<i>Bromus hordeaceus*</i>	Soft Chess
<i>Bromus madritensis ssp. rubens* (= B. rubens)</i>	Red Brome
<i>Cynodon dactylon*</i>	Bermuda Grass
<i>Digitaria sanguinalis*</i>	Crab Grass
<i>Distichlis spicata</i>	Salt Grass

Scientific Name	Common Name
<i>Ehrharta erecta</i> *	Ehrharta
<i>Elymus glaucus</i>	Blue Wildrye
<i>Festuca pratensis</i> *	Fescue
<i>Hordeum murinum</i> ssp. <i>leporinum</i> * (=H. <i>leporinum</i>)	Foxtail Barley
<i>Lamarckia aurea</i> *	Goldentop
<i>Leptochloa uninervia</i>	Mexican Sprangletop
<i>Leymus condensatus</i>	Leymus
<i>Melica imperfecta</i>	Coast Range Melic
<i>Muhlenbergia microsperma</i>	Little-Seed Muhly
<i>Muhlenbergia rigens</i>	Deergrass
<i>Nassella lepida</i>	Foothill Needlegrass
<i>Nassella pulchra</i>	Purple Needlegrass
<i>Pennisetum setaceum</i> *	Fountaingrass
<i>Piptatherum miliaceum</i> *	Smilo Grass
<i>Poa annua</i> *	Annual Bluegrass
<i>Poa secunda</i> ssp. <i>secunda</i>	One-Sided Bluegrass
<i>Polypogon monspeliensis</i> *	Rabbitfoot Grass
<i>Schismus barbatus</i> *	Mediterranean Grass
<i>Vulpia myuros</i> *	Rattail Fescue
<i>Vulpia octoflora</i> (=Festuca o.)	Hairy Six Weeks Fescue

**APPENDIX A
LICHEN FLORA**

<i>Acarospora schleicheri</i>	Rare, on rock.
<i>Caloplaca ulmorum</i>	Rare, on granitic rock.
<i>Candelaria concolor</i>	Infrequent, on <i>Quercus agrifolia</i> and <i>Q. durata</i> .
<i>Candelariella vitellina</i>	Rare, on moss over rock.
<i>Cladonia chlorophaea</i>	Locally common on soil: roadbanks, rock scree slopes, and in deep canyons beneath shrubs.
<i>Cladonia pyxidata</i>	Uncommon, on soil in chaparral.
<i>Cladonia coniocraea</i>	Rare, in rock crevices in deep canyon.
<i>Diploicia canescens</i>	Rare, on <i>Quercus agrifolia</i> .
<i>Flavoparmelia caperata</i>	Rare, single, small thallus on <i>Quercus durata</i> .
<i>Hyperphyscia adglutinata</i>	Infrequent, on <i>Quercus agrifolia</i> and <i>Q. durata</i> .
<i>Lecanora varia</i>	Rare, on shrub branches.
<i>Lepraria lobificans</i>	Uncommon, on soil along roadbanks and under rock ledges.
<i>Psora californica</i>	Rare, on soil.
<i>Physcia adscendens</i>	Uncommon, on oaks, shrubs, and on rock.
<i>Physconia enteroxantha</i>	Rare, poorly developed thallus at base of <i>Quercus</i> in unburned chaparral.
<i>Pyrrhospora quercea</i>	Uncommon, on bark of <i>Ceanothus</i> in unburned chaparral.
<i>Porpidia thomsonii</i>	Uncommon, on granitic rocks.
<i>Rhinodina cf. sophodes</i>	Rare, on granitic rocks; mostly sterile.
<i>Trapeliopsis cf. wallrothii</i>	Rare, on soil among outcrops; mostly sterile.
<i>Xanthoria fallax</i>	Uncommon, on large oaks.
Infertile brown or gray crusts on rock occur throughout the site and cannot be identified.	

Environmental Review Unit
Maya Zaitzevsky
200 North Spring Street Room 763
Los Angeles CA 90012

Re: ENV-2002-2481-EIR
SCH#2002091018
Canyon Hills Project DEIR Comments

Dear Ms Zaitzevsky:

In summary, the City's fragile and finite biological resources and pristine habitat are at stake. The flora and fauna present on the site, which is a significant ecological area that is well over 1,000 contiguous acres, is uniquely adapted genetically to survive and exist in this locale. Death is known to be fatal. No creature will survive the grading of the 250+ acres, no habitat shall remain and no replacement stock or mitigation plan can mitigate such significant losses as:

182-20

silvery legless lizards
slender salamanders
orange throated whiptail,

all endangered species that I have personally observed within the project boundaries.

Additionally:

rosy boas
salvadora hexalepis (western or coast patch nose snake)
California whipsnake
two striped garter snake,

182-21

are all endangered species expected to occur within the project boundaries (see Canyon Hills DEIR Biological Resources-Flora and Fauna page IV.D-25). No survivors will there be! no prisoners will be taken! These creatures are uniquely adapted to this specific location. They have no chance of survival other than "as is, where is." The pristine habitat, also uniquely genetically adapted, will no longer exist within the City of Los Angeles. These are significant impacts to the city's natural biological resources. Mitigation has not even been considered or proposed to address loss of these particular habitats and the inhabitants therein.

This again is a deficiency of the DEIR.

Rick Grubb

CDFG Threatened and Endangered Plants List October 2003

GLOBAL RANKING

The *global rank* (G-rank) is a reflection of the overall condition of an element throughout its global range.

SPECIES OR NATURAL COMMUNITY LEVEL

- G1 = Less than 6 viable element occurrences (Eos) OR less than 1,000 individuals OR less than 2,000 acres.
- G2 = 6-20 Eos OR 1,000-3,000 individuals OR 2,000-10,000 acres.
- G3 = 21-100 Eos OR 3,000-10,000 individuals OR 10,000-50,000 acres.
- G4 = Apparently secure; this rank is clearly lower than G3 but factors exist to cause some concern; i.e., there is some threat, or somewhat narrow habitat.
- G5 = Population or stand demonstrably secure to ineradicable due to being commonly found in the world.

SUBSPECIES LEVEL

Subspecies receive a T-rank attached to the G-rank. With the subspecies, the G-rank reflects the condition of the entire species, whereas the T-rank reflects the global situation of just the subspecies or variety. For example: *Chorizanthe robusta* var. *hartwegii*. This plant is ranked G2T1. The G-rank refers to the whole species range i.e., *Chorizanthe robusta*. The T-rank refers only to the global condition of var. *hartwegii*.

STATE RANKING

The *state rank* (S-rank) is assigned much the same way as the global rank, except state ranks in California often also contain a threat designation attached to the S-rank.

- S1 = Less than 6 Eos OR less than 1,000 individuals OR less than 2,000 acres
 - S1.1 = very threatened
 - S1.2 = threatened
 - S1.3 = no current threats known
- S2 = 6-20 Eos OR 1,000-3,000 individuals OR 2,000-10,000 acres
 - S2.1 = very threatened
 - S2.2 = threatened
 - S2.3 = no current threats known
- S3 = 21-100 Eos or 3,000-10,000 individuals OR 10,000-50,000 acres
 - S3.1 = very threatened
 - S3.2 = threatened
 - S3.3 = no current threats known
- S4 = Apparently secure within California; this rank is clearly lower than S3 but factors exist to cause some concern; i.e. there is some threat, or somewhat narrow habitat. NO THREAT RANK.
- S5 = Demonstrably secure to ineradicable in California. NO THREAT RANK.

Notes:

1. Other considerations used when ranking a species or natural community include the pattern of distribution of the element on the landscape, fragmentation of the population/stands, and historical extent as compared to its modern range. It is important to take a bird's eye or aerial view when ranking sensitive elements rather than simply counting Eos.

2. Uncertainty about the rank of an element is expressed in two major ways:

By expressing the rank as a range of values: e.g., S2S3 means the rank is somewhere between S2 and S3.

By adding a ? to the rank: e.g., S2? This represents more certainty than S2S3, but less than S2.

3. Other symbols

GH All sites are historical; the element has not been seen for at least 20 years, but suitable habitat still exists (SH = All California sites are historical).

GX All sites are extirpated; this element is extinct in the wild (SX = All California sites are extirpated).

GXC Extinct in the wild; exists in cultivation.

G1Q The element is very rare, but there are taxonomic questions associated with it.

T Rank applies to a subspecies or variety.

State of California
 The Resources Agency
 DEPARTMENT OF FISH AND GAME
 Habitat Conservation Division
 Wildlife & Habitat Data Analysis Branch
 California Natural Diversity Database

Comment Letter No. 182
 Attachment 182a

STATE AND FEDERALLY LISTED
 ENDANGERED, THREATENED, AND RARE PLANTS OF CALIFORNIA

October 2003

Designations and Subtotals for each Designation:

Designations:	Subtotals:
SE State-listed endangered.....	131
ST State-listed threatened	22
SR State-listed rare.....	67
SC State candidate for listing.....	1
FE Federally listed endangered.....	138
FT Federally listed threatened.....	47
FPE Federally proposed endangered.....	0
FPT Federally proposed threatened.....	0
Both State and Federally listed	123

State listing is pursuant to §1904 (Native Plant Protection Act of 1977) and §2074.2 and §2075.5 (California Endangered Species Act of 1984) of the Fish and Game Code, relating to listing of Endangered, Threatened and Rare species of plants and animals. Federal listing is pursuant with the Federal Endangered Species Act of 1973, as amended. For information regarding plant conservation, contact the Habitat Conservation Planning Branch, 1416 Ninth Street, Sacramento, CA 95814, phone (916) 653-9767, or the nearest Department of Fish and Game office. For information on this list, contact Information Services at (916) 324-3812. Scientific and common names for State-listed plants are listed in Title 14, §670.2. Scientific or common names in parentheses are the most scientifically accepted nomenclature but have yet to be officially adopted into the California Code of Regulations, Title 14, Division 1, §670.2.

State Designated Plants

	<u>Classification</u>			
	<u>State</u>	<u>List Date</u>	<u>Federal</u>	<u>List Date</u>
<i>Acanthomintha duttonii</i> San Mateo thorn-mint	SE	Jul 1979	FE	Oct 18, 1985
<i>Acanthomintha ilicifolia</i> San Diego thorn-mint	SE	Jan 1982	FT	Oct 13, 1998
<i>Agrostis blasdalei</i> var. <i>marinensis</i> Marin bent grass	SR	Nov 1978		
<i>Allium munzii</i> Munz's onion	ST	Jan 1990	FE	Oct 13, 1998

1

Classification

<u>State Designated Plants</u>	<u>State</u>	<u>List Date</u>	<u>Federal</u>	<u>List Date</u>
<i>Allium yosemitense</i> Yosemite onion	SR	Jul 1982		
<i>Alopecurus aequalis</i> var. <i>sonomensis</i> Sonoma alopecurus			FE	Oct 22, 1997
<i>Ambrosia pumila</i> San Diego ambrosia			FE	July 22, 2002
<i>Amsinckia grandiflora</i> large-flowered fiddleneck	SE	Apr 1982	FE	May 07, 1985
<i>Arabis hoffmannii</i> Hoffmann's rock cress			FE	Jul 31, 1997
<i>Arabis macdonaldiana</i> McDonald's rock cress	SE	Jul 1979	FE	Sep 29, 1978
<i>Arctostaphylos bakeri</i> Baker's manzanita (= <i>A. b.</i> ssp. <i>bakeri</i>).	SR	Sep 1979		
<i>Arctostaphylos confertiflora</i> Santa Rosa Island manzanita			FE	Jul 31, 1997
<i>Arctostaphylos densiflora</i> Vine Hill manzanita	SE	Aug 1981		
<i>Arctostaphylos edmundsii</i> var. <i>parvifolia</i> Hanging Gardens manzanita	SR	Aug 1981		
<i>Arctostaphylos glandulosa</i> ssp. <i>crassifolia</i> Del Mar manzanita			FE	Oct 07, 1996
<i>Arctostaphylos hookeri</i> ssp. <i>hearstiorum</i> Hearst's manzanita	SE	Sep 1979		
<i>Arctostaphylos hookeri</i> ssp. <i>ravenii</i> Presidio manzanita	SE	Nov 1978	FE	Oct 26, 1979
<i>Arctostaphylos imbricata</i> San Bruno Mountain manzanita	SE	Sep 1979		
<i>Arctostaphylos morroensis</i> Morro manzanita			FT	Dec 15, 1994
<i>Arctostaphylos myrtifolia</i> Ione manzanita			FT	May 26, 1999
<i>Arctostaphylos pacifica</i> Pacific manzanita	SE	Sep 1979		
<i>Arctostaphylos pallida</i> pallid manzanita	SE	Nov 1979	FT	Apr 22, 1998
<i>Arenaria paludicola</i> marsh sandwort	SE	Feb 1990	FE	Aug 03, 1993
<i>Arenaria ursina</i> Big Bear Valley sandwort			FT	Sep 14, 1998
<i>Astragalus agnicidus</i> Humboldt milk-vetch	SE	Apr 1982		

<u>State Designated Plants</u>	<u>Classification</u>			
	<u>State</u>	<u>List Date</u>	<u>Federal</u>	<u>List Date</u>
<i>Astragalus albens</i> Cushenbury milk-vetch			FE	Aug 24,1994
<i>Astragalus brauntonii</i> Braunton's milk-vetch			FE	Jun 29,1997
<i>Astragalus clarianus</i> Clara Hunt's milk-vetch	ST	Jan 1990	FE	Oct 22,1997
<i>Astragalus jaegerianus</i> Lane Mountain milk-vetch			FE	Oct 06,1998
<i>Astragalus johannis-howellii</i> Long Valley milk-vetch	SR	Jul 1982		
<i>Astragalus lentiginosus</i> var. <i>coachellae</i> Coachella Valley milk-vetch			FE	Oct 06,1998
<i>Astragalus lentiginosus</i> var. <i>piscinensis</i> Fish Slough milk-vetch			FT	Oct 06,1998
<i>Astragalus lentiginosus</i> var. <i>sesquimetralis</i> Sodaville milk-vetch	SE	Sep 1979		
<i>Astragalus magdalenae</i> var. <i>peirsonii</i> Peirson's milk-vetch	SE	Nov 1979	FT	Oct 06,1998
<i>Astragalus monoensis</i> var. <i>monoensis</i> Mono milk-vetch	SR	Jul 1982		
<i>Astragalus pycnostachyus</i> var. <i>lanosissimus</i> Ventura Marsh milk-vetch	SE	Apr 2000	FE	May 21,2001
<i>Astragalus tener</i> var. <i>titi</i> coastal dunes milk-vetch	SE	Feb 1982	FE	Aug 12,1998
<i>Astragalus traskiae</i> Trask's milk-vetch	SR	Nov 1979		
<i>Astragalus tricarinatus</i> triple-ribbed milk-vetch			FE	Oct 06,1998
<i>Atriplex coronata</i> var. <i>notatior</i> San Jacinto Valley crownscale			FE	Oct 13,1998
<i>Atriplex tularensis</i> Bakersfield smallscale	SE	Jan 1987		
<i>Baccharis vanessae</i> Encinitas baccharis	SE	Jan 1987	FT	Oct 07,1996
<i>Bensoniella oregona</i> bensoniella	SR	Jul 1982		
<i>Berberis nevinii</i> Nevin's barberry	SE	Jan 1987	FE	Oct 13,1998
<i>Berberis pinnata</i> ssp. <i>insularis</i> island barberry	SE	Nov 1979	FE	Jul 31,1997
<i>Blennosperma bakeri</i> Sonoma sunshine	SE	Feb 1992	FE	Dec 02,1991
<i>Blennosperma nanum</i> var. <i>robustum</i> Point Reyes blennosperma	SR	Nov 1978		

State Designated Plants

	<u>State</u>	<u>List Date</u>	<u>Classification</u>	
			<u>Federal</u>	<u>List Date</u>
<i>Bloomeria humilis</i> dwarf goldenstar	SR	Nov 1978		
<i>Brodiaea coronaria</i> ssp. <i>rosea</i> Indian Valley brodiaea	SE	Sep 1979		
<i>Brodiaea filifolia</i> thread-leaved brodiaea	SE	Jan 1982	FT	Oct 13,1998
<i>Brodiaea insignis</i> Kaweah brodiaea	SE	Nov 1979		
<i>Brodiaea pallida</i> Chinese Camp brodiaea	SE	Nov 1978	FT	Sep 14,1998
<i>Calamagrostis foliosa</i> leafy reed grass	SR	Nov 1979		
<i>Calochortus dunnii</i> Dunn's mariposa lily	SR	Nov 1979		
<i>Calochortus persistens</i> Siskiyou mariposa lily	SR	Jul 1982		
<i>Calochortus tiburonensis</i> Tiburon mariposa lily	ST	May 1987	FT	Feb 03,1995
<i>Calyptridium pulchellum</i> Mariposa pussypaws			FT	Sep 14,1998
<i>Calystegia stebbinsii</i> Stebbins's morning-glory	SE	Aug 1981	FE	Oct 18,1996
<i>Camissonia benitensis</i> San Benito evening-primrose			FT	Feb 12,1985
<i>Carex albida</i> white sedge	SE	Nov 1979	FE	Oct 22,1997
<i>Carex tompkinsii</i> Tompkins's sedge	SR	Nov 1979		
<i>Carpenteria californica</i> tree-anemone	ST	Jan 1990		
<i>Castilleja affinis</i> ssp. <i>neglecta</i> Tiburon Indian paintbrush	ST	Jan 1990	FE	Feb 03, 1995
<i>Castilleja campestris</i> ssp. <i>succulenta</i> succulent owl's-clover	SE	Sep 1979	FT	Mar 22,1997
<i>Castilleja cinerea</i> ash-gray Indian paintbrush			FT	Sep 14,1998
<i>Castilleja gleasonii</i> Mt. Gleason Indian paintbrush	SR	Jul 1982		
<i>Castilleja grisea</i> San Clemente Island Indian paintbrush	SE	Apr 1982	FE	Aug 11,1977
<i>Castilleja mollis</i> soft-leaved Indian paintbrush			FE	Jul 31,1997
<i>Castilleja uliginosa</i> Pitkin Marsh Indian paintbrush	SE	Nov 1978		
<i>Caulanthus californicus</i> California jewel-flower	SE	Jan 1987	FE	Jul 19,1990

<u>State Designated Plants</u>	<u>Classification</u>			
	<u>State</u>	<u>List Date</u>	<u>Federal</u>	<u>List Date</u>
<i>Caulanthus stenocarpus</i> slender-pod jewel-flower	SR	Nov 1979		
<i>Ceanothus ferrisae</i> coyote ceanothus			FE	Feb 03,1995
<i>Ceanothus hearstiorum</i> Hearst's ceanothus	SR	Aug 1981		
<i>Ceanothus maritimus</i> maritime ceanothus	SR	Nov 1978		
<i>Ceanothus masonii</i> Mason's ceanothus	SR	Nov 1978		
<i>Ceanothus ophiochilus</i> Vail Lake ceanothus	SE	Jan 1994	FT	Oct 13,1998
<i>Ceanothus roderickii</i> Pine Hill ceanothus	SR	Jul 1982	FE	Oct 18,1996
<i>Cercocarpus traskiae</i> Catalina Island mountain-mahogany	SE	Apr 1982	FE	Aug 08,1997
<i>Chamaesyce hooveri</i> Hoover's spurge			FT	Mar 26,1997
<i>Chlorogalum purpureum</i> var. <i>purpureum</i> ¹ purple amole			FT	Mar 20,2000
<i>Chlorogalum purpureum</i> var. <i>reductum</i> ² Camatta Canyon amole	SR	Nov 1978	FT	Mar 20,2000
<i>Chorizanthe howellii</i> Howell's spineflower	ST	Jan 1987	FE	Jun 22,1992
<i>Chorizanthe orcuttiana</i> Orcutt's spineflower	SE	Nov 1979	FE	Oct 07,1996
<i>Chorizanthe parryi</i> var. <i>fernandina</i> San Fernando Valley spineflower	SE	Aug 2001		
<i>Chorizanthe pungens</i> var. <i>hartwegiana</i> Ben Lomond spineflower			FE	Feb 04,1994
<i>Chorizanthe pungens</i> var. <i>pungens</i> Monterey spineflower			FT	Feb 04,1994
<i>Chorizanthe robusta</i> (includes vars. <i>hartwegii</i> and <i>robusta</i>) robust spineflower			FE	Feb 04,1994
<i>Chorizanthe valida</i> Sonoma spineflower	SE	Jan 1990	FE	Jun 22,1992
<i>Cirsium ciliolatum</i> Ashland thistle	SE	Sep 1982		
<i>Cirsium fontinale</i> var. <i>fontinale</i> fountain thistle	SE	Jul 1979	FE	Feb 03,1995

¹ The U.S. Fish & Wildlife Service listed the entire species, *Chlorogalum purpureum*.

² The U.S. Fish & Wildlife Service listed the entire species, *Chlorogalum purpureum*.

State Designated Plants

	<u>Classification</u>			
	<u>State</u>	<u>List Date</u>	<u>Federal</u>	<u>List Date</u>
<i>Cirsium fontinale</i> var. <i>obispoense</i> Chorro Creek bog thistle	SE	Jun 1993	FE	Dec 15,1994
<i>Cirsium hydrophilum</i> var. <i>hydrophilum</i> Suisun thistle			FE	Nov 20,1997
<i>Cirsium loncholepis</i> La Graciosa thistle	ST	Feb 1990	FE	Mar 20,2000
<i>Cirsium rhotophilum</i> surf thistle	ST	Feb 1990		
<i>Clarkia franciscana</i> Presidio clarkia	SE	Nov 1978	FE	Feb 03,1995
<i>Clarkia imbricata</i> Vine Hill clarkia	SE	Nov 1978	FE	Oct 22,1997
<i>Clarkia lingulata</i> Merced clarkia	SE	Jan 1989		
<i>Clarkia speciosa</i> ssp. <i>immaculata</i> Pismo clarkia	SR	Nov 1978	FE	Jan 15,1994
<i>Clarkia springvillensis</i> Springville clarkia	SE	Sep 1979	FT	Sep 14,1998
<i>Cordylanthus maritimus</i> ssp. <i>maritimus</i> salt marsh bird's-beak	SE	Jul 1979	FE	Sep 28,1978
<i>Cordylanthus mollis</i> ssp. <i>mollis</i> soft bird's-beak	SR	Jul 1979	FE	Nov 20,1997
<i>Cordylanthus nidularius</i> Mt. Diablo bird's-beak	SR	Nov 1978		
<i>Cordylanthus palmatus</i> palmate-bracted bird's-beak	SE	May 1984	FE	Jul 01, 1986
<i>Cordylanthus rigidus</i> ssp. <i>littoralis</i> seaside bird's-beak	SE	Jan 1982		
<i>Cordylanthus tenuis</i> ssp. <i>capillaris</i> Pennell's bird's-beak	SR	Nov 1978	FE	Feb 03,1995
<i>Croton wigginsii</i> Wiggins's croton	SR	Jan 1982		
<i>Cryptantha roosiorum</i> bristlecone cryptantha	SR	Jul 1982		
<i>Cupressus abramsiana</i> Santa Cruz cypress	SE	Nov 1979	FE	Jan 08,1987
<i>Cupressus goveniana</i> ssp. <i>goveniana</i> Gowen cypress			FT	Aug 12,1998
<i>Dedeckera eurekaensis</i> July gold	SR	Nov 1978		
<i>Delphinium bakeri</i> Baker's larkspur	SR	Nov 1979	FE	Jan 26,2000
<i>Delphinium hesperium</i> ssp. <i>cuyamaca</i> Cuyamaca larkspur	SR	Jul 1982		

State Designated Plants

	<u>Classification</u>			
	<u>State</u>	<u>List Date</u>	<u>Federal</u>	<u>List Date</u>
<i>Delphinium luteum</i> yellow larkspur	SR	Sep 1979	FE	Jan 26,2000
<i>Delphinium variegatum</i> ssp. <i>kinkiense</i> San Clemente Island larkspur	SE	Sep 1979	FE	Aug 11,1977
<i>Dichanthelium lanuginosum</i> var. <i>thermale</i> Geysers dichanthelium	SE	Sep 1978		
<i>Dithyrea maritima</i> beach spectaclepod	ST	Feb 1990		
<i>Dodecahema leptoceras</i> slender-horned spineflower	SE	Jan 1982	FE	Sep 28,1987
<i>Downingia concolor</i> var. <i>brevior</i> Cuyamaca Lake downingia	SE	Feb 1982		
<i>Dudleya abramsii</i> ssp. <i>parva</i> Conejo dudleya (=D. <i>parva</i>)			FT	Jan 29,1997
<i>Dudleya blochmaniae</i> ssp. <i>brevifolia</i> short-leaved dudleya (=D. <i>brevifolia</i>)	SE	Jan 1982		
<i>Dudleya cymosa</i> ssp. <i>agourensis</i> ³ Santa Monica Mtns. dudleya			FT	Jan 29, 1997
<i>Dudleya cymosa</i> ssp. <i>marcescens</i> marcescent dudleya	SR	Nov 1978	FT	Jan 29,1997
<i>Dudleya cymosa</i> ssp. <i>ovatifolia</i> Santa Monica Mountains dudleya			FT	Jan 29,1997
<i>Dudleya nesiotica</i> Santa Cruz Island dudleya	SR	Nov 1979	FT	Jul 31,1997
<i>Dudleya setchellii</i> Santa Clara Valley dudleya			FE	Feb 03,1995
<i>Dudleya stolonifera</i> Laguna Beach dudleya	ST	Jan 1987	FT	Oct 13,1998
<i>Dudleya traskiae</i> Santa Barbara Island dudleya	SE	Nov 1979	FE	Apr 26,1978
<i>Dudleya verityi</i> Verity's dudleya			FT	Jan 29,1997
<i>Enceliopsis nudicaulis</i> var. <i>corrugata</i> Ash Meadows daisy			FT	May 20,1985
<i>Eremalche kernensis</i> Kern mallow			FE	Jul 19,1990
<i>Eriastrum densifolium</i> ssp. <i>sanctorum</i> Santa Ana River woollystar	SE	Jan 1987	FE	Sep 28,1987
<i>Eriastrum hooveri</i> Hoover's woolly-star (=eriastrum)			Delisted	Oct 7,2003
<i>Eriastrum tracyi</i> Tracy's eriastrum	SR	Jul 1982		

³ The U.S. Fish & Wildlife Service has listed the more encompassing *Dudleya cymosa* ssp. *ovatifolia* from which ssp. *agourensis* was split.

State Designated Plants

	<u>Classification</u>			
	<u>State</u>	<u>List Date</u>	<u>Federal</u>	<u>List Date</u>
<i>Erigeron parishii</i> Parish's daisy			FT	Aug 24,1994
<i>Eriodictyon altissimum</i> Indian Knob mountainbalm	SE	Jul 1979	FE	Dec 15,1995
<i>Eriodictyon capitatum</i> Lompoc yerba santa	SR	Sep 1979	FE	Mar 20,2000
<i>Eriogonum alpinum</i> Trinity buckwheat	SE	Jul 1979		
<i>Eriogonum apricum</i> var. <i>apricum</i> ⁴ Ione buckwheat	SE	Aug 1981	FE	May 26,1999
<i>Eriogonum apricum</i> var. <i>prostratum</i> ⁵ Irish Hill buckwheat	SE	Jan 1987	FE	May 26,1999
<i>Eriogonum butterworthianum</i> Butterworth's buckwheat	SR	Nov 1979		
<i>Eriogonum crocatum</i> Conejo buckwheat	SR	Sep 1979		
<i>Eriogonum ericifolium</i> var. <i>thornei</i> Thorne's buckwheat	SE	Nov 1979		
<i>Eriogonum giganteum</i> var. <i>compactum</i> Santa Barbara Island buckwheat	SR	Nov 1979		
<i>Eriogonum grande</i> ssp. <i>timorum</i> San Nicolas Island buckwheat	SE	Nov 1979		
<i>Eriogonum kelloggii</i> Kellogg's buckwheat	SE	Apr 1982		
<i>Eriogonum kennedyi</i> var. <i>austromontanum</i> southern mountain buckwheat			FT	Sep 14,1978
<i>Eriogonum ovalifolium</i> var. <i>vineum</i> Cushenbury buckwheat			FE	Aug 24,1994
<i>Eriogonum twisselmannii</i> Twisselmann's buckwheat	SR	Jul 1982		
<i>Eriophyllum congdonii</i> Congdon's woolly sunflower	SR	Jul 1982		
<i>Eriophyllum latilobum</i> San Mateo woolly sunflower	SE	Jun 1992	FE	Feb 03,1995
<i>Eryngium aristulatum</i> var. <i>parishii</i> San Diego button-celery	SE	Jul 1979	FE	Aug 03,1993
<i>Eryngium constancei</i> Loch Lomond button-celery	SE	Jan 1987	FE	Dec 23,1986

⁴ The U.S. Fish & Wildlife Service has listed *Eriogonum apricum* as the species, which includes both rare varieties.

⁵ The U.S. Fish & Wildlife Service has listed *Eriogonum apricum* as the species, which includes both rare varieties.

<u>State Designated Plants</u>	<u>Classification</u>			
	<u>State</u>	<u>List Date</u>	<u>Federal</u>	<u>List Date</u>
<i>Eryngium racemosum</i> Delta button-celery	SE	Aug 1981		
<i>Erysimum capitatum</i> var. <i>angustatum</i> Contra Costa wallflower	SE	Nov 1978	FE	Apr 26,1978
<i>Erysimum menziesii</i> ⁶ Menzies's wallflower	SE	Sep 1984	FE	Jun 22,1992
<i>Erysimum teretifolium</i> Santa Cruz wallflower	SE	Aug 1981	FE	Feb 04,1994
<i>Fremontodendron decumbens</i> Pine Hill flannelbush	SR	Jul 1979	FE	Oct 18,1996
<i>Fremontodendron mexicanum</i> Mexican flannelbush	SR	Jul 1982	FE	Oct 13,1998
<i>Fritillaria roderickii</i> Roderick's fritillary	SE	Nov 1979		
<i>Fritillaria striata</i> striped adobe-lily	ST	Jan 1987		
<i>Galium angustifolium</i> ssp. <i>borregoense</i> Borrego bedstraw	SR	Sep 1979		
<i>Galium buxifolium</i> box bedstraw	SR	Nov 1979	FE	Jul 31,1997
<i>Galium californicum</i> ssp. <i>sierrae</i> El Dorado bedstraw	SR	Nov 1979	FE	Oct 18,1996
<i>Galium catalinense</i> ssp. <i>acrispum</i> San Clemente Island bedstraw	SE	Apr 1982		
<i>Gilia tenuiflora</i> ssp. <i>arenaria</i> sand gilia	ST	Jan 1987	FE	Jun 22,1992
<i>Gilia tenuiflora</i> ssp. <i>hoffmannii</i> Hoffmann's slender-flowered gilia			FE	Jul 31,1997
<i>Gratiola heterosepala</i> Boggs Lake hedge-hyssop	SE	Nov 1978		
<i>Grindelia fraxino-pratensis</i> Ash Meadows gumplant			FT	May 20,1985
<i>Hazardia orcuttii</i> Orcutt's hazardia	ST	Aug 2002		
<i>Helianthemum greenei</i> island rush-rose			FT	Jul 31,1997
<i>Helianthus niveus</i> ssp. <i>tephrodes</i> Algodones Dunes sunflower	SE	Nov 1979		
<i>Hemizonia arida</i> Red Rock tarplant (= <i>Deinandra arida</i>)	SR	Jul 1982		
<i>Hemizonia conjugens</i> Otay tarplant (= <i>Deinandra conjugens</i>)	SE	Nov 1979	FT	Oct 13,1998

⁶ The U.S. Fish & Wildlife Service separately listed all as endangered, *E. menziesii* ssp. *eurekense*, *E. menziesii* ssp. *menziesii*, and *E. menziesii* ssp. *yadonii*.

State Designated Plants

	<u>State</u>	<u>List Date</u>	<u>Classification</u>	
			<u>Federal</u>	<u>List Date</u>
<i>Hemizonia increscens</i> ssp. <i>villosa</i> Gaviota tarplant (= <i>Deinandra increscens</i> ssp. <i>villosa</i>)	SE	Jan 1990	FE	Mar 20,2000
<i>Hemizonia minthornii</i> Santa Susana tarplant (= <i>Deinandra minthornii</i>)	SR	Nov 1978		
<i>Hemizonia mohavensis</i> Mojave tarplant (= <i>Deinandra mohavensis</i>)	SE	Aug 1981		
<i>Hesperolinon congestum</i> Marin western flax	ST	Jun 1992	FT	Feb 03,1995
<i>Hesperolinon didymocarpum</i> Lake County western flax	SE	Aug 1981		
<i>Holmgrenanthe</i> (= <i>Maurandya</i>) <i>petrophila</i> rock lady	SR	Jul 1982		
<i>Holocarpha macradenia</i> Santa Cruz tarplant	SE	Sep 1979	FT	Mar 20,2000
<i>Howellia aquatilis</i> water howellia			FT	Jul 14,1994
<i>Ivesia callida</i> Tahquitz ivesia	SR	Jul 1982		
<i>Lasthenia burkei</i> Burke's goldfields	SE	Sep 1979	FE	Dec 02,1991
<i>Lasthenia conjugens</i> Contra Costa goldfields			FE	Jun 18,1997
<i>Layia carnosa</i> beach layia	SE	Jan 1990	FE	Jun 22,1992
<i>Lembertia congdonii</i> San Joaquin woollythreads (= <i>Monolopia congdonii</i>)			FE	Jul 19,1990
<i>Lesquerella kingii</i> ssp. <i>bernardina</i> San Bernardino Mountains bladderpod			FE	Aug 24,1994
<i>Lessingia germanorum</i> San Francisco lessingia	SE	Jan 1990	FE	Jun 19,1997
<i>Lewisia congdonii</i> Congdon's lewisia	SR	Jul 1982		
<i>Lilaeopsis masonii</i> Mason's lilaeopsis	SR	Nov 1979		
<i>Lilium occidentale</i> western lily	SE	Jan 1982	FE	Aug 17,1994
<i>Lilium pardalinum</i> ssp. <i>pitkinense</i> Pitkin Marsh lily	SE	Nov 1978	FE	Oct 22,1997
<i>Limnanthes bakeri</i> Baker's meadowfoam	SR	Nov 1978		
<i>Limnanthes douglasii</i> var. <i>sulphurea</i> Point Reyes meadowfoam	SE	Apr 1982		
<i>Limnanthes floccosa</i> ssp. <i>californica</i> Butte County meadowfoam	SE	Feb 1982	FE	Jun 08,1992
<i>Limnanthes gracilis</i> var. <i>parishii</i> Parish's meadowfoam	SE	Jul 1979		

State Designated Plants

Classification

	<u>State</u>	<u>List Date</u>	<u>Federal</u>	<u>List Date</u>
<i>Limnanthes vinculans</i> Sebastopol meadowfoam	SE	Nov 1979	FE	Dec 02,1991
<i>Lithophragma maximum</i> San Clemente Island woodland star	SE	Feb 1982	FE	Aug 08,1997
<i>Lotus argophyllus</i> var. <i>adsurgens</i> San Clemente Island bird's-foot trefoil	SE	Nov 1979		
<i>Lotus argophyllus</i> var. <i>niveus</i> Santa Cruz Island bird's-foot trefoil	SE	Aug 1981		
<i>Lotus dendroideus</i> var. <i>traskiae</i> San Clemente Island lotus	SE	Apr 1982	FE	Aug 11,1977
<i>Lupinus citrinus</i> var. <i>deflexus</i> Mariposa lupine	ST	Jan 1990		
<i>Lupinus milo-bakeri</i> Milo Baker's lupine	ST	Jan 1987		
<i>Lupinus nipomensis</i> Nipomo Mesa lupine	SE	Jan 1987	FE	Mar 20,2000
<i>Lupinus padre-crowleyi</i> Father Crowley's lupine	SR	Aug 1981		
<i>Lupinus tidestromii</i> var. <i>tidestromii</i> Tidestrom's lupine (=L. <i>tidestromii</i>)	SE	Jan 1987	FE	Jun 22,1992
<i>Machaeranthera lagunensis</i> Mount Laguna aster (<i>M. asteroides</i> var. <i>lagunensis</i>)	SR	Sep 1979		
<i>Mahonia</i> (=Berberis) <i>soumei</i> Truckee barberry	SE	Jul 1979	Delisted	Oct 1,2003
<i>Malacothamnus clementinus</i> San Clemente Island bush mallow	SE	Feb 1982	FE	Aug 11,1977
<i>Malacothamnus fasciculatus</i> var. <i>nesioticus</i> Santa Cruz Island bush mallow	SE	Nov 1979	FE	Jul 31,1997
<i>Malacothrix indecora</i> Santa Cruz Island malacothrix (=cliff-aster)			FE	Jul 31,1997
<i>Malacothrix squalida</i> island malacothrix			FE	Jul 31,1997
<i>Monardella linoides</i> ssp. <i>viminea</i> willowy monardella	SE	Nov 1979	FE	Oct 13,1998
<i>Navarretia fossalis</i> spreading navarretia			FT	Oct 13,1998
<i>Navarretia leucocephala</i> ssp. <i>pauciflora</i> few-flowered navarretia	ST	Jan 1990	FE	Jun 18,1997
<i>Navarretia leucocephala</i> ssp. <i>plieantha</i> many-flowered navarretia	SE	Nov 1979	FE	Jun 18,1997
<i>Nemacladus twisselmannii</i> Twisselmann's nemacladus	SR	Jul 1982		
<i>Neostapfia colusana</i> Colusa grass	SE	Nov 1979	FT	Mar 26,1997
<i>Nitrophila mohavensis</i> Amargosa nitrophila	SE	Nov 1979	FE	May 20,1985

State Designated Plants

	<u>State</u>	<u>List Date</u>	<u>Classification</u>	
			<u>Federal</u>	<u>List Date</u>
<i>Nolina interrata</i> Dehesa nolina	SE	Nov 1979		
<i>Oenothera californica</i> ssp. <i>eurekensis</i> Eureka Dunes evening-primrose	SR	Nov 1978	FE	Apr 26, 1978
<i>Oenothera deltoides</i> ssp. <i>howellii</i> Antioch Dunes evening-primrose	SE	Nov 1978	FE	Apr 26, 1978
<i>Opuntia basilaris</i> var. <i>treleasei</i> Bakersfield cactus	SE	Jan 1990	FE	Jul 19, 1990
<i>Orcuttia californica</i> California Orcutt grass	SE	Sep 1979	FE	Aug 03, 1993
<i>Orcuttia inaequalis</i> San Joaquin Valley Orcutt grass	SE	Sep 1979	FT	Mar 26, 1997
<i>Orcuttia pilosa</i> hairy Orcutt grass	SE	Sep 1979	FE	Mar 26, 1997
<i>Orcuttia tenuis</i> slender Orcutt grass	SE	Sep 1979	FT	Mar 26, 1997
<i>Orcuttia viscida</i> Sacramento Orcutt grass	SE	Jul 1979	FE	Mar 26, 1997
<i>Ornithostaphylos oppositifolia</i> Baja California birdbush	SE	Apr 2001		
<i>Oxytheca parishii</i> var. <i>goodmaniana</i> Cushenbury oxytheca			FE	Aug 24, 1994
<i>Parvisedum leiocarpum</i> Lake County stonecrop (= <i>Sedella leiocarpa</i>)	SE	Jan 1990	FE	Jun 18, 1997
<i>Pedicularis dudleyi</i> Dudley's lousewort	SR	Sep 1979		
<i>Pentachaeta bellidiflora</i> white-rayed pentachaeta	SE	Jun 1992	FE	Feb 03, 1995
<i>Pentachaeta lyonii</i> Lyon's pentachaeta	SE	Jan 1990	FE	Jan 29, 1997
<i>Phacelia insularis</i> ssp. <i>insularis</i> northern Channel Islands phacelia			FE	Jul 31, 1997
<i>Phlox hirsuta</i> Yreka phlox	SE	Jan 1987	FE	Feb 3, 2000
<i>Piperia yadonii</i> Yadon's rein orchid			FE	Aug 12, 1998
<i>Plagiobothrys diffusus</i> San Francisco popcorn-flower	SE	Sep 1979		
<i>Plagiobothrys strictus</i> Calistoga popcorn-flower	ST	Jan 1990	FE	Oct 22, 1997
<i>Pleuropogon hooverianus</i> North Coast semaphore grass	ST	Aug 2002		
<i>Poa atropurpurea</i> San Bernardino blue grass			FE	Sep 14, 1998
<i>Poa napensis</i> Napa blue grass	SE	Jul 1979	FE	Oct 22, 1997

<u>State Designated Plants</u>	<u>Classification</u>			
	<u>State</u>	<u>List Date</u>	<u>Federal</u>	<u>List Date</u>
<i>Pogogyne abramsii</i> San Diego mesa mint	SE	Jul 1979	FE	Sep 28,1978
<i>Pogogyne clareana</i> Santa Lucia mint	SE	Nov 1979		
<i>Pogogyne nudiuscula</i> Otay Mesa mint	SE	Jan 1987	FE	Aug 03,1993
<i>Polygonum hickmanii</i> Scott's Valley polygonum	SC	Jun 2003	FE	Apr 8,2003
<i>Potentilla hickmanii</i> Hickman's cinquefoil	SE	Sep 1979	FE	Aug 12,1998
<i>Pseudobahia bahiifolia</i> Hartweg's golden sunburst	SE	Aug 1981	FE	Feb 06,1997
<i>Pseudobahia peirsonii</i> San Joaquin adobe sunburst	SE	Jan 1987	FT	Feb 06,1997
<i>Rorippa gambellii</i> Gambel's water cress	ST	Feb 1990	FE	Aug 03,1993
<i>Rorippa subumbellata</i> Tahoe yellow cress	SE	Apr 1982		
<i>Rosa minutifolia</i> small-leaved rose	SE	Oct 1989		
<i>Sanicula maritima</i> adobe sanicle	SR	Aug 1981		
<i>Sanicula saxatilis</i> rock sanicle	SR	Jul 1982		
<i>Senecio ganderi</i> Gander's ragwort	SR	Jul 1982		
<i>Senecio layneae</i> Layne's ragwort	SR	Nov 1979	FT	Oct 18,1996
<i>Sibara filifolia</i> Santa Cruz Island rock cress			FE	Aug 08,1997
<i>Sidalcea coville</i> Owens Valley checkerbloom	SE	Jul 1979		
<i>Sidalcea hickmanii</i> ssp. <i>anomala</i> Cuesta Pass checkerbloom	SR	Nov 1979		
<i>Sidalcea hickmanii</i> ssp. <i>parishii</i> Parish's checkerbloom	SR	Nov 1979		
<i>Sidalcea keckii</i> Keck's checker-mallow			FE	Feb 16,2000
<i>Sidalcea oregana</i> ssp. <i>valida</i> Kenwood Marsh checkerbloom	SE	Jan 1982	FE	Oct 22,1997
<i>Sidalcea pedata</i> bird-foot checkerbloom	SE	Jan 1982	FE	Aug 31,1984
<i>Sidalcea stipularis</i> Scadden Flat checkerbloom	SE	Jan 1982		
<i>Silene campanulata</i> ssp. <i>campanulata</i> Red Mountain catchfly	SE	Apr 1982		

State Designated Plants

	<u>State</u>	<u>List Date</u>	<u>Classification</u>	
			<u>Federal</u>	<u>List Date</u>
<i>Streptanthus albidus</i> ssp. <i>albidus</i> Metcalf Canyon jewel-flower			FE	Feb 03,1995
<i>Streptanthus niger</i> Tiburon jewel-flower	SE	Feb 1990	FE	Feb 03,1995
<i>Suaeda californica</i> California seablite			FE	Dec 15,1994
<i>Swallenia alexandrae</i> Eureka Valley dune grass	SR	Aug 1981	FE	Apr 26,1978
<i>Taraxacum californicum</i> California dandelion			FE	Sep 14,1998
<i>Thelypodium stenopetalum</i> slender-petaled thelypodium	SE	Feb 1982	FE	Aug 31,1984
<i>Thermopsis macrophylla</i> var. <i>agnina</i> Santa Ynez false lupine (= <i>T. macrophylla</i>)	SR	Aug 1981		
<i>Thlaspi californicum</i> Kneeland Prairie penny-cress			FE	Feb 9,2000
<i>Thysanocarpus conchuliferus</i> Santa Cruz Island fringedpod			FE	Aug 31,1997
<i>Trichostema austromontanum</i> ssp. <i>compactum</i> Hidden Lake bluecurls			FT	Sep 14,1998
<i>Trifolium amoenum</i> showy Indian clover			FE	Oct 22,1997
<i>Trifolium polyodon</i> Pacific Grove clover	SR	Sep 1979		
<i>Trifolium trichocalyx</i> Monterey clover	SE	Nov 1979	FE	Aug 12,1998
<i>Tuctoria greenei</i> Greene's tuctoria	SR	Sep 1979	FE	Mar 26,1997
<i>Tuctoria mucronata</i> Crampton=s tuctoria	SE	Jul 1979	FE	Sep 28,1978
<i>Verbena californica</i> California vervain	ST	Aug 1994	FT	Sep 14,1998
<i>Verbesina dissita</i> crownbeard	ST	Jan 1990	FT	Oct 07,1996

E	Kangaroo rat, Morro Bay (<i>Dipodomys heermanni morroensis</i>)
E	Kangaroo rat, San Bernardino Merriam's (<i>Dipodomys merriami parvus</i>)
E	Kangaroo rat, Stephens' (<i>Dipodomys stephensi</i> (incl. <i>D. cascus</i>))
E	Kangaroo rat, Tipton (<i>Dipodomys nitratoides nitratoides</i>)
E	Lizard, blunt-nosed leopard (<i>Gambelia silus</i>)
T	Lizard, Coachella Valley fringe-toed (<i>Uma inornata</i>)
T	Lizard, island night (<i>Xantusia riversiana</i>)
T	Moth, Kern primrose sphinx (<i>Euproserpinus euterpe</i>)
E	Mountain beaver, Point Arena (<i>Aplodontia rufa nigra</i>)
E	Mouse, Pacific pocket (<i>Perognathus longimembris pacificus</i>)
E	Mouse, salt marsh harvest (<i>Reithrodontomys raviventris</i>)
T	Murrelet, marbled (CA, OR, WA) (<i>Brachyramphus marmoratus marmoratus</i>)
XN	Otter, southern sea [XN] (<i>Enhydra lutris nereis</i>)
T	Otter, southern sea (except where XN) (<i>Enhydra lutris nereis</i>)
T	Owl, northern spotted (<i>Strix occidentalis caurina</i>)
E	Pelican, brown (except U.S. Atlantic coast, FL, AL) (<i>Pelecanus occidentalis</i>)
E	Pikeminnow (=squawfish), Colorado (except Salt and Verde R. drainages, AZ) (<i>Ptychocheilus lucius</i>)
T	Plover, western snowy (Pacific coastal pop.) (<i>Charadrius alexandrinus nivosus</i>)
E	Pupfish, desert (<i>Cyprinodon macularius</i>)
E	Pupfish, Owens (<i>Cyprinodon radiosus</i>)
E	Rabbit, riparian brush (<i>Sylvilagus bachmani riparius</i>)
E	Rail, California clapper (<i>Rallus longirostris obsoletus</i>)
E	Rail, light-footed clapper (U.S.A. only) (<i>Rallus longirostris levipes</i>)
E	Rail, Yuma clapper (U.S.A. only) (<i>Rallus longirostris yumanensis</i>)
E	Salamander, California tiger U.S.A. (CA - Santa Barbara County) (<i>Ambystoma californiense</i>)
E	Salamander, California tiger U.S.A. (CA - Sonoma County) (<i>Ambystoma californiense</i>)
E	Salamander, desert slender (<i>Batrachoseps aridus</i>)
E	Salamander, Santa Cruz long-toed (<i>Ambystoma macrodactylum croceum</i>)
E	Salmon, chinook (winter Sacramento R.) (<i>Oncorhynchus (=Salmo) tshawytscha</i>)
T	Salmon, chinook (CA Central Valley spring-run) (<i>Oncorhynchus (=Salmo) tshawytscha</i>)
T	Salmon, chinook (CA coastal) (<i>Oncorhynchus (=Salmo) tshawytscha</i>)
T	Salmon, coho (central CA coast) (<i>Oncorhynchus (=Salmo) kisutch</i>)
T	Salmon, coho (OR, CA pop.) (<i>Oncorhynchus (=Salmo) kisutch</i>)
E	Sea turtle, green (except where endangered) (<i>Chelonia mydas</i>)
T	Sea turtle, leatherback (<i>Dermochelys coriacea</i>)
T	Sea turtle, loggerhead (<i>Caretta caretta</i>)
T	Seal, Guadalupe fur (<i>Arctocephalus townsendi</i>)
E	Sea-lion, Steller (eastern pop.) (<i>Eumetopias jubatus</i>)
E	Sheep, bighorn (Peninsular CA pop.) (<i>Ovis canadensis</i>)
E	Sheep, bighorn (Sierra Nevada DPS) (<i>Ovis canadensis californiana</i>)
E	Shrew, Buena Vista Lake ornate (<i>Sorex ornatus relictus</i>)
E	Shrike, San Clemente loggerhead (<i>Lanius ludovicianus mearnsi</i>)
E	Shrimp, California freshwater (<i>Syncaeris pacifica</i>)
E	Skipper, Carson wandering (<i>Pseudocopeodes eunus obscurus</i>)
T	Skipper, Laguna Mountains (<i>Pyrgus ruralis lagunae</i>)
E	Smelt, delta (<i>Hypomesus transpacificus</i>)
E	Snail, Morro shoulderband (=Banded dune) (<i>Helminthoglypta walkeriana</i>)
T	Snake, giant garter (<i>Thamnophis gigas</i>)
T	Snake, San Francisco garter (<i>Thamnophis sirtalis tetrataenia</i>)
E	Sparrow, San Clemente sage (<i>Amphispiza belli clementeae</i>)
E	Steelhead (southern CA coast) (<i>Oncorhynchus (=Salmo) mykiss</i>)
T	Steelhead (Central Valley CA) (<i>Oncorhynchus (=Salmo) mykiss</i>)
T	Steelhead (central CA coast) (<i>Oncorhynchus (=Salmo) mykiss</i>)
T	Steelhead northern CA (<i>Oncorhynchus (=Salmo) mykiss</i>)
T	Steelhead (south central CA coast) (<i>Oncorhynchus (=Salmo) mykiss</i>)
E	Stickleback, unarmored threespine (<i>Gasterosteus aculeatus williamsoni</i>)
E	Sucker, Lost River (<i>Deltistes luxatus</i>)
E	Sucker, Modoc (<i>Catostomus microps</i>)
T	Sucker, razorback (<i>Xyrauchen texanus</i>)
E	Sucker, Santa Ana (3 CA river basins) (<i>Catostomus santaanae</i>)
E	Sucker, shortnose (<i>Chasmistes brevirostris</i>)
E	Tadpole shrimp, vernal pool (<i>Lepidurus packardii</i>)
E	Terrestrial, California least (<i>Sterna antillarum browni</i>)
E	Tiger beetle, Ohlone (<i>Cicindela ohlone</i>)
E	Toad, arroyo (=arroyo southwestern) (<i>Bufo californicus (=microscaphus)</i>)
T(S/A)	Tortoise, desert (outside/taken from Sonoran Desert) (<i>Gopherus agassizii</i>)
T	Tortoise, desert (U.S.A., except in Sonoran Desert) (<i>Gopherus agassizii</i>)
T	Towhee, Inyo California (<i>Pipilo crissalis eremophilus</i>)
T	Trout, Lahontan cutthroat (<i>Oncorhynchus clarki henshawi</i>)
T	Trout, Little Kern golden (<i>Oncorhynchus aguabonita whitei</i>)
T	Trout, Paiute cutthroat (<i>Oncorhynchus clarki seleniris</i>)
E	Vireo, least Bell's (<i>Vireo bellii pusillus</i>)
E	Vole, Amargosa (<i>Microtus californicus scirpensis</i>)
E	Whale, blue (<i>Belonoptera musculus</i>)
E	Whale, humpback (<i>Megaptera novaeangliae</i>)
T	Whipnake (=striped racer), Alameda (<i>Masticophis lateralis eurynanthus</i>)
T	Wolf, gray Western Distinct Population Segment (<i>Canis lupus</i>)
E	Woodrat, riparian (=San Joaquin Valley) (<i>Neotoma fuscipes riparia</i>)

CNDDDB RANKS

CNDDDB ranks are shorthand formulas that provide information on the rarity of a species or subspecies, both throughout its global range and its range within the State. We use the best information available to assign these ranks and they are regularly updated as new information becomes available.

GLOBAL RANKS: Worldwide status of a *full species*: G1 to G5

G1 = Extremely endangered: <6 viable occurrences (EO's) or <1,000 individuals, or < 2,000 acres of occupied habitat

G2 = Endangered: about 6-20 EO's or 1,000 - 3,000 individuals, or 2,000 to 10,000 acres of occupied habitat

G3 = Restricted range, rare: about 21-100 EO's, or 3,000 - 10,000 individuals, or 10,000 - 50,000 acres of occupied habitat

G4 = Apparently secure; some factors exist to cause some concern such as narrow habitat or continuing threats

G5 = Demonstrably secure; commonly found throughout its historic range

STATE RANKS: Statewide status of a *full species or a subspecies*: S1 to S5

Same general definitions as global ranks, but just for the range of the taxa within California.

T-RANKS: Status of a *subspecies* throughout its range: T1 to T5

A subspecies is given a T-rank. This is attached to the G-rank for the full species. The S-rank, in this case, will refer to the status of the subspecies within California. The T-rank has the same general definitions as the global ranks.

EXAMPLES:

Island Fox (*Urocyon littoralis*) – G1S1

G1 – *Urocyon littoralis* is extremely endangered throughout its worldwide range

S1 – It is a California endemic, therefore its range within the state is the same as its worldwide range.

Yuma clapper rail (*Rallus longirostris yumanensis*) – G5T3S1

G5 – *Rallus longirostris* is common in North American coastal salt marshes and the range extends down into South America.

T3 – *R. l. yumanensis* is rare and has a restricted range within Mexico, Arizona, and California

S1 – This subspecies is extremely endangered within California

Santa Cruz long-toed salamander (*Ambystoma macrodactylum croceum*) – G5T1S1

G5 – *Ambystoma macrodactylum* is found throughout the Pacific northwest.

T1 – The subspecies *A. m. croceum* is found only in California and is extremely endangered throughout its range.

S1 – This subspecies is extremely endangered within California

OTHER NOTATIONS: applicable to G-ranks, S-ranks, and T-ranks

G1G3 = proper rank is most likely within this range of ranks

G2? = proper rank is probably G2

G? = we don't have enough information to rank the species

GH = all sites are historical; this species may be extinct, but further field work is needed

GX = species is extinct (SX = species is extirpated from California)

GXC = species is extinct in the wild, but it exists in cultivation

G2Q = species is endangered but there is some taxonomic question about the species

Special Animals list – July 2003

	<u>CNDDB</u> <u>RANK</u>	<u>CESA</u>	<u>ESA</u>	<u>IUCN</u>	<u>OTHER</u>
INSECTA, Order Mecoptera (scorpionflies)					
<i>Orbittacus obscurus</i> Gold rush hanging fly	G1S1		(FSC)		
INSECTA, Order Diptera (flies)					
+ <i>Brennania belkini</i> Belkin's dune tabanid fly	G1G2S1S2			VU/A2ce	
+ <i>Efferia antiochi</i> Antioch efferian robberfly	G1G3S1S3		(FSC)		
<i>Metapogon hurdi</i> Hurd's metapogon robberfly	G1G3S1S3		(FSC)		
+ <i>Paracoenia calida</i> Wilbur Springs shore fly	G1S1		(FSC)		
+ <i>Rhaphiomidas terminatus abdominalis</i> Delhi Sands flower-loving fly	G1T1S1		FE		
INSECTA, Order Lepidoptera (butterflies & moths)					
+ <i>Adela oplerella</i> Opler's longhorn moth	G2G3S2S3		(FSC)		
+ <i>Apodemia mormo langei</i> Lange's metalmark butterfly	G5T1S1		FE		
<i>Carolella busckana</i> Busck's gall moth	G1G3S1S3				
+ <i>Carterocephalus palaemon magnus</i> Sonoma arctic skipper	G5T1S1		(FSC)		
<i>Cercyonis pegala carsonensis</i> Carson Valley wood nymph butterfly	G5T2S1S2				
<i>Coenonympha tullia yontockett</i> Yontocket satyr butterfly	G5T1T2S1S2				
+ <i>Danaus plexippus</i> (wintering sites) Monarch butterfly	G4S3				
+ <i>Euchloe hyantis andrewsi</i> Andrew's marble butterfly	G3G4T1S1				
+ <i>Eucosma hennei</i> Henne's eucosman moth	G1S1				
+ <i>Euphilotes battoides allyni</i> El Segundo blue butterfly	G5T1S1		FE		
<i>Euphilotes battoides comstocki</i> Comstock's blue butterfly	G5T1T3S1S3				
+ <i>Euphilotes enoptes smithi</i> Smith's blue butterfly	G5T1T2S1S2		FE		
+ <i>Euphydryas editha bayensis</i> Bay checkerspot butterfly	G5T1S1		FT		
<i>Euphydryas editha monoensis</i> Mono checkerspot butterfly	G5T3?S1S3				
+ <i>Euphydryas editha quino</i> Quino checkerspot butterfly	G5T1S1		FE		
<i>Euphyes vestris barbisoni</i> Dun skipper	G5T1S1				
+ <i>Euproserpinus euterpe</i> Kern primrose sphinx moth	G1S1		FT		
+ <i>Glaucopsyche lygdamus paloverdesensis</i> Palos Verdes blue butterfly	G5T1S1		FE		

Special Animals list – July 2003

	<u>CNDDB</u> <u>RANK</u>	<u>CESA</u>	<u>ESA</u>	<u>IUCN</u>	<u>OTHER</u>
INSECTA, Order Orthoptera (grasshoppers, katydids, and crickets)					
+ <i>Ammopelmatus kelsoensis</i> Kelso Jerusalem cricket	G1G3S1S2			VU/B1+2bd	
<i>Ammopelmatus muwu</i> Point Conception Jerusalem cricket	G1G3S1S3			VU/B1+2bd	
<i>Idiostatus kathleenae</i> Pinnacles shieldback katydid	G2G3S1S3				
+ <i>Idiostatus middlekaufi</i> Middlekauf's shieldback katydid	G1G2S1		(FSC)	CR/B1+2bd	
+ <i>Macrobaenetes kelsoensis</i> Kelso giant sand treader cricket	G1S1			VU/B1+2bd	
+ <i>Macrobaenetes valgum</i> Coachella giant sand treader cricket	G1G2S1S2			VU/B1+2bd	
+ <i>Necuba longipennis</i> Santa Monica shieldback katydid	G1G2S1S2			CR/B1+2bd	
<i>Pristocenthophilus</i> sp Samwell Cave cricket	G1G3S1S3			VU/D1+2	
+ <i>Psychomastix deserticola</i> Desert monkey grasshopper	G1G3S1S2			VU/B1+2bd	
+ <i>Stenopelmatus cahullaensis</i> Coachella Valley Jerusalem cricket	G1G2S1S2			VU/B1+2bd	
+ <i>Tetrix sierrana</i> Sierra pygmy grasshopper	G1G2S1S2		(FSC)	VU/D2	
+ <i>Trimerotropis infantilis</i> Zayante band-winged grasshopper	G1S1		FE	EN/A1c	
<i>Trimerotropis occidentaloide</i> Santa Monica Mountains Grasshopper	G1G2S1S2			EN/A1c	
<i>Trimerotropis oculens</i> Lompoc Grasshopper	G1G2S1S2			EN/A1c	
INSECTA, Order Hemiptera (true bugs)					
+ <i>Belostoma saratogae</i> Saratoga Springs belostoman bug	G1S1				
+ <i>Oreovella pege</i> Dry Creek cliff strider bug	G1S1		(FSC)		
+ <i>Pelocoris shosone</i> Amargosa naucorid bug	G1G3S1S2				
+ <i>Saldule usingeri</i> Wilber Springs shorebug	G1S1				
INSECTA, Order Neuroptera (lacewings)					
<i>Nothochrysa californica</i> San Francisco lacewing	G?S?		(FSC)		
+ <i>Olfarces clara</i> Cheeseweed moth lacewing	G1G3S1S3				
INSECTA, Order Coleoptera (beetles)					
+ <i>Aegialia concinna</i> Ciervo aegialian scarab beetle	G1S1		(FSC)	VU/D2	BLM: Sensitive
+ <i>Agabus rumpfi</i> Death Valley agabus diving beetle	G1G3S1				

Special Animals list – July 2003

	<u>CNDD8</u> <u>RANK</u>	<u>CESA</u>	<u>ESA</u>	<u>IUCN</u>	<u>OTHER</u>
AMPHIBIANS (36 taxa)					
AMBYSTOMATIDAE (mole salamanders)					
+ <i>Ambystoma macrodactylum croceum</i> Santa Cruz long-toed salamander	G5T1S1	SE	FE		DFG: Fully protected
+ <i>Ambystoma californiense</i> California tiger salamander Central California DPS ²¹ Santa Barbara County DPS Sonoma County DPS	G2G3S2S3			VU/A2c	DFG: CSC
			FPT ²² FE ²³ FE ²⁴		
RHYACOTRITONIDAE (Olympic salamanders)					
+ <i>Rhyacotriton variegatus</i> Southern torrent salamander	G3G4S2S3		(FSC)		DFG: CSC FS: Sensitive
SALAMANDRIDAE (newts)					
+ <i>Taricha torosa torosa</i> Coast Range newt (Monterey Co. south only)	G5T4S4				DFG: CSC
PLETHODONTIDAE (lungless salamanders)					
+ <i>Batrachoseps major aridus</i> Desert slender salamander	G4T1S1	SE	FE	CR/A2cd	
+ <i>Batrachoseps campi</i> Inyo Mountains slender salamander	G2S2			EN/B1+2a	DFG: CSC FS: Sensitive BLM: Sensitive
+ <i>Batrachoseps gabrieli</i> San Gabriel slender salamander	G2S2				FS: Sensitive
+ <i>Batrachoseps pacificus pacificus</i> Channel Islands slender salamander	G3QT2S2				
<i>Batrachoseps relictus</i> Relictual slender salamander	G2S2		(FSC)		DFG: CSC FS: Sensitive
+ <i>Batrachoseps simatus</i> Kern Canyon slender salamander	G2S2	ST	(FSC)	VU/D2	FS: Sensitive
+ <i>Batrachoseps stebbinsi</i> Tehachapi slender salamander	G2S2	ST	(FSC)	VU/D2	FS: Sensitive BLM: Sensitive
+ <i>Batrachoseps robustus</i> Kern slender salamander	G2S2				FS: Sensitive
+ <i>Batrachoseps</i> sp. 1 Breckenridge Mountain slender salamander	G1QS1		(FSC)		DFG: CSC FS: Sensitive

²¹ DPS = Distinct Vertebrate Population Segment

²² Proposal to list the Central California DPS as threatened includes proposal to reclassify the Sonoma County DPS & Santa Barbara County DPS from Endangered to Threatened.

²³ Federal listing refers to the Santa Barbara County DPS.

²⁴ Federal listing refers to the Sonoma County DPS.

Special Animals list – July 2003

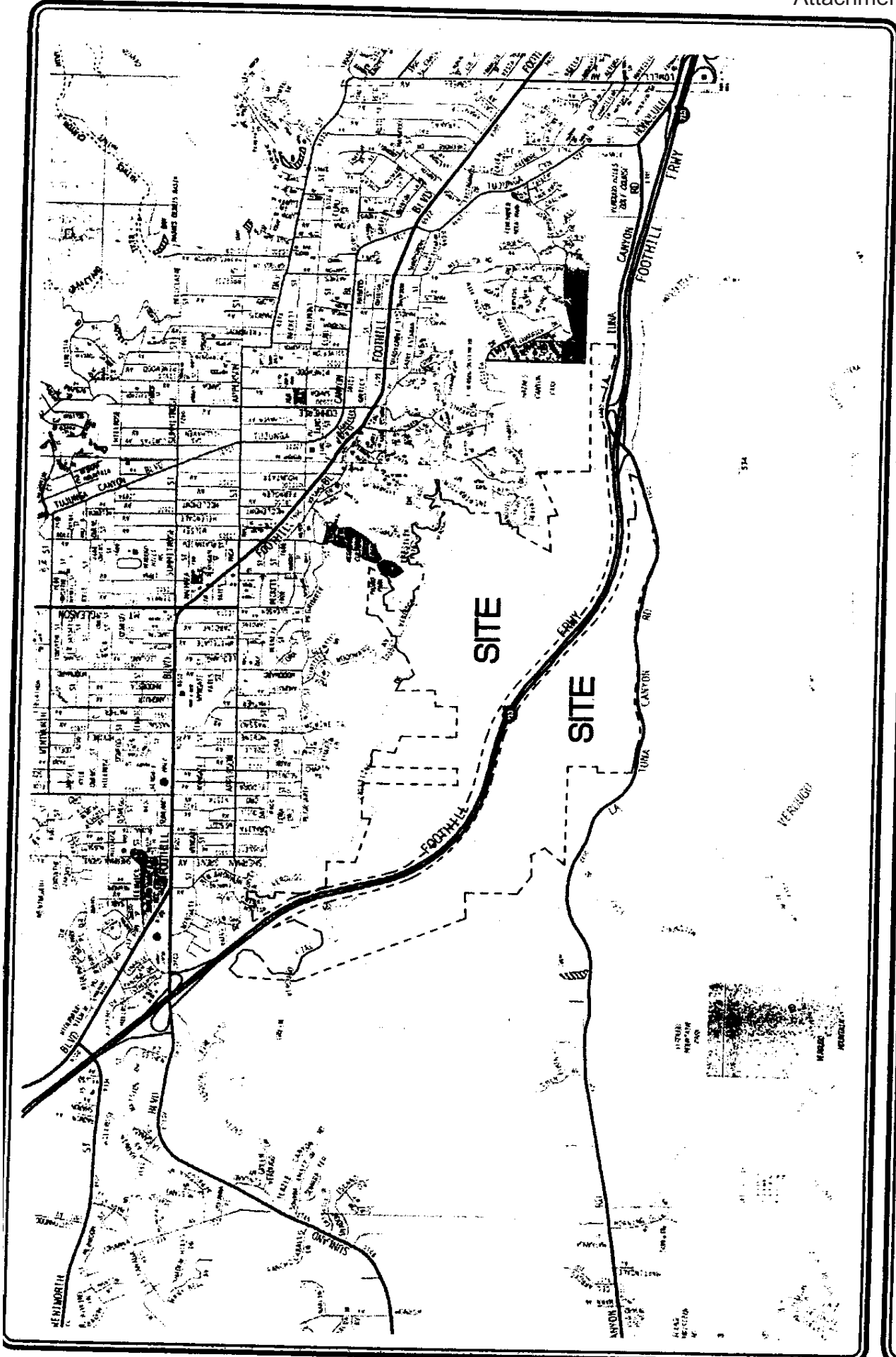
	<u>CNDD</u> <u>RANK</u>	<u>CESA</u>	<u>ESA</u>	<u>IUCN</u>	<u>OTHER</u>
+ <i>Uma notata</i> Colorado Desert fringe-toed lizard	G3QS2?				DFG: CSC BLM: Sensitive
<i>Uma scoparia</i> Mojave fringe-toed lizard	G3G4QS3S4				DFG: CSC BLM: Sensitive
XANTUSIIDAE (night lizards)					
<i>Xantusia gracilis</i> Sandstone night lizard	G1S1				DFG: CSC
+ <i>Xantusia riversiana</i> Island night lizard	G1S1		FT	VU/D2	
<i>Xantusia vigilis sierrae</i> Sierra night lizard	G5T1S1		(FSC)		DFG: CSC BLM: Sensitive FS: Sensitive
SCINCIDAE (skinks)					
+ <i>Eumeces skiltonianus interparietalis</i> Coronado skink	G5T2T3QS1S2				DFG: CSC BLM: Sensitive
TEIIDAE (whiptails and relatives)					
+ <i>Aspidoscelis hyperythra beldingi</i> Beldings orange-throated whiptail	G5T2S2			DD (full species)	DFG: CSC
+ <i>Aspidoscelis tigris stajneri</i> Coastal western whiptail	G5T3T4S2S3				
ANGUIDAE (alligator lizards)					
+ <i>Elgaria (=Gerrhonotus) panamintinus</i> Panamint alligator lizard	G1G2S1S2			VU/D2	DFG: CSC FS: Sensitive BLM: Sensitive
ANNIELLIDAE (Legless lizards)					
+ <i>Anniella pulchra pulchra</i> Silvery legless lizard	G3G4T3T4QS3		(FSC)		DFG: CSC FS: Sensitive (full species)
+ <i>Anniella pulchra nigra</i> Black legless lizard	G3G4T2T3QS2				DFG: CSC FS: Sensitive (full species)
HELODERMATIDAE (venomous lizards)					
+ <i>Heloderma suspectum cinctum</i> Banded gila monster (population west of Colorado River)	G4T4S1			VU/A2cd (full species)	DFG: CSC BLM: Sensitive (full species)
BOIDAE (boas)					
+ <i>Charina umbratica</i> Southern rubber boa	G5S2S3	ST	(FSC)		FS: Sensitive

Special Animals list -- July 2003

	<u>CNDD8 RANK</u>	<u>CESA</u>	<u>ESA</u>	<u>IUCN</u>	<u>OTHER</u>
+ <i>Charina trivirgata</i> Rosy boa	G4G5S3S4		(FSC)		BLM: Sensitive FS: Sensitive (ssp. <i>Roseofusca</i>)
COLUBRIDAE (colubrids)					
<i>Bogertiphis rosaliae</i> Baja California rat snake	G4S1				DFG: CSC
+ <i>Diadophis punctatus modestus</i> San Bernardino ringneck snake	G5T2T3S2?				FS: Sensitive
+ <i>Diadophis punctatus similis</i> San Diego ringneck snake	G5T2T3S2?				FS: Sensitive
+ <i>Lampropeltis zonata</i> California mountain kingsnake (San Bernardino population)	G4G5S2?				DFG: CSC FS: Sensitive
+ <i>Lampropeltis zonata</i> California mountain kingsnake (San Diego population)	G4G5S1S2				DFG: CSC FS: Sensitive
+ <i>Masticophis flagellum ruddocki</i> San Joaquin whipsnake	G5T2T3S2?		(FSC)		DFG: CSC
+ <i>Masticophis lateralis euryxanthus</i> Alameda whipsnake (=striped racer)	G4T2S2	ST	FT		
<i>Pituophis catenifer pumilus</i> Santa Cruz gopher snake	G5T1T2S1?				DFG: CSC
+ <i>Salvadora hexalepis virgultea</i> Coast patch-nosed snake	G5T3S2S3				DFG: CSC
+ <i>Thamnophis gigas</i> Giant garter snake	G2G3S2S3	ST	FT	VU/A1cde+ 2cde	
+ <i>Thamnophis hammondi</i> Two-striped garter snake	G2G3S2			DD	DFG: CSC FS: Sensitive BLM: Sensitive
+ <i>Thamnophis sirtalis tetrataenia</i> San Francisco garter snake	G5T2S2	SE	FE		
<i>Thamnophis sirtalis</i> ssp. South Coast garter snake	G5T1T2S1S2				DFG: CSC
VIPERIIDAE (vipers)					
+ <i>Crotalus ruber ruber</i> Northern red-diamond rattlesnake	G4T3T4S2?				DFG: CSC

Special Animals list – July 2003

	<u>CNDDDB</u> <u>RANK</u>	<u>CESA</u>	<u>ESA</u>	<u>IUCN</u>	<u>OTHER</u>
+ <i>Hesperia mirimae longaevicola</i> White Mountains skipper	G2G3T1S1				
<i>Hesperopsis gracieae</i> MacNeill sooty wing skipper	G2G3S1S3				
+ <i>Icaricia icarioides albihalos</i> White Mountains icarioides blue butterfly	G5T2?S2?				
+ <i>Icaricia icarioides missionensis</i> Mission blue butterfly	G5T1S1		FE		
<i>Icaricia icarioides moroensis</i> Morro Bay blue butterfly	G5T1T3S1S3				
+ <i>Icaricia icarioides parapheres</i> Point Reyes blue butterfly	G5T1S1		(FSC)		
+ <i>Incisalia mossii bayensis</i> San Bruno elfin butterfly	G3G4T1S1		FE		
+ <i>Incisalia mossii hidakupa</i> San Gabriel Mountains elfin butterfly	G3G4T1T2S1S2				
<i>Incisalia mossii marinensis</i> Marin Elfin butterfly	G3G4T1S1		(FSC)		
+ <i>Lycaeides argyrognomon lotis</i> Lotis blue butterfly	G5T1S1		FE		
+ <i>Lycaena hermes</i> Hermes copper butterfly	G1G2S1S2			VUD2	
<i>Lycaena rubidus incanus</i> White Mountains copper butterfly	G5T1S1				
<i>Mitoura thornei</i> Thorne's hairstreak butterfly	G1S1				
+ <i>Panoquina errans</i> Wandering (=Saltmarsh) skipper	G4G5S1			LRnt	
+ <i>Philotiella speciosa bohartorum</i> Bohart's blue butterfly	G3T1S1		(FSC)		
<i>Plebulina emigdonis</i> San Emigdio blue butterfly	G2G3S2S3		(FSC)		
+ <i>Plebejus saepiolus albomontanus</i> White Mountains saepiolus blue butterfly	G5T2S1S2				
+ <i>Plebejus saepiolus aureolus</i> San Gabriel Mountains blue butterfly	G5T1S1				
<i>Polites mardon</i> Mardon skipper	G2G3S1		FC		
<i>Polites sabuleti albomontana</i> White Mountains sandhill skipper	G5T2S1S2				
<i>Pseudocopaeodes eunus eunus</i> Alkali (=wandering) skipper	G3G4T1T3S1S3				
<i>Pseudocopaeodes eunus obscurus</i> Carson wandering skipper	G3G4T1S1		FE		
<i>Pyrgus ruralis lagunae</i> Laguna Mountains skipper	G5T1S1		FE		
+ <i>Speyeria adiasste adiasste</i> Unsilvered fritillary butterfly	G1G2T1S1		(FSC)		
+ <i>Speyeria callippe callippe</i> Callippe silverspot butterfly	G5T1S1		FE		
<i>Speyeria egleis fehachapina</i> Tehachapi Mountain silverspot butterfly	G5T1T2S1S2		(FSC)		
+ <i>Speyeria nokomis carsonensis</i> Carson Valley silverspot butterfly	G3T1S1				



1

VICINITY MAP

CANYON HILLS PROJECT

MAP SOURCE: THOMAS BROS. GUIDE



NOT TO SCALE

**LINSCOTT
LAW &
GREENSPAN**
ENGINEERS

CWHR Wildlife Habitats Crosswalked with CalVeg

ALKALI DESERT SCRUB

ARROWWEED (DE)
GREASEWOOD (BG)
MIXED DESERT SHRUB (DX)
SALTBUSH (BC)
SHADSCALE (DS)

ALPINE DWARF-SHRUB

CUSHION PLANT (AC)
MIXED ALPINE SCRUB (AX)

ANNUAL GRASS

ANNUAL GRASS/FORBS (HG)
GRASS (UNDETERMINED SPECIES) (GR)

ASPEN

QUAKING ASPEN (QQ)

BARREN

BARREN (BA)
SNOWICE (SN)

BITTERBRUSH

BITTERBRUSH (BB)
CURLLEAF MOUNTAIN MAHOGANY (BM)
MIXED DESERT SHRUB (DX)
RABBITBRUSH (BR)

BLUE OAK WOODLAND

BLUE OAK (QD)

BLUE OAK-FOOTHILL PINE

BLUE OAK (QD)
CALIFORNIA BUCKEYE (QI)
GRAY (FOOTHILL) PINE (PD)

CHAMISE-REDSHANK CHAPARRAL

CHAMISE (CA)
FOOTHILL MIXED CHAPARRAL (CC)
RED SHANK (CR)
SOUTHERN MIXED CHAPARRAL (CD)
WEDGELEAF CEANOTHUS (CL)

CLOSED-CONE PINE-CYPRESS

BAKER CYPRESS (MO)
BISHOP PINE (PM)

CUYAMACA CYPRESS (MC)
GOWEN CYPRESS (MG)
KNOBSCONE PINE (KP)
MCNAB CYPRESS (MN)
MONTEREY CYPRESS (MM)
MONTEREY PINE (PR)
PIUTE CYPRESS (MI)
PYGMY CYPRESS (MY)
SANTA CRUZ CYPRESS (MZ)
SARGENT CYPRESS (MS)
SHORE PINE (PS)
TECATE CYPRESS (MT)
TORREY PINE (PT)

COASTAL OAK WOODLAND

BLACK OAK - MADRONE (QH)
BLACK OAK (QK)
CALIFORNIA BAY - BUCKEYE (QB)
CALIFORNIA BAY (QU)
CALIFORNIA BUCKEYE (QI)
CALIFORNIA COAST LIVE OAK - CALIFORNIA BAY (NB)
CALIFORNIA WALNUT (QV)
CANYON LIVE OAK (QC)
COAST LIVE OAK (QA)
ENGLEMANN OAK (QN)
INTERIOR LIVE OAK (QW)
LIVE OAK - MADRONE (Q1)
OREGON WHITE OAK (QG)
TANOAK - MADRONE (QT)

COASTAL SCRUB

BLUEBLOSSOM CEANOTHUS (SC)
BUCKWHEAT (WHITE SAGE) (SB)
CALIFORNIA SAGEBRUSH (SS)
COYOTE BRUSH (CK)
FORT BRAGG MANZANITA (AN)
GORSE (UL)
MANZANITA CHAPARRAL (SD)
NORTHERN COASTAL SHRUB (NC)
SAGE (SP)
SALAL (CB)
SHRUB CALIFORNIA BAY (NC)

DECIDUOUS ORCHARD

AGRICULTURAL (AG)

DESERT RIPARIAN

ARROWWEED (DE)
FREMONT COTTONWOOD (QF)
MESQUITE (UM)
TAMARISK (UT)
WILLOW (QO)

DESERT SCRUB

BLACKBUSH (DA)
BUCKWHEAT (DB)
CREOSOTE (DL)
CROTON (DD)
MIXED DESERT SHRUB (DX)
RABBITBRUSH (BR)
TUCKER SCRUB OAK (CT)

DESERT SUCCULENT SHRUB

CHOLLA (DC)
MIXED DESERT SHRUB (DX)
OCOTILLO (DO)

DESERT WASH

CATCLAW ACACIA (UL)
DESERT IRONWOOD (UI)
MESQUITE (UM)
MIXED DESERT SHRUB (DX)
PALOVERDE (UP)
SMOKE TREE - DESERT WILLOW (UX)

DOUGLAS-FIR

BIGCONE DOUGLAS FIR (DM)
DOUGLAS FIR - CANYON LIVE OAK (DQ)
DOUGLAS FIR - GRAND FIR (DG)
DOUGLAS FIR - PINE (DP)
DOUGLAS FIR - TANOAK - MADRONE (DT)
DOUGLAS FIR - WHITE FIR (DW)
GRAND FIR (GF)
PACIFIC DOUGLAS FIR (DF)
PORT-ORFORD CEDAR (PO)
REDWOOD - DOUGLAS FIR (RD)
SITKA SPRUCE - GRAND FIR (SG)
SITKA SPRUCE - REDWOOD (SR)
SITKA SPRUCE (SK)

DRYLAND GRAIN CROPS

AGRICULTURAL (AG)

EASTSIDE PINE

EASTSIDE (YELLOW) PINE (EP)

MIXED CONIFER - PINE (MP)

PONDEROSA PINE (PP)

ESTUARINE

WATER (WA)

EUCALYPTUS

EUCALYPTUS (QZ)

EVERGREEN ORCHARD

AGRICULTURAL (AG)

FRESH EMERGENT WETLAND

CATTAIL - SEDGE (HT)

WET MEADOWS GRASS/SEDE/RUSH (HJ)

IRRIGATED GRAIN CROPS

AGRICULTURAL (AG)

IRRIGATED HAYFIELD

AGRICULTURAL (AG)

IRRIGATED ROW AND FIELD CROPS

AGRICULTURAL (AG)

JEFFREY PINE

JEFFREY PINE (JP)

JOSHUA TREE

JOSHUA TREE (UJ)

JUNIPER

WESTERN JUNIPER (WJ)

KLAMATH MIXED CONIFER

BREWER SPRUCE (PB)

ENGLEMANN SPRUCE (EA)

MIXED CONIFER - FIR (MF)

MIXED CONIFER - KLAMATH (MK)

MIXED CONIFER - PINE (MP)

PONDEROSA PINE - WHITE FIR (PW)

PORT-ORFORD CEDAR (PO)

LACUSTRINE

WATER (WA)

LODGEPOLE PINE

LODGEPOLE PINE (LP)

LOW SAGE

LOW SAGEBRUSH (BL)

MARINE

NO CORRESPONDING TYPE IN THIS SERIES

MIXED CHAPARRAL

CHAMISE (CA)

DEERBRUSH (CI)

FOOTHILL MIXED CHAPARRAL (CC)

FORT BRAGG MANZANITA (AN)

MANZANITA CHAPARRAL (SD)

NORTHERN MIXED CHAPARRAL (CQ)

SAGE (SP)

SCRUB OAK (CS)

SEMIDESERT CHAPARRAL (CZ)

SOUTHERN MIXED CHAPARRAL (CD)

TUCKER SCRUB OAK (CT)

ULTRAMAFIC MIXED SHRUB (C1)

WEDGELEAF CEANOTHUS (CL)

WHITELEAF MANZANITA (CW)

MONTANE CHAPARRAL

BREWER OAK (CJ)

CURLLEAF MOUNTAIN MAHOGANY (BM)

DEERBRUSH (CI)

GREENLEAF MANZANITA (CG)

HUCKLEBERRY OAK (CH)

MANZANITA CHAPARRAL (SD)

MONTANE MIXED CHAPARRAL (CX)

PINEMAT MANZANITA (CN)

SNOWBRUSH (TOBACCO BRUSH) (CV)

UPPER MONTANE MIXED SHRUB (CM)

WEDGELEAF CEANOTHUS (CL)

WHITELEAF MANZANITA (CW)

MONTANE HARDWOOD

BIGCONE DOUGLAS FIR (DM)

BLACK OAK - MADRONE (QH)

BLACK OAK (QK)

CALIFORNIA BAY - BUCKEYE (QB)

CALIFORNIA BAY (QU)

CALIFORNIA BUCKEYE (QI)

CANYON LIVE OAK (QC)

DOUGLAS FIR - CANYON LIVE OAK (DQ)
DOUGLAS FIR - TANOAK - MADRONE (DT)
INTERIOR LIVE OAK (QW)
LIVE OAK - MADRONE (Q1)
MAPLE - DOGWOOD (QM)
MIXED CONIFER - PINE (MP)
MIXED HARDWOODS (NX)
MOUNTAIN ALDER (TA)
OREGON WHITE OAK (QG)
PACIFIC DOUGLAS FIR (DF)
PONDEROSA PINE (PP)
REDWOOD - DOUGLAS FIR (RD)
REDWOOD (RW)
SANTA LUCIA FIR (AB)
TANOAK - MADRONE (QT)
TREE CHINQUAPIN (TC)

MONTANE HARDWOOD-CONIFER

BIGCONE DOUGLAS FIR (DM)
COULTER PINE (PC)
DOUGLAS FIR - CANYON LIVE OAK (DQ)
DOUGLAS FIR - PINE (DP)
DOUGLAS FIR - TANOAK - MADRONE (DT)
MIXED CONIFER - PINE (MP)
MIXED HARDWOODS (NX)
MOUNTAIN ALDER (TA)
PACIFIC DOUGLAS FIR (DF)
PONDEROSA PINE (PP)
PORT-ORFORD CEDAR (PO)
RED ALDER (QR)
REDWOOD - DOUGLAS FIR (RD)
REDWOOD (RW)
SANTA LUCIA FIR (AB)
TREE CHINQUAPIN (TC)

MONTANE RIPARIAN

BLACK COTTONWOOD (QX)
COTTONWOOD - ALDER (QJ)
FREMONT COTTONWOOD (QF)
MAPLE - DOGWOOD (QM)
MOUNTAIN ALDER (TA)
QUAKING ASPEN (QQ)
RED ALDER (QR)

WHITE ALDER (QE)
WILLOW - ALDER (QY)
WILLOW - ASPEN (QS)
WILLOW (QO)

PALM OASIS

FAN PALM (UW)

PASTURE

ANNUAL GRASS/FORBS (HG)
GRASS (UNDETERMINED SPECIES) (GR)

PERENNIAL GRASS

GRASS (UNDETERMINED SPECIES) (GR)
PERENNIAL GRASS (HM)
WET MEADOWS GRASS/SEDGE/RUSH (HJ)

PINYON-JUNIPER

FOURNEEDLE PINYON PINE (PQ)
SINGLELEAF PINYON PINE (PJ)

PONDEROSA PINE

PONDEROSA PINE - WHITE FIR (PW)
PONDEROSA PINE (PP)

RED FIR

RED FIR (RF)

REDWOOD

GRAND FIR (GF)
REDWOOD - DOUGLAS FIR (RD)
REDWOOD (RW)
SITKA SPRUCE - GRAND FIR (SG)
SITKA SPRUCE - REDWOOD (SR)

RICE

AGRICULTURAL (AG)

RIVERINE

WATER (WA)

SAGEBRUSH

BASIN SAGEBRUSH (BS)
CURLLEAF MOUNTAIN MAHOGANY (BM)
MIXED DESERT SHRUB (DX)
RABBITBRUSH (BR)

SALINE EMERGENT WETLAND

CATTAIL - SEDGE (HT)
PICKLEWEED - CORDGRASS (HC)
WET MEADOWS GRASS/SEDGE/RUSH (HJ)

SIERRAN MIXED CONIFER

- BIGTREE (GIANT SEQUOIA) (BT)
- BREWER SPRUCE (PB)
- MIXED CONIFER - FIR (MF)
- MIXED CONIFER - PINE (MP)
- MIXED CONIFER - PINE WITH GIANT SEQUOIA (MB)
- PONDEROSA PINE - WHITE FIR (PW)
- ULTRAMAFIC MIXED CONIFER (MU)

SUBALPINE CONIFER

- BRISTLEcone PINE (BP)
- ENGLEMANN SPRUCE (EA)
- FOXTAIL PINE (FP)
- LIMBER PINE (PL)
- LOGEPOLE PINE (LP)
- MOUNTAIN HEMLOCK (MH)
- SUBALPINE CONIFER (SA)
- WESTERN WHITE PINE (WW)
- WHITEBARK PINE (WB)

URBAN

- URBAN/DEVELOPED (UB)

VALLEY FOOTHILL RIPARIAN

- CALIFORNIA SYCAMORE (QP)
- CALIFORNIA WALNUT (QV)
- FREMONT COTTONWOOD (QF)
- VALLEY OAK (QL)
- WILLOW - ALDER (QY)
- WILLOW (QO)

VALLEY OAK WOODLAND

- CALIFORNIA WALNUT (QV)
- VALLEY OAK (QL)

VINEYARD

- AGRICULTURAL (AG)

WET MEADOW

- CATTAIL - SEDGE (HT)
- WET MEADOWS GRASS/SEDEGE/RUSH (HJ)

WHITE FIR

- MIXED CONIFER - FIR (MF)
- WHITE FIR (WF)

CWHR Wildlife Habitats Crosswalked with CNPS Vegetation Series

ICEPLANT SERIES

ALKALI DESERT SCRUB

ALKALI SACATON SERIES

ALLSCALE SERIES

BUSH SEEPWEED SERIES

CORDGRASS SERIES

DESERT-HOLLY SERIES

FOURWING SALT BUSH SERIES

GREASEWOOD SERIES

HOP-SAGE SERIES

IODINE BUSH SERIES

MIXED SALT BUSH SERIES

SHADSCALE SERIES

SPINESCALE SERIES

WINTER FAT SERIES

ALPINE DWARF-SHRUB

ALPINE HABITAT

HOLODISCUS SERIES

ROTHROCK SAGEBRUSH SERIES

SUBALPINE UPLAND SHRUB HABITAT

ANNUAL GRASSLAND

ANTIOCH DUNES STANDS

CALIFORNIA ANNUAL GRASSLAND SERIES

CHEATGRASS SERIES

NORTHERN BASALT FLOW VERNAL POOLS

NORTHERN CLAYPAN VERNAL POOLS

NORTHERN HARDPAN VERNAL POOLS

NORTHERN VOLCANIC ASHFLOW VERNAL POOLS

NORTHERN VOLCANIC MUDFLOW VERNAL POOLS

SAN DIEGO MESA VERNAL POOLS

SAN JACINTO VALLEY VERNAL POOLS

SANTA ROSA PLATEAU VERNAL POOLS

ASPEN

ASPEN SERIES

~~**BARREN**~~

NO CORRESPONDING TYPE IN THIS SERIES

BITTERBRUSH

BITTERBRUSH SERIES

BLUE OAK WOODLAND

BLUE OAK SERIES

CALIFORNIA BUCKEYE SERIES

INTERIOR LIVE OAK SERIES

MIXED OAK SERIES

BLUE OAK-FOOTHILL PINE

FOOTHILL PINE SERIES

INTERIOR LIVE OAK SERIES

MIXED OAK SERIES

CHAMISE-REDSHANK CHAPARRAL

CHAMISE - MISSION-MANZANITA - WOOLLYLEAF CEANOTHUS SERIES

CHAMISE SERIES

CHAMISE-BIGBERRY MANZANITA SERIES

CHAMISE-BLACK SAGE SERIES

CHAMISE-CUPLEAF CEANOTHUS SERIES

CHAMISE-EASTWOOD MANZANITA SERIES

CHAMISE-HOARYLEAF CEANOTHUS SERIES

CHAMISE-WEDGELEAF CEANOTHUS SERIES

CHAMISE-WHITE SAGE SERIES

RED SHANK - BIRCHLEAF MOUNTAIN-MAHOGANY SERIES

RED SHANK SERIES

RED SHANK-CHAMISE SERIES

SCRUB OAK - CHAMISE SERIES

CLOSED-CONE PINE-CYPRESS

BAKER CYPRESS STANDS

BEACH PINE SERIES

BISHOP PINE SERIES

CUYAMACA CYPRESS STANDS

GOWEN CYPRESS STANDS

KNOBCONE PINE SERIES

ASPEN

ASPEN SERIES

BARREN

NO CORRESPONDING TYPE IN THIS SERIES

BITTERBRUSH

BITTERBRUSH SERIES

BLUE OAK WOODLAND

BLUE OAK SERIES

CALIFORNIA BUCKEYE SERIES

INTERIOR LIVE OAK SERIES

MIXED OAK SERIES

BLUE OAK-FOOTHILL PINE

FOOTHILL PINE SERIES

INTERIOR LIVE OAK SERIES

MIXED OAK SERIES

CHAMISE-REDSHANK CHAPARRAL

CHAMISE - MISSION-MANZANITA - WOOLLYLEAF CEANOTHUS SERIES

CHAMISE SERIES

CHAMISE-BIGBERRY MANZANITA SERIES

CHAMISE-BLACK SAGE SERIES

CHAMISE-CUPLEAF CEANOTHUS SERIES

CHAMISE-EASTWOOD MANZANITA SERIES

CHAMISE-HOARYLEAF CEANOTHUS SERIES

CHAMISE-WEDGELEAF CEANOTHUS SERIES

CHAMISE-WHITE SAGE SERIES

RED SHANK - BIRCHLEAF MOUNTAIN-MAHOGANY SERIES

RED SHANK SERIES

RED SHANK-CHAMISE SERIES

SCRUB OAK - CHAMISE SERIES

CLOSED-CONE PINE-CYPRESS

BAKER CYPRESS STANDS

BEACH PINE SERIES

BISHOP PINE SERIES

CUYAMACA CYPRESS STANDS

GOWEN CYPRESS STANDS

KNOBCONE PINE SERIES

MCNAB CYPRESS SERIES

MONTEREY CYPRESS STANDS

MONTEREY PINE SERIES

PIUTE CYPRESS STANDS

PYGMY CYPRESS SERIES

SANTA CRUZ CYPRESS STANDS

SARGENT CYPRESS SERIES

TECATE CYPRESS STANDS

TORREY PINE STANDS

COASTAL OAK WOODLAND

BLACK OAK SERIES

CALIFORNIA BAY SERIES

CALIFORNIA BUCKEYE SERIES

CALIFORNIA WALNUT SERIES

CATALINA IRONWOOD STANDS

COAST LIVE OAK SERIES

ENGELMANN OAK SERIES

HOLLYLEAF CHERRY STANDS

ISLAND OAK SERIES

MIXED OAK SERIES

OREGON WHITE OAK SERIES

COASTAL SCRUB

BIRCHLEAF MOUNTAIN-MAHOGANY - CA BUCKWHEAT SERIES

BLACK SAGE SERIES

BLUE BLOSSOM SERIES

BRITTLEBUSH SERIES

BROOM SERIES

CALIFORNIA BUCKWHEAT SERIES

CALIFORNIA BUCKWHEAT-WHITE SAGE SERIES

CALIFORNIA ENCELIA SERIES

CALIFORNIA SAGEBRUSH SERIES

CALIFORNIA SAGEBRUSH-BLACK SAGE SERIES

CALIFORNIA SAGEBRUSH-CALIFORNIA BUCKWHEAT SERIES

CHAMISE-BLACK SAGE SERIES

CHAMISE-WHITE SAGE SERIES

COAST PRICKLY-PEAR SERIES

COYOTE BRUSH SERIES

DUNE LUPINE-GOLDENBUSH SERIES
MIXED SAGE SERIES
PAMPAS GRASS SERIES
PURPLE SAGE SERIES
SALAL-BLACK HUCKLEBERRY SERIES
SAND-VERBENA - BEACH BURSAGE SERIES
SCALEBROOM SERIES
SUMAC SERIES
WHITE SAGE SERIES
YELLOW BUSH LUPINE SERIES

DECIDUOUS ORCHARD

NO CORRESPONDING TYPE IN THIS SERIES

DESERT RIPARIAN

ARROW WEED SERIES
ARROYO WILLOW SERIES
BLACK WILLOW SERIES
FREMONT COTTONWOOD SERIES
MESQUITE SERIES
MIXED WILLOW SERIES
MULEFAT SERIES
NARROWLEAF WILLOW SERIES
RED WILLOW SERIES
TAMARISK SERIES

DESERT SCRUB

ALL-THORN STANDS
BIG GALLETIA SERIES
BLACK BUSH SERIES
BLADDERPOD-CA EPHEDRA-NARROWLEAF GOLDENBUSH SERIES
BRITTLEBUSH SERIES
BRITTLEBUSH-WHITE BURSAGE SERIES
CALIFORNIA BUCKWHEAT SERIES
CREOSOTE BUSH SERIES
CREOSOTE BUSH-WHITE BURSAGE SERIES
CRUCIFIXION-THORN STANDS
DESERT NEEDLEGRASS SERIES
DESERT SAND-VERBENA SERIES

DESERT-HOLLY SERIES

HOP-SAGE SERIES

SCALEBROOM SERIES

WHITE BURSAGE SERIES

DESERT SUCCULENT SCRUB

FOOTHILL PALO VERDE-SAGUARO SERIES

DESERT SUCCULENT SHRUB

ELEPHANT TREE STANDS

MOJAVE YUCCA SERIES

NOLINA SERIES

OCOTILLO SERIES

TEDDY-BEAR CHOLLA SERIES

DESERT WASH

BLUE PALO VERDE-IRONWOOD-SMOKE TREE SERIES

CATCLAW ACACIA SERIES

FOOTHILL PALO VERDE-SAGUARO SERIES

MESQUITE SERIES

SCALEBROOM SERIES

DOUGLAS-FIR

DOUGLAS-FIR - TANOAK SERIES

DOUGLAS-FIR SERIES

PORT ORFORD-CEDAR SERIES

WESTERN HEMLOCK SERIES

DRYLAND GRAIN CROPS

NO CORRESPONDING TYPE IN THIS SERIES

EASTSIDE PINE

JEFFREY PINE SERIES

JEFFREY PINE-PONDEROSA PINE SERIES

PONDEROSA PINE SERIES

WASHOE PINE SERIES

ESTUARINE

NO CORRESPONDING TYPE IN THIS SERIES

EUCALYPTUS

EUCALYPTUS SERIES

EVERGREEN ORCHARD

5

NO CORRESPONDING TYPE IN THIS SERIES

FRESHWATER EMERGENT WETLAND

BEAKED SEDGE SERIES
BULRUSH SERIES
BULRUSH-CATTAIL SERIES
BUR-REED SERIES
CATTAIL SERIES
COMMON REED SERIES
DUCKWEED SERIES
GIANT REED SERIES
MOSQUITO FERN SERIES
PONDWEEDS WITH FLOATING LEAVES SERIES
PONDWEEDS WITH SUBMERGED LEAVES SERIES
QUILLWORT SERIES
SEdge SERIES
SPIKERUSH SERIES
TUFTED HAIRGRASS SERIES
YELLOW POND-LILY SERIES

IRRIGATED GRAIN CROPS

NO CORRESPONDING TYPE IN THIS SERIES

IRRIGATED HAYFIELD

NO CORRESPONDING TYPE IN THIS SERIES

IRRIGATED ROW AND FIELD CROPS

NO CORRESPONDING TYPE IN THIS SERIES

JEFFREY PINE

JEFFREY PINE SERIES
JEFFREY PINE-PONDEROSA PINE SERIES

JOSHUA TREE

JOSHUA TREE SERIES

JUNIPER

CALIFORNIA JUNIPER SERIES
MOUNTAIN JUNIPER SERIES
UTAH JUNIPER SERIES
WESTERN JUNIPER SERIES

KLAMATH MIXED CONIFER

ALASKA YELLOW-CEDAR STANDS

6

DOUGLAS-FIR - PONDEROSA PINE SERIES

ENGELMANN SPRUCE SERIES

ENRICHED KLAMATH MOUNTAINS STANDS

INCENSE CEDAR SERIES

MIXED CONIFER SERIES

PACIFIC SILVER FIR STANDS

PORT ORFORD-CEDAR SERIES

SUBALPINE FIR SERIES

WESTERN WHITE PINE SERIES

LACUSTRINE

NO CORRESPONDING TYPE IN THIS SERIES

LOGEPOLE PINE

LOGEPOLE PINE SERIES

LOW SAGE

BLACK SAGEBRUSH SERIES

LOW SAGEBRUSH SERIES

LOW SAGEBRUSH

PARRY RABBITBRUSH SERIES

MARINE

MIXED CHAPARRAL

BIGBERRY MANZANITA SERIES

BIGPOD CEANOTHUS SERIES

BIGPOD CEANOTHUS-BIRCHLEAF MOUNTAIN-MAHOGANY SERIES

BIGPOD CEANOTHUS-HOLLYLEAF REDBERRY SERIES

BIRCHLEAF MOUNTAIN-MAHOGANY - CA BUCKWHEAT SERIES

BIRCHLEAF MOUNTAIN-MAHOGANY SERIES

BLADDERPOD-CA EPHEDEA-NARROWLEAF GOLDENBUSH SERIES

BLUE BLOSSOM SERIES

BREWER OAK SERIES

BROOM SERIES

CANYON LIVE OAK SHRUB SERIES

CHAMISE - MISSION-MANZANITA - WOOLLYLEAF CEANOTHUS SERIES

CHAMISE-BIGBERRY MANZANITA SERIES

CHAMISE-CUPLEAF CEANOTHUS SERIES

CHAMISE-EASTWOOD MANZANITA SERIES

CHAMISE-HOARYLEAF CEANOTHUS SERIES
CHAMISE-WEDGELEAF CEANOTHUS SERIES
CHAPARRAL WHITETHORN SERIES
CUPLEAF CEANOTHUS-FREMONTIA-OAK SERIES
DEERBRUSH SERIES
EASTWOOD MANZANITA SERIES
HAIRYLEAF CEANOTHUS SERIES
HOARYLEAF CEANOTHUS SERIES
INTERIOR LIVE OAK SHRUB SERIES
INTERIOR LIVE OAK-CANYON LIVE OAK SHRUB SERIES
INTERIOR LIVE OAK-CHAPARRAL WHITETHORN SHRUB SERIES
INTERIOR LIVE OAK-SCRUB OAK SHRUB SERIES
IONE MANZANITA SERIES
LEATHER OAK SERIES
MIXED SCRUB OAK SERIES
SCRUB OAK - BIRCHLEAF MOUNTAIN-MAHOGANY SERIES
SCRUB OAK - CHAMISE SERIES
SCRUB OAK - CHAPARRAL WHITETHORN SERIES
SCRUB OAK SERIES
SUMAC SERIES
WEDGELEAF CEANOTHUS SERIES
WHITELEAF MANZANITA SERIES
WOOLLYLEAF MANZANITA SERIES

MONTANE CHAPARRAL

BUSH CHINQUAPIN SERIES
GREENLEAF MANZANITA SERIES
HOLODISCUS SERIES
HUCKLEBERRY OAK SERIES
MOUNTAIN WHITETHORN SERIES
SADLER OAK SERIES
TOBACCO BRUSH SERIES
WEDGELEAF CEANOTHUS SERIES
WHITELEAF MANZANITA SERIES

MONTANE HARDWOOD

BLACK OAK SERIES
BREWER OAK SERIES
CALIFORNIA BUCKEYE SERIES

8

CANYON LIVE OAK SERIES

INTERIOR LIVE OAK SERIES

MIXED OAK SERIES

OREGON WHITE OAK SERIES

RED ALDER SERIES

TANOAK SERIES

MONTANE HARDWOOD-CONIFER

BIGCONE DOUGLAS-FIR - CANYON LIVE OAK SERIES

BLACK OAK SERIES

CANYON LIVE OAK SERIES

COULTER PINE-CANYON LIVE OAK SERIES

DOUGLAS-FIR - TANOAK SERIES

MIXED OAK SERIES

OREGON WHITE OAK SERIES

SANTA LUCIA FIR SERIES

TANOAK SERIES

MONTANE RIPARIAN

BLACK COTTONWOOD SERIES

CALIFORNIA SYCAMORE SERIES

MIXED WILLOW SERIES

MONTANE WETLAND SHRUB HABITAT

MOUNTAIN ALDER SERIES

MOUNTAIN HEATHER-BILBERRY SERIES

NARROWLEAF WILLOW SERIES

PACIFIC WILLOW SERIES

RED ALDER SERIES

SITKA ALDER SERIES

SUBALPINE WETLAND SHRUB HABITAT

WATER BIRCH SERIES

WHITE ALDER SERIES

PALM OASIS

FAN PALM SERIES

PASTURE

NO CORRESPONDING TYPE IN THIS SERIES

PERENNIAL GRASSLAND

ASHY RYEGRASS SERIES

9

BIG GALLETA SERIES
BLUEBUNCH WHEATGRASS SERIES
CALIFORNIA OATGRASS SERIES
CREEPING RYEGRASS SERIES
CRESTED WHEATGRASS SERIES
DESERT NEEDLEGRASS SERIES
EUROPEAN BEACHGRASS SERIES
FOOTHILL NEEDLEGRASS SERIES
GREEN FESCUE SERIES
IDAHO FESCUE SERIES
INDIAN RICEGRASS SERIES
INTRODUCED PERENNIAL GRASSLAND SERIES
KENTUCKY BLUEGRASS SERIES
NATIVE DUNEGRASS SERIES
NEEDLE-AND-THREAD SERIES
NODDING NEEDLEGRASS SERIES
ONE-SIDED BLUEGRASS SERIES
PACIFIC REEDGRASS SERIES
PAMPAS GRASS SERIES
PURPLE NEEDLEGRASS SERIES
SHORTHAIR REEDGRASS SERIES
SHORTHAIR SEDGE SERIES
TUFTED HAIRGRASS SERIES

PINYON-JUNIPER

BIRCHLEAF MOUNTAIN-MAHOGANY SERIES
CURLLEAF MOUNTAIN-MAHOGANY SERIES
PARRY PINYON SERIES
SINGLELEAF PINYON SERIES
SINGLELEAF PINYON-UTAH JUNIPER SERIES
TWOLEAF PINYON STANDS

PONDEROSA PINE

JEFFREY PINE-PONDEROSA PINE SERIES
PONDEROSA PINE SERIES

RED FIR

RED FIR SERIES

REDWOOD

10

GRAND FIR SERIES
REDWOOD SERIES
SITKA SPRUCE SERIES
WESTERN HEMLOCK SERIES

RIVERINE

NO CORRESPONDING TYPE IN THIS SERIES

SAGEBRUSH

BIG SAGEBRUSH SERIES
BLACK BUSH SERIES
CURLLEAF MOUNTAIN-MAHOGANY SERIES
PARRY RABBITBRUSH SERIES
RUBBER RABBITBRUSH SERIES

SALINE EMERGENT WETLAND

BULRUSH SERIES
BULRUSH-CATTAIL SERIES
CATTAIL SERIES
COMMON REED SERIES
CORDGRASS SERIES
DITCH-GRASS SERIES
PICKLEWEED SERIES
SALTGRASS SERIES

SIERRAN MIXED CONIFER

BIGCONE DOUGLAS-FIR SERIES
COULTER PINE SERIES
COULTER PINE-CANYON LIVE OAK SERIES
DOUGLAS-FIR - PONDEROSA PINE SERIES
GIANT SEQUOIA SERIES
INCENSE-CEDAR SERIES
JEFFREY PINE-PONDEROSA PINE SERIES
LIMBER PINE SERIES
MIXED CONIFER SERIES
SAN BENITO MOUNTAIN STANDS
SANTA LUCIA FIR SERIES

SUBALPINE CONIFER

BRISTLECONE PINE SERIES
CURLLEAF MOUNTAIN-MAHOGANY SERIES

11

FOXTAIL PINE SERIES

LIMBER PINE SERIES

MIXED SUBALPINE FOREST SERIES

MOUNTAIN HEMLOCK SERIES

SUBALPINE FIR SERIES

WESTERN WHITE PINE SERIES

WHITEBARK PINE SERIES

URBAN

NO CORRESPONDING TYPE IN THIS SERIES

VALLEY FOOTHILL RIPARIAN

ARROYO WILLOW SERIES

BLACK COTTONWOOD SERIES

BLACK WILLOW SERIES

BUTTONBUSH SERIES

CALIFORNIA SYCAMORE SERIES

FREMONT COTTONWOOD SERIES

HINDS WALNUT STANDS

HOKER WILLOW SERIES

MEXICAN ELDERBERRY SERIES

MIXED WILLOW SERIES

MULEFAT SERIES

NARROWLEAF WILLOW SERIES

PACIFIC WILLOW SERIES

RED ALDER SERIES

RED WILLOW SERIES

SANDBAR WILLOW SERIES

SITKA WILLOW SERIES

TAMARISK SERIES

WHITE ALDER SERIES

VALLEY OAK WOODLAND

VALLEY OAK SERIES

VINEYARD

NO CORRESPONDING TYPE IN THIS SERIES

WET MEADOW

ALPINE HABITAT

BEAKED SEDGE SERIES

FOXTAIL PINE SERIES
LIMBER PINE SERIES
MIXED SUBALPINE FOREST SERIES
MOUNTAIN HEMLOCK SERIES
SUBALPINE FIR SERIES
WESTERN WHITE PINE SERIES
WHITEBARK PINE SERIES

URBAN

NO CORRESPONDING TYPE IN THIS SERIES

VALLEY FOOTHILL RIPARIAN

ARROYO WILLOW SERIES
BLACK COTTONWOOD SERIES
BLACK WILLOW SERIES
BUTTONBUSH SERIES
CALIFORNIA SYCAMORE SERIES
FREMONT COTTONWOOD SERIES
HINDS WALNUT STANDS
HOOKER WILLOW SERIES
MEXICAN ELDERBERRY SERIES
MIXED WILLOW SERIES
MULEFAT SERIES
NARROWLEAF WILLOW SERIES
PACIFIC WILLOW SERIES
RED ALDER SERIES
RED WILLOW SERIES
SANDBAR WILLOW SERIES
SITKA WILLOW SERIES
TAMARISK SERIES
WHITE ALDER SERIES

VALLEY OAK WOODLAND

VALLEY OAK SERIES

VINEYARD

NO CORRESPONDING TYPE IN THIS SERIES

WET MEADOW

ALPINE HABITAT
BEAKED SEDGE SERIES

BULRUSH SERIES

BULRUSH-CATTAIL SERIES

BUR-REED SERIES

CATTAIL SERIES

DARLINGTONIA SERIES

FEN HABITAT

KENTUCKY BLUEGRASS SERIES

MONTANE MEADOW HABITAT

NEBRASKA SEDGE SERIES

ONE-SIDED BLUEGRASS SERIES

ROCKY MOUNTAIN SEDGE SERIES

SEDEGE SERIES

SPIKERUSH SERIES

SUBALPINE MEADOW HABITAT

TUFTED HAIRGRASS SERIES

WHITE FIR

WHITE FIR SERIES

13

Welcome to California

[WHDAB Home](#)

[Programs](#)

[CNDDP](#)

[Plants](#)
[Animals](#)

[Veg. Classification](#)

[Natural Communities](#)

[BIOS](#)

[CalFish](#)

[Biodiversity Atlas](#)

[CWHR](#)

[Wildlife Habitats](#)

[Cal Wildlife Notes](#)

[RAP](#)

[GIS Applications](#)

[NCWAP](#)

[Data Products](#)

[By Product Type](#)

[By Program](#)

[Order Forms](#)

[Product Support](#)

[About Us](#)

[Staff](#)

[Info Sheet](#)

[Partners](#)



1807 13th Street, Suite 202

Sacramento, CA 95814

(916) 322-2493

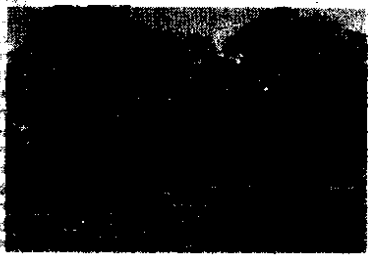
whdab@dfg.ca.gov

Wildlife and Habitat Data Analysis Branch

Wildlife Habitats — California Wildlife Habitat Relationships System

There are 59 wildlife habitats in the CWHR System – 27 tree, 12 shrub, 6 herbaceous, 4 aquatic, 8 agricultural, 1 developed, and 1 non-vegetated. The original 53 habitats – except the non-vegetated Barren habitat – are described in detail in the CWHR publication entitled:

A Guide to Wildlife Habitats of California, 1988.
 Edited by Kenneth E. Mayer and William F. Laudenslayer, Jr.
 State of California,
 Resources Agency,
 Department of Fish and Game,
 Sacramento, CA. 166 pp.
 Paper copies only.
[Link to order form.](#)



[Link to supplements to the 1988 guide:](#)

- [CWHR Wildlife Habitats Crosswalked with CNPS Vegetation Series \(1998\)](#)
- [UNESCO Formations Within CWHR Habitats \(1998\)](#)
- [CWHR Wildlife Habitats Crosswalked with CalVeg \(1998\) – updates the crosswalk to Parker and Maytas, 1981](#)
- [CWHR Agricultural Habitat Descriptions \(1999\) – describes the 8 agricultural habitats now in the CWHR models which collectively replace the original 2 – Cropland and Orchard/Vineyard.](#)
- [Description of Barren Habitat \(1999\)](#)
- [NEW! Revised Classification Rules \(2002\)](#)
- [NEW! Preliminary Revision to Marine and Estuarine Habitats of the California Wildlife Habitat Relationships System \(2002\)](#)

[Link to a list of habitats by county.](#)

HABITAT	DOMINANT SPECIES or DOMINANT ASSOCIATED SPECIES
Alkali Desert Scrub (ABC)	Saltbush, Sagebrush, Creosotebush
Alpine Dwarf-Shrub (ADG)	Creosotebush, Oceanspray, Greens/Goldenwood, Mountain White Heather
Annual Grassland (AGS)	Wild Oats, Soft Chess, Bromes
Aspen (ASP)	Willows, Alders, Black Cottonwood

Barren (BAR)	Rock, Pavement, Sand
Bitterbrush (BBS)	Big Sagebrush, Rabbitbrush, Mormon Tea
Blue Oak Woodland (BOW)	Live Oak, Valley Oak, Juniper
Blue Oak-Foothill Pine (BOP)	Interior Live Oak, Valley Oak, California Buckeye
Chamise-Redshank Chaparral (CRC)	Toyon, Ceanothus, Sugar Sumac
Closed Cone Pine-Cypress (CPC)	Tecate Cypress, Cuyamaca, Foothill Pine
Coastal Oak Woodland (COW)	White Oak, California Black Oak, Engelmann Oak
Coastal Scrub (CSC)	Lupine, Coyotebush, Sagebrush
Deciduous Orchard (DOR)	Almonds, Walnuts, Peaches
Desert Riparian (DRI)	Tamarisk, Velvet Ash, Mesquite
Desert Scrub (DSC)	Crescotebush, Catclaw Acacia, Desert Agave
Desert Succulent Shrub	Octillo, Mojave Yucca, Desert Agave
Desert Wash (DSW)	Paloverde, Desert Ironwood, Mesquite
Douglas Fir (DFR)	Live oak, Tanoak, Ponderosa Pine
Dryland Grain Crops (DGR)	Cereal Rye, Barley, Wheat
Eastside Pine (EPN)	Ponderosa Pine, Jeffrey Pine, White Fir
Estuarine (EST)	Plankton, Algae, Eel Grass
Eucalyptus (EUC)	Blue Gum, Red Gum
Evergreen Orchard (EOR)	Oranges, Avocados, Lemons
Fresh Emergent Wetland (FEW)	Big Leaf Sedge, Bulrush, Redroot Nutgrass
Irrigated Grain Crops (IGR)	Corn, Dry Beans, Safflower
Irrigated Hayfield (IRH)	Alfalfa, Hay
Irrigated Row and Field Crops (IRF)	Tomatoes, Cotton, Lettuce
Jeffrey Pine (JPN)	Ponderosa Pine, Coulter Pine, Sugar Pine
Joshua Tree (JST)	Juniper, Singleleaf Pinyon, Mojave Yucca
Juniper (JUN)	White Fir, Jeffrey Pine, Ponderosa Pine
Klamath Mixed Conifer (KMC)	White Fir, Douglas-Fir, Ponderosa Pine
Lacustrine (LAC)	Plankton, Duckweed, Water Willows
Lodgepole Pine (LPN)	Aspen, Mountain Hemlock, Red Fir
Low Sage (LSG)	Rabbitbrush, Bitterbrush, Winter Fat
Marine (MAR)	Plankton, Algae, Kelp
Mixed Chaparral (MCH)	Oaks, Ceanothus, Manzanita
Montane Chaparral (MCP)	Ceanothus, Manzanita, Bitter Cherry
Montane Hardwood (MHW)	Canyon Live Oak, Douglas Fir, Knobcone Pine
Montane Hardwood-Conifer (MHC)	Ponderosa Pine, Douglas Fir, Incense Cedar
Montane Riparian (MRI)	Black Cottonwood, White Alder, Bigleaf Maple
Palm Oasis (POS)	Coyote Willow, Velvet Ash, Sycamore
Pasture (PAS)	Bermuda Grass, Ryegrass, Tall Fescue
Perennial Grassland (PGS)	California Oatgrass, Hairgrass, Sweet Vernalgrass
Pinyon-Juniper (PJN)	Oaks, Mojave Yucca, Ponderosa Pine
Ponderosa Pine (PPN)	White Fir, Incense Cedar, Coulter Pine
Red Fir (RFR)	Noble Fir, White Fir, Lodgepole Pine
Redwood (RDW)	Sitka Spruce, Grand Fir, Douglas Fir
Rice (RIC)	Rice
Riverine (RIV)	Water Moss, Algae, Duckweed
Sagebrush (SGB)	Rabbitbrush, Sagebrush, Gooseberry
Saline Emergent Wetland (SEW)	Cordgrass, Pickleweed, Bulrush
Sierran Mixed Conifer (SMC)	White Fir, Douglas Fir, Ponderosa Pine
Subalpine Conifer (SCN)	Engelmann Spruce, Subalpine Fir, Mountain Hemlock

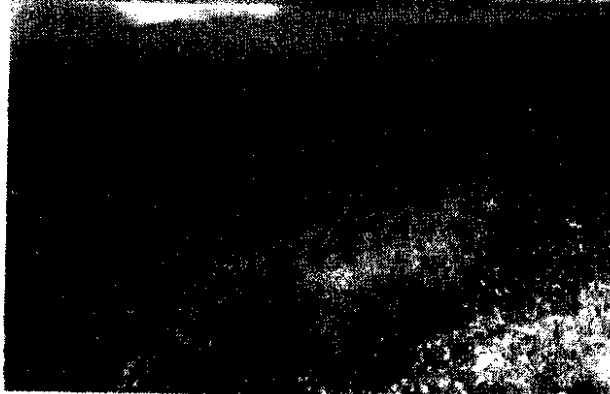
Urban (URB)	Grass Lawns, Trees, Hedges
Valley Foothill Riparian (VRI)	Cottonwood, Sycamore, Valley Oak
Valley Oak Woodland (VOW)	Sycamore, Black Walnut, Foothill Pine
Vineyard (VIN)	Grapes, Km1 Fruit, Boysenberries
Wet Meadow (WTM)	Thingrass, Sedge, Spikerush
White Fir (WFR)	Live Oak, Jeffrey Pine, Sugar Pine

[Back to Top of Page](#)

[Conditions of Use](#) [Privacy Policy](#)
(c) 2003 State of California.

Santa Monica Mountains Conservancy

La Tuna Canyon Park



Park Features

Directions & Rules

La Tuna Canyon Park was purchased by the Santa Monica Mountains Conservancy in 1985. The 1,100-acre park is located on the north slope of Verdugo Mountains. The main access to the park is via the 2.2 mile long La Tuna Canyon Trail that begins off of La Tuna Canyon Road and climbs up to the Verdugo Fire Road. Parking and picnic tables are provided at this trailhead and at "The Grotto" that is located less than one half mile further up La Tuna Canyon Road. The Grotto is a deeply incised canyon with steep walls and large overhanging trees that culminate in a waterfall with a small pool. It can be reached via a walk of several hundred meters along a crude trail from the parking along La Tuna Canyon Road.

Owned by: Santa Monica Mountains Conservancy
Operated by: Mountains Recreation & Conservation Authority(MRCA)

California - 295 listings

Animals - 116

Status	Listing
F	Albatross, short-tailed (<i>Phoebastria (=Diomedea) albatrus</i>)
T	Beetle, delta green ground (<i>Elaphrus viridis</i>)
T	Beetle, Mount Hermon June (<i>Polyphyla barbata</i>)
T	Beetle, valley elderberry longhorn (<i>Desmocerus californicus dimorphus</i>)
E	Butterfly, bay checkerspot (<i>Euphydryas editha bayensis</i>)
E	Butterfly, Behren's silverspot (<i>Speyeria zerene behrensis</i>)
E	Butterfly, callippe silverspot (<i>Speyeria callippe callippe</i>)
E	Butterfly, El Segundo blue (<i>Euphilotes battoides allyni</i>)
E	Butterfly, Lange's metalmark (<i>Apodemia mormo langei</i>)
E	Butterfly, lotis blue (<i>Lycaeides argyrognomon lotis</i>)
E	Butterfly, mission blue (<i>Icaricia icarioides missionensis</i>)
E	Butterfly, Myrtle's silverspot (<i>Speyeria zerene myrtisae</i>)
T	Butterfly, Oregon silverspot (<i>Speyeria zerene hippolyta</i>)
E	Butterfly, Palos Verdes blue (<i>Glaucopsyche lydamus palosverdesensis</i>)
E	Butterfly, Quino checkerspot (<i>Euphydryas editha quino (=E. e. wrighti)</i>)
E	Butterfly, San Bruno elfin (<i>Callophrys mossii bayensis</i>)
E	Butterfly, Smith's blue (<i>Euphilotes enoptes smithi</i>)
E	Chub, bonytail (<i>Gila elegans</i>)
E	Chub, Mohave tul (<i>Gila bicolor mohavensis</i>)
E	Chub, Owens tul (<i>Gila bicolor Snyderi</i>)
E	Condor, California (U.S.A. only) (<i>Gymnogyps californianus</i>)
E	Crayfish, Shasta (<i>Pacifastacus fortis</i>)
T	Eagle, bald (lower 48 States) (<i>Haliaeetus leucocephalus</i>)
E	Fairy shrimp, Conservancy (<i>Branchinecta conservatio</i>)
E	Fairy shrimp, longhorn (<i>Branchinecta longiantenna</i>)
E	Fairy shrimp, Riverside (<i>Streplocypris woottoni</i>)
E	Fairy shrimp, San Diego (<i>Branchinecta sandiegensis</i>)
T	Fairy shrimp, vernal pool (<i>Branchinecta lynchi</i>)
E	Fly, Delta Sands flower-loving (<i>Rhaphiomidas terminatus abdominalis</i>)
E	Flycatcher, southwestern willow (<i>Empidonax traillii eximius</i>)
E	Fox, San Joaquin kit (<i>Vulpes macrotis nutica</i>)
T	Frog, California red-legged (subspecies range clarified) (<i>Rana aurora draytoni</i>)
T	Frog, mountain yellow-legged (southern California DPS) (<i>Rana muscosa</i>)
E	Gnatcatcher, coastal California (<i>Polioptila californica californica</i>)
E	Goby, tidewater Entire (<i>Eucyclogobius newberryi</i>)
E	Grasshopper, Zayante band-winged (<i>Trimerotropis infantilis</i>)
E	Kangaroo rat, Fresno (<i>Dipodomys nitratoides exilis</i>)
E	Kangaroo rat, giant (<i>Dipodomys ingens</i>)

http://ecos.fws.gov/tess_public/TESSWebpageUsaLists?state=CA