

## **Appendix 4**

# **Staples Center Modification To Area Hydrology**

June 30, 1998

Mr. Alan Lee  
City of Los Angeles  
Department of Public Works  
Bureau of Engineering  
201 North Figueroa Street, Room 770  
Los Angeles, CA 90012

Subject: Staples Center Arena  
Master Agreement Paragraph 5.D.2 (page 14)

Gentlemen:

As required by the subject paragraph of the Master Agreement between the City of Los Angeles and the L.A. Arena Company, AC Martin Partners, as the Civil Engineers for the project, have reviewed the site areas tributary to the three downstream drainage areas for both the pre-development condition and the post-development condition. As a result of this review, we have determined that the construction of the project will result in insignificant changes to the storm runoff patterns downstream of the project. More specifically, and referring to the Pre-Development Drainage Map and the Post-Development Drainage Map accompanying this letter, which graphically indicate the areas tributary to each of the three downstream outlets, the runoff areas are compared as follows:

A. Area Tributary to 11<sup>th</sup> Street as Surface Flow

Pre-development there is no runoff from the site which runs westerly on 11<sup>th</sup> Street. However, due to the elimination of a catch basin at the intersection of Gilbert Lindsay Drive and 11<sup>th</sup> Street, runoff from site areas along 11<sup>th</sup> Street, and a portion of 11<sup>th</sup> Street will flow westerly along the south side of 11<sup>th</sup> Street until collected by a catch basin at Cherry Street. Since this drainage was (pre-development) tributary to the mainline storm drain in Gilbert Lindsay Drive, this will reduce the area tributary to that drain by more than 47,000 sf.

B. Area Tributary to 24-in. Convention Center Storm Drain at Northeast Corner of Parking Structure

Pre-development this storm drain accepts runoff from approximately 101,000 sf of site area and once the project is completed, runoff from only 43,000 sf will enter this system.

C. Area Tributary to Main Box Storm Drain in Gilbert Lindsay Drive

Pre-development this storm drain accepted runoff from approximately 292,100 sf of site area and when construction is completed, runoff from approximately 302,400 sf of site area will enter this system. The difference in area of 10,300 sf translates into an increase in the 195-cfs design flow for the system of less than 0.10 percent which is considered insignificant.

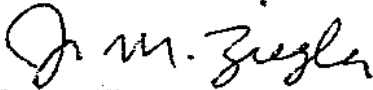
Mr. Alan Lee  
Staples Center Arena  
W.O. No. 97018  
June 30, 1998  
Page 2

We will appreciate your indicating your agreement with the conclusions presented herein by signing this letter where noted below and returning a signed copy to us. We will then forward a copy to the project architects, NBBJ Sports and Entertainment, who will transmit same to the Department of Building and Safety to demonstrate to them satisfaction of the subject condition to obtaining the Staples Arena Building Permit.

If you have any questions or need additional information regarding the above, please contact us. Thank you for your cooperation in this matter.

Very truly yours,

AC MARTIN PARTNERS



Jon M. Ziegler, Associate  
Director of Civil Engineering  
RCE 18,802

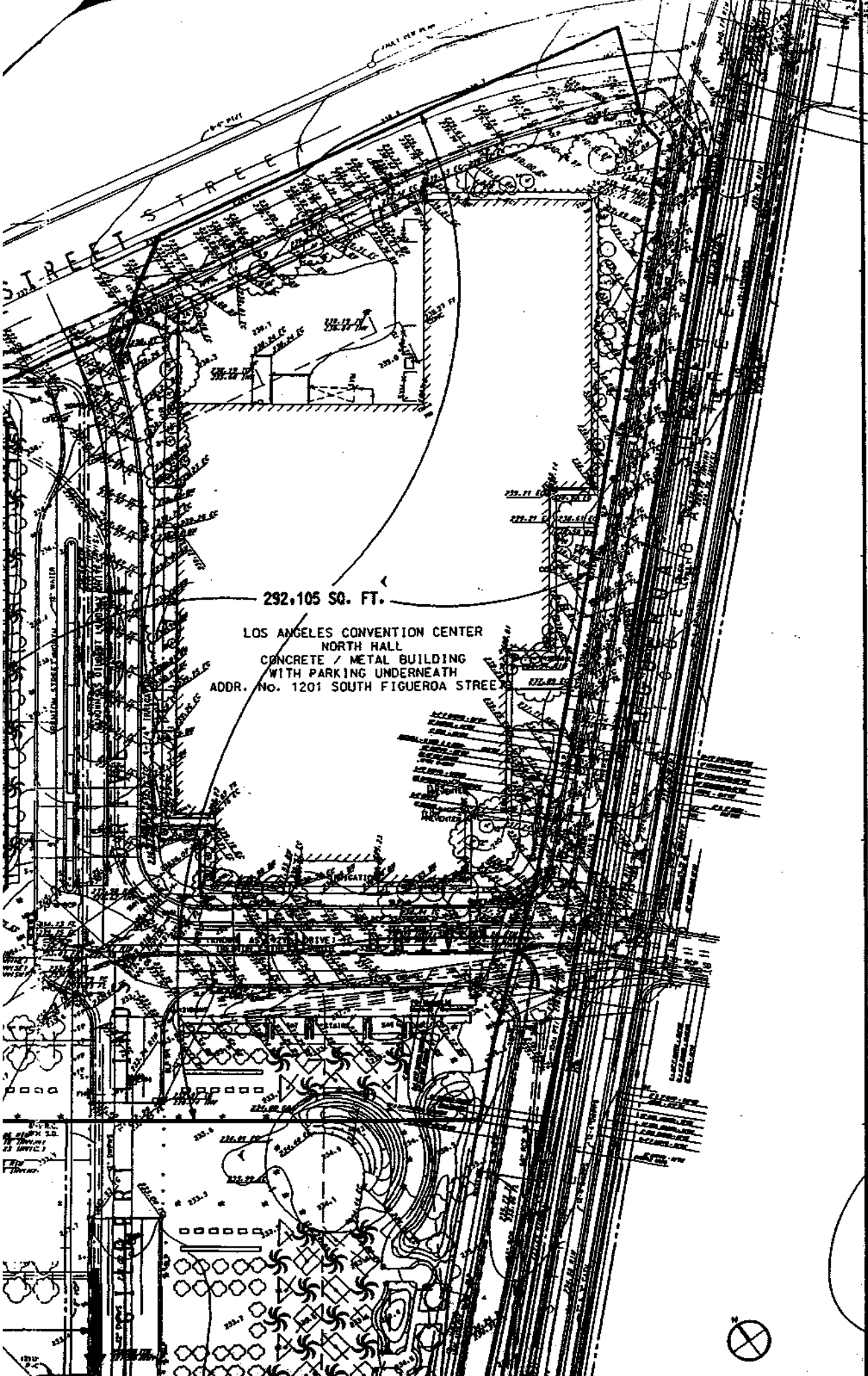
JMZ:vr

Encls. (2)

cc: NBBJ: Attn: James Matson  
LA Arena Co: Attn: Jim Linyard  
R. Braunschweiger

ACKNOWLEDGED BY: Alan Lee / Robert Vega  
City of Los Angeles  
Bureau of Engineering

Alan Lee                      7/16/98  
Signature                                      Date



292,105 SQ. FT.

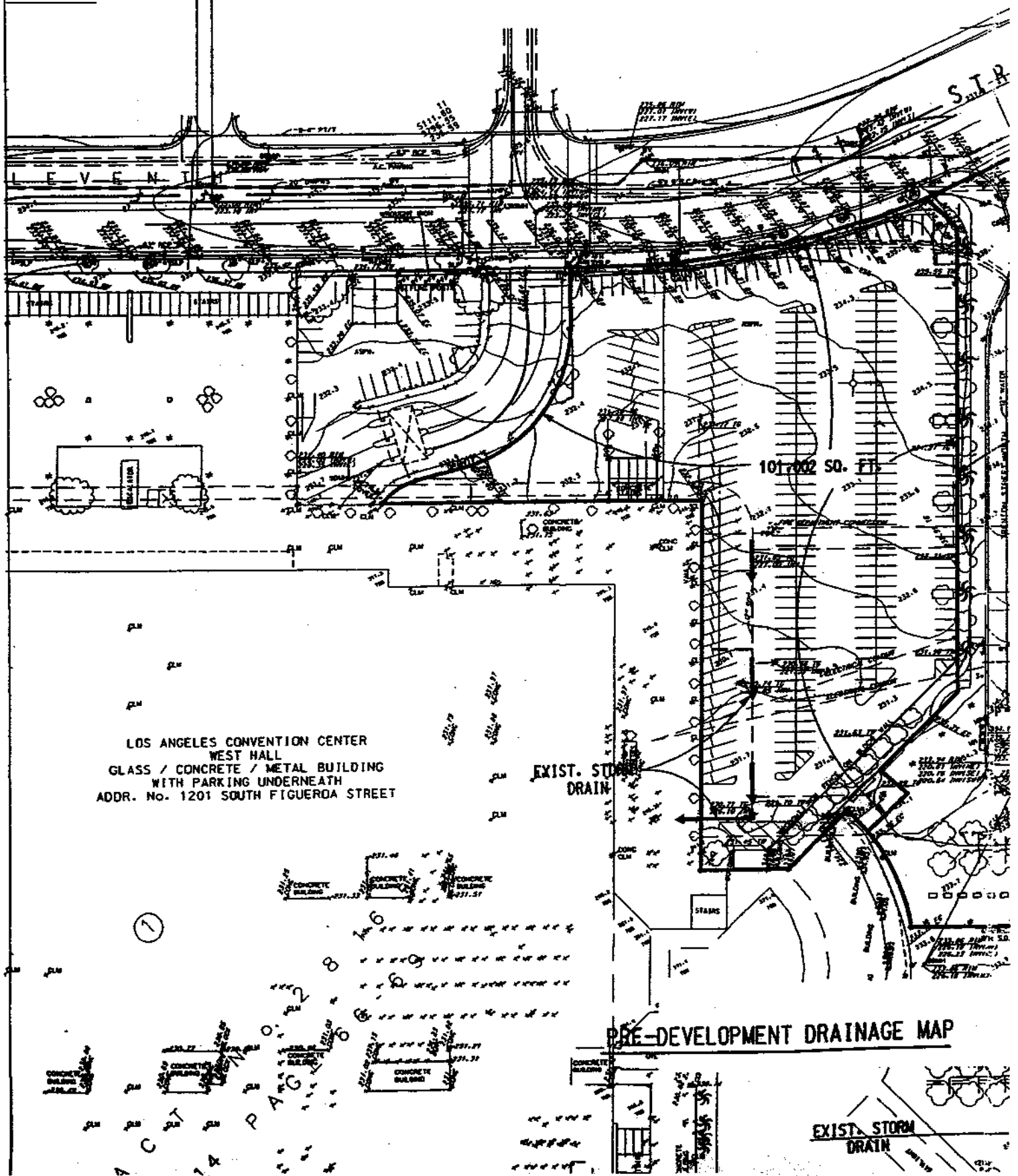
LOS ANGELES CONVENTION CENTER  
NORTH HALL  
CONCRETE / METAL BUILDING  
WITH PARKING UNDERNEATH  
ADDR. No. 1201 SOUTH FIGUEROA STREET

- 1. CONC. DRIVE
- 2. CONC. DRIVE
- 3. CONC. DRIVE
- 4. CONC. DRIVE
- 5. CONC. DRIVE
- 6. CONC. DRIVE
- 7. CONC. DRIVE
- 8. CONC. DRIVE
- 9. CONC. DRIVE
- 10. CONC. DRIVE
- 11. CONC. DRIVE
- 12. CONC. DRIVE
- 13. CONC. DRIVE
- 14. CONC. DRIVE
- 15. CONC. DRIVE
- 16. CONC. DRIVE
- 17. CONC. DRIVE
- 18. CONC. DRIVE
- 19. CONC. DRIVE
- 20. CONC. DRIVE
- 21. CONC. DRIVE
- 22. CONC. DRIVE
- 23. CONC. DRIVE
- 24. CONC. DRIVE
- 25. CONC. DRIVE
- 26. CONC. DRIVE
- 27. CONC. DRIVE
- 28. CONC. DRIVE
- 29. CONC. DRIVE
- 30. CONC. DRIVE
- 31. CONC. DRIVE
- 32. CONC. DRIVE
- 33. CONC. DRIVE
- 34. CONC. DRIVE
- 35. CONC. DRIVE
- 36. CONC. DRIVE
- 37. CONC. DRIVE
- 38. CONC. DRIVE
- 39. CONC. DRIVE
- 40. CONC. DRIVE
- 41. CONC. DRIVE
- 42. CONC. DRIVE
- 43. CONC. DRIVE
- 44. CONC. DRIVE
- 45. CONC. DRIVE
- 46. CONC. DRIVE
- 47. CONC. DRIVE
- 48. CONC. DRIVE
- 49. CONC. DRIVE
- 50. CONC. DRIVE
- 51. CONC. DRIVE
- 52. CONC. DRIVE
- 53. CONC. DRIVE
- 54. CONC. DRIVE
- 55. CONC. DRIVE
- 56. CONC. DRIVE
- 57. CONC. DRIVE
- 58. CONC. DRIVE
- 59. CONC. DRIVE
- 60. CONC. DRIVE
- 61. CONC. DRIVE
- 62. CONC. DRIVE
- 63. CONC. DRIVE
- 64. CONC. DRIVE
- 65. CONC. DRIVE
- 66. CONC. DRIVE
- 67. CONC. DRIVE
- 68. CONC. DRIVE
- 69. CONC. DRIVE
- 70. CONC. DRIVE
- 71. CONC. DRIVE
- 72. CONC. DRIVE
- 73. CONC. DRIVE
- 74. CONC. DRIVE
- 75. CONC. DRIVE
- 76. CONC. DRIVE
- 77. CONC. DRIVE
- 78. CONC. DRIVE
- 79. CONC. DRIVE
- 80. CONC. DRIVE
- 81. CONC. DRIVE
- 82. CONC. DRIVE
- 83. CONC. DRIVE
- 84. CONC. DRIVE
- 85. CONC. DRIVE
- 86. CONC. DRIVE
- 87. CONC. DRIVE
- 88. CONC. DRIVE
- 89. CONC. DRIVE
- 90. CONC. DRIVE
- 91. CONC. DRIVE
- 92. CONC. DRIVE
- 93. CONC. DRIVE
- 94. CONC. DRIVE
- 95. CONC. DRIVE
- 96. CONC. DRIVE
- 97. CONC. DRIVE
- 98. CONC. DRIVE
- 99. CONC. DRIVE
- 100. CONC. DRIVE

LOU MARTIN PARTNERS

STAPLES CENTER ARENA  
PRE-DEVELOPMENT  
DRAINAGE MAP

NO.	DATE	DESCRIPTION
1		
2		
3		
4		
5		
6		
7		
8		
9		
10		
11		
12		
13		
14		
15		
16		
17		
18		
19		
20		
21		
22		
23		
24		
25		
26		
27		
28		
29		
30		
31		
32		
33		
34		
35		
36		
37		
38		
39		
40		
41		
42		
43		
44		
45		
46		
47		
48		
49		
50		
51		
52		
53		
54		
55		
56		
57		
58		
59		
60		
61		
62		
63		
64		
65		
66		
67		
68		
69		
70		
71		
72		
73		
74		
75		
76		
77		
78		
79		
80		
81		
82		
83		
84		
85		
86		
87		
88		
89		
90		
91		
92		
93		
94		
95		
96		
97		
98		
99		
100		



LOS ANGELES CONVENTION CENTER  
 WEST HALL  
 GLASS / CONCRETE / METAL BUILDING  
 WITH PARKING UNDERNEATH  
 ADDR. No. 1201 SOUTH FIGUEROA STREET

101,700 SQ. FT.

EXIST. STORM DRAIN

PRE-DEVELOPMENT DRAINAGE MAP

EXIST. STORM DRAIN

S.I.R.

LEVENTI

①

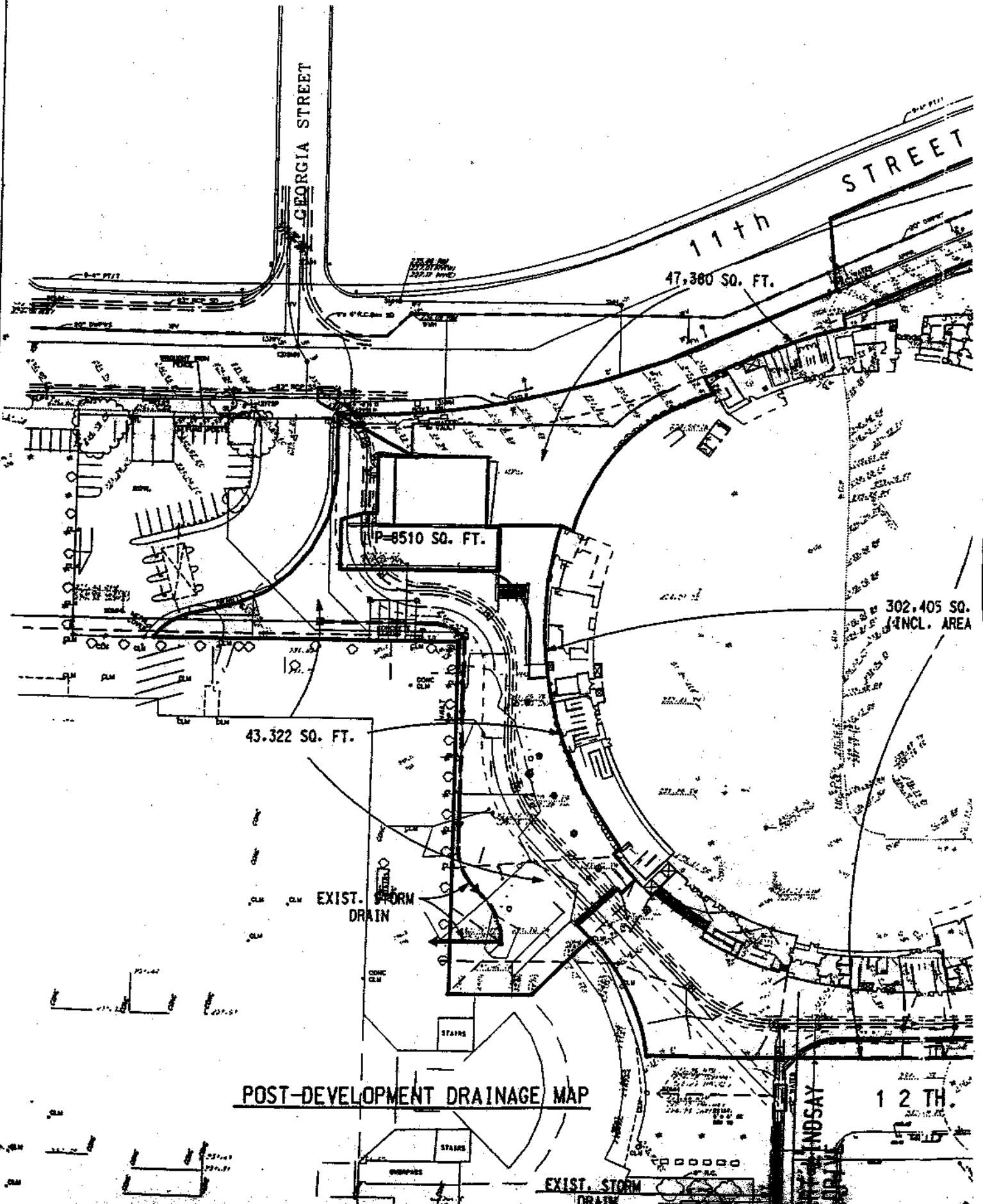
CONCRETE BUILDING  
 CONCRETE BUILDING  
 CONCRETE BUILDING

CONCRETE BUILDING  
 CONCRETE BUILDING

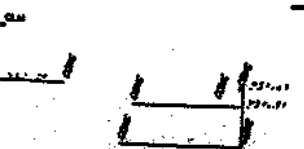
STAMS







**POST-DEVELOPMENT DRAINAGE MAP**



EXIST. STORM DRAIN

INDSAY

12 TH.