

APPENDIX A

APPENDIX A-1 NOTICE OF PREPARATION (NOP)

CITY OF LOS ANGELES
CALIFORNIA



ANTONIO R. VILLARAIGOSA
MAYOR

DEPARTMENT OF
CITY PLANNING
200 N. SPRING STREET, ROOM 525
LOS ANGELES, CA 90012-4801
AND
6262 VAN NUYS BLVD., SUITE 351
VAN NUYS, CA 91401
CITY PLANNING COMMISSION
JANE ELLISON USHER
PRESIDENT
WILLIAM ROSCHEN
VICE-PRESIDENT
DIEGO CARDOSO
REGINA M. FREER
ROBIN R. HUGHES
FR. SPENCER T. KEZIOS
CINDY MONTAÑEZ
MICHAEL K. WOO
GABRIELE WILLIAMS
COMMISSION EXECUTIVE ASSISTANT
(213) 978-1300

EXECUTIVE OFFICES
S. GAIL GOLDBERG, AICP
DIRECTOR
(213) 978-1271
JOHN M. DUGAN, AICP
DEPUTY DIRECTOR
(213) 978-1274
EVA YUAN-MCDANIEL
DEPUTY DIRECTOR
(213) 978-1273
FAX: (213) 978-1275
INFORMATION
(213) 978-1270
www.planning.lacity.org

April 17, 2008

NOTICE OF PREPARATION

EAF NO.: ENV-2001-1196-EIR

PROJECT NAME: Studio City Senior Living Center

PROJECT ADDRESS: 4141 Whitsett Avenue

COMMUNITY PLAN AREA: Sherman Oaks-Studio City-Toluca Lake-Cahuenga Pass

COUNCIL DISTRICT: 2

COMMENT DUE DATE: Monday, May 19, 2008

The City of Los Angeles, Department of City Planning, as the Lead Agency, will require the preparation of an Environmental Impact Report (EIR) for the project identified herein. An EIR was required for the previously proposed project in November 2003; however, the EIR was postponed due to the reconfiguration of project site boundaries to accommodate construction of City of Los Angeles Fire Station No. 78. The fire station occupies a 1.1-acre portion of the southeast corner of the site and is not under ownership of the applicant. The project plans have since been revised to account for the boundary alterations. Notices of Preparations (NOP) were subsequently issued on January 4, 2007 and April 5, 2007 respectively, and two scoping meetings for a revised project were held on January 18, 2007 and March 20, 2007 respectively. The project has since been revised again (see below) and will once again require an EIR. The Department of City Planning requests your comments as to the scope and content of the EIR. A comprehensive project description and potential environmental effects are included below.

Project Description

The applicant proposes to subdivide the subject property into two lots, Parcels A and B. Parcel A will be approximately 508,244 square feet (11.67 acres) and will retain, with minor alterations to accommodate the lot split, the existing nine-hole golf course, driving range, and 22 surface parking spaces. The 1.1 acre site at the northwesterly corner of Whitsett Avenue and Valleyheart Drive, developed with a fire station, is not a part of the subject project. Parcel B will be approximately 193,466 square feet (4.44 acres) and will be developed with an approximately 336,000 square-foot, 200-unit senior residential condominium campus. The development will be comprised of five rectangular and one polygonal-shaped, four-story buildings, reaching a



maximum height of 45 feet. Each building will consist of between 30 and 40 residential units. Five of the buildings will be situated such that their longer faces orient northerly and southerly; the sixth building will be situated with its longer faces oriented easterly, along Whitsett Avenue, and westerly. Interior common areas will be provided on the entire ground floor of two buildings and on approximately one-third of the ground floor of two other buildings, providing approximately 40,000 square feet of common use area. The buildings will surround, and be separated by, a combination of approximately 109,176 square feet of landscape and hardscape.

Parking for the project will be provided at a ratio of 2.5 spaces per dwelling unit, for a total of 500 spaces for residents and their guests, and 135 spaces to serve the existing golf course and driving range, for a total of 635 spaces overall. The spaces will be available as a combination of the existing 22 surface parking stalls within Parcel A and two new levels of 613 subterranean parking spaces within Parcel B. Parking level P1 will contain 370 spaces for the exclusive use by residents and their guests. Residents and their guests will also have access to 130 of the 243 spaces on parking level P2. The remaining 113 spaces on parking level P2 plus the existing 22 surface parking spaces will provide the 135 parking spaces to be designated and reserved for the golf course and driving range.

Residents will own their dwelling unit and an undivided interest in the residential common areas. A homeowners' association will be established with a limited administrative function related to the residential common areas.

The applicant will retain ownership and operate the common areas and outdoor facilities. The common areas will include a large dining room and multipurpose room for guest speakers and community events for residents, an arts and crafts room, library, computer room, exercise room, mail room, and administrative offices.

The campus will function as a Senior Living Center, providing a Services Program in which residents are obligated by contract to participate by paying an applicable monthly fee.

Services will include:

- Maintenance of the entire campus, including individually owned units
- Weekly housekeeping of individual units
- 24- hour security
- Concierge services
- Dining room with sit-down service
- Arts and crafts
- Exercise facilities
- Onsite programs and outings
- Planned community events for residents
- Neighborhood van service
- Wellness clinic

The applicant will retain responsibility for the following:

- Campus management
- Operation of the common areas
- Provision of all services offered under the Services Program
- Maintenance of the entire campus, including units owned by residents, as well as residential common areas, and grounds
- Management of the resale of units when the resident leaves (although the resident benefits from price appreciation)

ENVIRONMENTAL FACTORS POTENTIALLY AFFECTED: Aesthetics, Air Quality, Cultural Resources, Geology and Soils, Hydrology/Water Quality, Land Use and Planning, Noise, Population and Housing, Public Services, Recreation, Transportation/Traffic, and Utilities/Energy Conservation.

The enclosed materials reflect the scope of the proposed project, which is located in an area of interest to you and/or the organization you represent. The Environmental Review Section of the Department of City Planning welcomes all comments regarding potential environmental impacts of the proposed project. All comments will be considered in the preparation of the EIR. **Written comments** must be submitted to this office by **May 19, 2008**.

Please direct your responses to:

David Somers, Project Coordinator
Environmental Review Section
Department of City Planning
200 N. Spring Street, Room 750
Los Angeles, CA 90012
(213) 978-1343 (fax)
David.Somers@lacity.org (email)

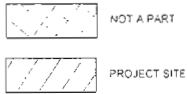
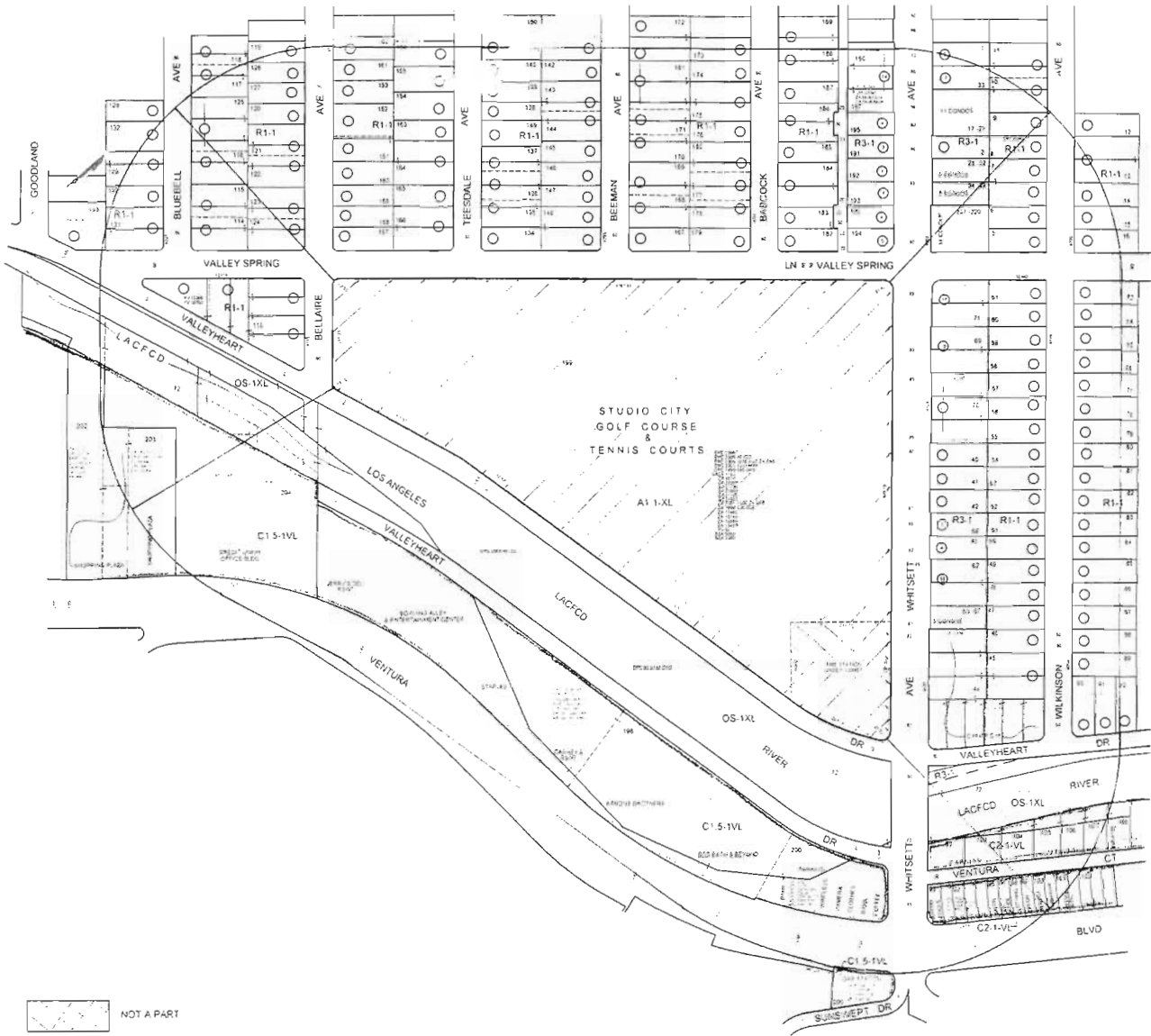
Gail Goldberg, AICP
Director of Planning



David Somers

Planning Assistant, EIR Unit
Environmental Review Section

Enclosures



C D 2
 C T 1425
 P A SHERMAN OAKS - STUDIO CITY -
 TOLUCA LAKE - CAHUENGA PASS

LEGAL LOT 1, TRACT NO - 19437 (M.B. 597-91-92)

GC MAPPING SERVICE INC.

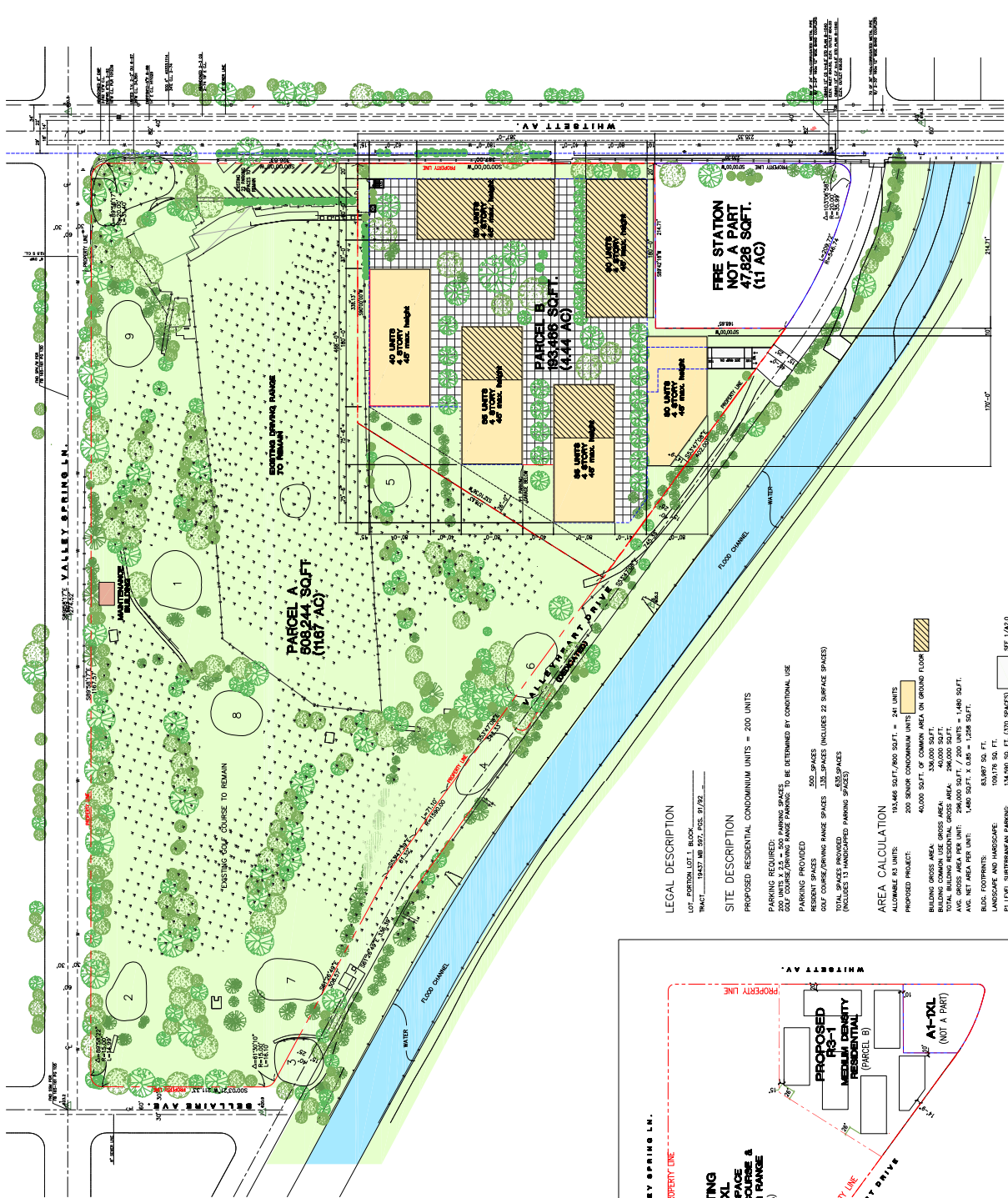
3055 WEST VALLEY BLVD.
 ALHAMBRA CA 91803
 (626)441-1080 FAX (626)441-8850
 gomapping@redburnmaps.com

NOTICE OF PREPARATION

CASE NO.
 DATE 04-08-2008
 SCALE 1" = 100'
 USES FIELD
 D.M. 1059105, 1059161
 1628185, 1628187
 T.B. PAGE 502 GRID EF-5

17.20 NET AC

REVISION	DATE

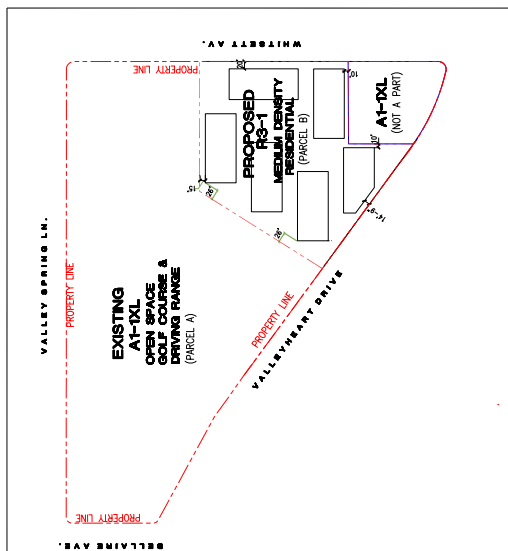


LEGAL DESCRIPTION
 LOT 1, PORTION LOT 1, BLOCK 1, TRACT 19432, MER. SEC. 507, PDS. 517/52

SITE DESCRIPTION
 PROPOSED RESIDENTIAL CONDOMINIUM UNITS = 200 UNITS
 200 UNITS x 2.5 = 500 PARKING SPACES
 GOLF COURSE/DRIVING RANGE PARKING: TO BE DETERMINED BY CONDITIONAL USE
 PARKING PROVIDED: 500 SPACES
 GOLF COURSE/DRIVING RANGE SPACES: 135 SPACES (INCLUDES 22 SURFACE SPACES)
 TOTAL SPACES PROVIDED: 635 SPACES (INCLUDES 13 UNADJACENT PARKING SPACES)

AREA CALCULATION
 ALLOWABLE RS UNITS: 193,466 SQFT/600 SQFT = 241 UNITS
 PROPOSED PROJECT: 200 SENIOR CONDOMINIUM UNITS
 40,000 SQFT OF COMMON AREA ON GROUND FLOOR
 BUILDING GROSS AREA: 140,000 SQFT
 TOTAL BUILDING RESIDENTIAL GROSS AREA: 280,000 SQFT
 LANDSCAPE AND HARDSCAPE: 1,488 SQFT
 AVE. NET AREA PER UNIT: 1,400 SQFT x 2.00 = 1,200 SQFT
 BLDG. FOOTPRINTS: 63,987 SQ. FT.
 LANDSCAPE AND HARDSCAPE: 109,176 SQ. FT. (370 SPACES) SEE 1/A2.0
 P1 LEVEL SUBTERRANEAN PARKING: 134,890 SQ. FT. (230 SPACES)
 P2 LEVEL SUBTERRANEAN PARKING: 88,920 SQ. FT. (243 SPACES) SEE 2/A2.0

1 SITE PLAN
 SCALE: 1" = 50'



2 KEY SITE PLAN
 SCALE: 1" = 100'



©1994 Thomas Bros. Maps

VICINITY MAP

SITE: 4047-4155 WHITSETT AVENUE

**PLANNING ASSOCIATES, INC.
 4040 VINELAND AVENUE #108
 STUDIO CITY CA 91604
 (818) 487-6767**