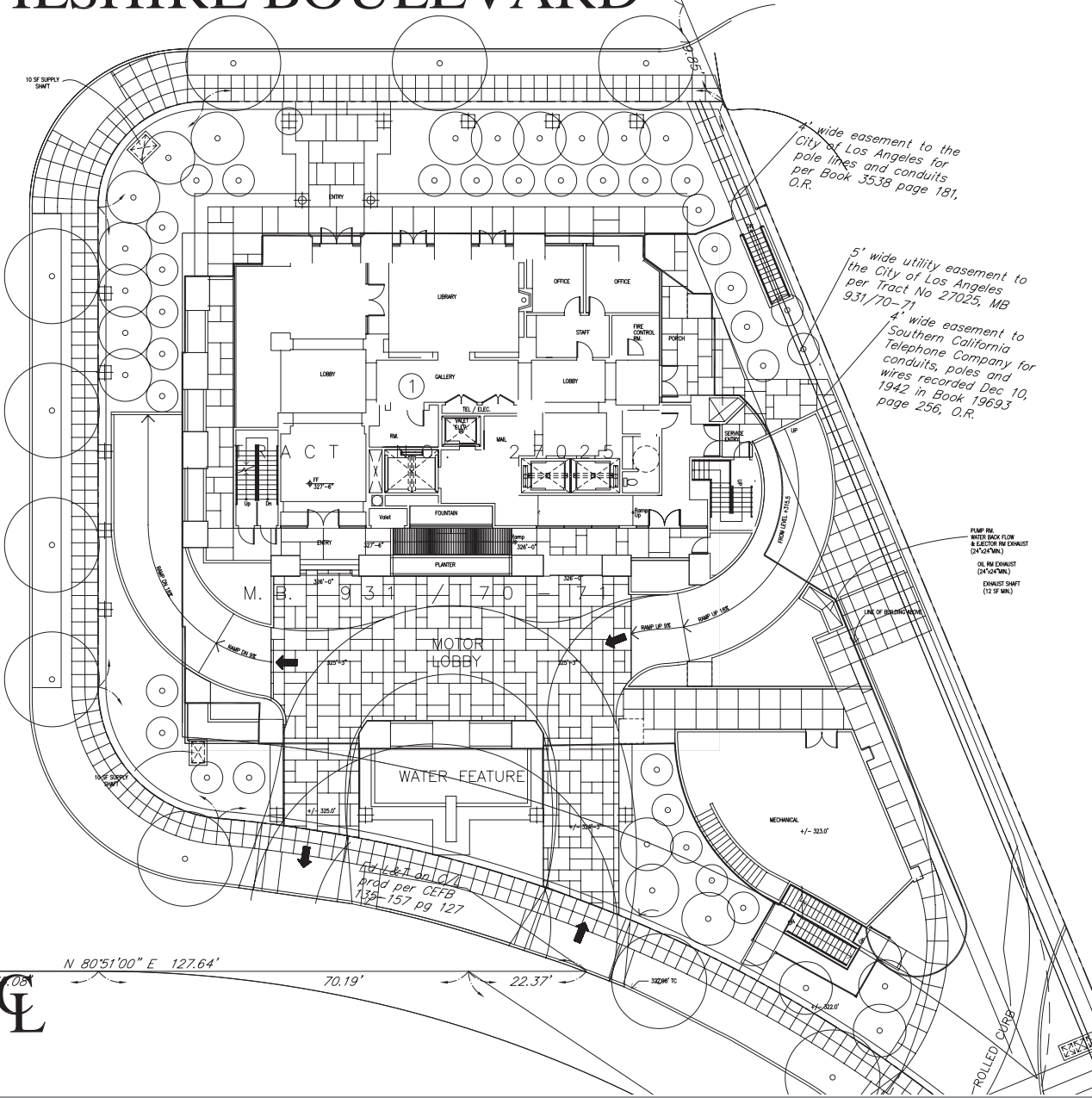


WILSHIRE BOULEVARD

COMSTOCK AVENUE

N 09°09'30" W 227.55'
 0+00
 0+50
 1+00
 1+50



4' wide easement to the City of Los Angeles for pole lines and conduits per Book 3538 page 181, O.R.

5' wide utility easement to the City of Los Angeles per Tract No 27025, MB 931/70-71

4' wide easement to Southern California Telephone Company for conduits, poles and wires recorded Dec 10, 1942 in Book 19693 page 256, O.R.

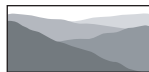
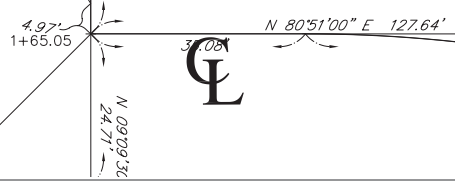
PUMP RM.
 WATER BACK FLOW & ELECTOR RM EXHAUST (24"x24" MIN.)
 1/2" DIA EXHAUST (24"x24" MIN.)
 EXHAUST SHAFT (12" DIA)

STEAM PRESSURIZATION (24"x24" MIN.)
 SWITCH GEAR
 PUMP RM.
 WATER BACK FLOW & ELECTOR RM SUPPLY (24"x24" MIN.)

Fd S&T per CEFB 135-157 pg 126

Fd S&T per CEFB 135-157 pg 126

Fd S&T on O.R. Arad per CEFB 135-157 pg 127



CHRISTOPHER A. JOSEPH & ASSOCIATES
 Environmental Planning and Research

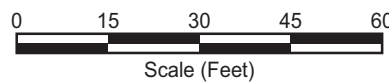


Figure III-1
 Proposed Site Plan: 1st Floor